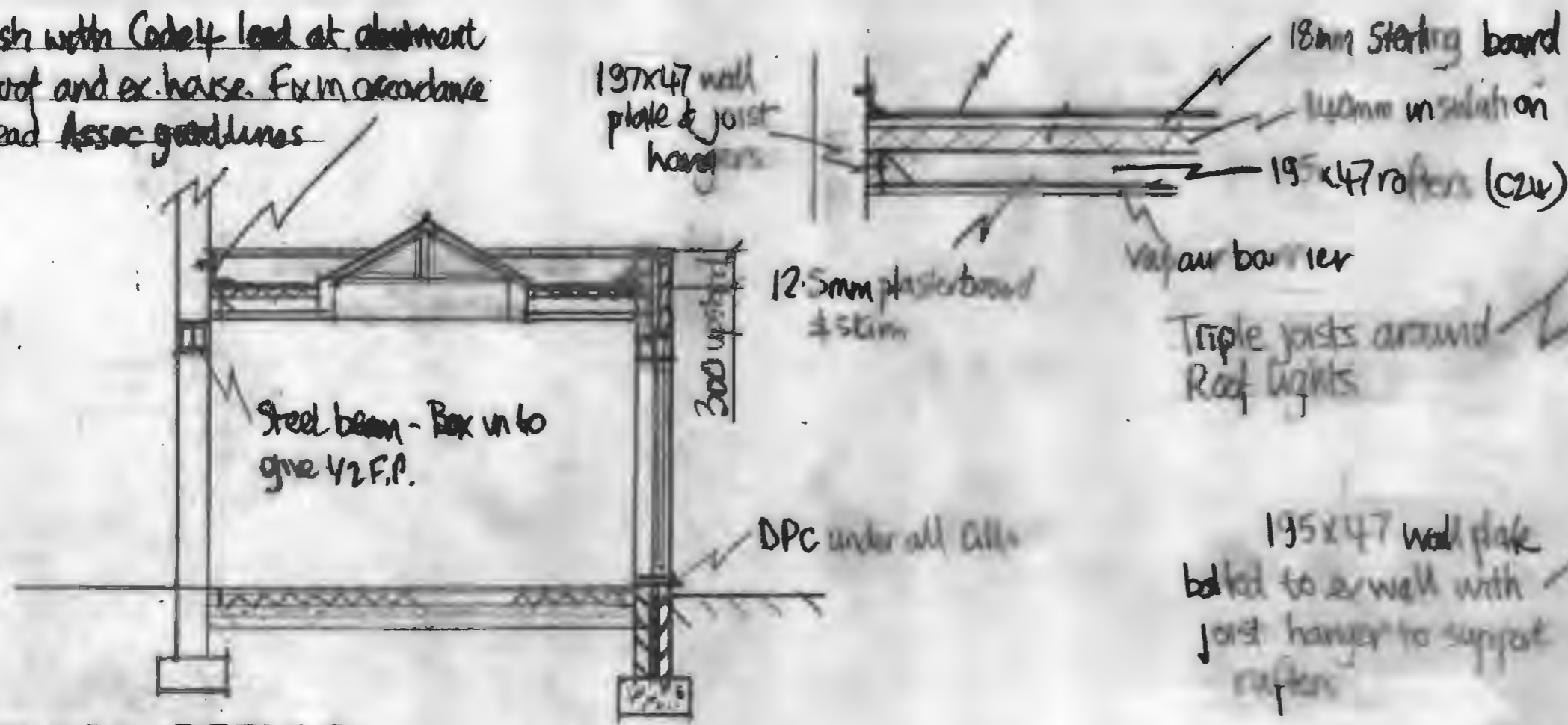
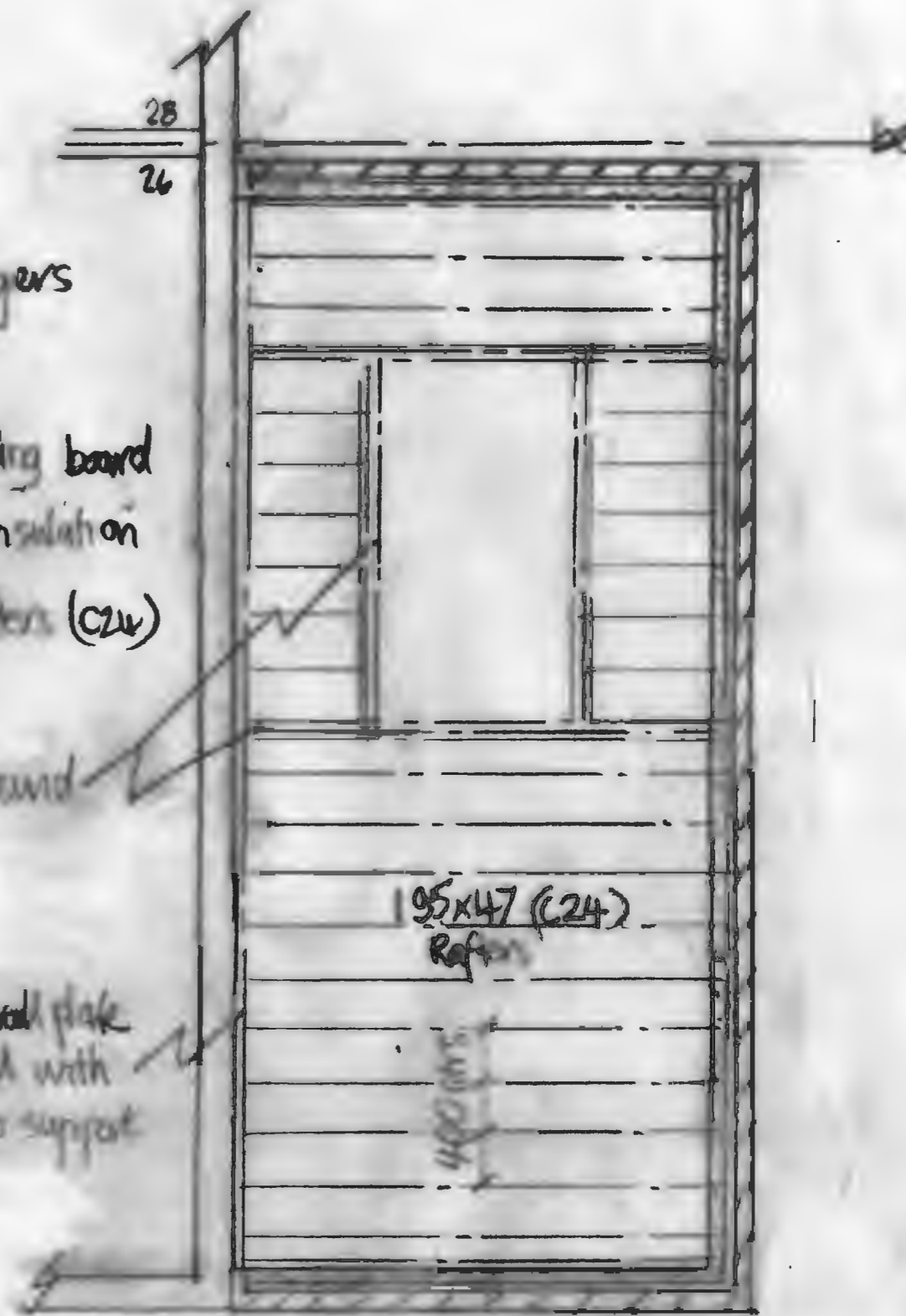


Roof construction - Warm deck design - Fix a fibreglass waterproof membrane on 8mm staggered Sterling board on 140mm thick bonded insulation deck on 95x47mm (C24) joists set at 400cns. Fix a vapour barrier to inner face of joists with 12.5mm plasterboard to inner ceiling and skim. Roof secured with heavy duty galvanised Bat-steps (30x5x1200) fixed to inner leaf every 3 joists. Joist built into new external wall and on a 195x47 wall plate bolted to ex. wall with galvanised joist hangers. Bat-steps fixed to each side of any windows or doors.

Lead flash with Cadef lead at abutment new roof and ex. house. Fix in accordance with Lead Assoc guidelines



FLOOR DETAILS



ROOF DETAILS



New Concrete floor - 75mm lightly reinforced sand/cement screed on a 1200g vapour membrane on Kingspan or similar 140mm thick insulation board with 30mm insulation around perimeter upstand - 100mm concrete slab on 50mm sand bonded consolidated hardcore (150mm). Fit Radon membrane sleeve to all service entries lapped into membrane - Vent out any existing floor ventilation to new external walls.

Proposed Extension to 26 Newton Road,
Bromsgrove Scale 1:50