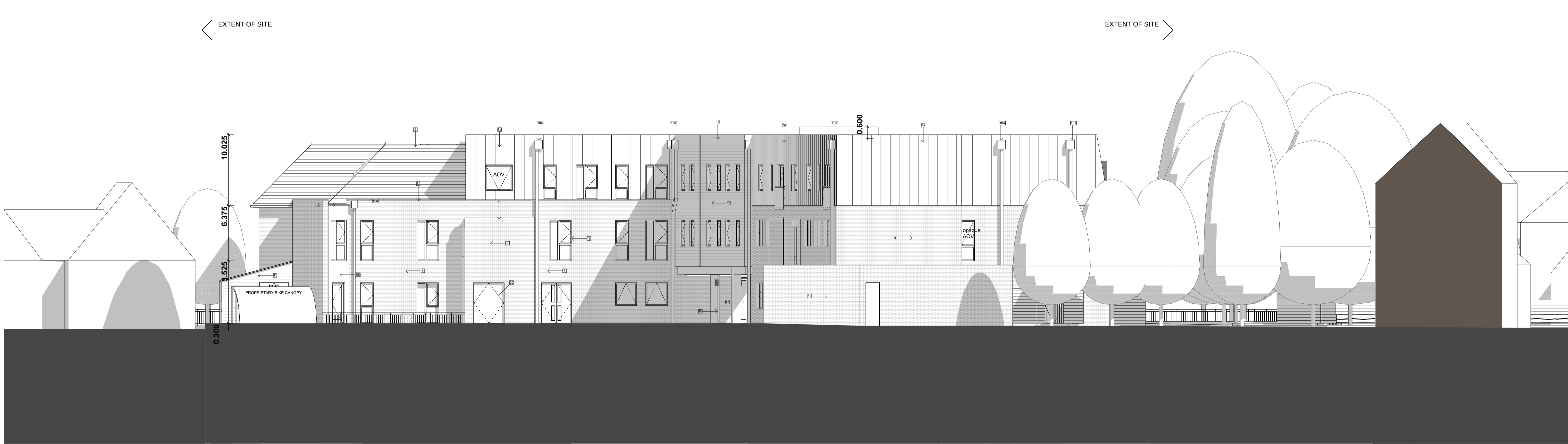


MATERIAL SCHEDULE

- 1 Toughened glass Juliette balcony with Pearl Gold polyester powder coated steel frame RAL 1036
- 2 Facing brick to be Ibstock Hardwicke Minster Cream Blend 2419 (vertical stack bond)
- 3 Facing brick to be Ibstock Hardwicke Minster Cream Blend 2419 (stretcher bond)
- 4 Polyester powder coated aluminium window surround and cover flashing in Pearl Gold colour RAL 1036
- 5 Anthracite grey polyester powder coated dormer window surround and cover flashing RAL 7016
- 6 Slate grey polyester powder coated window blanking cover flashing RAL 7015
- 7 Anthracite coloured single ply membrane mansard roof + standing seam detail applied (7a = variation is vertical)
- 8 Slate grey polyester powder coated aluminium patent glazing with double doors to patio terrace (RAL 7015)
- 9 Fibre cement slate blue / black roof tile
- 10 Black polyester powder coated aluminium guttering and rainwater goods
- 10a Black UPVC guttering and rainwater goods
- 10b Light grey rendered wall to match RAL 7037
- 11 Light grey polyester powder coated aluminium flat roof stepped edge detail flashing RAL 7037
- 12 Anthracite grey RAL 7016 UPVC window frames
- 13 Fibre cement stone coloured rainscreen cladding
- 14 Polyester powder coated flashing to match cladding
- 15 Shiplap timber cladding to bin store enclosure
- 16 GGL SD5N2 CK04 Velux Conservation rooflight
- 17 Toughened glass entrance doors with safety manifestation
- 18 Stiffened column encasement (colour to be confirmed)
- 19 Facing brick to be Ibstock Hardwicke Minster Cream Blend 2419 (stretcher bond)
- 20 Composite double doors to match window frames



AS PROPOSED COURTYARD ELEVATION 1

Rev.	Date	Description	Drawn
H	09.12.20	PLANNING ISSUE non material amendment	TR
G	05.11.20	PLANNING ISSUE discharge of conditions	TR
F	16.10.20	Facing brick specified on material schedule	TR
E	13.10.20	Grey RAL colours clarified on material schedule	TR
D	02.10.20	Window frames (UPVC) same colour	TR
C	29.11.19	TENDER ISSUE	TR
B	19.08.19	PLANNING ISSUE	TR
A	06.08.19	Minor amendments	TR

Note:
Do not scale off this drawing. Do not rely on this drawing for purposes other than the recorded 'Status'. Constructors must be familiar with the client's building asbestos register ahead of facilitating any work contained on this drawing. This drawing is copyright of HLP Architects & Designers & must not be reproduced unless specifically agreed in writing.

North Scale

Office		Drawing Title	
Nottingham		Courtyard elevation 1	
Address		Project	
53 Forest Road East		Lendrum Court, Burton Joyce	
Post Code		Client	
NG1 4HW		Gedling Homes	
Tel		Scales @ A1	
0115 989 7969		Date	
Website		07.08.19	
www.hlpdesign.com		Job Number	
		121_H_	
		Revision	
		1	
		Status	
		TR MJ	
		Comments	
		COMMENTS ONLY	

