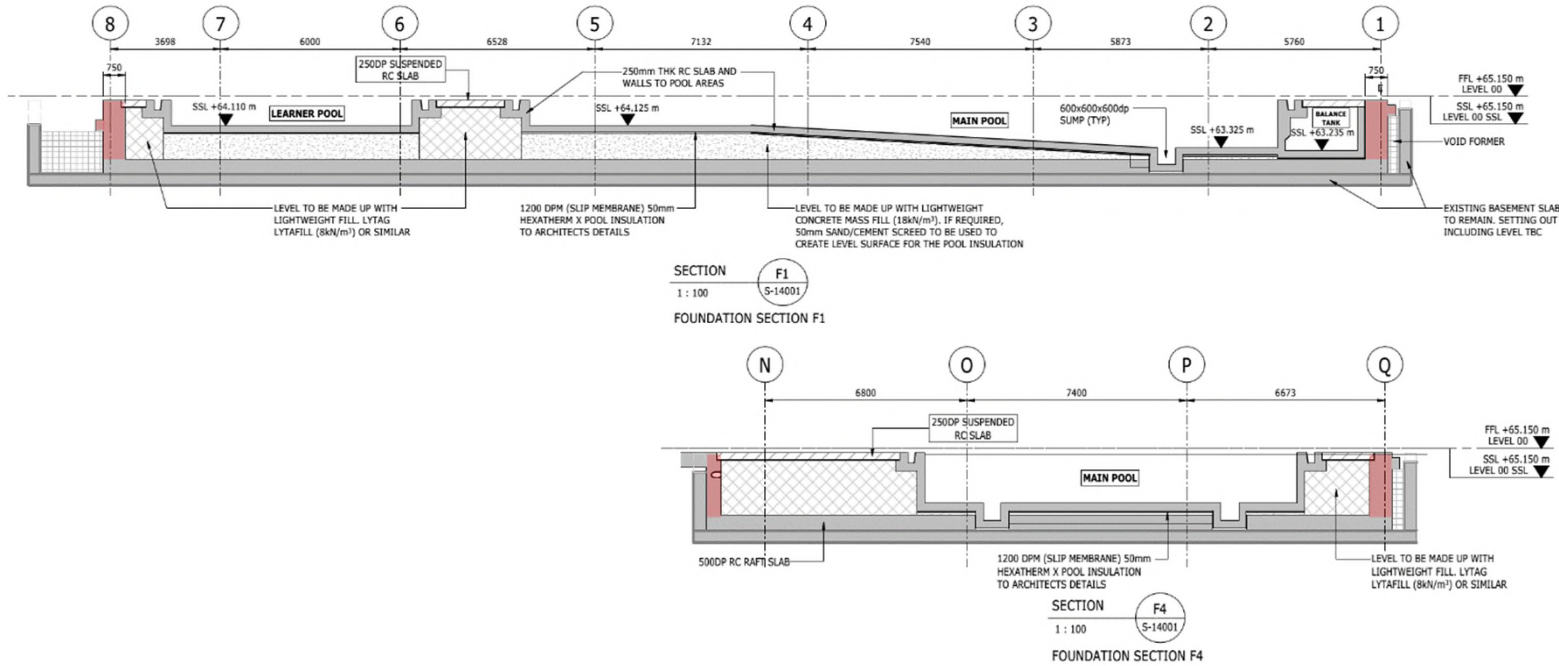
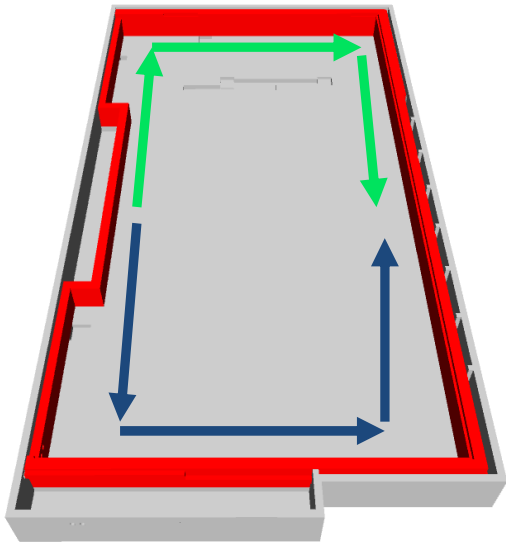


Substructure

Lower Raft Slab - Walls

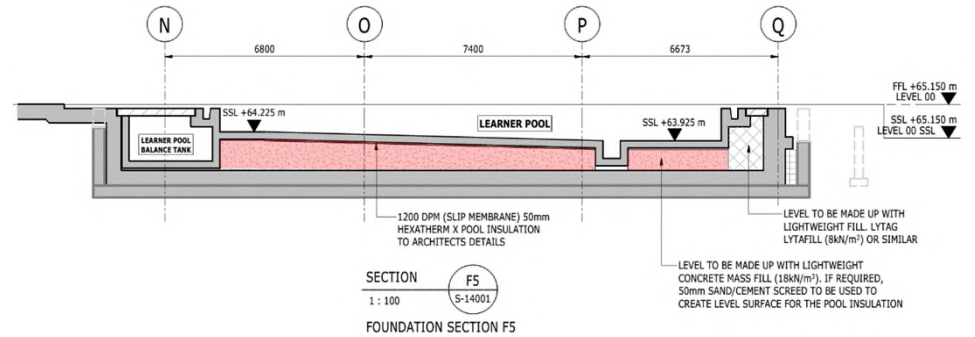
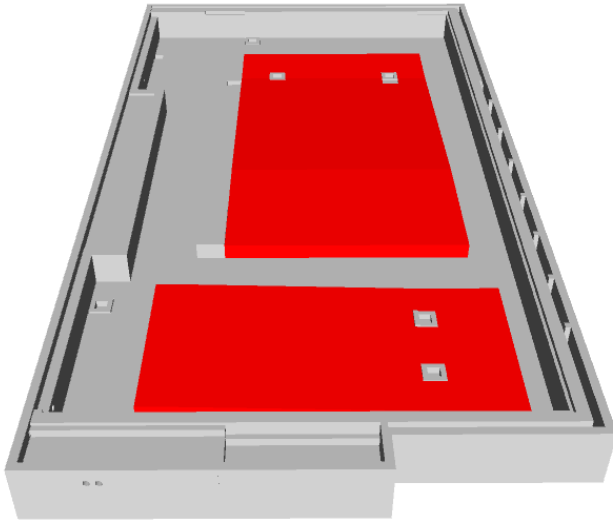
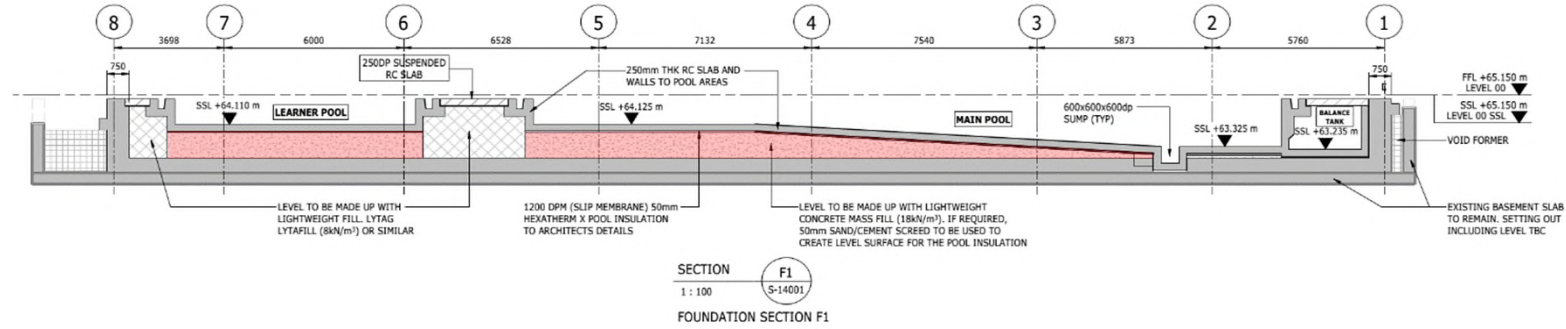
Split into 30 pours – 2gngs



☐ Raft Walls	7w 4d	5	
☐ Gang 1	7w 4d	6	
☐ Pour 1	4d	7	
Void former	1d	8	
Reinforcement	8eh	9	
Formwork	8eh	10	
Concrete	8eh	11	
Strike Formwork	1d	12	

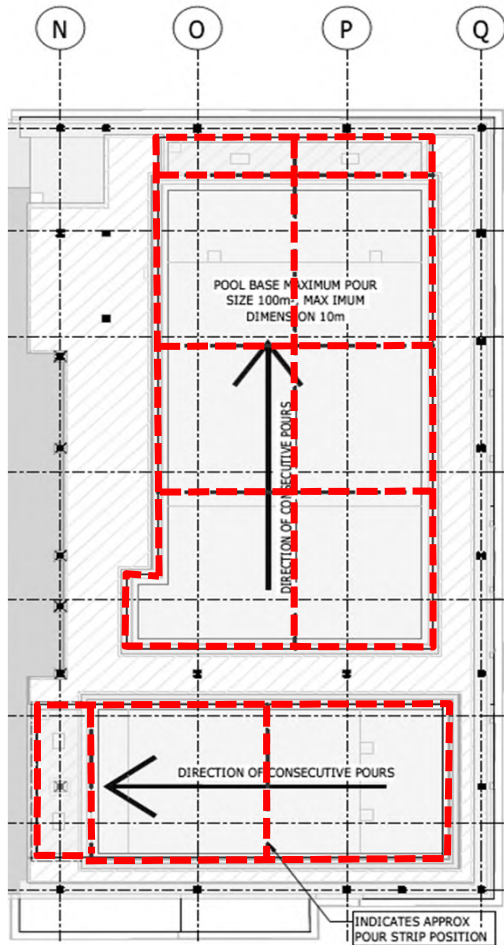
Substructure

Lower Raft Slab – Mass Fill

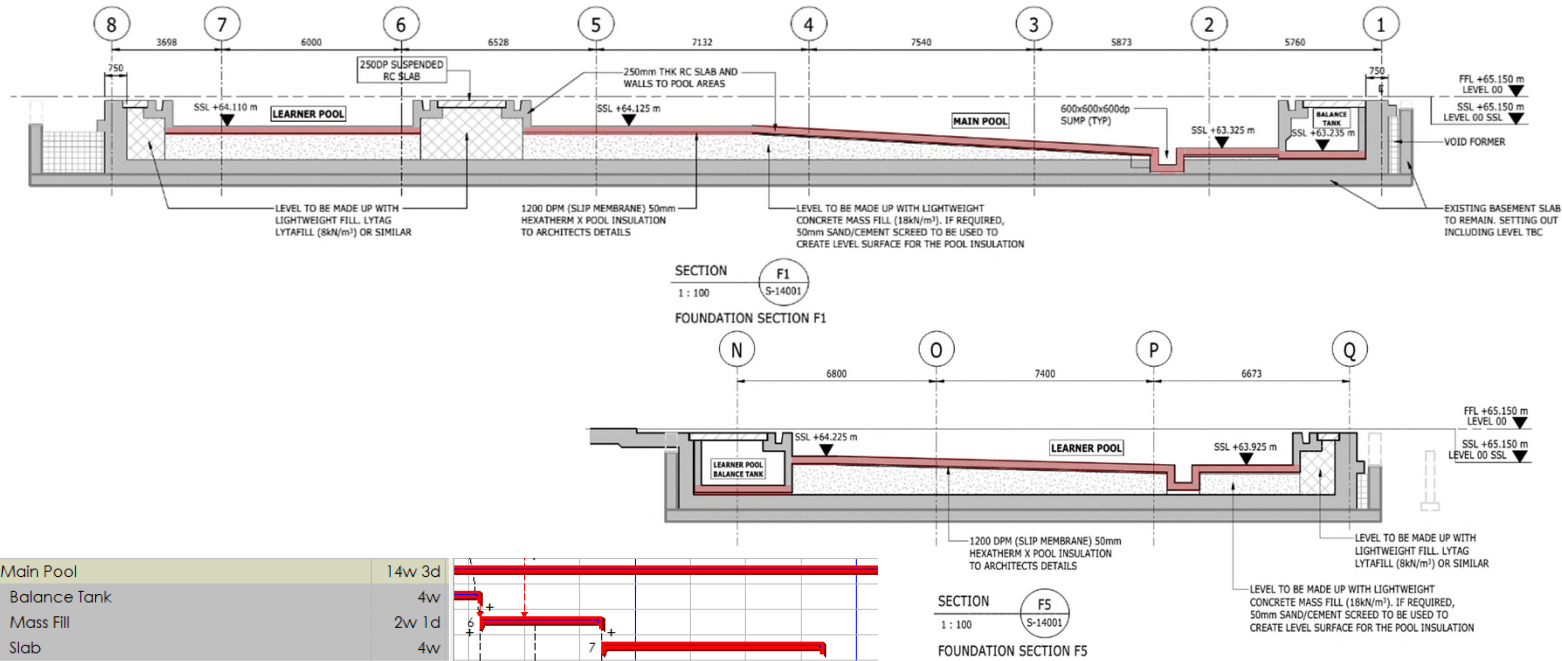


Substructure

Pool Structure - Base

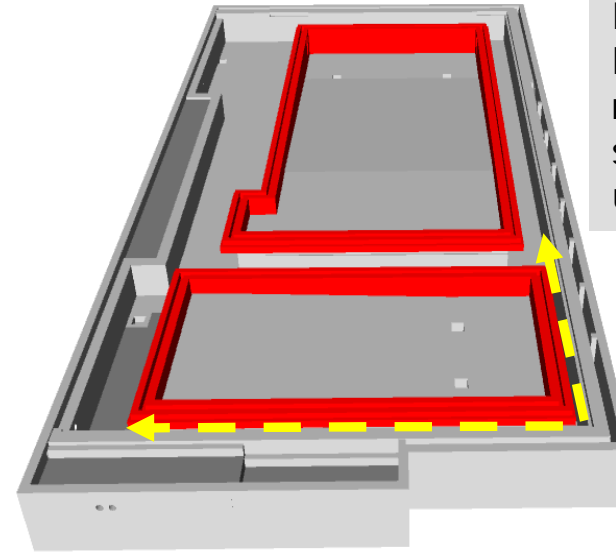
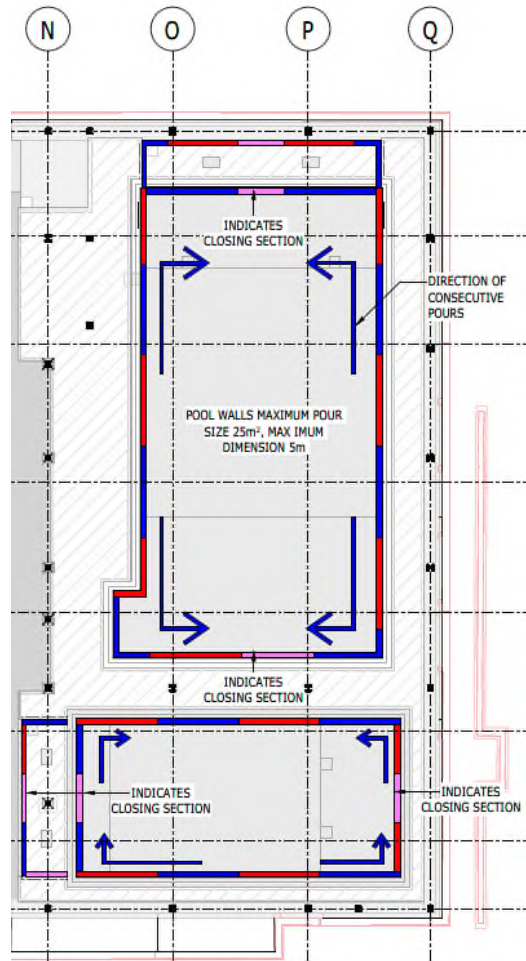


▣ Main Pool	14w 3d
⊕ Balance Tank	4w
⊕ Mass Fill	2w 1d
▣ Slab	4w
⊕ Pour 1	4d
⊕ Pour 2	4d
⊕ Pour 3	1w
⊕ Pour 4	1w 1d
⊕ Pour 5	1w 2d
⊕ Pour 6	1w 3d
⊕ Pour 7	1w 4d
⊕ Pour 8	2w
⊕ Walls	6w
▣ Learner Pool	14w 2d
⊕ Balance Tank	3w 3d
⊕ Mass Fill	2w 1d
▣ Slab	3w 2d
⊕ Pour 1	1w 1d
⊕ Pour 2	1w
⊕ Pour 3	1w 1d
⊕ Pour 4	1w 2d



Substructure

Pool Structure - Walls

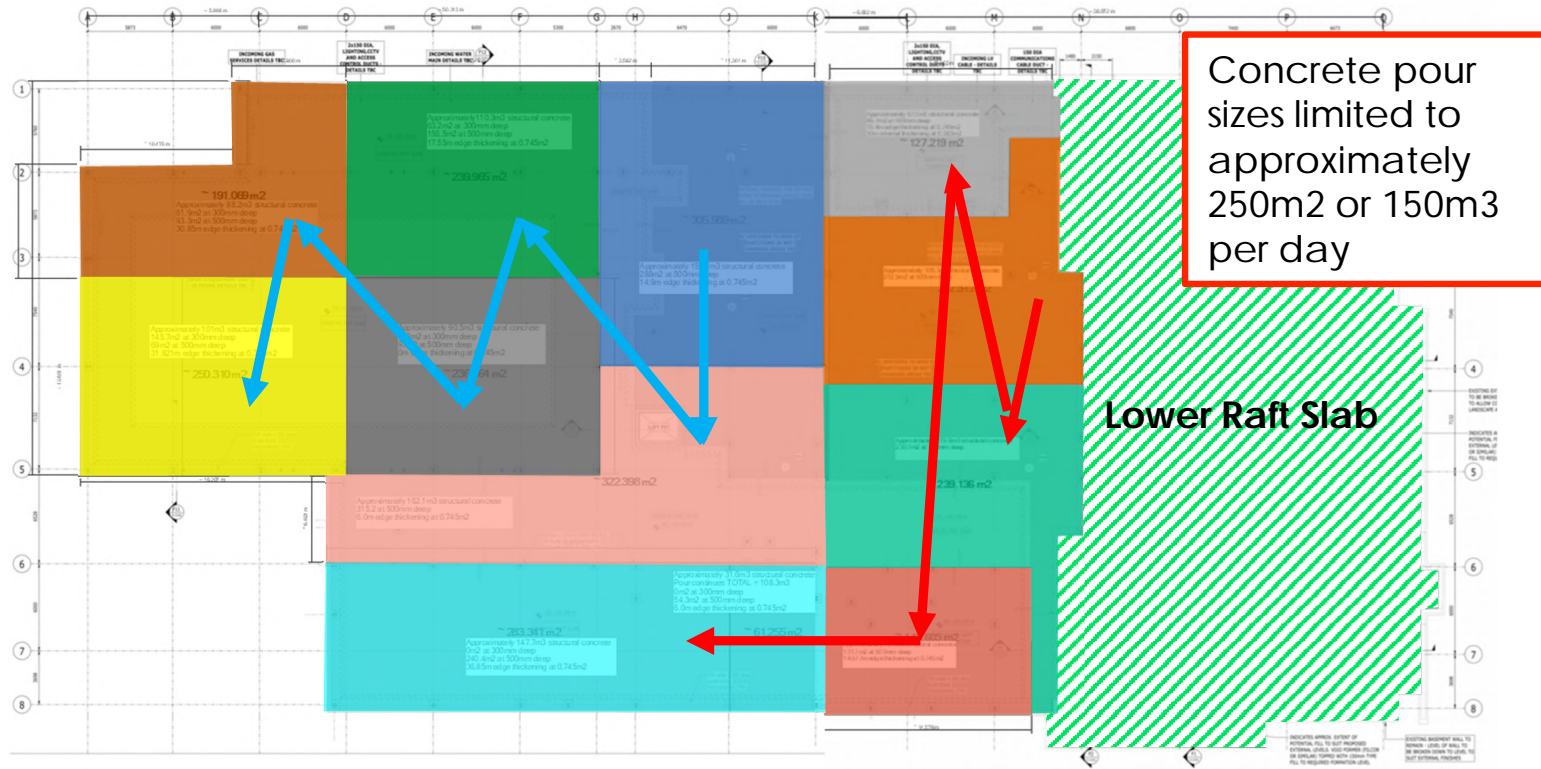


Risk around highlighted area regarding access – sacrificial shutters under review

Walls	6w	8	
Gang 1	6w	9	
Pour 1	4d	10	
Void former	1d	11	
Reinforcement	8eh	12	
Formwork	8eh	13	
Concrete	8eh	14	
Strike Formwork	1d	15	

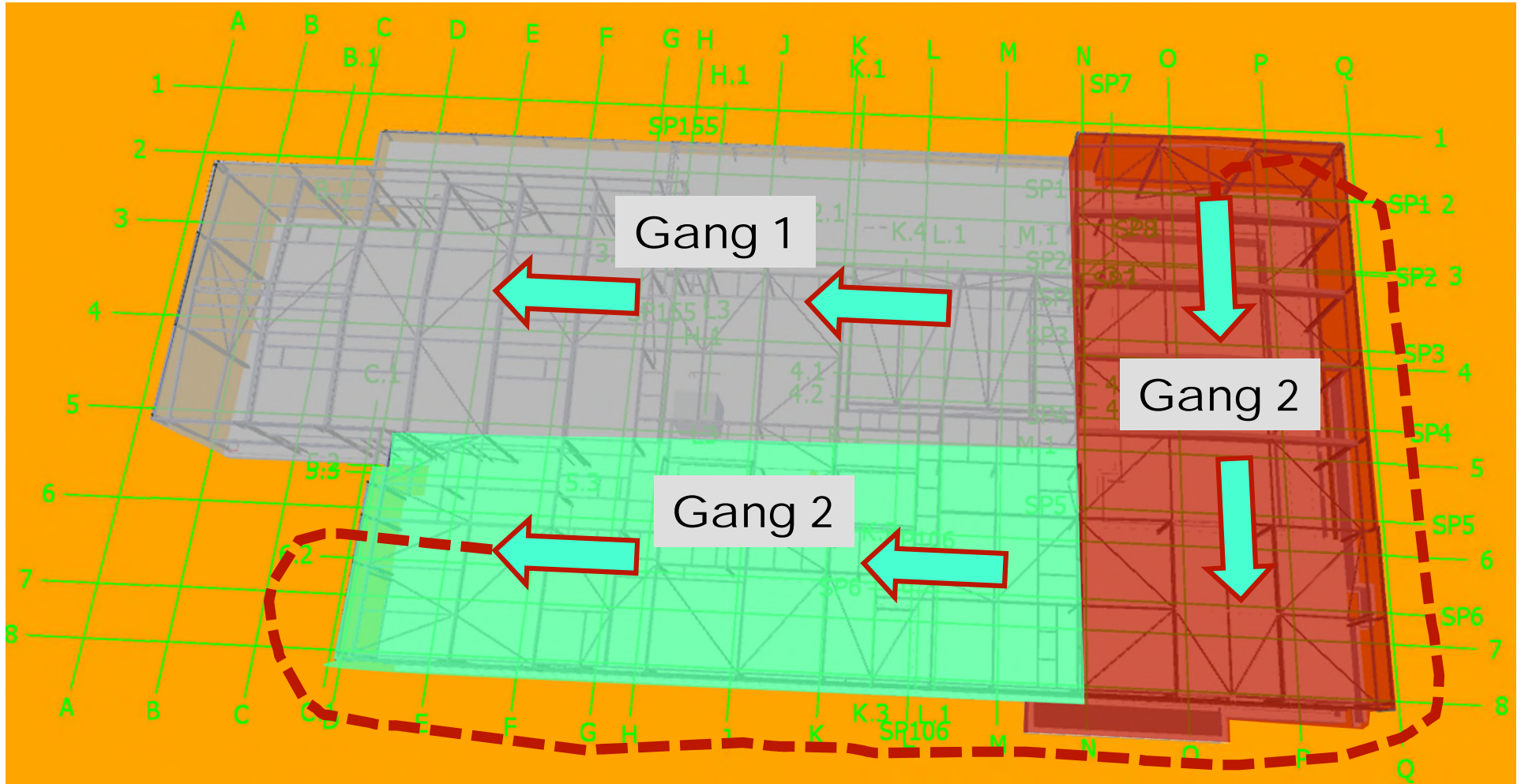
Substructure

Upper Raft Slab



Superstructure

Steel Erection

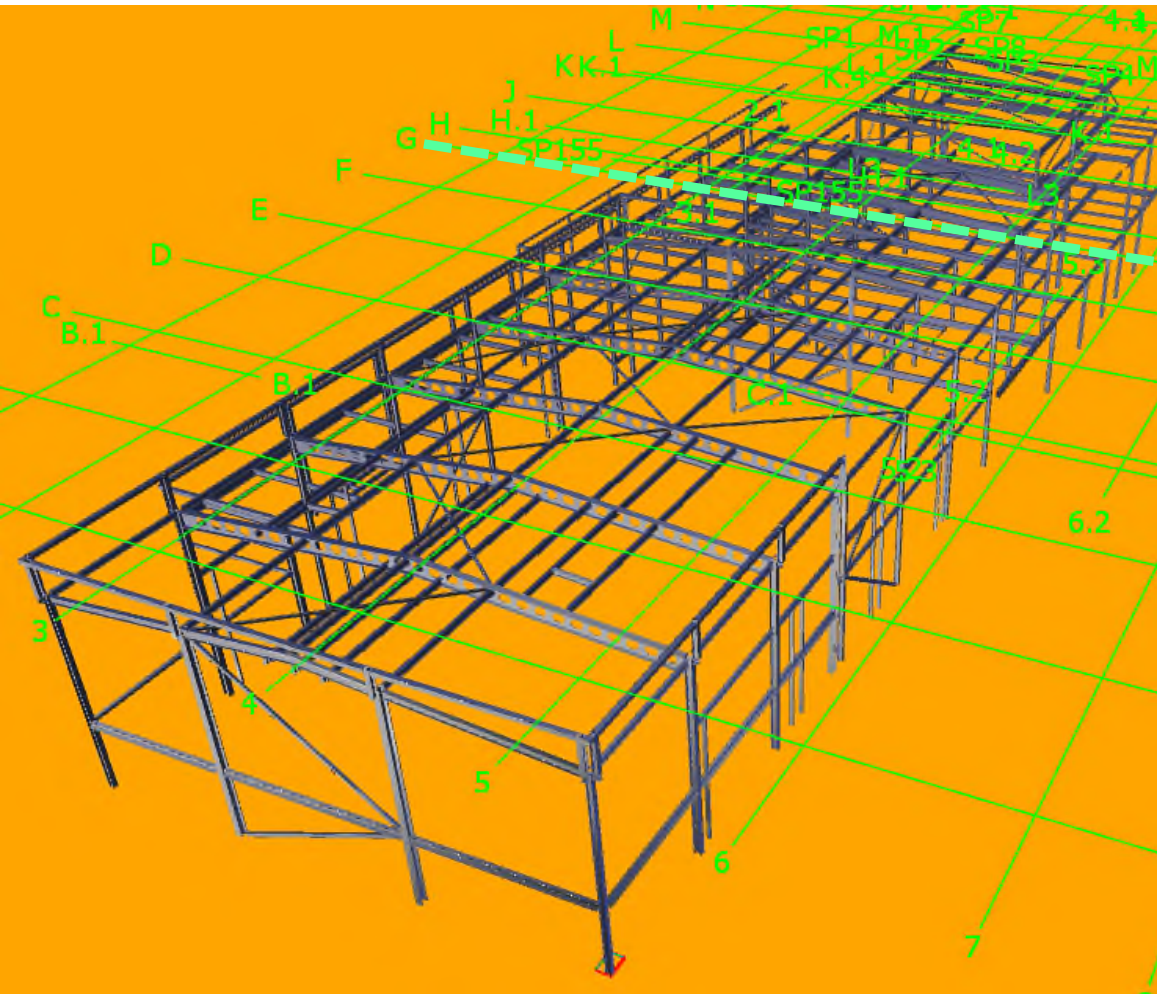




CONFIDENTIAL, NOT FOR DISTRIBUTION

Superstructure

Gang 1 – GL N-A, 1-5



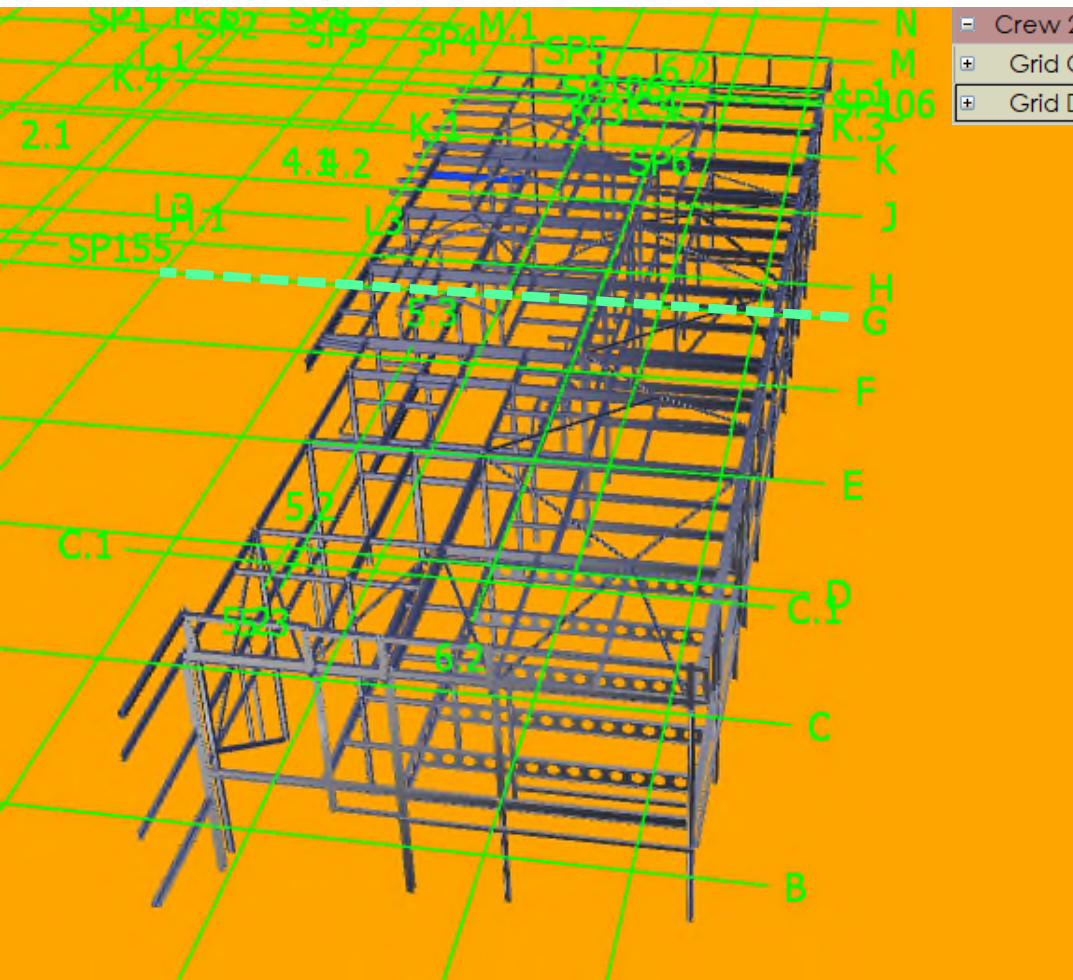
- Crew 1	6w 2d	3	
+ Grid G-N, 1-5	3w 3d	4	
+ Grid G-A, 1-5 Sports Hall	4w 3d	5	



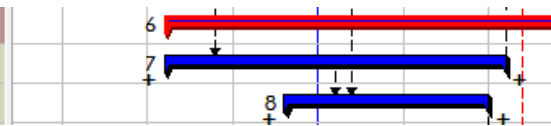
CONFIDENTIAL, NOT FOR DISTRIBUTION

Superstructure

Gang 2 - GL N-D, 5-8



▣ Crew 2	13w 2d
⊕ Grid G-N, 5-9	4w
⊕ Grid D-G, 5-8	2w 2d

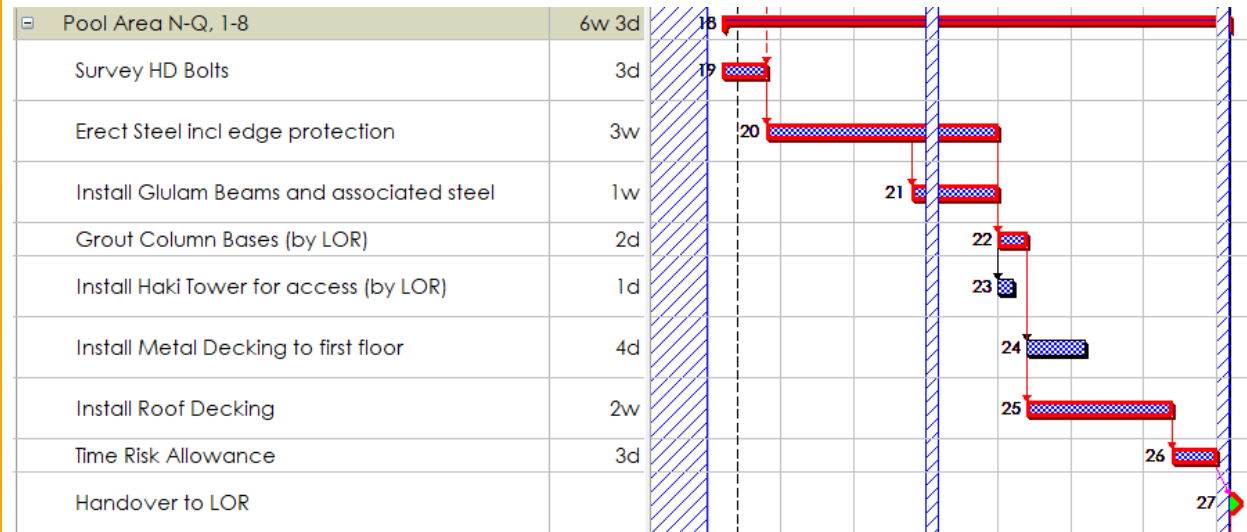
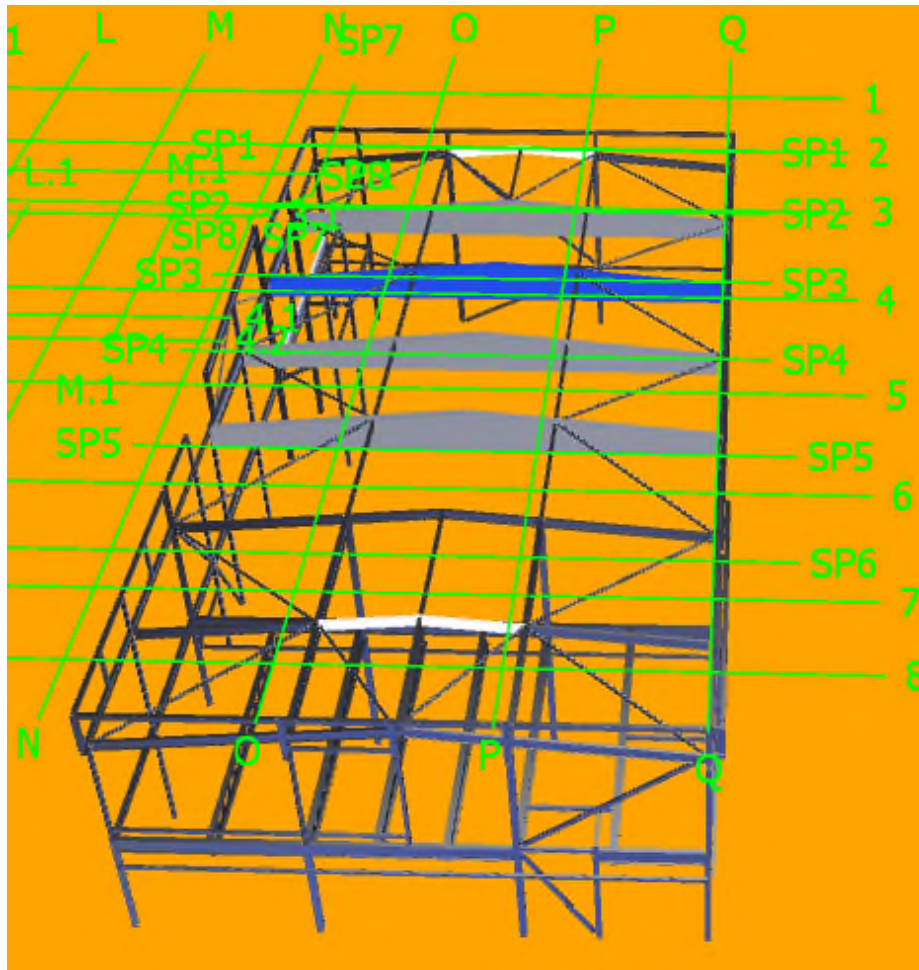




CONFIDENTIAL, NOT FOR DISTRIBUTION

Superstructure

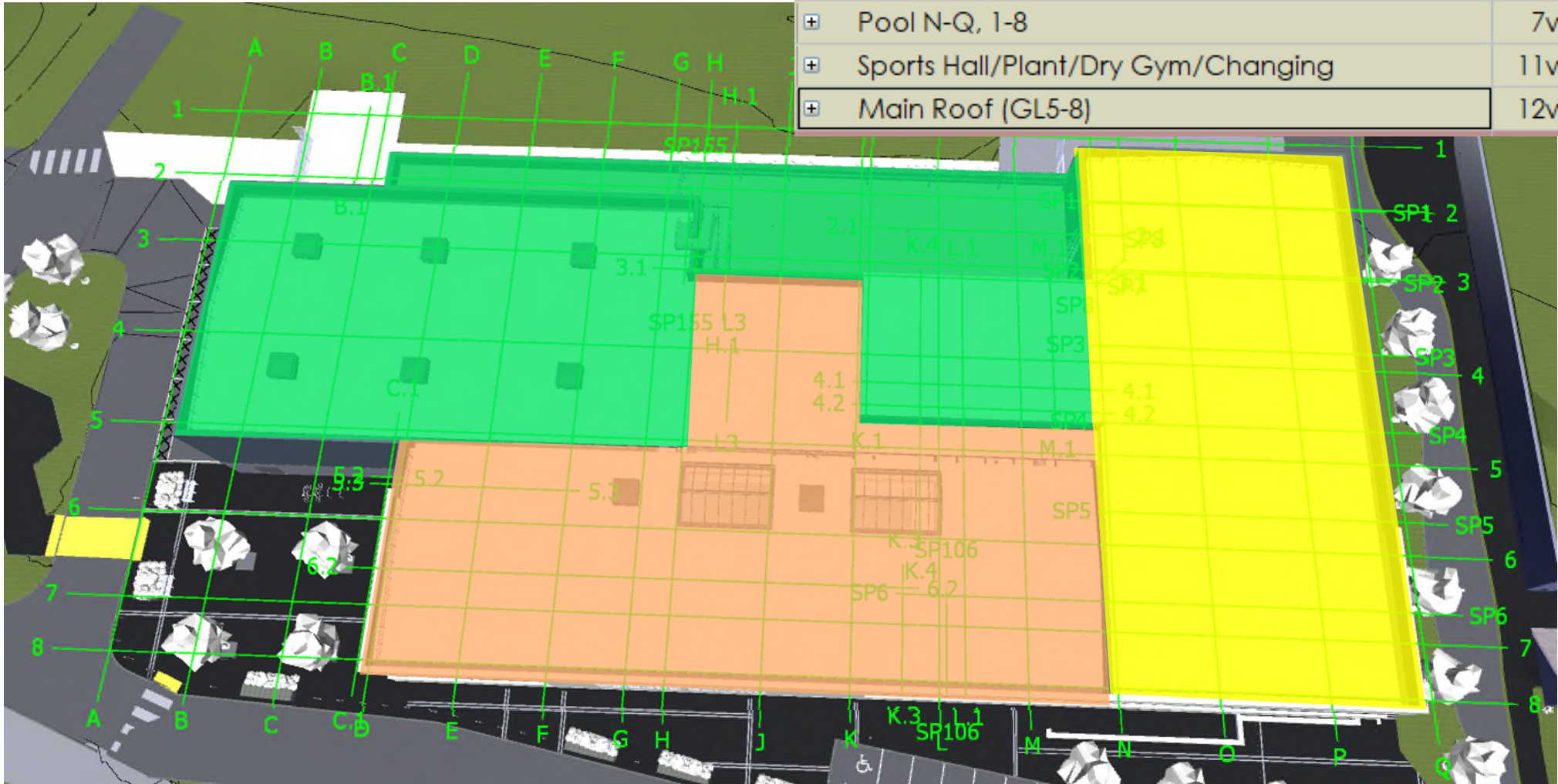
Gang 2 - Pool Hall Steel GL N-Q, 1-8



Envelope

Roofing - Overview

External Envelope	17w 2d
Roofing	17w 2d
Pool N-Q, 1-8	7w 4d
Sports Hall/Plant/Dry Gym/Changing	11w 4d
Main Roof (GL5-8)	12w 1d

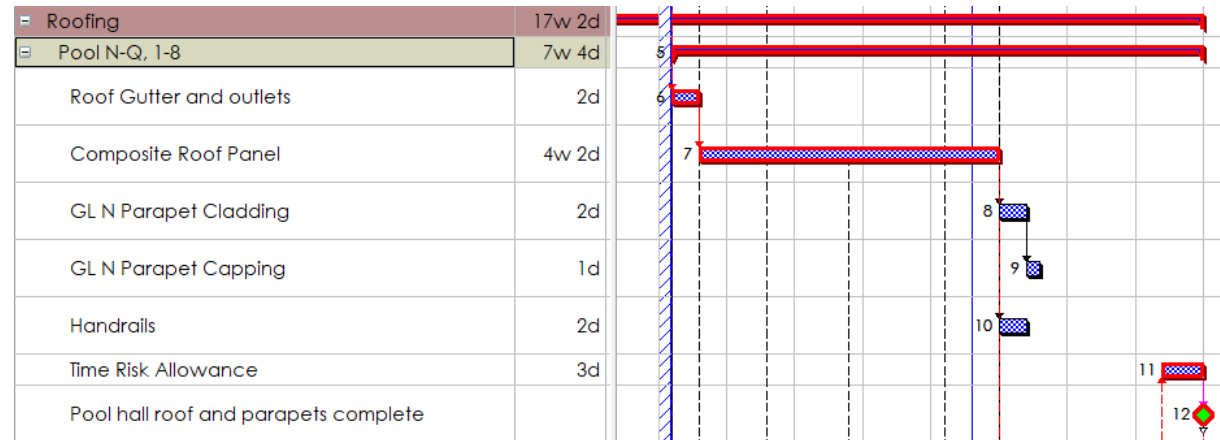
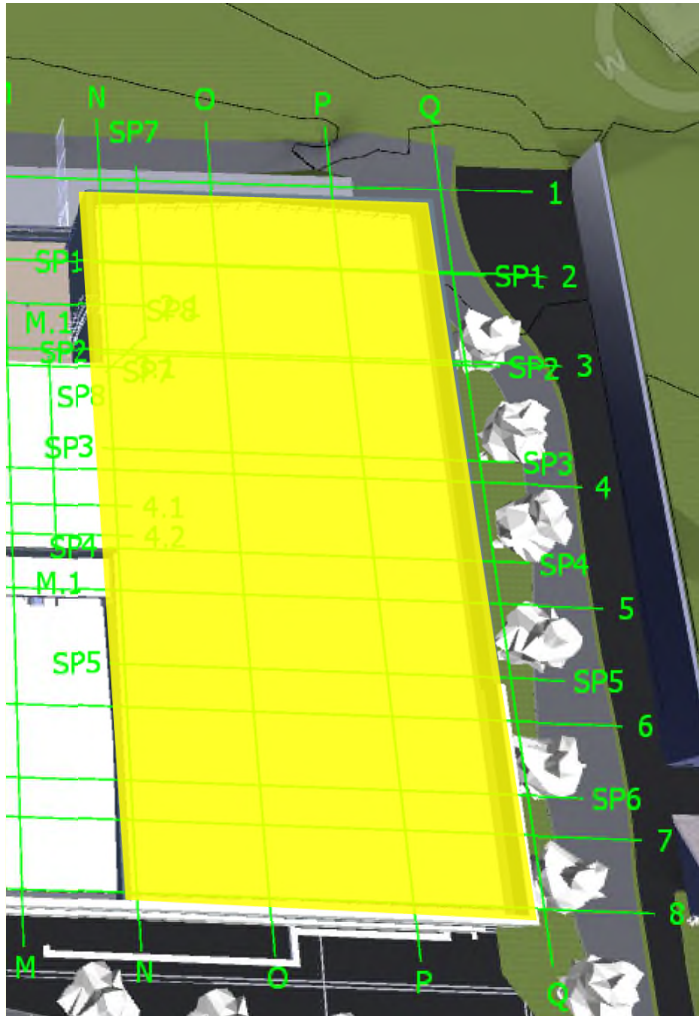




CONFIDENTIAL, NOT FOR DISTRIBUTION

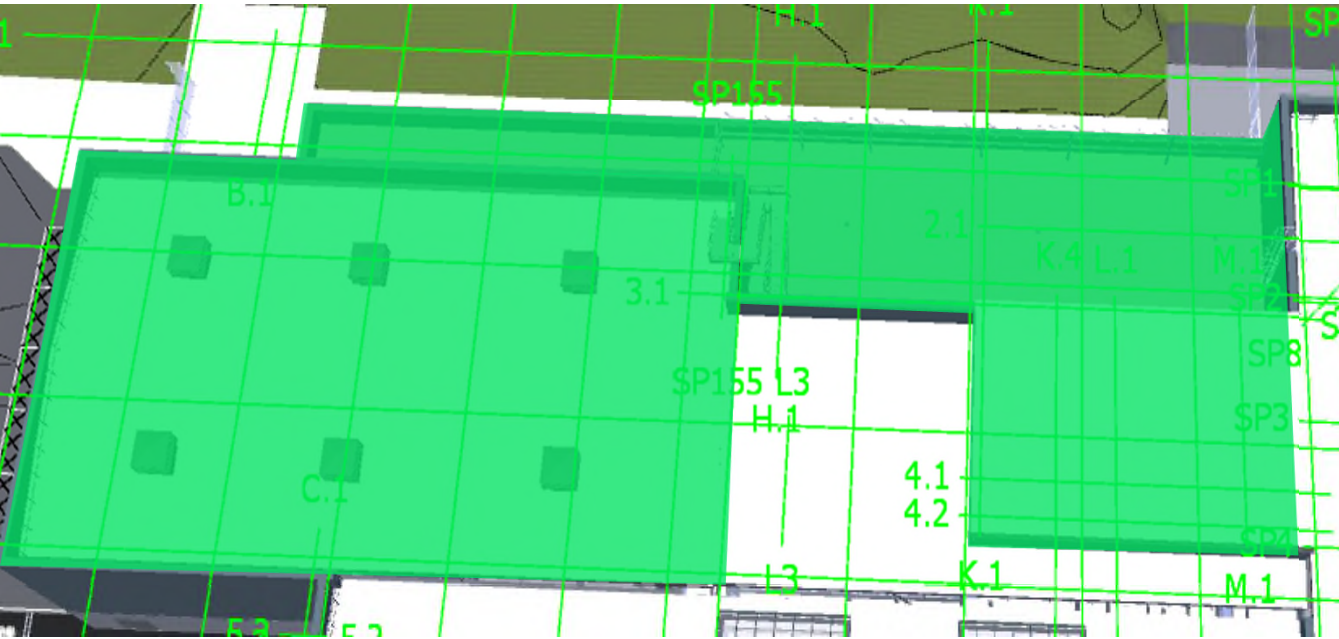
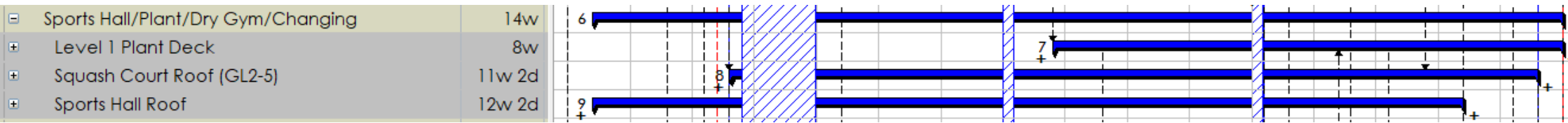
Envelope

Roofing – Pool Hall



Envelope

Roofing – Plant Deck and Squash Court



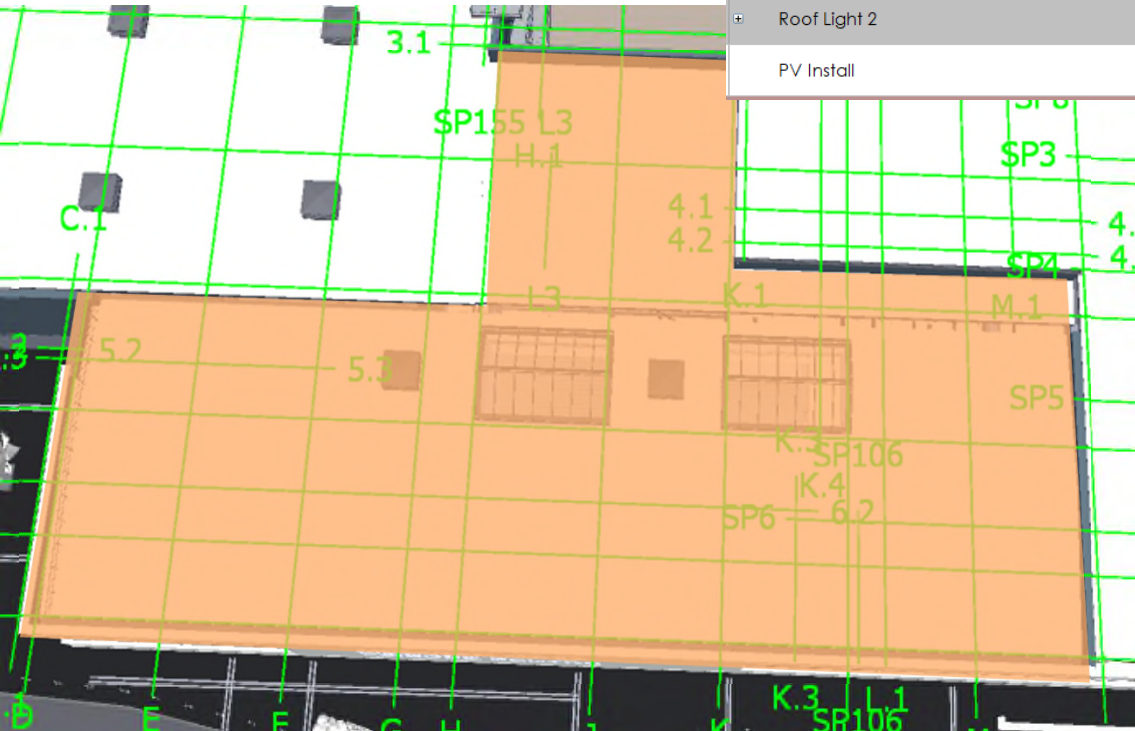
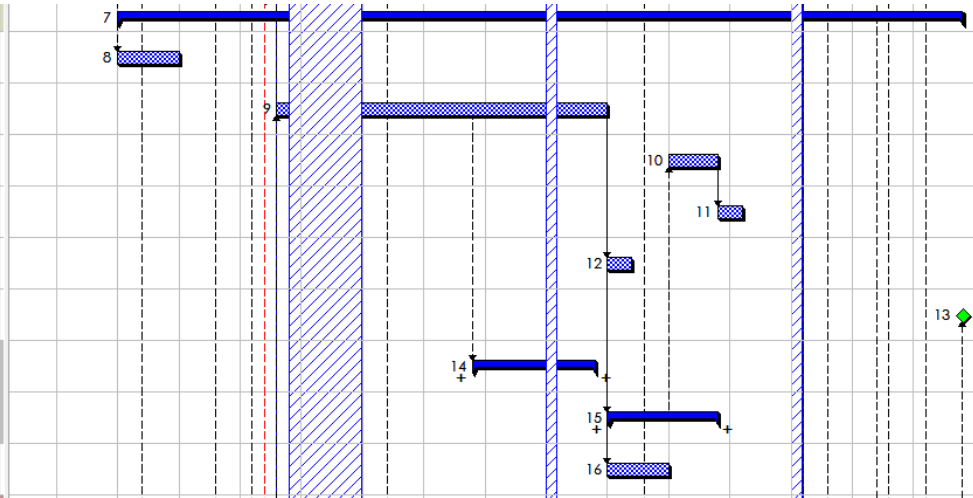


CONFIDENTIAL, NOT FOR DISTRIBUTION

Envelope

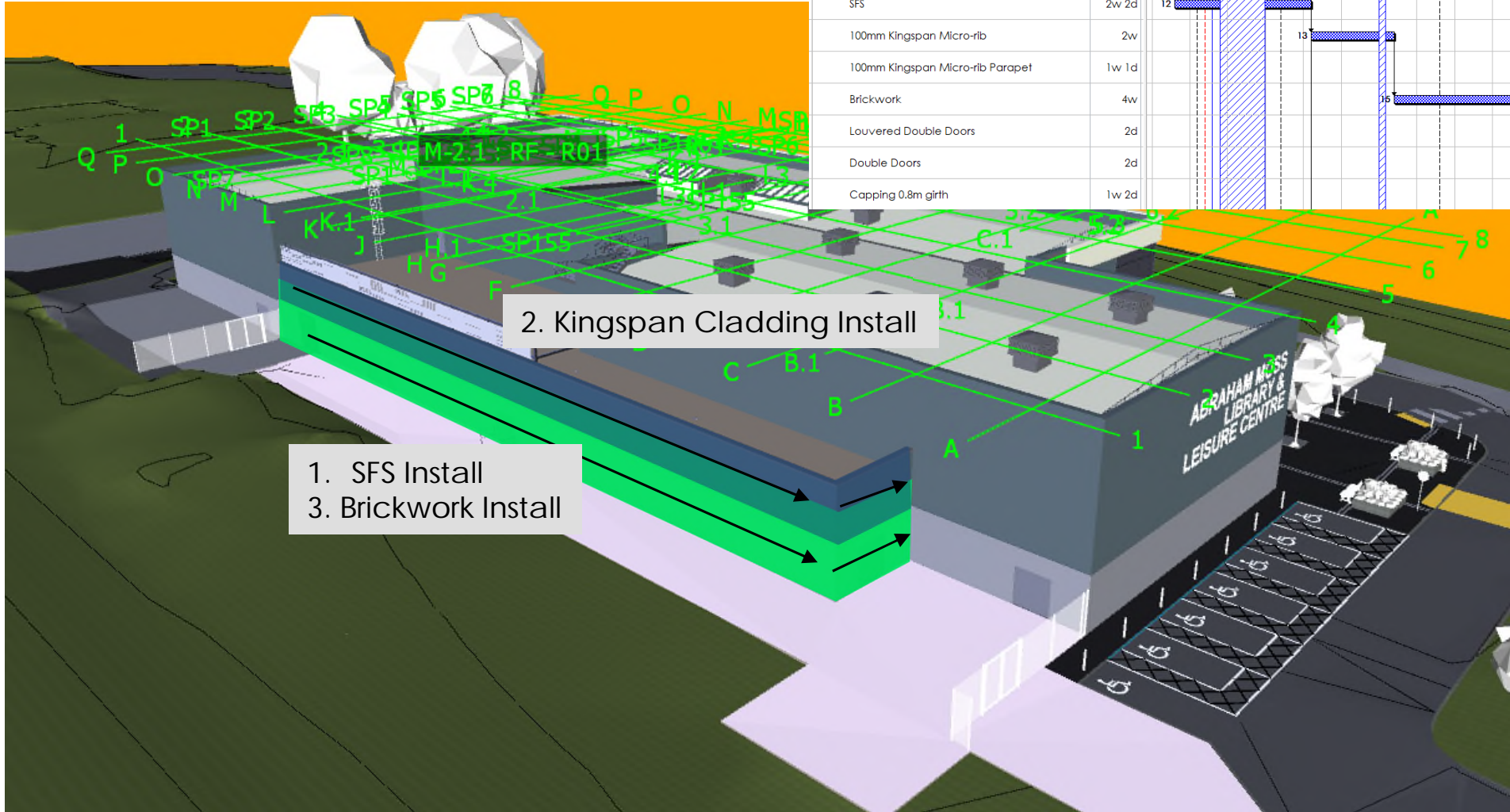
Roofing - Main Roof

[-] Main Roof (GL5-8)	12w 1d
Gutter Grid Line 8	1w
Composite Panels to Main Roof	4w
Roof Cowl Upstands (2nr)	4d
Roof Cowl Installs (2nr)	2d
GL N Parapet Cladding	2d
Main Roof Complete	
[+] Roof Light 1	1w 4d
[+] Roof Light 2	1w 4d
PV Install	1w

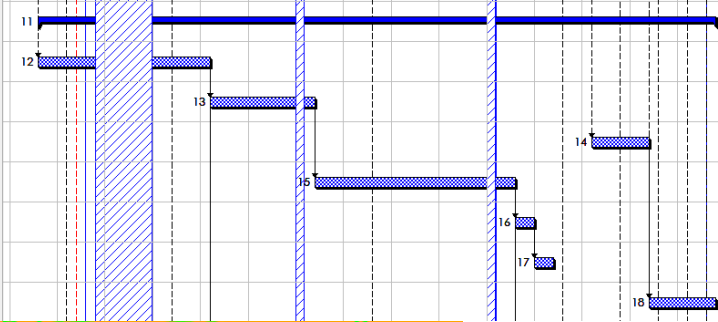


Elevations

North Elevation

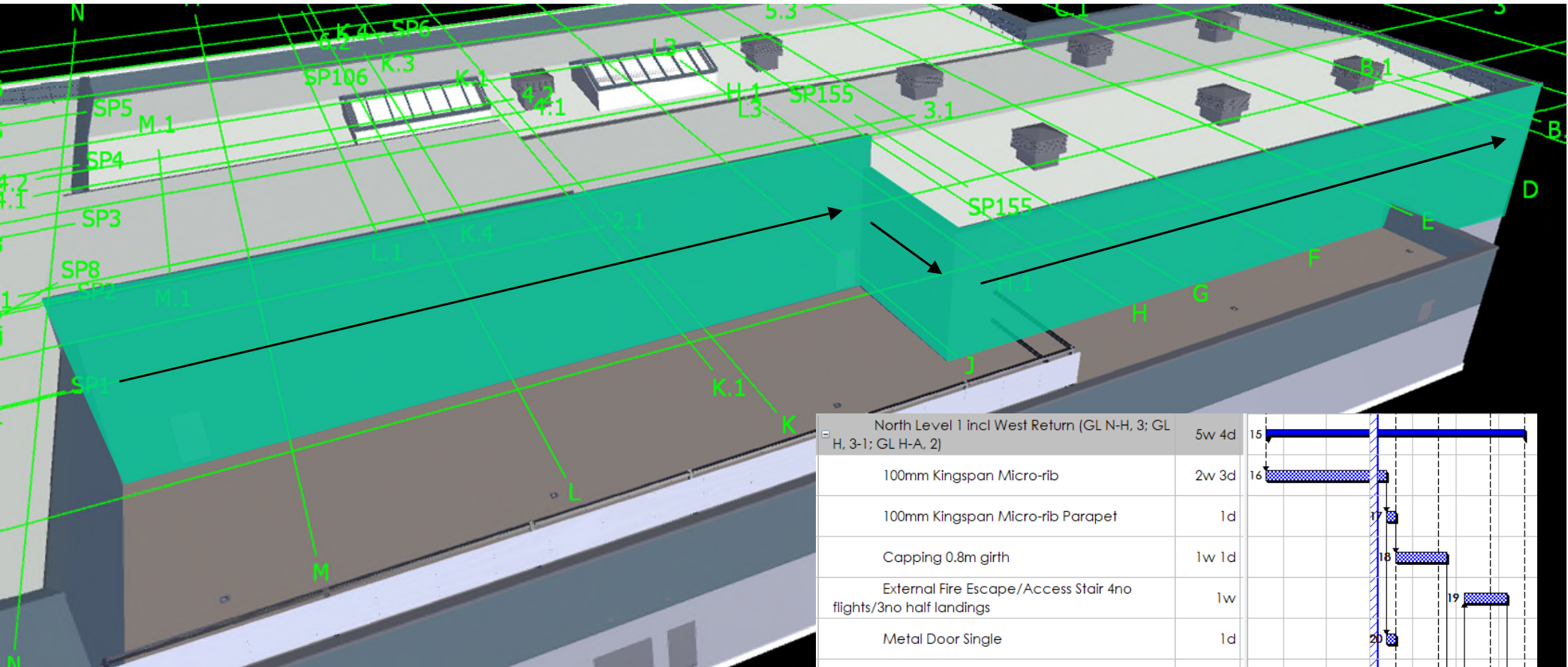


North (Ground Level) Inc. East Return (GL N-C, 1; GL C, 1-2)	12w 3d
SFS	2w 2d
100mm Kingspan Micro-rib	2w
100mm Kingspan Micro-rib Parapet	1w 1d
Brickwork	4w
Louvered Double Doors	2d
Double Doors	2d
Capping 0.8m girth	1w 2d



Elevations

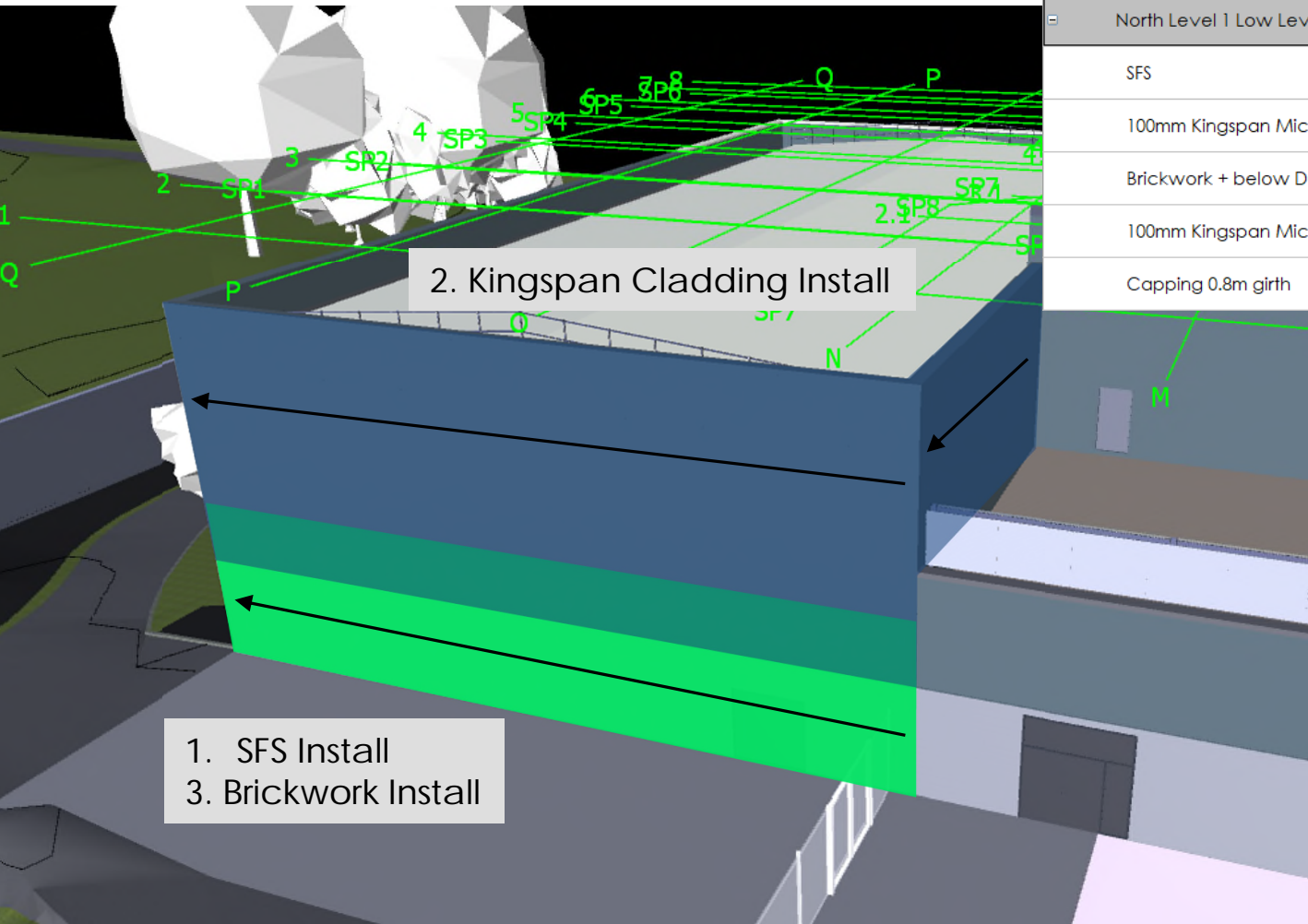
North Elevation



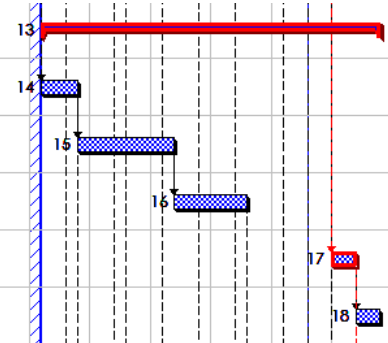
North Level 1 incl West Return (GL N-H, 3; GL H, 3-1; GL H-A, 2)	5w 4d	15
100mm Kingspan Micro-rib	2w 3d	16
100mm Kingspan Micro-rib Parapet	1d	17
Capping 0.8m girth	1w 1d	18
External Fire Escape/Access Stair 4no flights/3no half landings	1w	19
Metal Door Single	1d	20
Cat Ladder to high level roof	2d	21
Plant Screen	2d	22

Elevations

North Elevation



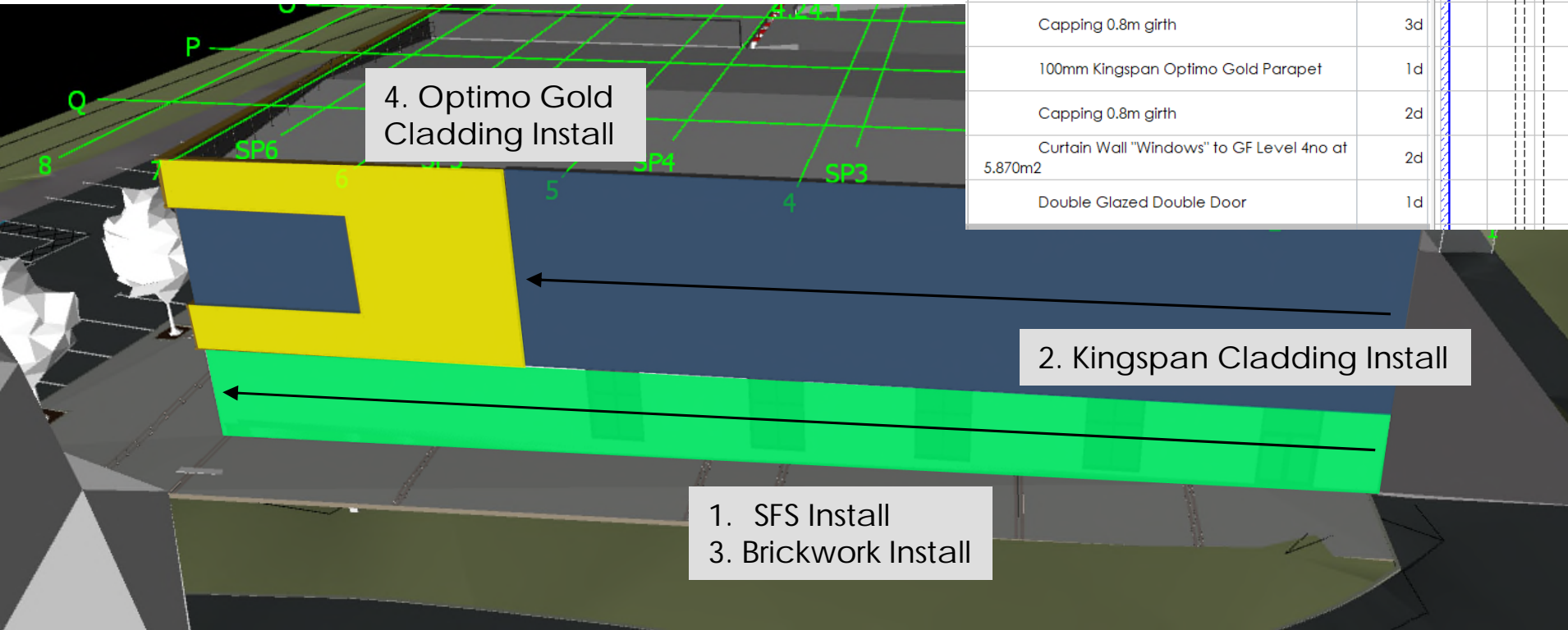
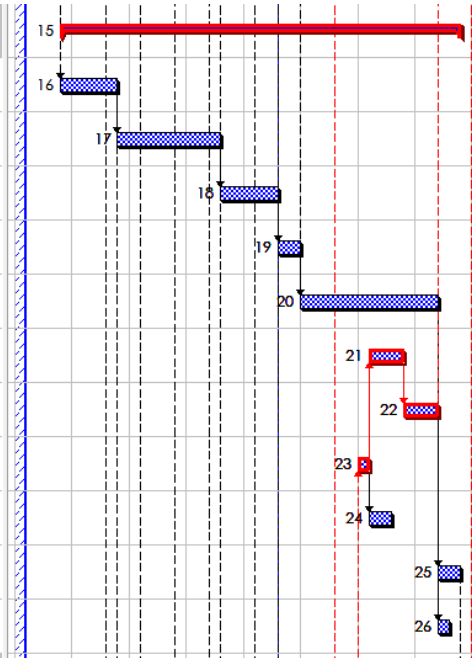
North Level 1 Low Level incl West Return	5w 3d
SFS	3d
100mm Kingspan Micro-rib	1w 3d
Brickwork + below DPC	1w 1d
100mm Kingspan Micro-rib Rear Parapet	2d
Capping 0.8m girth	2d



Elevations

East Elevation

East Elevation (GL Q, 1-8)	7w
SFS	1w
100mm Kingspan Micro-rib	1w 4d
Kingspan Optimo Gold incl Micro Rib Feature	1w
Micro Rib Feature	2d
Brickwork	2w 2d
100mm Kingspan Micro-rib Parapet	3d
Capping 0.8m girth	3d
100mm Kingspan Optimo Gold Parapet	1d
Capping 0.8m girth	2d
Curtain Wall "Windows" to GF Level 4no at 5,870m2	2d
Double Glazed Double Door	1d





CONFIDENTIAL, NOT FOR DISTRIBUTION

Elevations

South Elevation

Activity	Duration	Start	End
South (GL D-N, 8)	14w	24	25
SFS	1w 2d	25	26
Signage Installation First Fix	4d	26	27
Kingspan Optimo Gold Incl Micro Rib Feature	2w 3d	27	29
Microrib feature within Feature	3d	29	30
Kingspan Optimo to parapet	1w	30	31
Capping 0.8m girth	1w	31	32
Brickwork + below DPC	2w 4d	32	34
Erect Loading Tower to Gym (GL8/N)	3d	34	35
Loading Tower Available	5w 1d	35	38
Infill Curtain Walling after Removal of Scaffold Tower	4d	38	39
Dismantle Loading Tower	3d	39	40
Brickwork to DPC below curtain wall	1d	40	41
Curtain Wall Glazing	1w 2d	41	42
Curtain wall feature	2d	42	43



2. Optimo Gold Cladding Install

4. Glazing Install

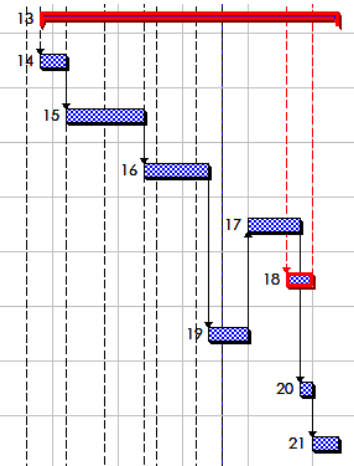
1. SFS Install
3. Brickwork Install

Area to be left out for Scaffold Platform - Infill later

Elevations

South Elevation

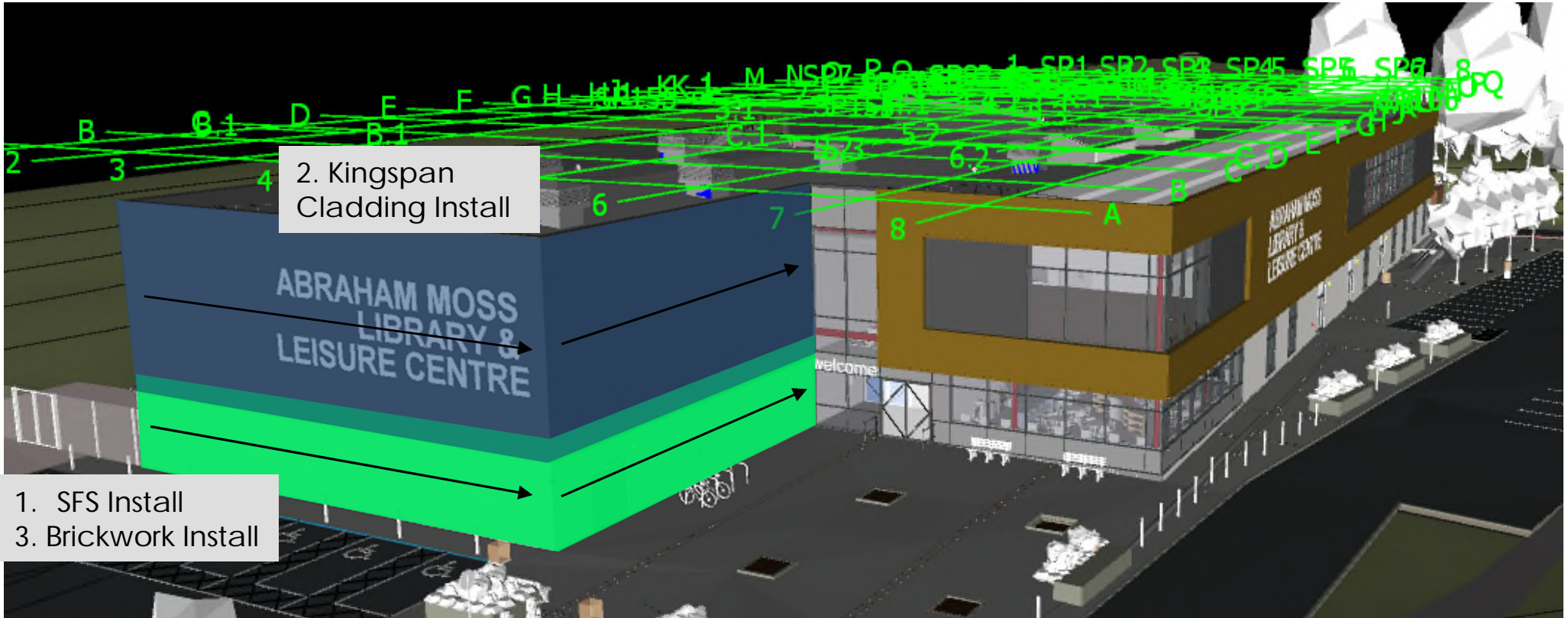
Task	Duration
South (Pool Hall) (GL N-Q, 8)	4w 3d
SFS	2d
Kingspan Optimo Gold incl Micro Rib Feature	1w 1d
Microrib within Optimo Cladding	1w
Brickwork + below DPC	4d
Kingspan Optimo Gold Parapet	2d
Curtain Wall Glazing within Optimo Cladding	3d
Curtain Wall "Windows" to GF Level 4no 5.870m2	1d
Curtain Wall Glazing to GF	2d





Elevations

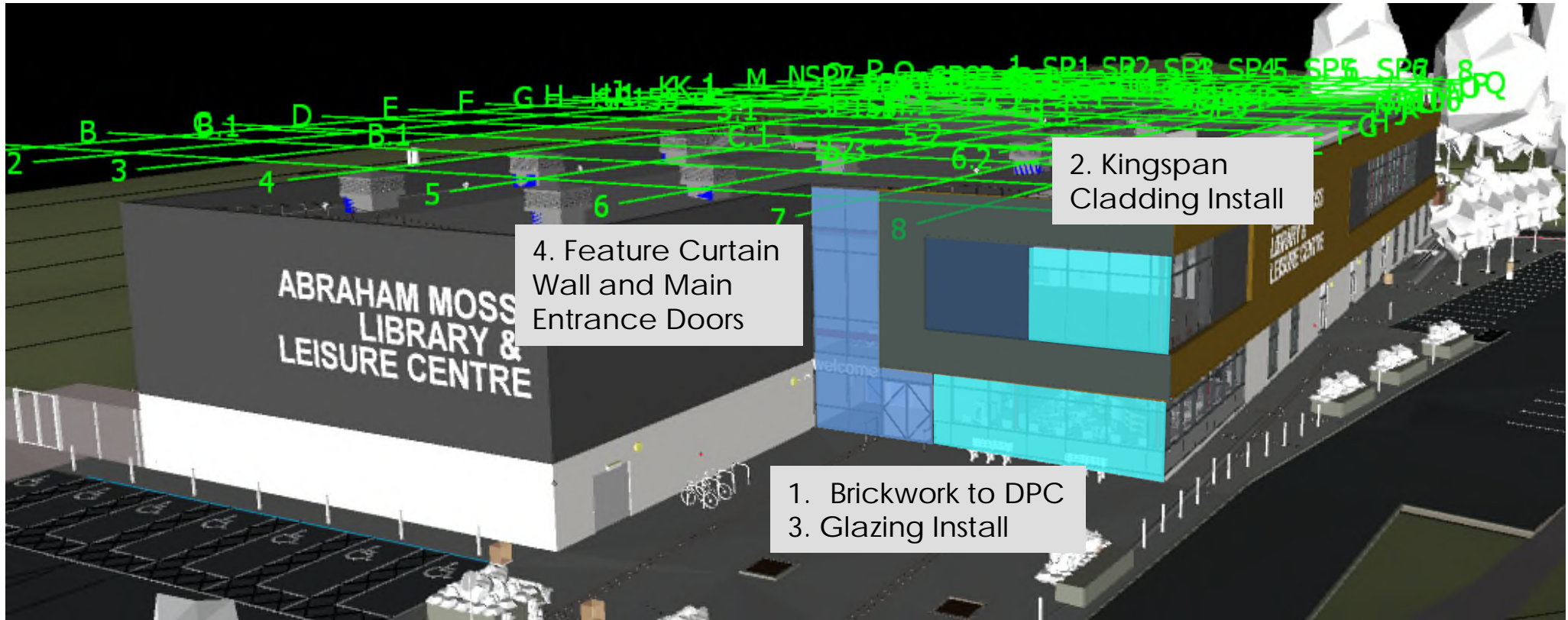
West Elevation





Elevations

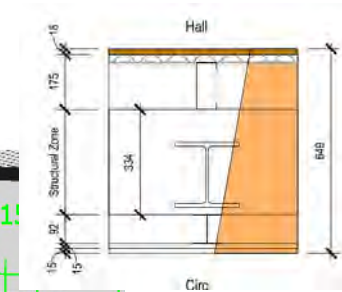
West Elevation





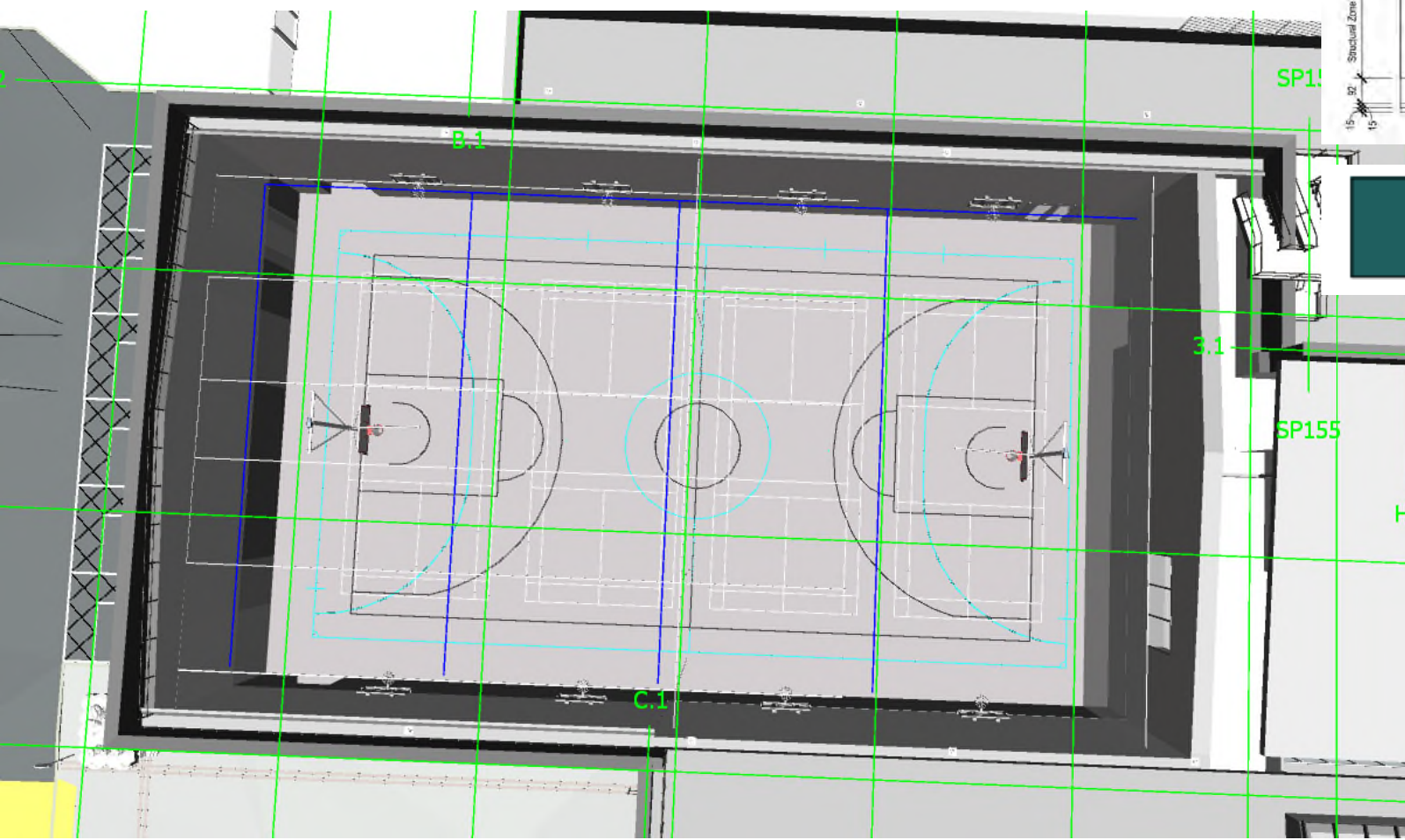
CONFIDENTIAL, NOT FOR DISTRIBUTION

Fit Out Sports Hall



Internal Wall Type IW-WT6: REF IW-WT6
 Party Wall - Double Stud+SFS Specialist Sport Hall Wall

- 18mm WBP ply phenolic coated laminate face rebound boards. Vertical board joints to be continuously supported by strips of 18mm ply, horizontal battens notched to suit.
- 25mm solid sw battens
- 1x150mm Knauf SFS Stud 1.5mm Gauge at 400mm centres.
- 334mm Void-Structural zone.
- 1x92mm Knauf I Studs [0.55] at 400 mm centres
- 2no. layers 15mm Knauf Soundshield Plus board



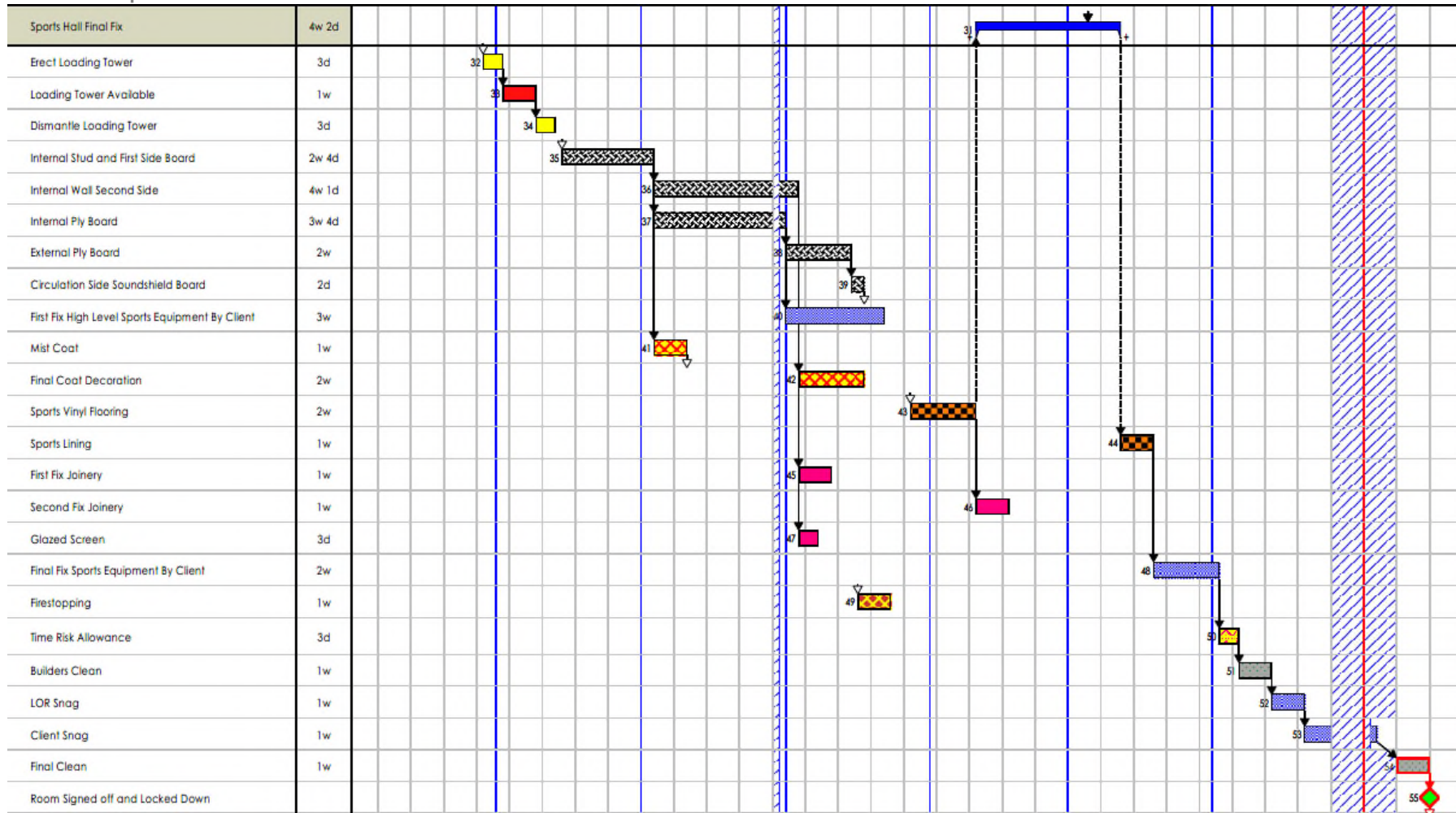
F10 - Sports Vinyl - Ss_30_42_72_72



CONFIDENTIAL, NOT FOR DISTRIBUTION

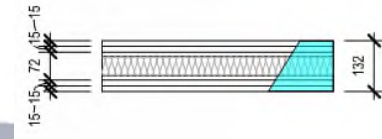
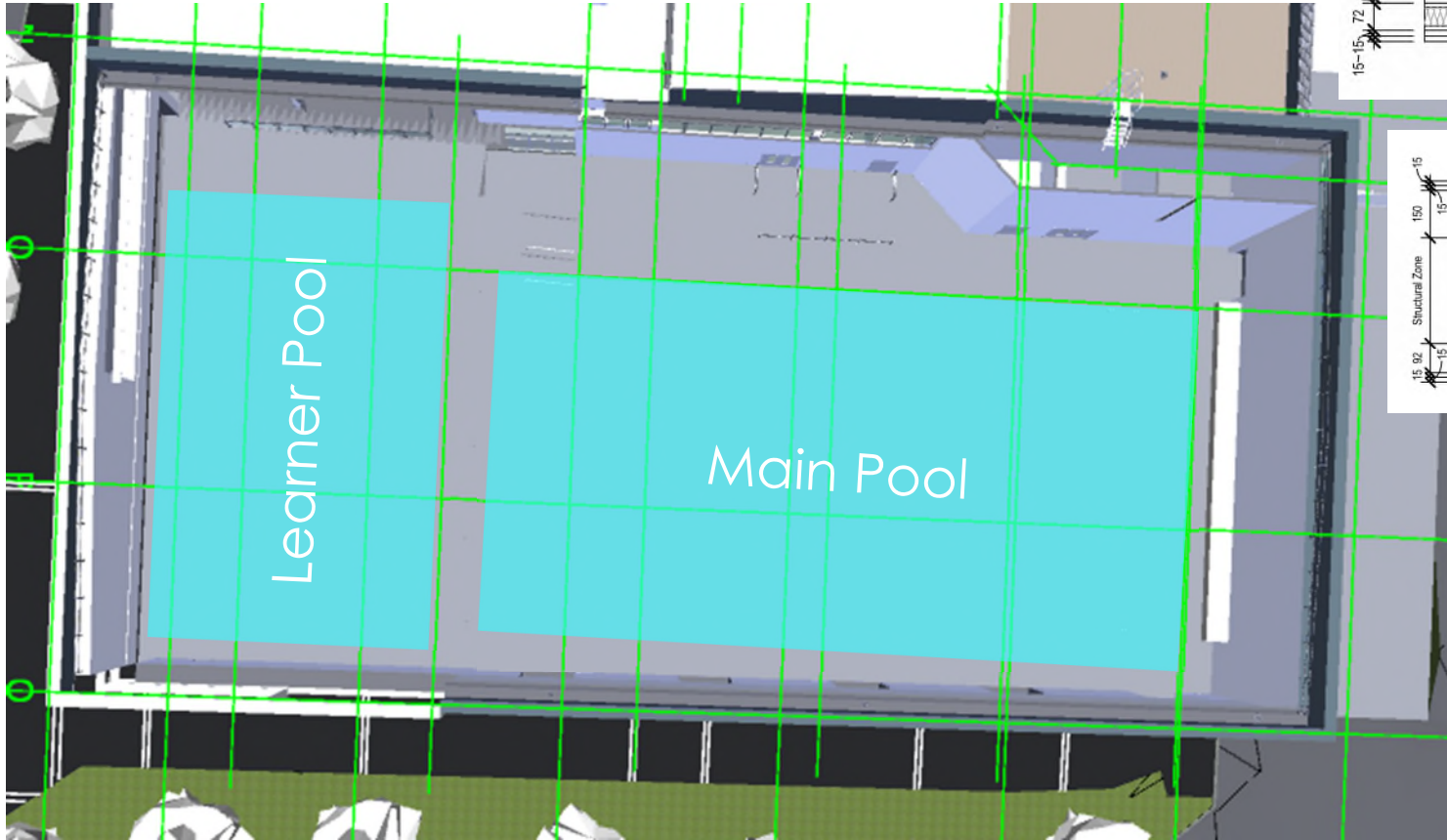
Fit Out

Sports Hall sequence



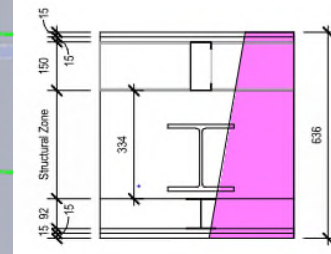
Fit Out

Pool Hall



Internal Wall Type IW-WT7: REF IW-WT7
Party Wall - Single Stud/Insulation

- 2no. layers 15mm Knauf Soundshield Plus board
- 70mm Knauf C Stud [0.55] at 600mm Centres
- 50mm Knauf Earthwool Acoustic partition roll
- 2no. layers 15mm Knauf Soundshield Plus board



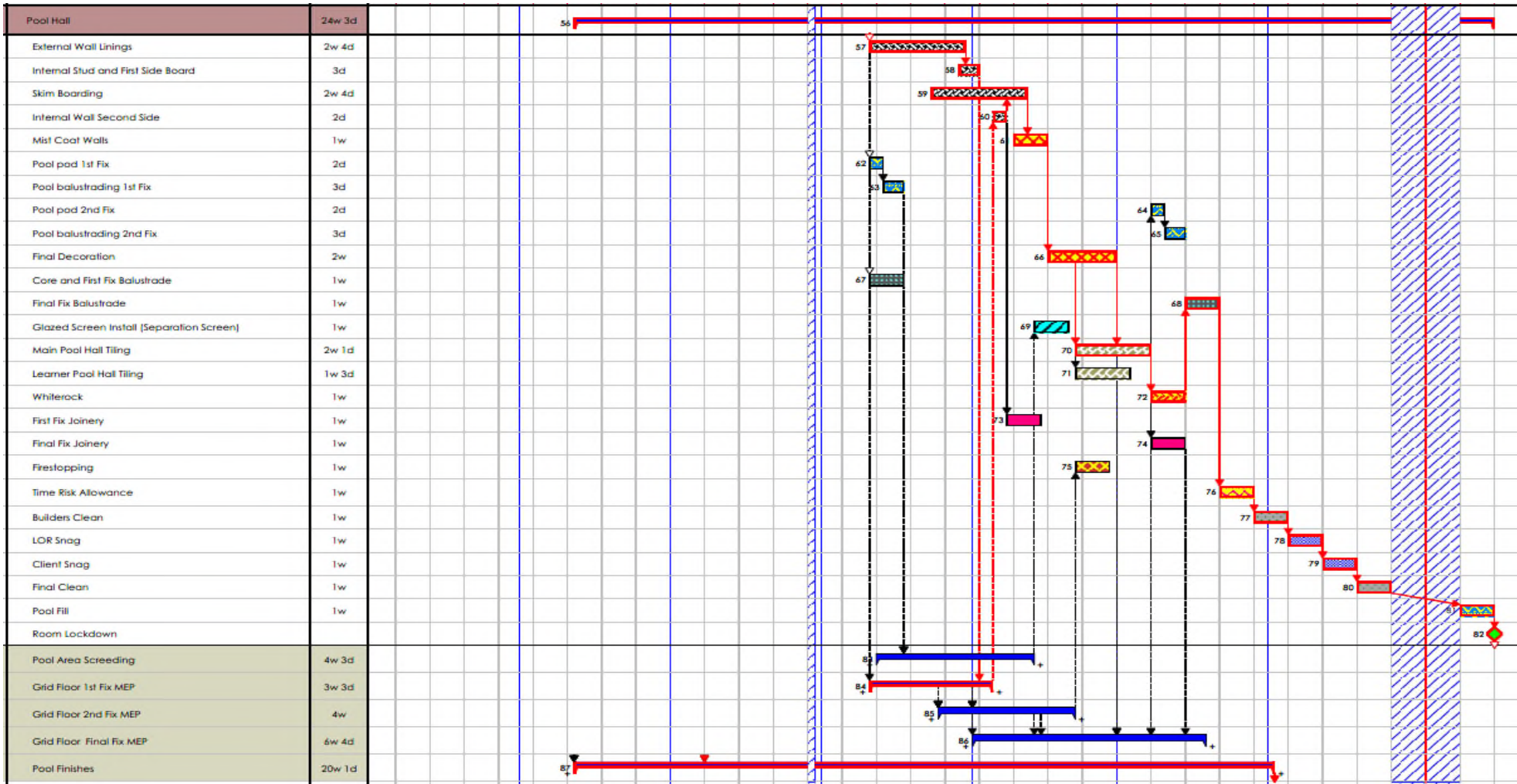
Internal Wall Type G: REF IW-WT5
Twin wall Party Wall - Double stud+SFS Wall

- 2no. layers 15mm Knauf Soundshield Plus board
- 1x150mm Knauf SFS Stud 1.5mm Gauge at 400mm centres
- 334mm Void-Structural zone
- 1x92mm Knauf I Studs [0.55] at 400 mm centres
- 2no. layers 15mm Knauf Soundshield Plus board



Fit Out

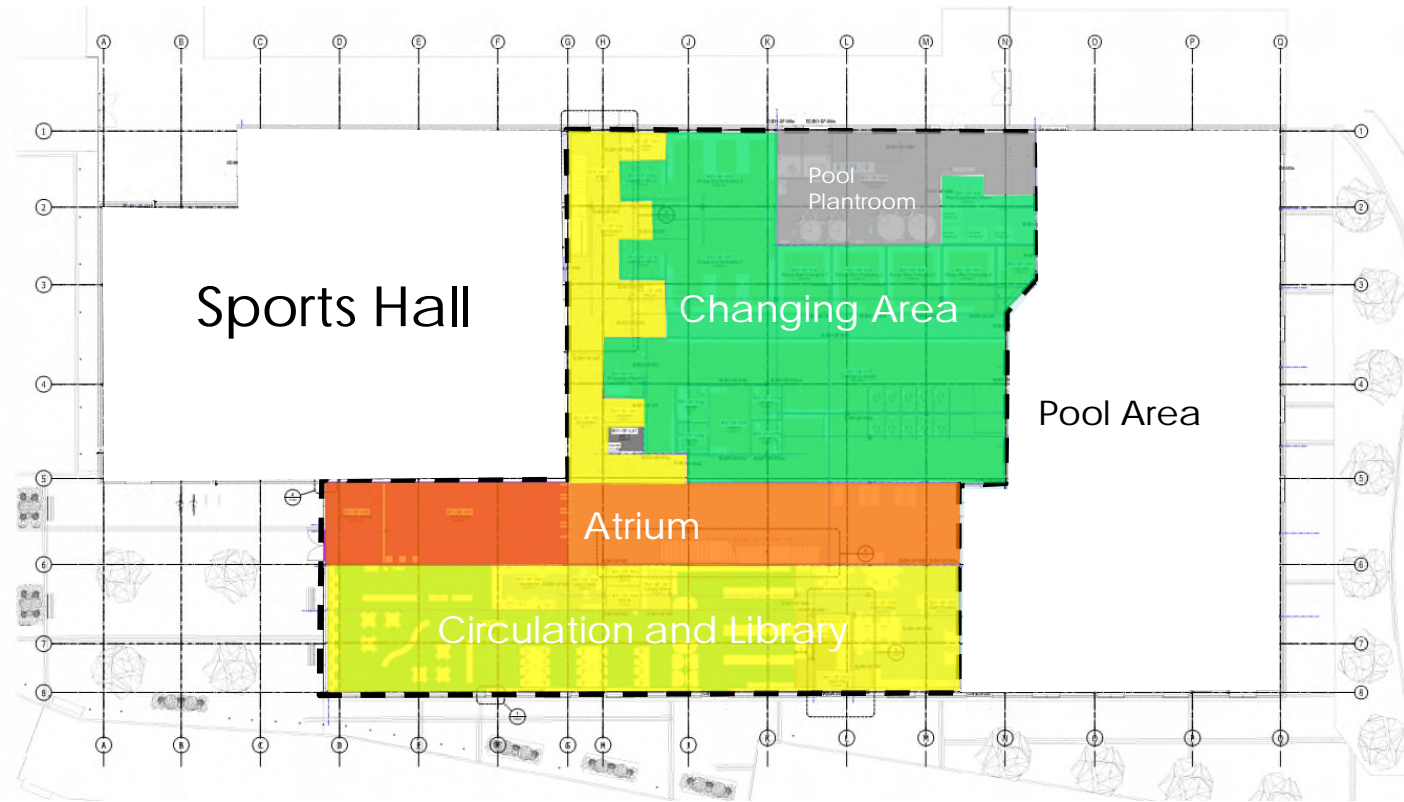
Pool Hall





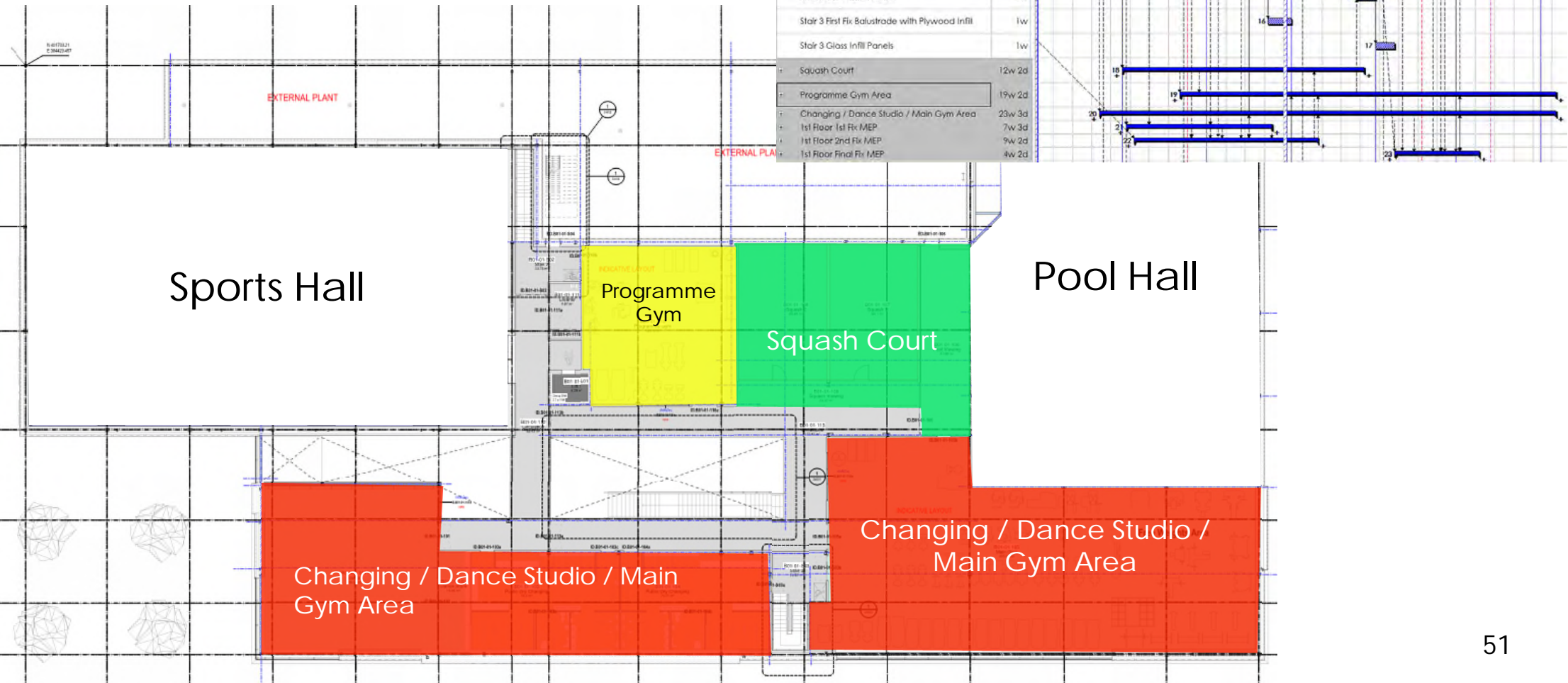
Fit Out

Central Zone – Ground Floor



Fit Out

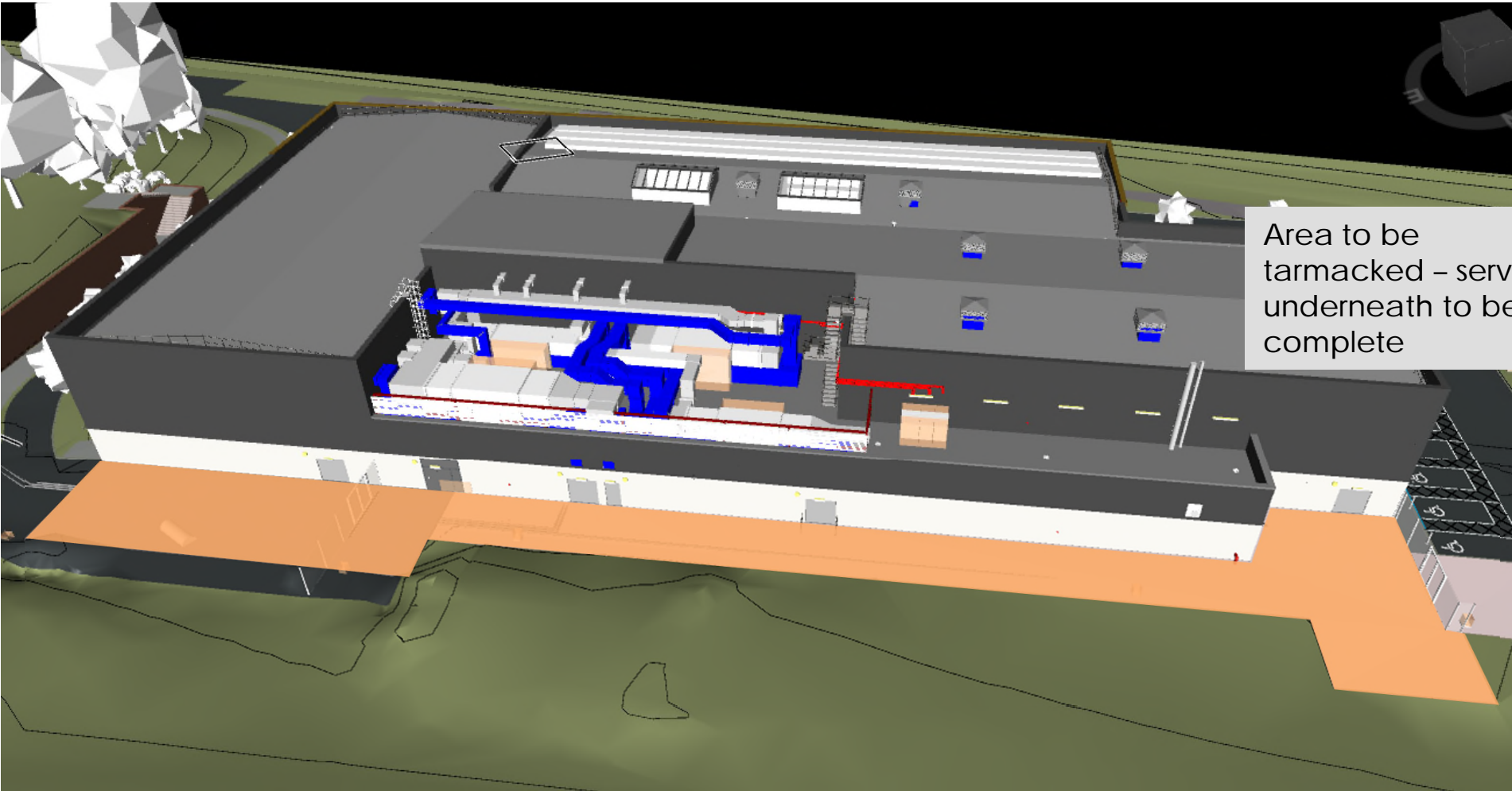
Central Zone – First Floor





External Works

North Elevation



Area to be tarmacked - services underneath to be complete

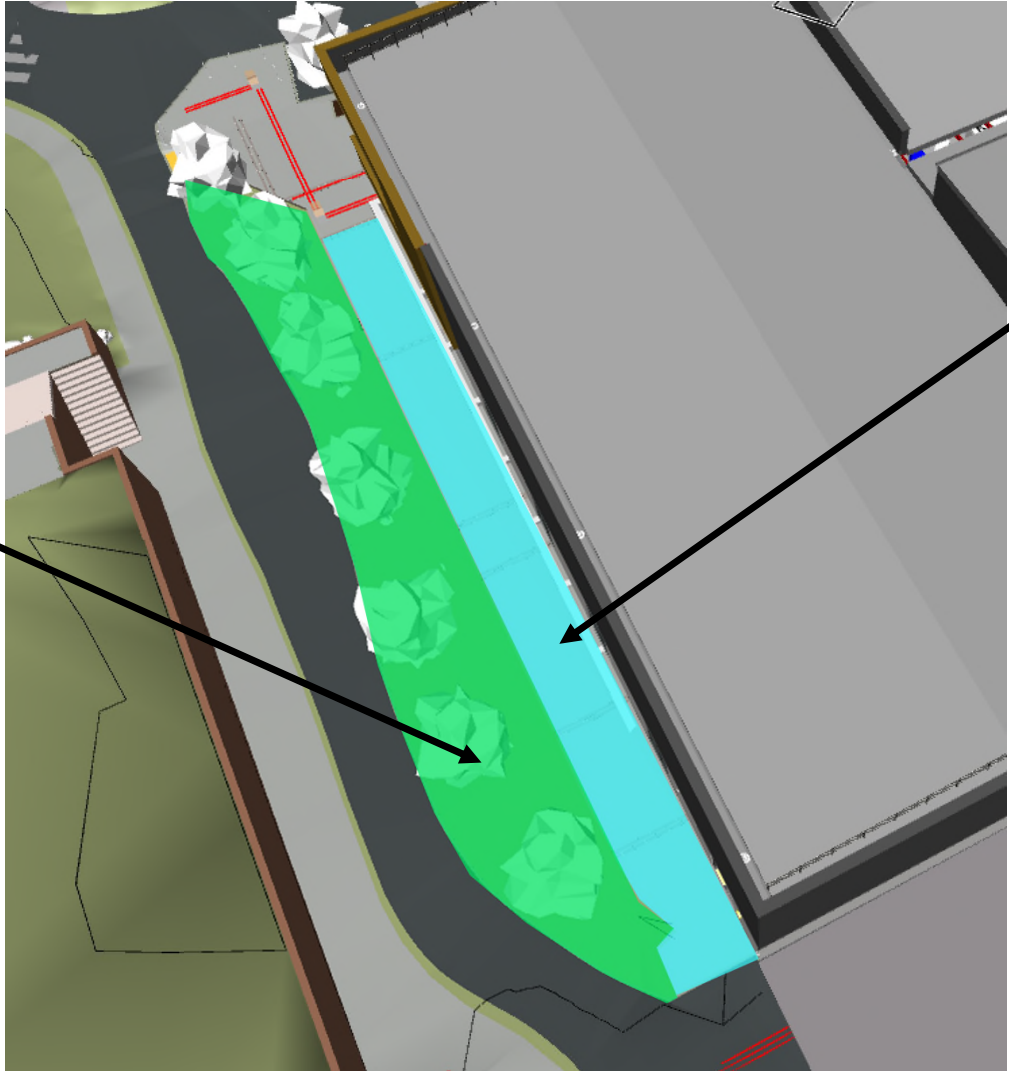


External Works

East Elevation

Soft landscaping

Area to be paved - services underneath to be complete





CONFIDENTIAL, NOT FOR DISTRIBUTION

External Works

South Elevation



Area to be paved – services underneath to be complete



External Works

South Elevation

Area for planters

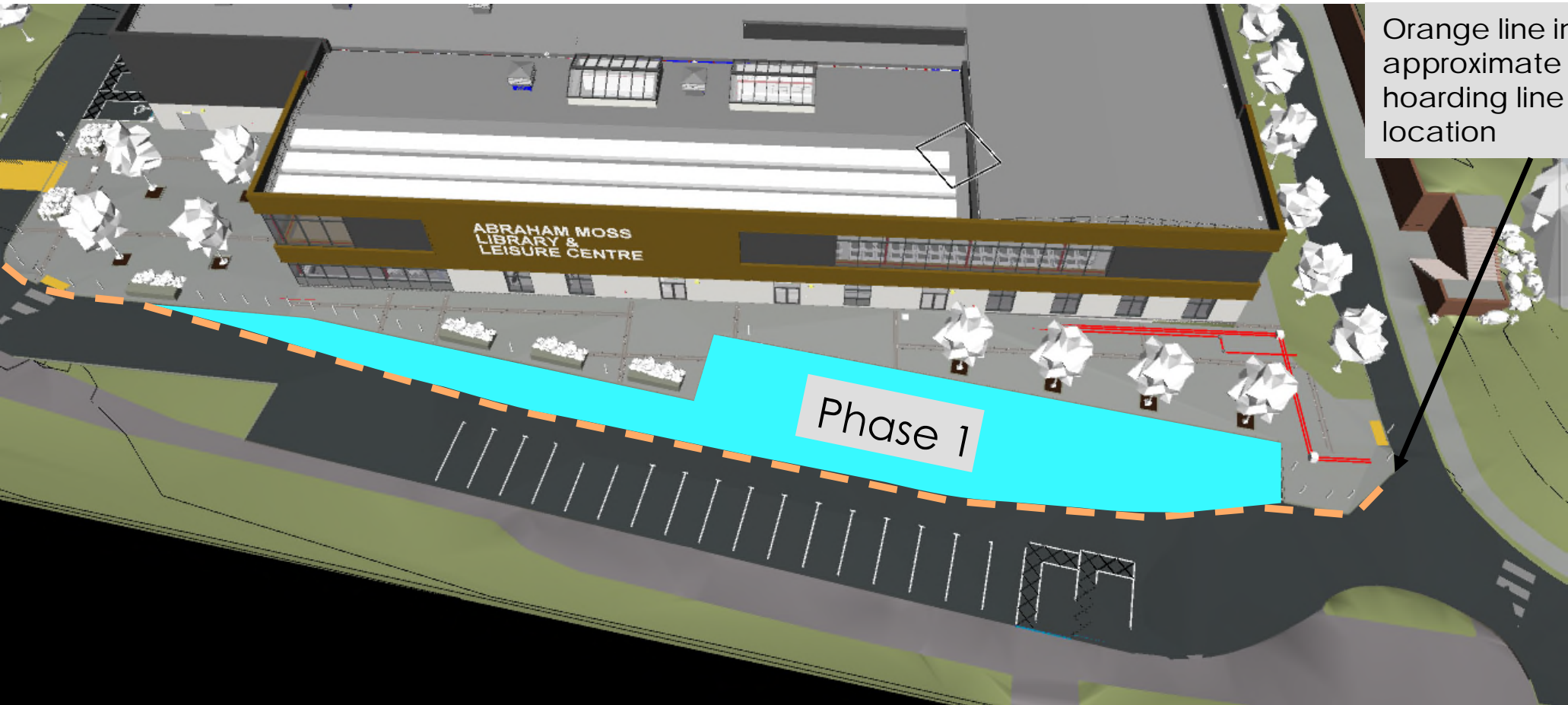


Soft Landscaping -
Rootspace structure
to be installed
underneath prior to
paving



External Works

South Elevation

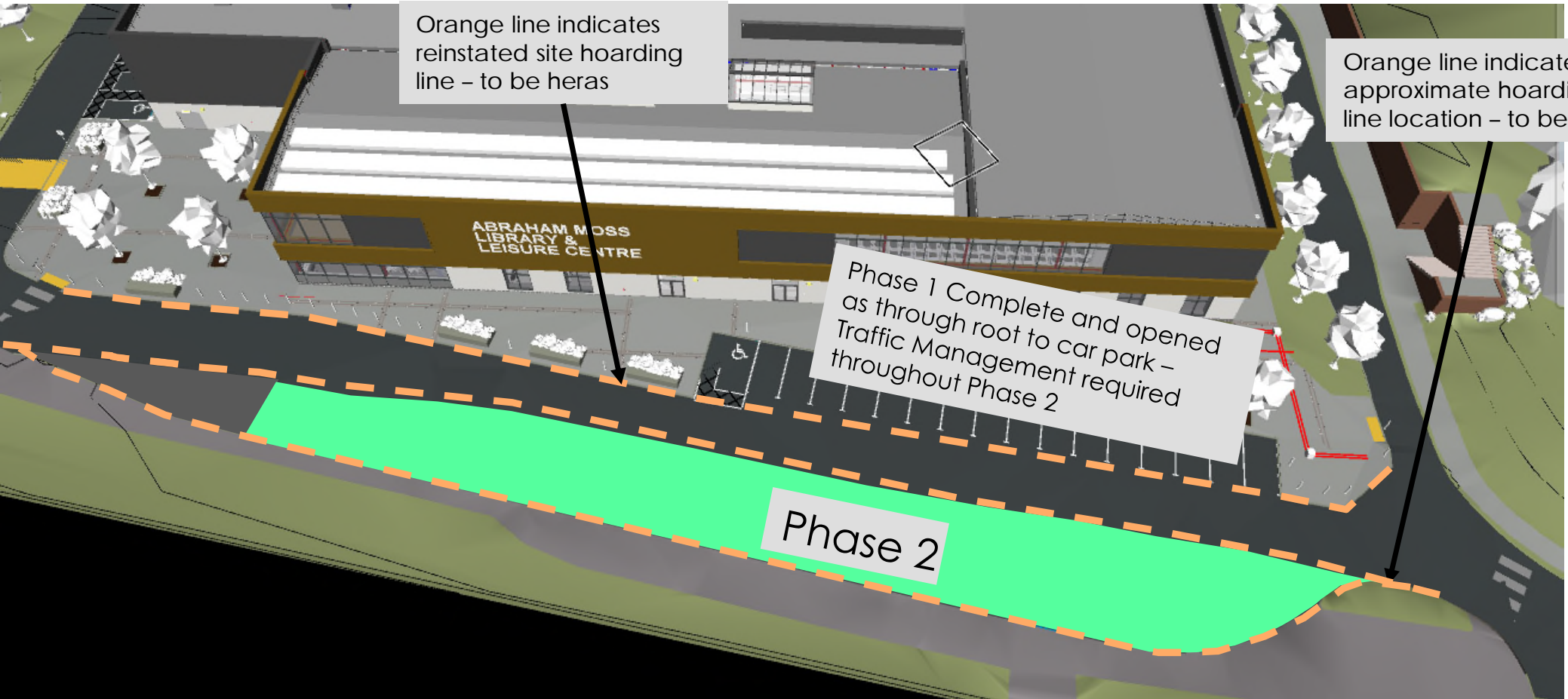


Orange line indicates approximate hoarding line location



External Works

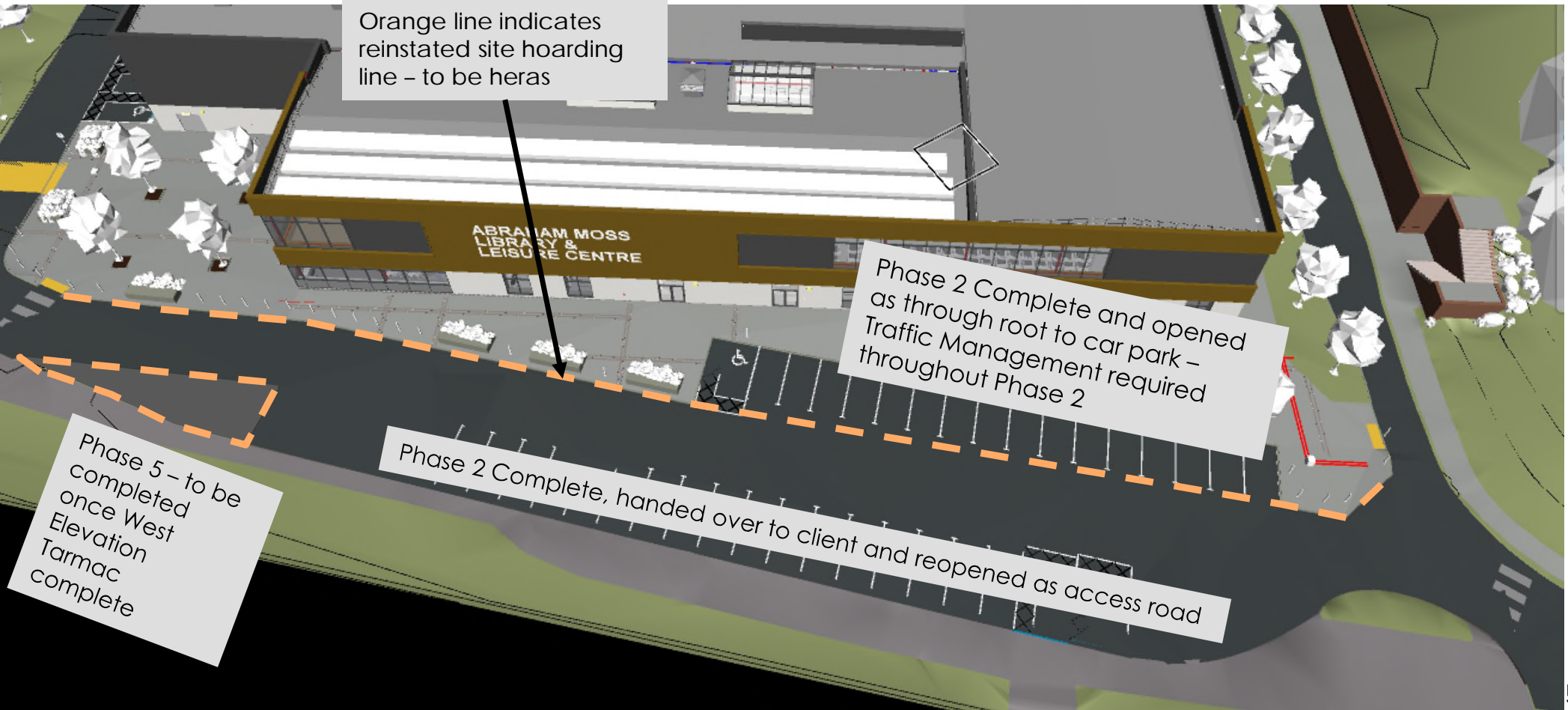
South Elevation





External Works

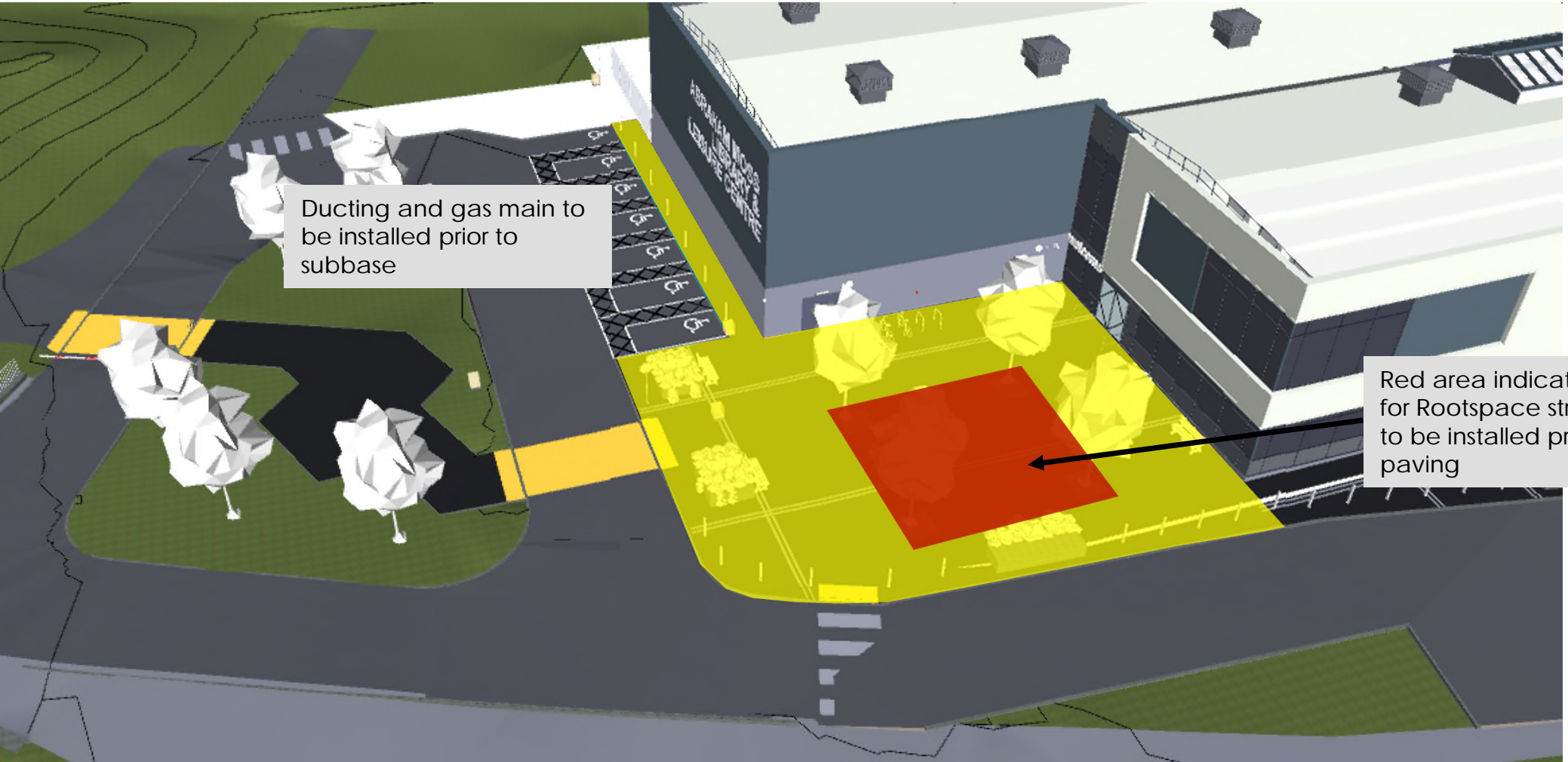
South Elevation





External Works

West Elevation

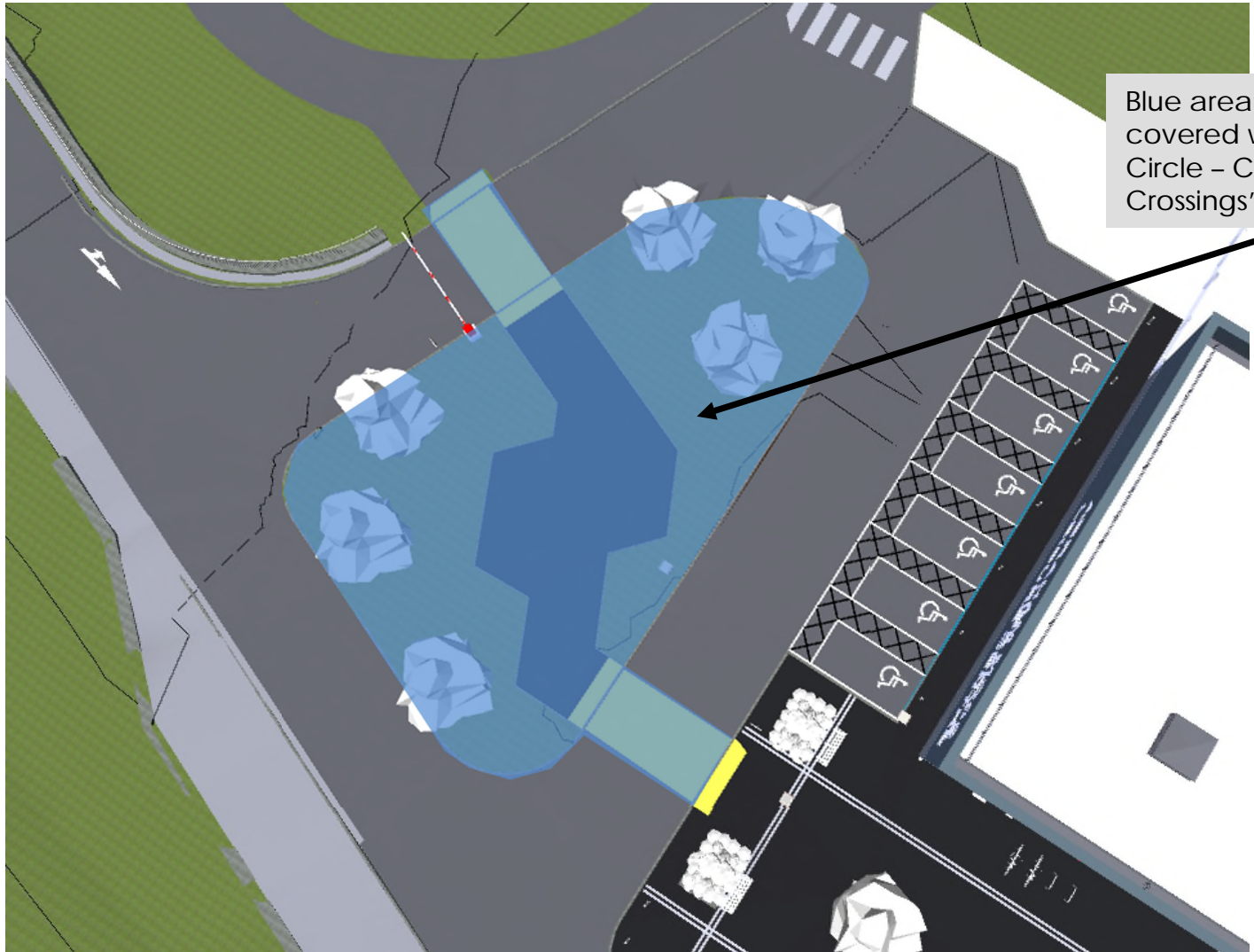




CONFIDENTIAL, NOT FOR DISTRIBUTION

External Works

West Elevation



Blue area indicates area covered within 'Turning Circle - Centre and Crossings' programme

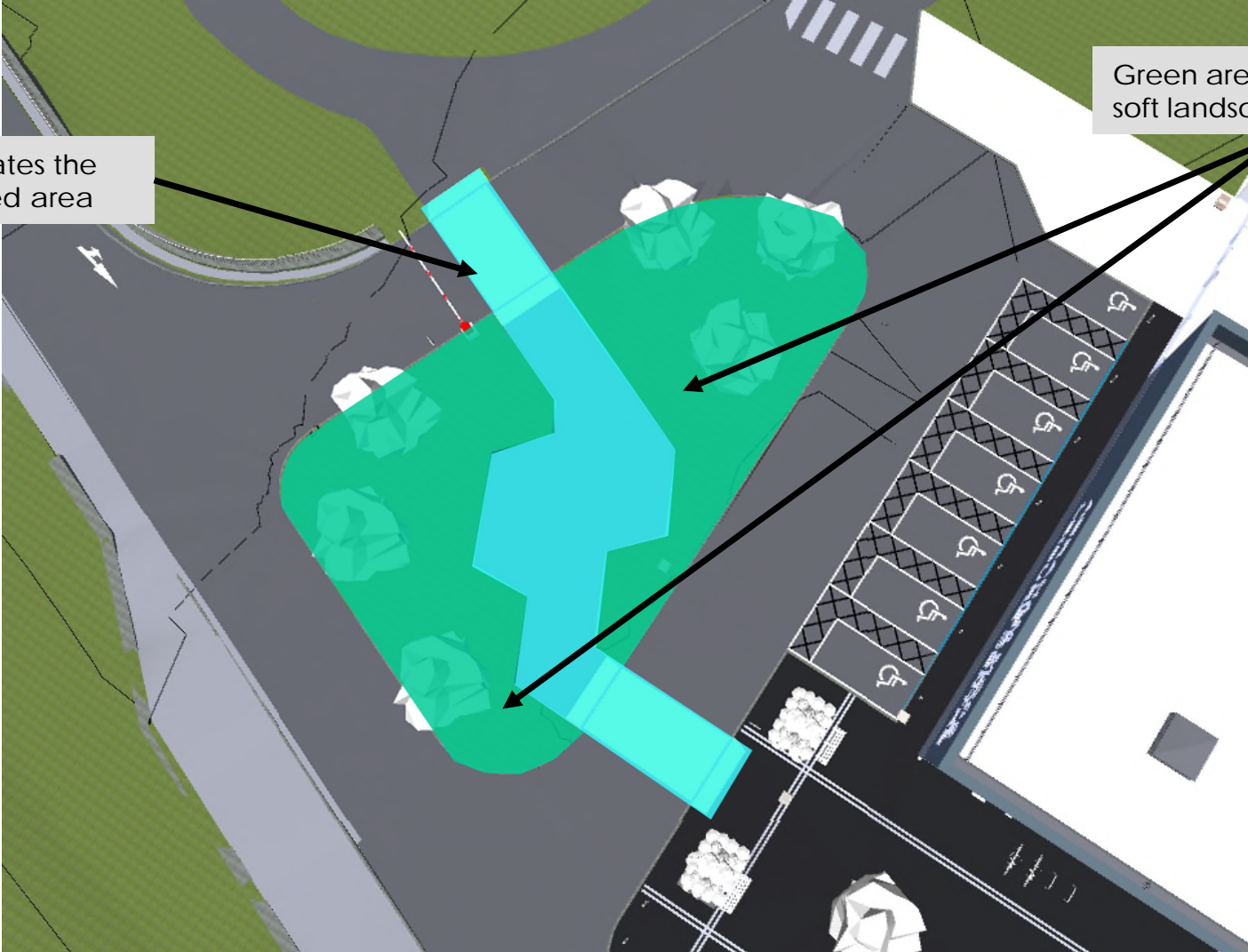


External Works

West Elevation

Blue area indicates the hard landscaped area

Green area indicates the soft landscaping area



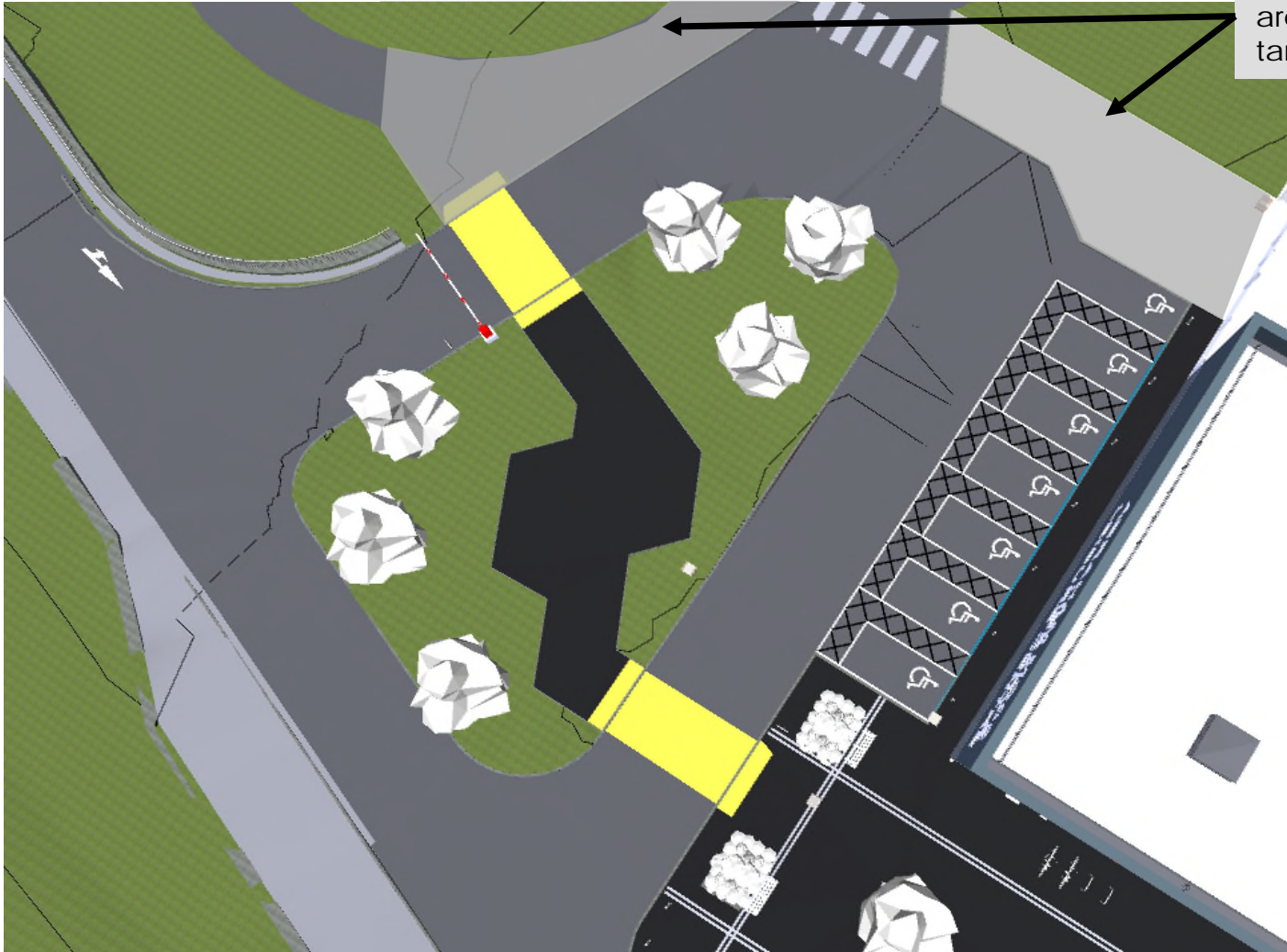


CONFIDENTIAL, NOT FOR DISTRIBUTION

External Works

West Elevation

Grey area indicates the area for pedestrian tarmac

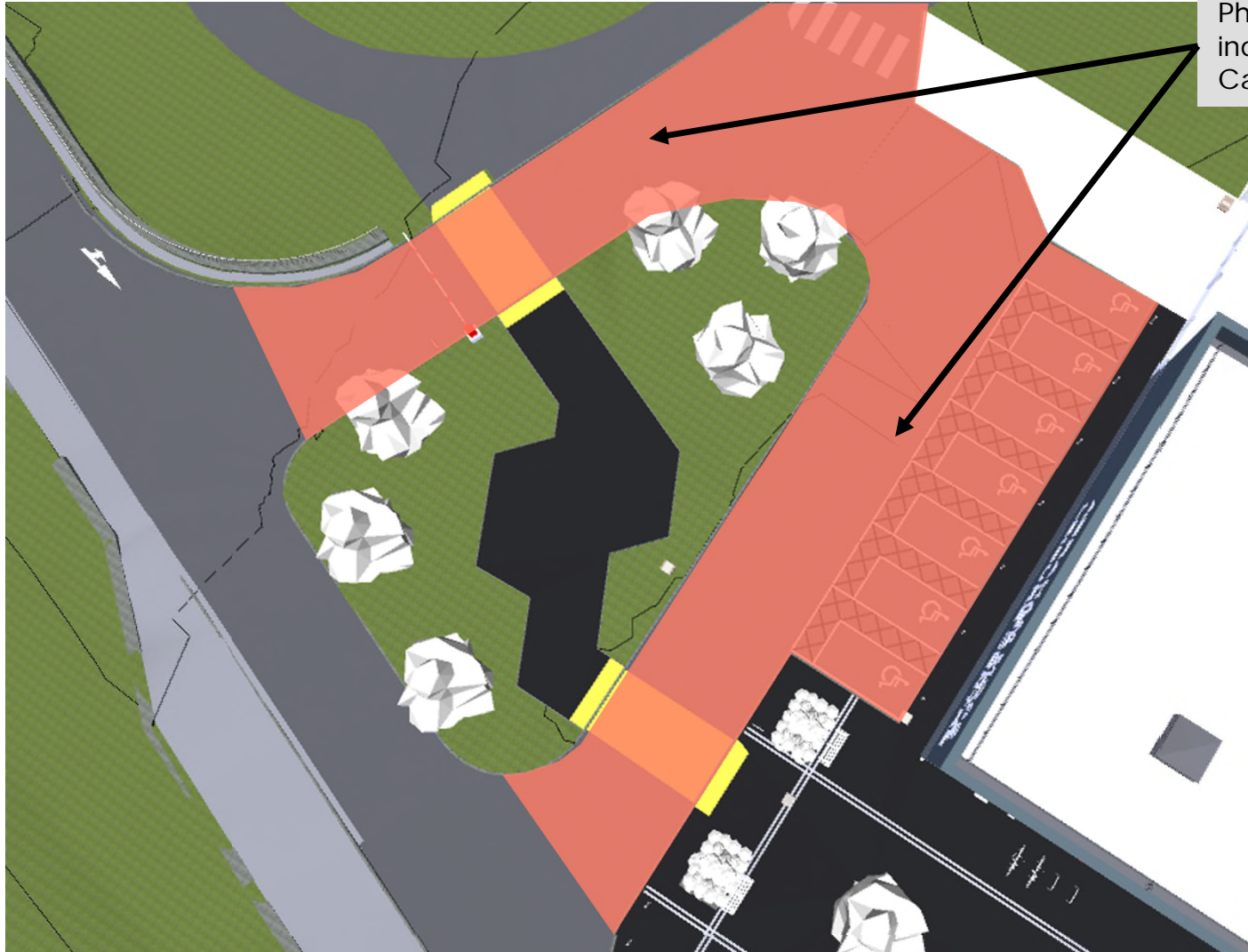




CONFIDENTIAL, NOT FOR DISTRIBUTION

External Works

West Elevation



Phase 3 - Red area indicates the area for Carriageway surface

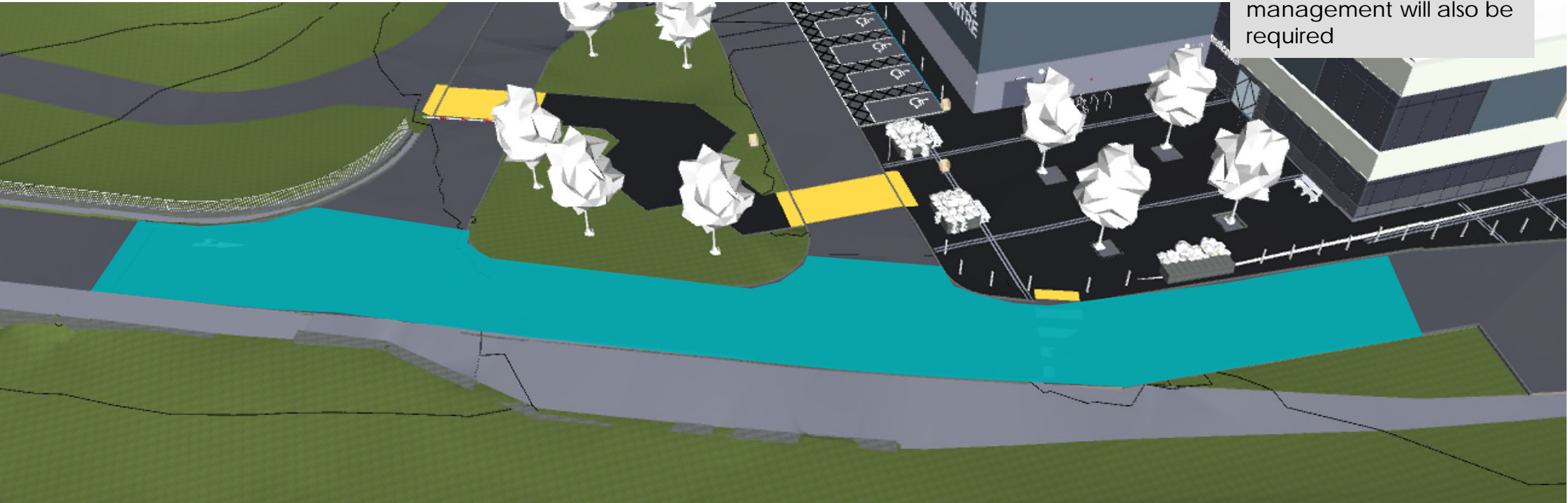


CONFIDENTIAL, NOT FOR DISTRIBUTION

External Works

West Elevation

Phase 4 – Blue area indicates area for resurfacing to be complete as overnight works. Traffic management will also be required





CONFIDENTIAL, NOT FOR DISTRIBUTION

External Works

West Elevation

Phase 5 – Red area indicates area for reinstatement, including pedestrian barriers, kerbs and tarmac.

