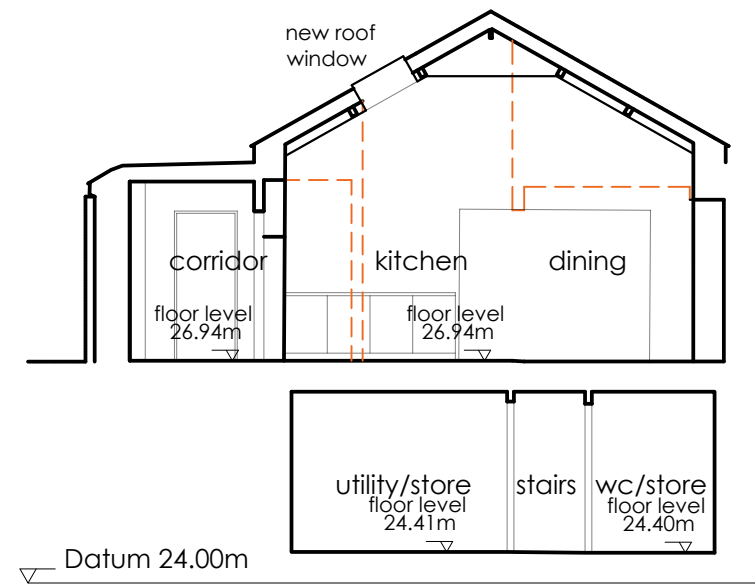
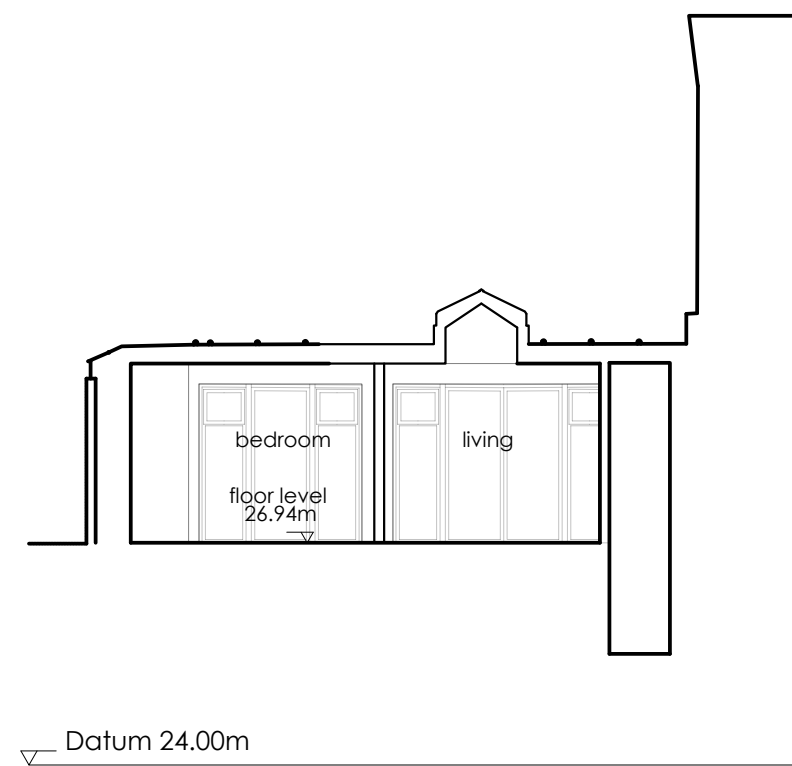


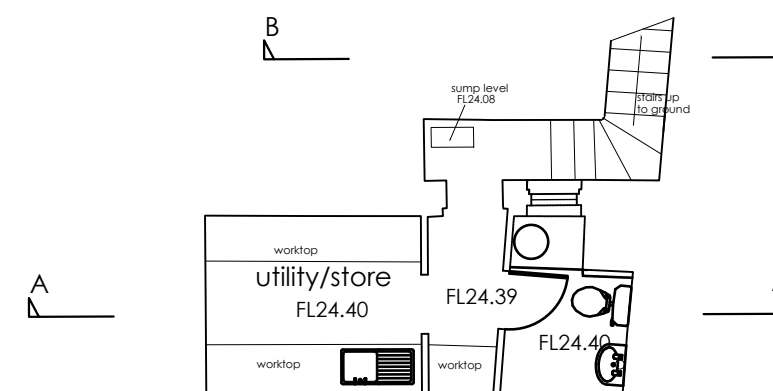
ground floor plan



Section A-A



Section B-B



cellar floor plan

MATERIALS

Grey powder coated aluminium windows and glazed doors

Painted cement and sand render to rear wall

--- Indicates structure to be demolished



L F WEBB & PARTNER

58 Broad Street
Lyme Regis
Dorset DT7 3QF

t 01297 442678

www.lfwebb.co.uk

Project
Rear of Lyme Regis Post Office
(Formerly Penny Black Cafe)

Title
Proposed Floor Plans and Sections

Drawing status:
Planning

Scale 1:100 (@ A2)	Date October 2020
-----------------------	----------------------

Drawing No. 1505.003	Rev.
-------------------------	------

© This drawing must not be reproduced in whole or in part without consent. Written dimensions must be checked on site.