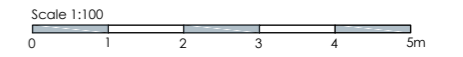




North Elevation



South Elevation



**MATERIALS**

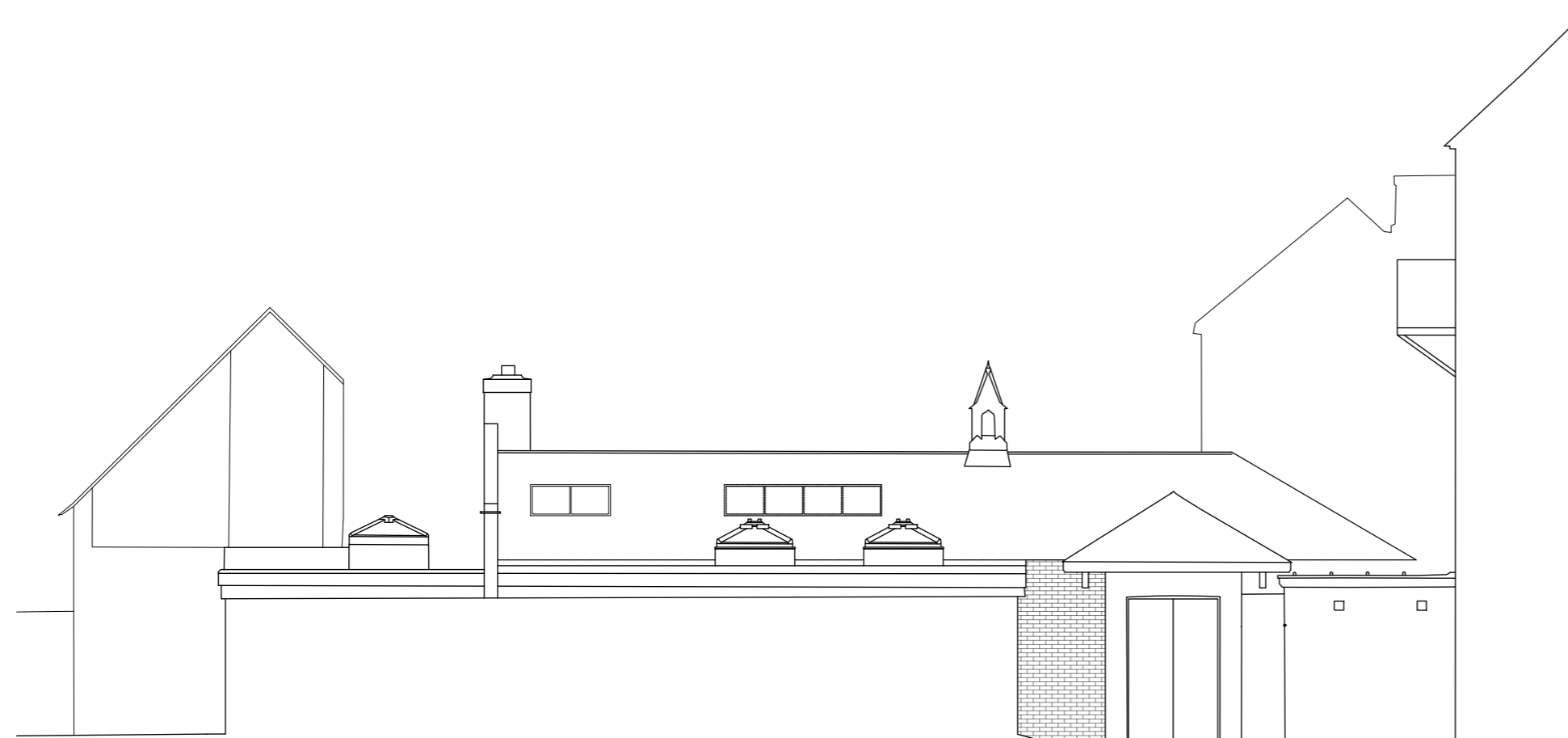
Grey powder coated aluminium windows and glazed doors

Painted cement and sand render to rear wall

--- Indicates structure to be demolished



North Elevation - Courtyard



East Elevation - Courtyard



West Elevation - Courtyard

**L F WEBB & PARTNER**

58 Broad Street  
Lyme Regis  
Dorset DT7 3QF

t 01297 442678

www.lfwebb.co.uk

Project  
Rear of Lyme Regis Post Office  
(Formerly Penny Black Cafe)

Title

Proposed Elevations

Drawing status:

Planning

Scale 1:100 (@ A2)	Date October 2020	
-----------------------	----------------------	--

Drawing No. 1505.004	Rev. A
-------------------------	-----------

© This drawing must not be reproduced in whole or in part without consent.  
Written dimensions must be checked on site.