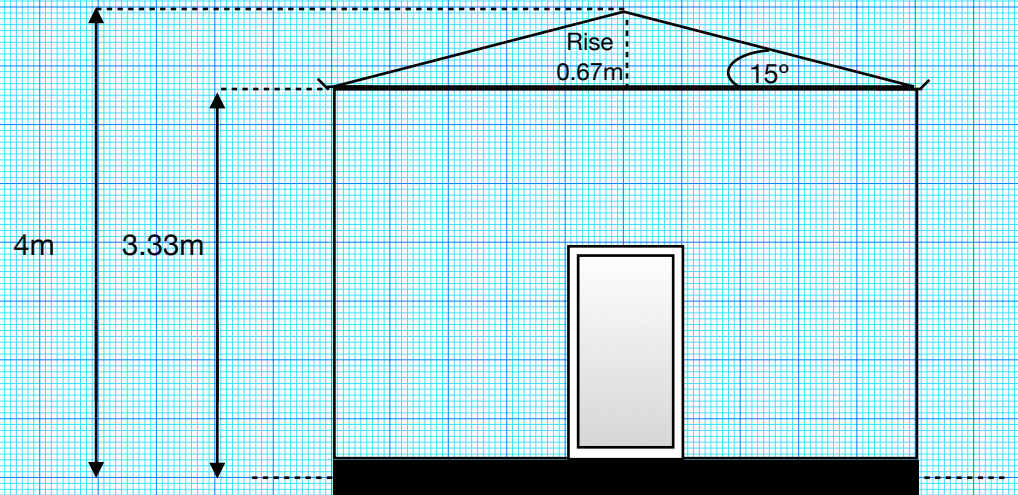
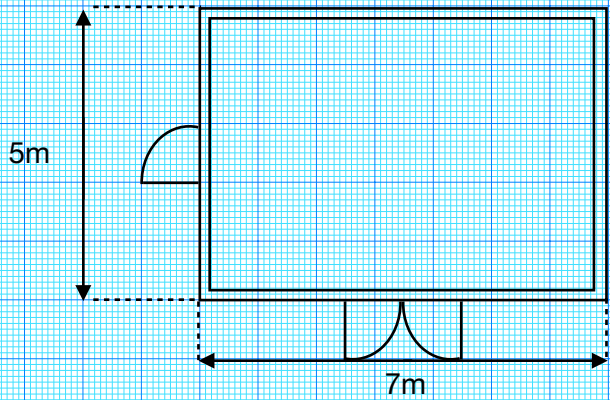


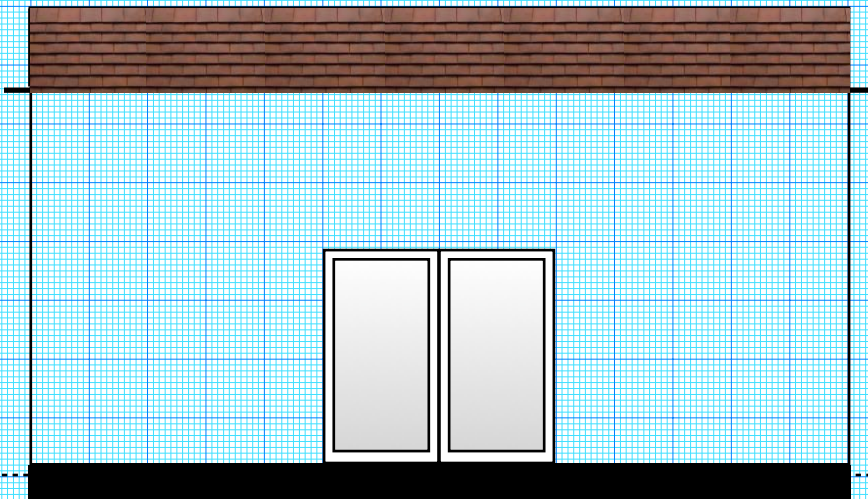
Concrete - Brick Media Room / Office

North West Elevation 1:50

Birds Eye View Ratio 1:100



South West Facing Elevation Ratio 1:50



South West Facing

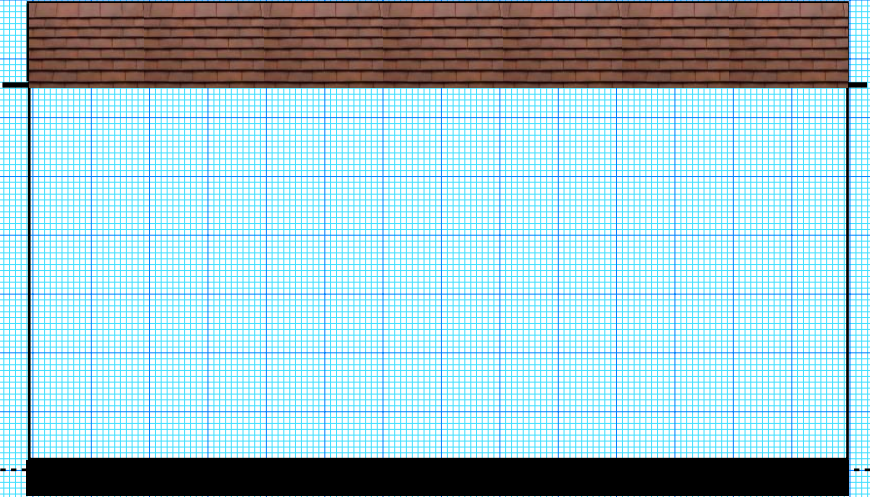


North West Facing

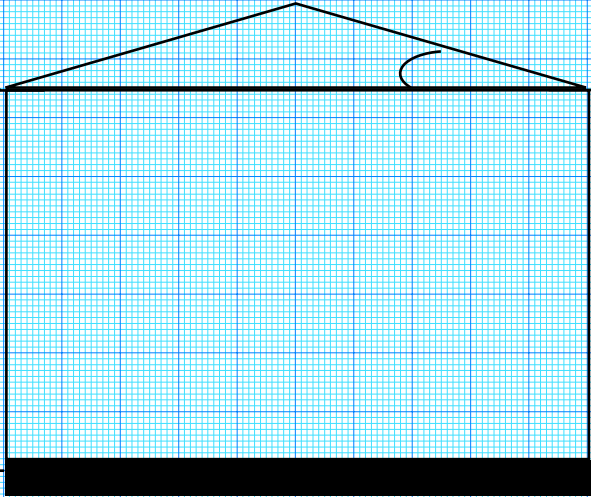


- . 0.15m concrete base above ground level (approximately 6 inches) with approximately 3ft footings under ground level.
- . Brick outer wall - cavity with kingsman insulation - block inner wall.
- . 15° pitch style clay tile roof.
- . White PVCu fascia cladding.
- . 2x standard white 0.91m x 1.82m (3ft x 6ft) full glaze PVCu doors.
- . Black guttering.

North East Facing Elevation Ratio 1:50



North East Elevation 1:50

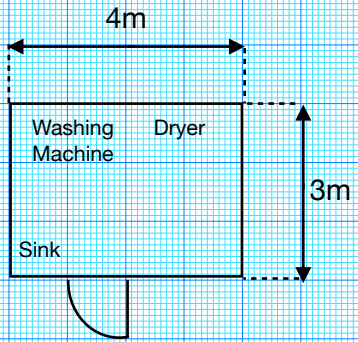


Proposed Birds Eye View Ratio 1:100

Conservatory - Utility Room

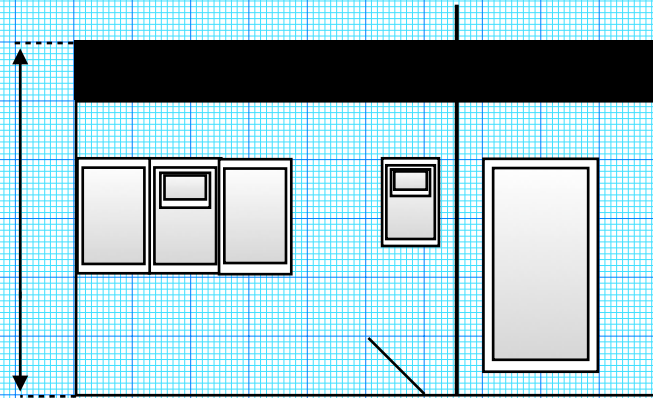
Current North East Elevation 1:50

House

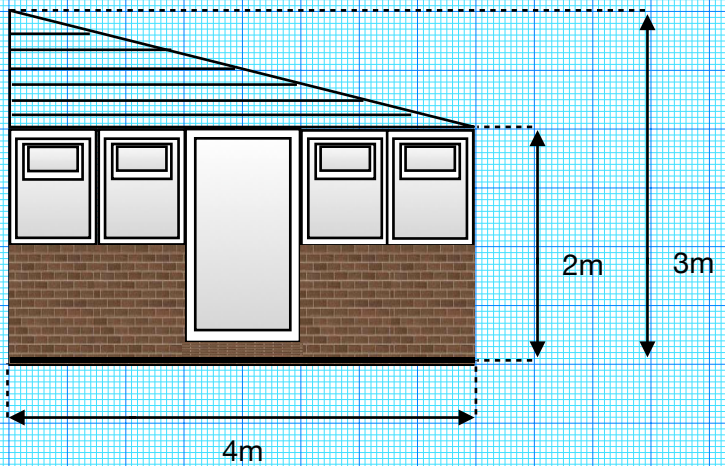


House

3m



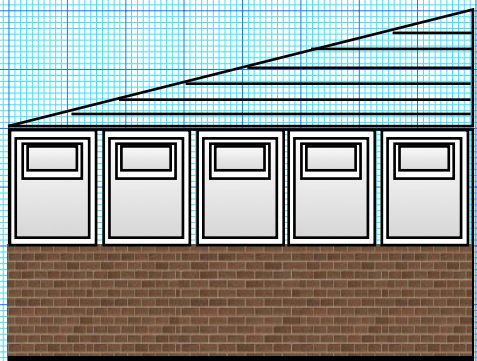
Proposed South East Elevation 1:50



Proposed North East Elevation 1:50



Proposed North West Elevation 1:50



- . 0.15m concrete base (approximately 6 inches).
- . Half brick, half window build (not dwarf walls).
- . Windows bottom glaze top hung.
- . 15° pent pitch style clay tile roof.
- . White PVCu fascia cladding .
- . 1 standard white 0.91m x 1.82m (3ft x 6ft) full glaze PVCu doors.
- . Black guttering. (Guttering will be encased within the room)