

Optio

BSC94 Lift & Slide

For those looking for effortless operation, look no further than our premium lift and slide door. Its vital statistics are impossible to ignore.

Termix U-Values of 1.5W/m²K (triple glazing). Panel weights of up to 400kg. Sightlines as slim as 45mm. The all-glass-on. As do the benefits, providing multiple configurations and a wide choice of colour finishes.



DESIGN FEATURES

- › Accepts 20mm – 31mm double glazing
- › Max 400kg panel weight (double bogey)

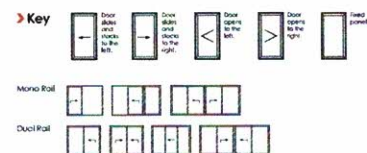
OPTIONS

- › Available as Inline Sliding
- › Slimmer sightline of 45mm available
- › Multiple sliding configurations
- › Mono or Dual rail options
- › Available in single and dual colour
- › Anodised finishes also available
- › Range of hardware and security features

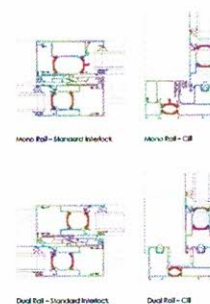
SPECIFICATIONS

Performance and accreditation	BSC94
U-value (double glazing)** (Ug = 1.0W/m ² K) (mono rail)	1.6 W/m ² K
U-value (triple glazing)** (Ug = 0.7W/m ² K) (mono rail)	1.4 W/m ² K
U-value (double glazing)** (Ug = 1.2W/m ² K) (dual rail)	1.7 W/m ² K
U-value (triple glazing)** (Ug = 0.7W/m ² K) (dual rail)	1.5 W/m ² K
Green guide rating	C rated
Acoustic performance (dB)	npd
Air tightness (Pa)**	Class 4 (400 Pa)
Water tightness (Pa)**	Class 7A (300 Pa)
Wind load (Pa)**	C4 (1400 Pa)
Configuration & frame	
Opening	Lift & slide
Mono rail (105mm)	✓
Dual rail (145mm)	✓
Size limits	
Max wind weight***	400kg
Max frame height***	3000mm
System features	
Dual colour option	✓
Anti-pinch locking	✓
Glazing options	Internal
Glazing thickness	20mm – 31mm
Sightlines	100mm

BSC94 (LIFT & SLIDE) CONFIGURATIONS

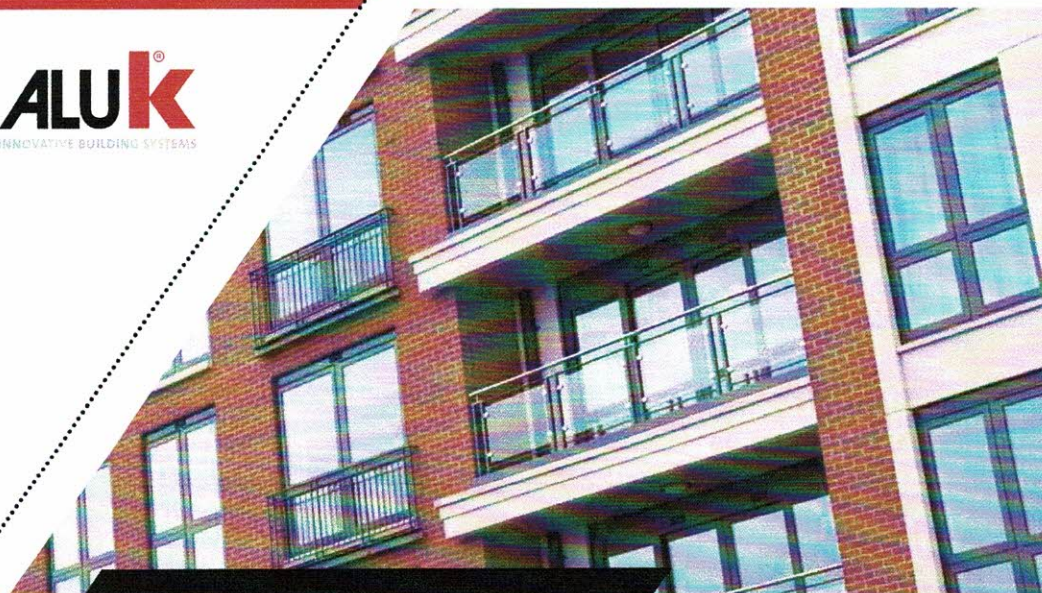


CAD CROSS SECTIONS



*Standard Inset or C8 Inset door (20mm x 31mm)
 **U-value for Mono Rail (105mm) and Dual Rail (145mm) based on higher performance double glazing
 ***Based on weight of 200kg/m² (100kg/m²)
 ****Based on weight of 200kg/m² (100kg/m²)
 *****Based on weight of 200kg/m² (100kg/m²)
 *****Based on weight of 200kg/m² (100kg/m²)
 *****Based on weight of 200kg/m² (100kg/m²)





BSC94 SLIDING DOOR SYSTEM

The BSC94 aluminium sliding door is a multi-configuration In-line system that allows you to specify and design the most suitable solution for your project. The system is available with fixed lights or sliding doors, as well as single, double and triple track options. Outstanding thermal performance and the highest quality fittings ensure reliable and comfortable operation.

DESIGN FEATURES

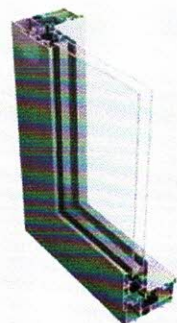
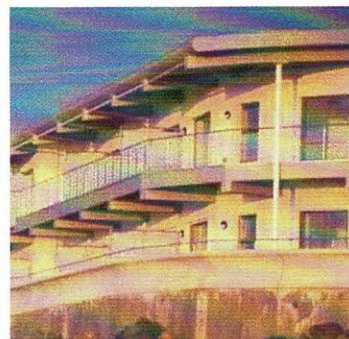
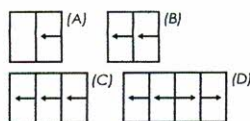
- Three chamber inline slide or lift and slide system
- Up to six sliding configurations
- Available in Single, Double and Triple track options
- Thermally enhanced extrusions incorporating glass fibre reinforced polyamide strips
- Robust and durable design allowing up to 200kg panel weight inline sliding and 400kg in a lift and slide configuration
- Certified under Secured by Design scheme

OPTIONS

- Accepts 20mm - 31mm Double Glazed Units
- Inline or Lift and Slide
- Single, Double or Triple Track options
- Available in single or dual colour option, polyester powder coating and anodised finishes
- Complete range of hardware and security features

CONFIGURATIONS

- (A) One Panel Sliding
- (B) Two Panel Sliding
- (C) Three Panel Sliding
- (D) Four Panel Sliding
- Fixed lights
- Sliding door
- Single, double or triple track



BSC94 SLIDING DOOR SYSTEM TECHNICAL SPECIFICATIONS

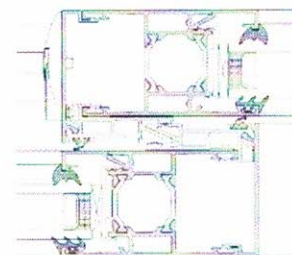
This flexible sliding door system offers specifiers a range of configurations and options to deliver the most suitable solution for your project. In-line and Lift and Slide options, multiple track configurations, an extensive range of hardware and a range

of door styles, colours and finishes provide the flexibility and performance that designers are looking for when specifying entrance solutions. Anodised finishes are also available with marine grade guarantees on request.

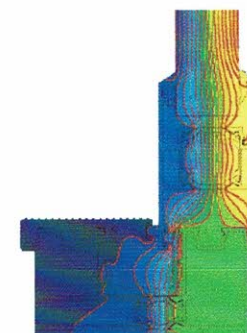
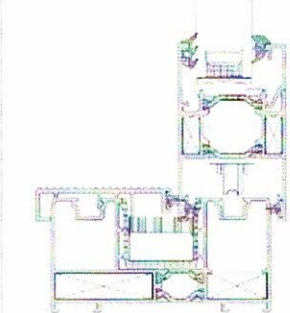
SPECIFICATIONS	INLINE SLIDING	LIFT AND SLIDE
Performance & Accreditation		
U-Value (Double Glazing)*	1.7 W/m ² K	1.8 W/m ² K
U-Value (Triple Glazing)**	1.5 W/m ² K	1.5 W/m ² K
Green Guide Rating	C Rated	C Rated
Acoustic Performance (dB)	Rw (C;Ctr) 36 (-1;-3) dB	Rw (C;Ctr) 36 (-2;-6) dB
Air Tightness (Pa)	Class 4	Class 4
Water Tightness (Pa)	Class 7a	Class 7a
Wind Load (Pa)	C4	C4
Security	EN 1627	EN 1627
Configurations		
Opening	Sliding	Lift and Slide
1 Pane	•	•
2 Pane	•	•
3 Pane	•	•
4 Pane	•	•
Size Limits		
Max Vent Weight	200 Kg	400 Kg
System Features		
Frame Options	94mm	94mm
Dual Colour Option	•	•
Multi-Point Locking	•	•
Glazing Options	Internal	Internal
Glazing Thickness	20mm - 31mm	20mm - 31mm

CAD CROSS SECTIONS AND THERMAL PROFILE

Interlock detail



Cill detail



* U-Values based on CEN size door (2000mm x 2180mm) using 1.2 W/m²K double glazing with warm edge Swisspacer V bar. All weather test data taken from BS EN 6375-1 (Part of Pas 23) based upon highest performing door configuration. Sound insulation values are Rw reduction values and are based on tests using acoustic glazing.

Please note: NBS Specifications are available for all products and BIM Components for many. Please visit www.aluk.co.uk to download CAD files, BIM Components and NBS Specifications.