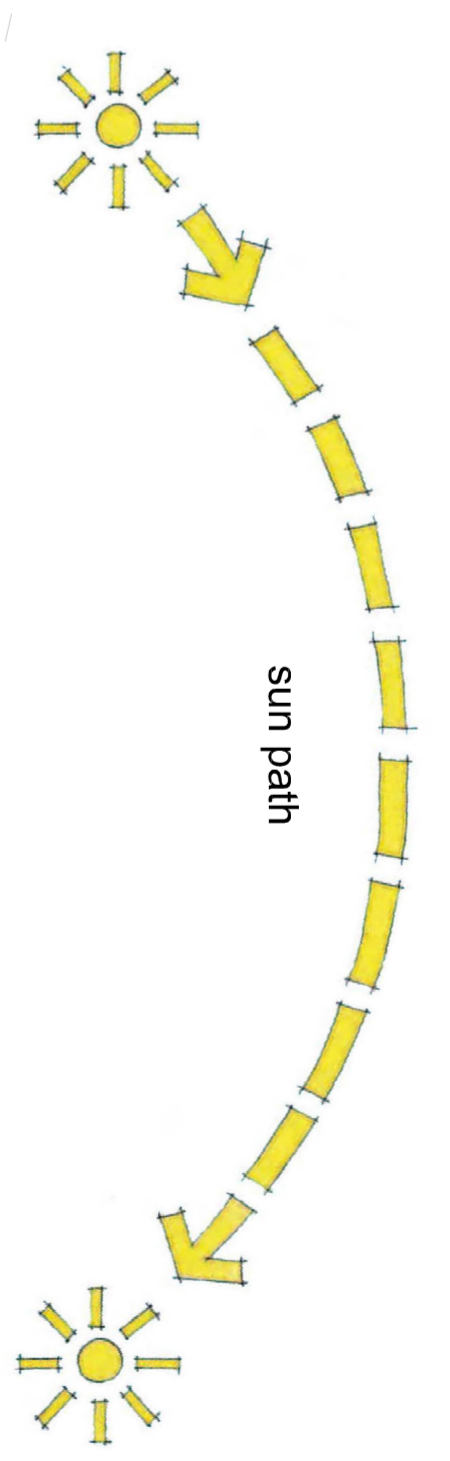
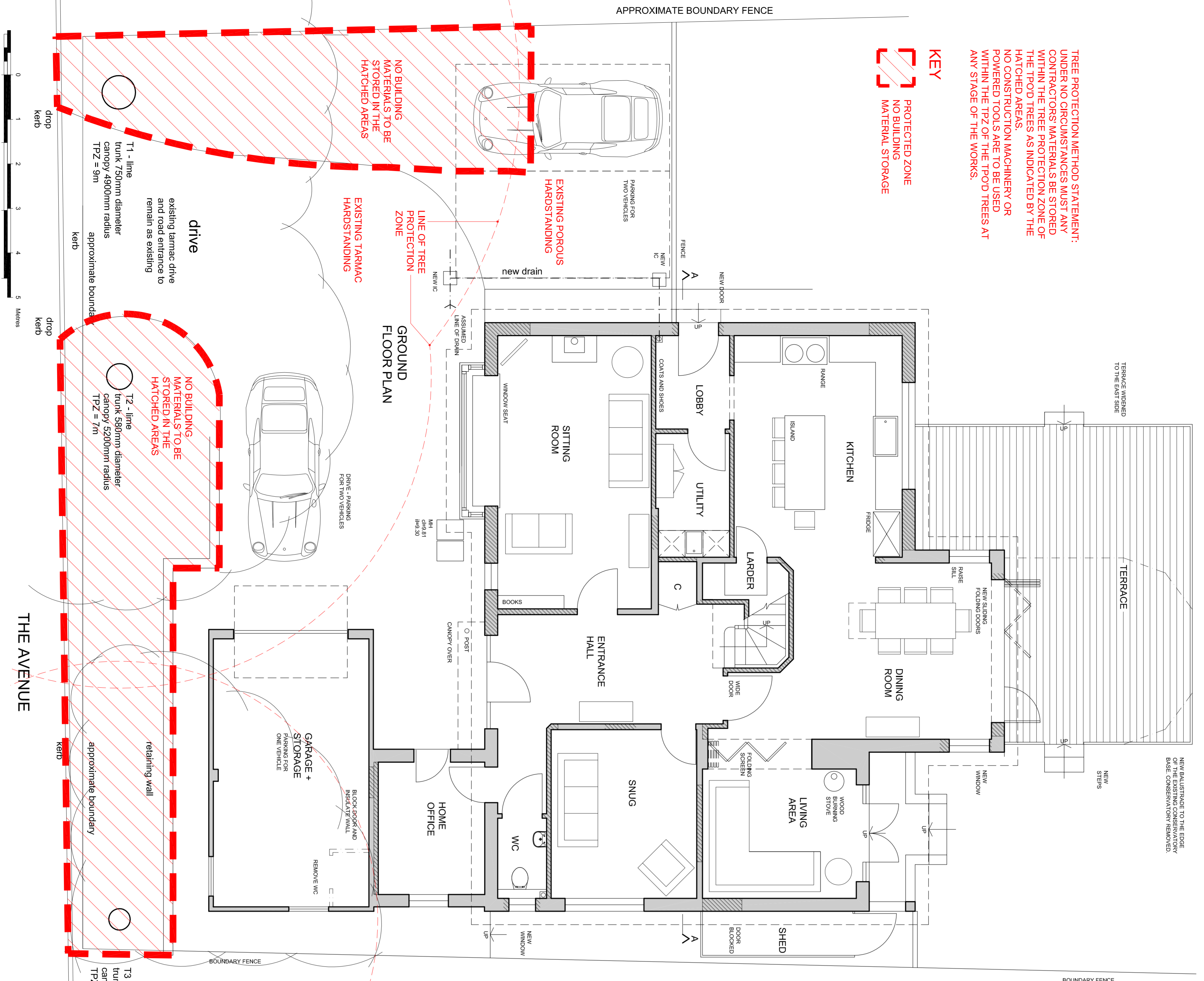
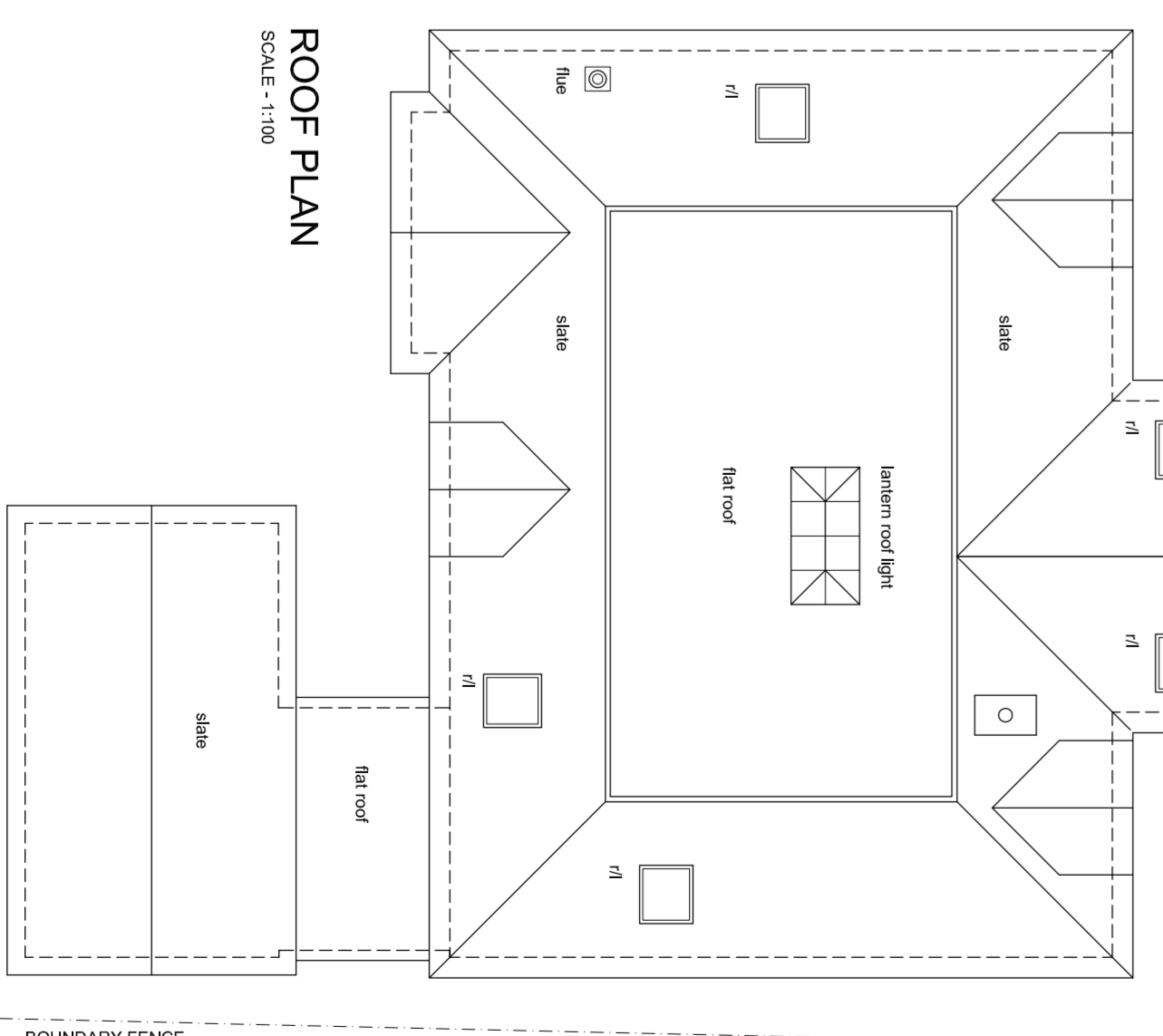
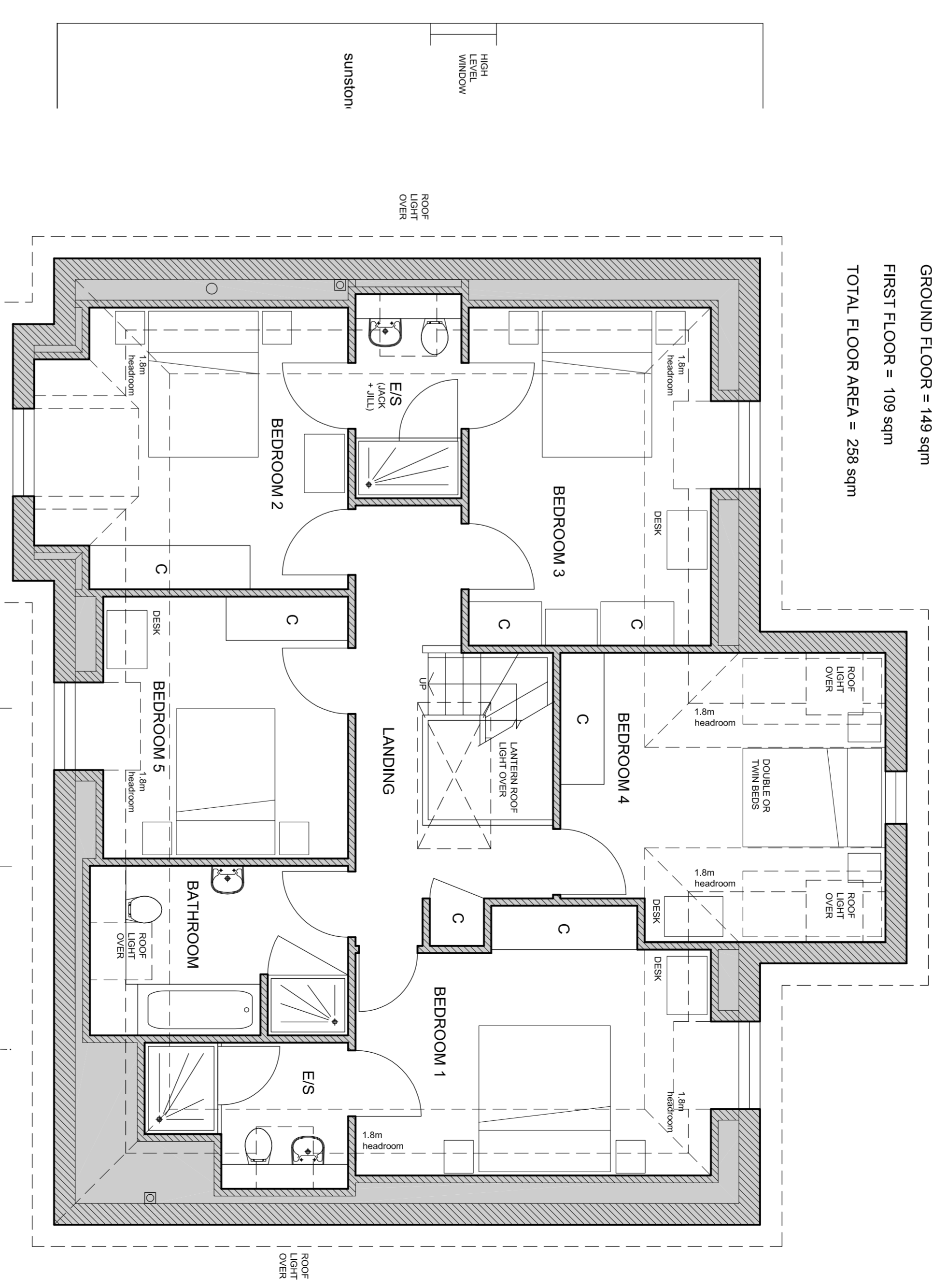


**TREE PROTECTION METHOD STATEMENT:**  
 UNDER NO CIRCUMSTANCES MUST ANY CONTRACTORS MATERIALS BE STORED WITHIN THE TREE PROTECTION ZONE OF THE TPZD TREES AS INDICATED BY THE HATCHED AREAS.  
 NO CONSTRUCTION MACHINERY OR POWERED TOOLS ARE TO BE USED WITHIN THE TPZ OF THE TPZD TREES AT ANY STAGE OF THE WORKS.

**KEY**  
 PROTECTED ZONE  
 NO BUILDING MATERIAL STORAGE



**FLOOR AREAS:**  
 GROUND FLOOR = 149 sqm  
 FIRST FLOOR = 109 sqm  
 TOTAL FLOOR AREA = 258 sqm



©SUNSTONE DESIGN  
 THIS DRAWING IS FOR PLANNING PURPOSES ONLY. DO NOT CONSTRUCT FROM THIS DRAWING.