

ECB GUIDANCE for Player Facilities

Changing Room Finishes:

Floor Finish - Spike resistant homogenous sheet or carpet.
Wall Finish - Painted brick, block-work or plaster. Alternative homogenous hygienic sheet.
Ceiling Finish - Painted plaster. Suspended ceilings with modular tiles are not recommended for ceiling heights lower than 2.7m. If used, tiles must be humidity resistant.
Skirting - Optional

Shower and Drying Area Finishes:

Floor Finish - Sheet safety flooring with welded joints or non-slip floor tiles, laid to fall towards the floor drain.
Wall Finish - Homogenous waterproof sheet or ceramic tiles.
Ceiling Finish - Painted plaster. Suspended ceilings with modular tiles are not recommended for ceiling heights lower than 2.7m. If used, tiles must be humidity resistant.
Skirting - Coved skirting forming a waterproof joint between floor and wall.

Toilet Finishes:

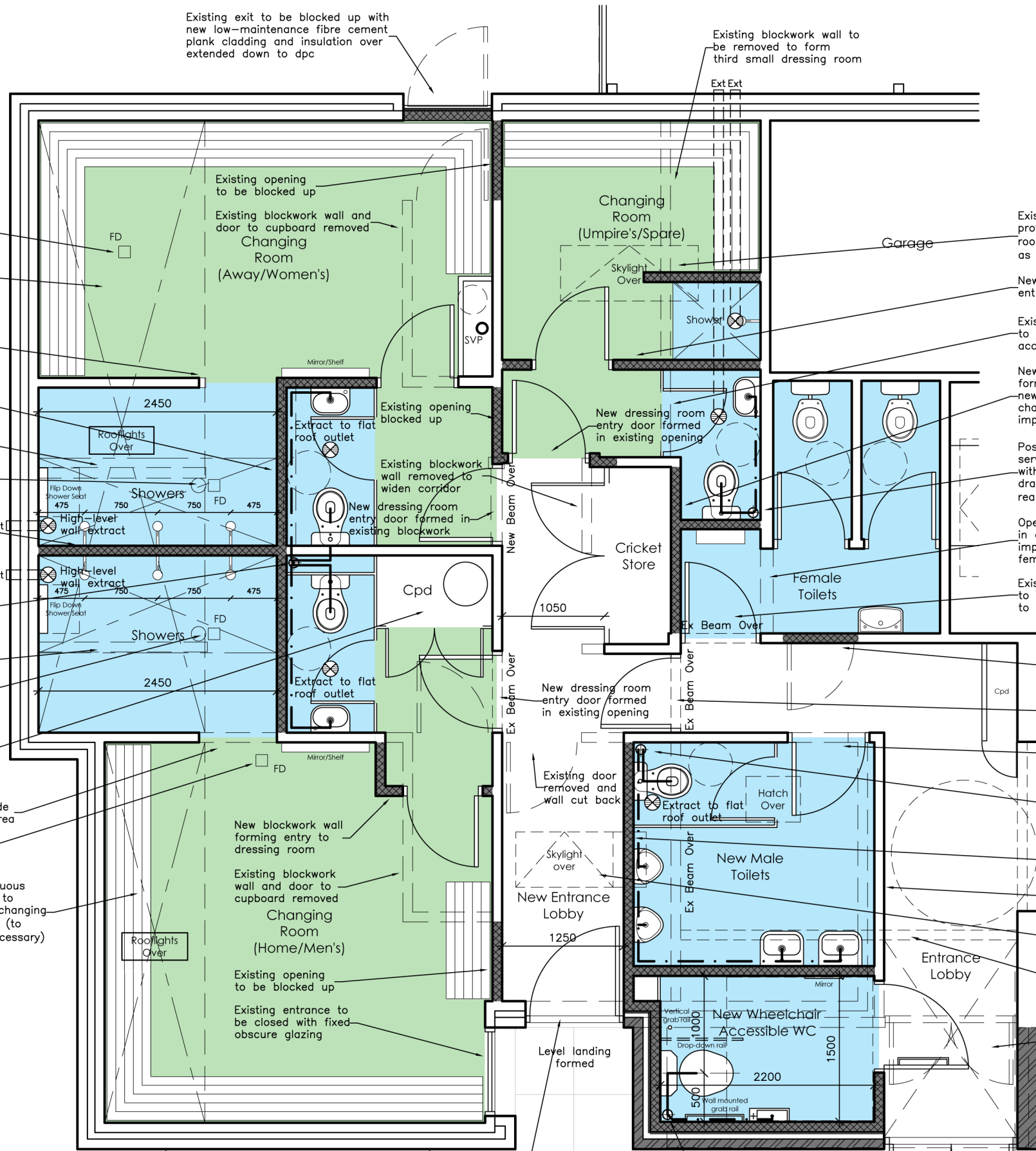
Floor Finish - Sheet safety flooring with welded joints, preferably spike resistant.
Wall Finish - Minimum requirement is painted brick or block-work with tiled splash-back over washbasins and behind urinals. Preferred finish is if funds are available is homogenous waterproof sheet or ceramic tiles.
Ceiling Finish - Painted plaster. Suspended ceilings with modular tiles are not recommended for ceiling heights lower than 2.7m. If used, tiles must be humidity resistant.
Skirting - Coved skirting forming a waterproof joint between floor and wall. Concealed pipes and WC cisterns are preferred if funds are available.

Circulation Finishes:

Floor Finish - Spike resistant homogenous sheet or carpet in areas expected to be used by players.
Wall Finish - Painted brick, block-work or plaster.
Ceiling Finish - Painted plaster. Suspended ceilings with modular tiles are not recommended for ceiling heights lower than 2.7m.
Skirting - Optional

Existing floor drain to be stopped up
Existing high-level continuous rooflights to be retained to provide light throughout changing rooms and shower areas (to replaced/upgraded as necessary)
Existing opening slightly widened to provide access to new shower area
Existing blockwork wall removed and realigned as dimensioned to allow accommodation shown
Existing blockwork wall removed to form new shower area
Existing floor drains to be utilised for shower drainage
New blockwork dividing wall to form separation between adjoining shower areas in line with existing
Possible new SVP location to serve new dressing room toilets with connection to existing drainage system out to the rear of the building (TBC)
Existing blockwork wall removed to form new shower area
Existing floor drains to be utilised for shower drainage
Existing hot water system location retained and enclosed within new cleaning supplies cupboard (system renewed/upgraded as necessary)

Opening formed to provide access to new shower area
Existing floor drain to be stopped up
Existing high-level continuous rooflights to be retained to provide light throughout changing rooms and shower areas (to replaced/upgraded as necessary)



Re-Design of Changing Rooms
Layout Rationalised to form Two Main Changing Rooms and Small Third Changing Room to Increase Flexible Use of Clubhouse

