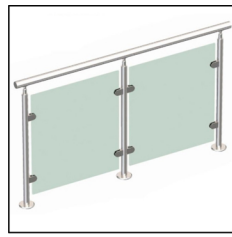


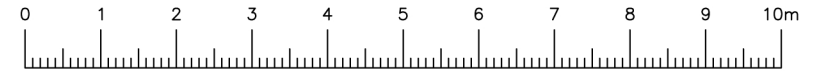
PROPOSED CLADDING:
HardiePlank - Cedar
Arctic White



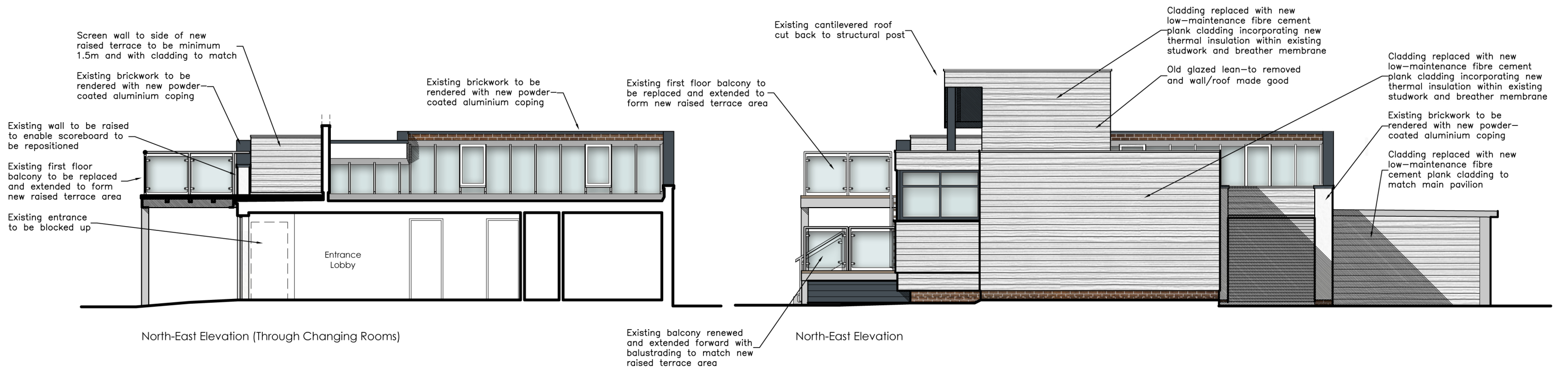
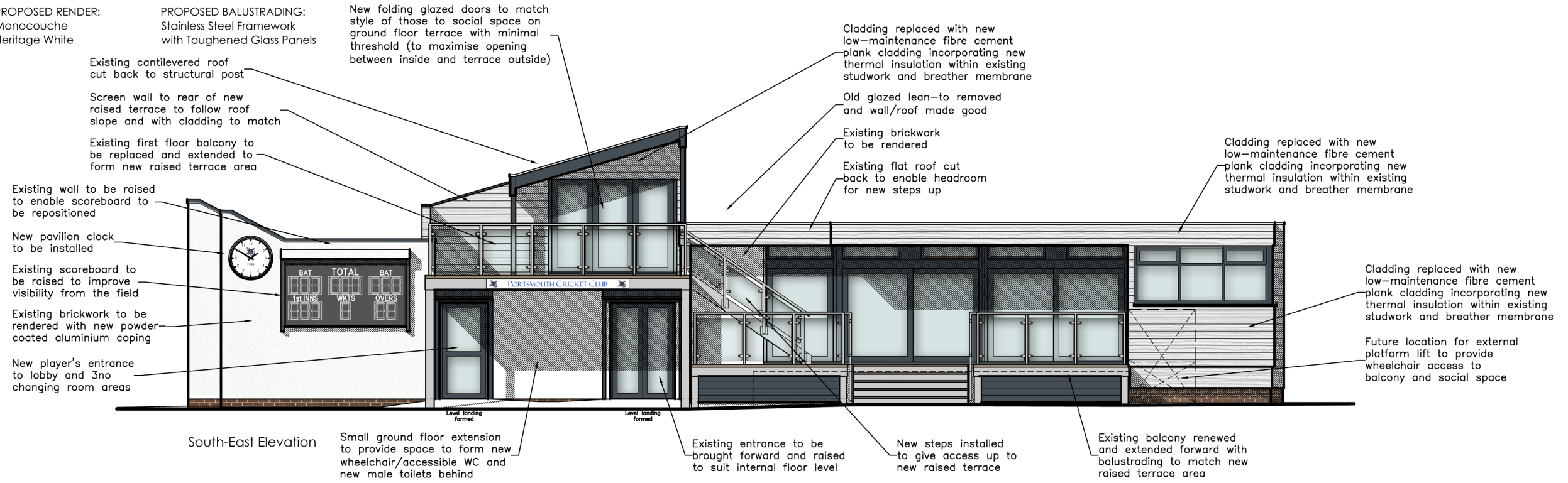
PROPOSED RENDER:
Monocouche
Heritage White



PROPOSED BALUSTRADING:
Stainless Steel Framework
with Toughened Glass Panels



LINEAR SCALE 1:100



Proposed Elevations

(Incorporating New Cladding, Rendered Facades and Stainless Steel Balustrading with Glass Panels)

