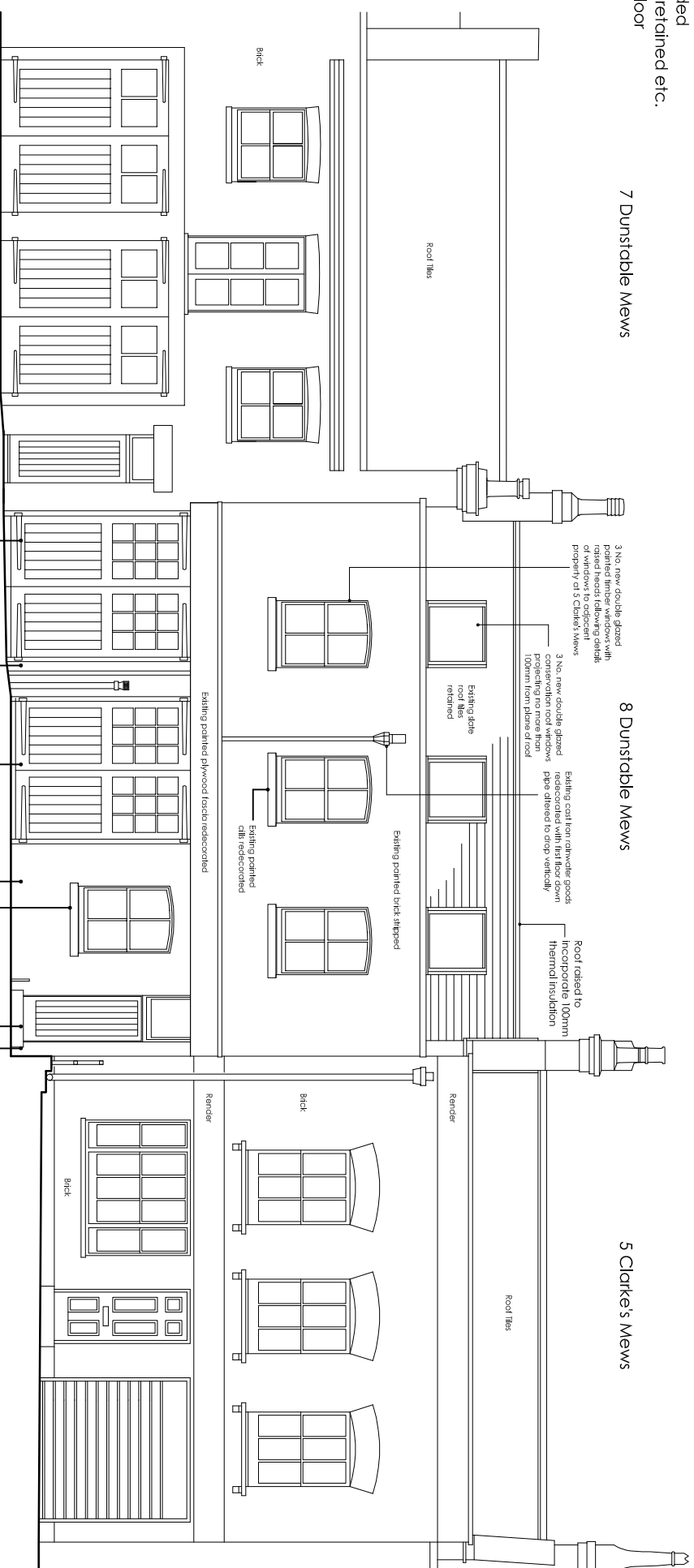


Rev B 07/01/18 Roof raised to incorporate insulation
 Rev C 15/04/18 Windows specification added
 Rev D 28/05/18 Front door & garage door retained etc.
 Rev E 28/05/18 New window dims. as first floor

7 Dunstable Mews



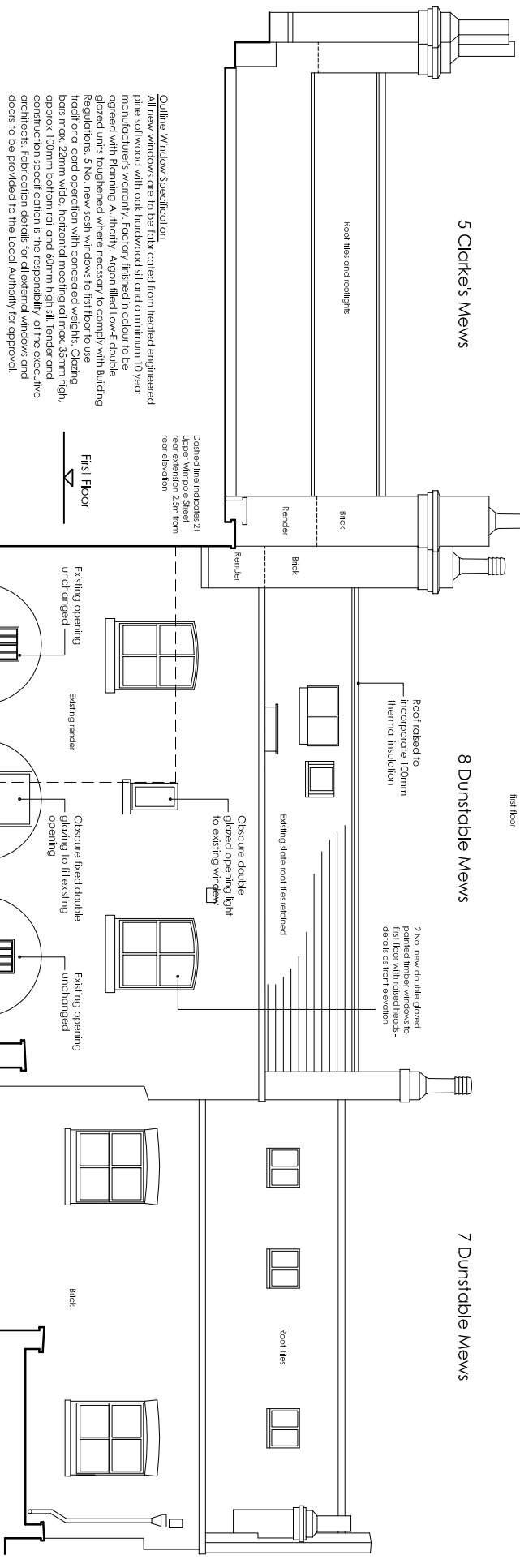
5 Clarke's Mews

Front Elevation

5 Clarke's Mews

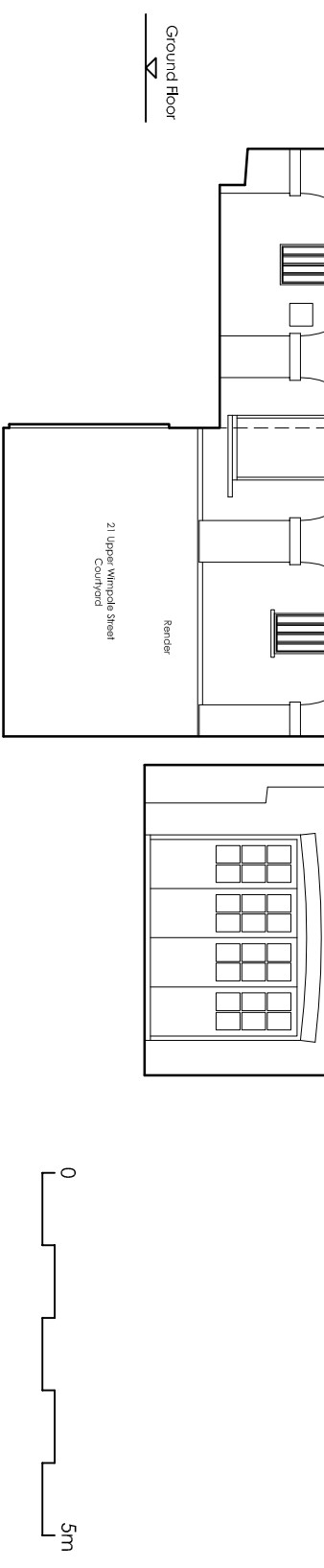
8 Dunstable Mews

7 Dunstable Mews



Outline Window Specification.
 All new windows are to be fabricated from treated engineered pine sash wood with oak handwood sash and oak frame. The windows are to be double glazed with toughened safety glass. The windows are to be opened with Planning Authority Approved Low-E double glazed units. Toughened where necessary to comply with Building Regulations. 5 No. new sash windows to first floor to use traditional cord operation with concealed weights. Glazing bars max. 22mm wide, horizontal meeting rail max. 35mm high approx. 100mm bottom rail and 60mm high sill. Tender and construction specification is the responsibility of the executive architect; fabrication details for all external windows and doors to be provided to the Local Authority for approval.

Rear Elevation



8 Dunstable Mews, Marylebone W1G 6BT 043/005E Proposed Alterations Elevations 1:100 @ A3

Flannery & de la Pole, 149 Darley Green Road, Knowle, Solihull. B93 8PU