

BDP SHALL HAVE NO RESPONSIBILITY FOR ANY USE MADE OF THIS DOCUMENT OTHER THAN FOR THAT WHICH IT WAS PREPARED AND ISSUED.
 ALL DIMENSIONS SHOULD BE CHECKED ON SITE.
 DO NOT SCALE FROM THIS DRAWING.
 ANY DRAWING ERRORS OR OMISSIONS SHOULD BE BROUGHT TO THE ATTENTION OF BUILDING DESIGN PARTNERSHIP AT THE ADDRESS SHOWN BELOW.

NOTES

- LIGHTING LAYOUTS SHALL BE READ IN CONJUNCTION WITH:
 PHNX-BDP-ZZ-XX-SH-YL-70-80-0001 LUMINAIRE SCHEDULE;
 PHNX-BDP-ZZ-XX-SH-YL-70-80-0002 LIGHTING CONTROL SCHEDULE;
 PHNX-BDP-ZZ-XX-SP-YL-70-80-0001 LIGHTING SPECIFICATION;
 NOTIONAL LIGHTING DETAIL DRAWINGS;
 THE PROJECT CDM RISK REGISTER;
 ARCHITECTS' AND OTHER DISCIPLINES' INFORMATION.
- FOR EXTERIOR LIGHTING PLAN DRAWINGS, PLEASE REFER TO:
 PHNX-BDP-ZZ-XX-DR-LG-70-80-3001;
 PHNX-BDP-ZZ-XX-DR-LG-70-80-3002;
 PHNX-BDP-ZZ-XX-DR-00-70-80-3001;
 PHNX-BDP-ZZ-XX-DR-00-70-80-3002;
 PHNX-BDP-ZZ-XX-DR-01-70-80-3001;
 PHNX-BDP-ZZ-XX-DR-02-70-80-3001;
 PHNX-BDP-ZZ-XX-DR-03-70-80-3001;
 PHNX-BDP-ZZ-XX-DR-04-70-80-3001;
 PHNX-BDP-ZZ-XX-DR-05-70-80-3001.
- FIXINGS INTO ANY MATERIAL WHICH IS DIFFICULT TO REPAIR, IN LOCATIONS WHERE FIXING HALLS MAY BE SEEN SHALL BE AVOIDED. THIS PARTICULARLY REFERS TO STONE AND BRICK, ALTHOUGH WIDE MORTAR JOINTS, SUCH AS IN BRICKWORK, CAN ACCOMMODATE SMALL FIXINGS. STUCCO CAN ACCOMMODATE FIXINGS AS IT CAN BE REPAIRED.
- RUNNING CABLES OR POSITIONING CONTROL GEAR IN LOCATIONS WHERE THEY WOULD BE VISIBLE SHALL BE AVOIDED. WHERE EVERY EFFORT SHALL BE MADE TO ENSURE THAT CABLES/ CONTROL GEAR/ FITTINGS ARE POSITIONED IN HIDDEN LOCATIONS, WHERE THEY ARE MORE VISIBLE, THEY WILL BE FINISHED IN A COLOUR TO MATCH THEIR SURROUNDINGS. TO REDUCE VISUAL IMPACT, SUITABLE RAL COLOUR SHOULD BE RECOMMENDED BY THE HERITAGE CONSULTANT.
- EXISTING HORIZONTAL CORNICING ELEMENTS ON THE FACADE GENERALLY HAVE SURFACES WHERE CABLE RUNS MAY BE DISCREETLY LOCATED, HIDDEN IN VIEWS FROM GROUND LEVEL, WHERE CABLES HAVE TO RUN VERTICALLY THE CONTRACTOR MUST ENSURE THAT THEY ARE TUCKED INTO RECESSES, IN CORNERS, OR BEHIND/ ADJACENT TO OTHER EXISTING VERTICAL ELEMENTS, SUCH AS RAIN WATER PIPES.
- REMOTE DRIVER LOCATIONS SHALL BE CONFIRMED BY THE ELECTRICAL ENGINEER. DRIVERS SHALL BE HOUSED IN AN ACCESSIBLE LOCATION WITH A DEGREE OF VENTILATION. ADVANTAGE SHOULD BE TAKEN OF BASEMENT AREAS, WHERE LIGHTING EQUIPMENT CAN BE LOCATED IN PLACES WHICH ARE NOT VISIBLE.
- CONTROL OF ALL EXTERIOR LUMINAIRES SHALL BE LINKED TO HOURS OF DARKNESS AND TIME OF DAY. THIS WILL BE THROUGH THE USE OF A PHOTOCELL UNIT AND/OR ASTRONOMICAL TIME CLOCK.
- BOTH FUNCTIONAL AND FEATURE LIGHTING MUST ALSO HAVE THE PROVISION TO BE MANUALLY SWITCHED, VIA A SCENE SETTING PLATE LOCATED INTERNALLY.
- EMERGENCY LIGHTING LAYOUTS HAVE BEEN BASED ON INFORMATION PROVIDED IN ARCHITECT'S STAGE 3 FIRE COMPARTMENTATION DRAWING SET ISSUED ON 21.01.2019. CONTRACTOR MUST ALLOW FOR EMERGENCY LIGHTING COORDINATION POST STAGE 4, TO ACCOUNT FOR ANY CHANGES WHICH MAY HAVE OCCURRED DURING STAGE 4. NO HIGH RISK AREAS HAVE BEEN IDENTIFIED AT THIS STAGE. A FULL RISK ASSESSMENT MUST BE CONDUCTED BY THE RELEVANT PERSON IN CONJUNCTION WITH THE RESPONSIBLE PERSON ON THE CLIENT BODY, AS OUTLINED IN BSS5266.

| ISSUE / DESCRIPTION | ISSUE NO. | DATE | BY | DATE |
|----------------------------------|-----------|------|----|----------|
| X02 ISSUE FOR PLANNING | BN | TNCB | | 27.11.20 |
| X01 ISSUE FOR PLANNING | BN | TNCB | | 18.09.20 |
| C01 CONTRACT ISSUE | BN | TNCB | | 24.07.20 |
| P03 FIRST ISSUE FOR TENDER | BN | TNCB | | 05.07.19 |
| P02 DRAFT ISSUE FOR COORDINATION | BN | CB | | 17.06.19 |
| P01 DRAFT ISSUE FOR COORDINATION | BN | CB | | 20.05.19 |

| REVISION / DESCRIPTION | DATE | APPROVED | DATE |
|------------------------|------|----------|------|
| X02 PLAN | | | |

CLIENT

BLUESTAR
 CAPITAL INVESTMENTS

BDP.

16 Brewhouse Yard
 Clerkenwell
 London EC1V 4LJ
 T +44 (0)20 7812 8000
 F +44 (0)20 7812 8399
 www.bdp.com

PROJECT

PROJECT PHOENIX

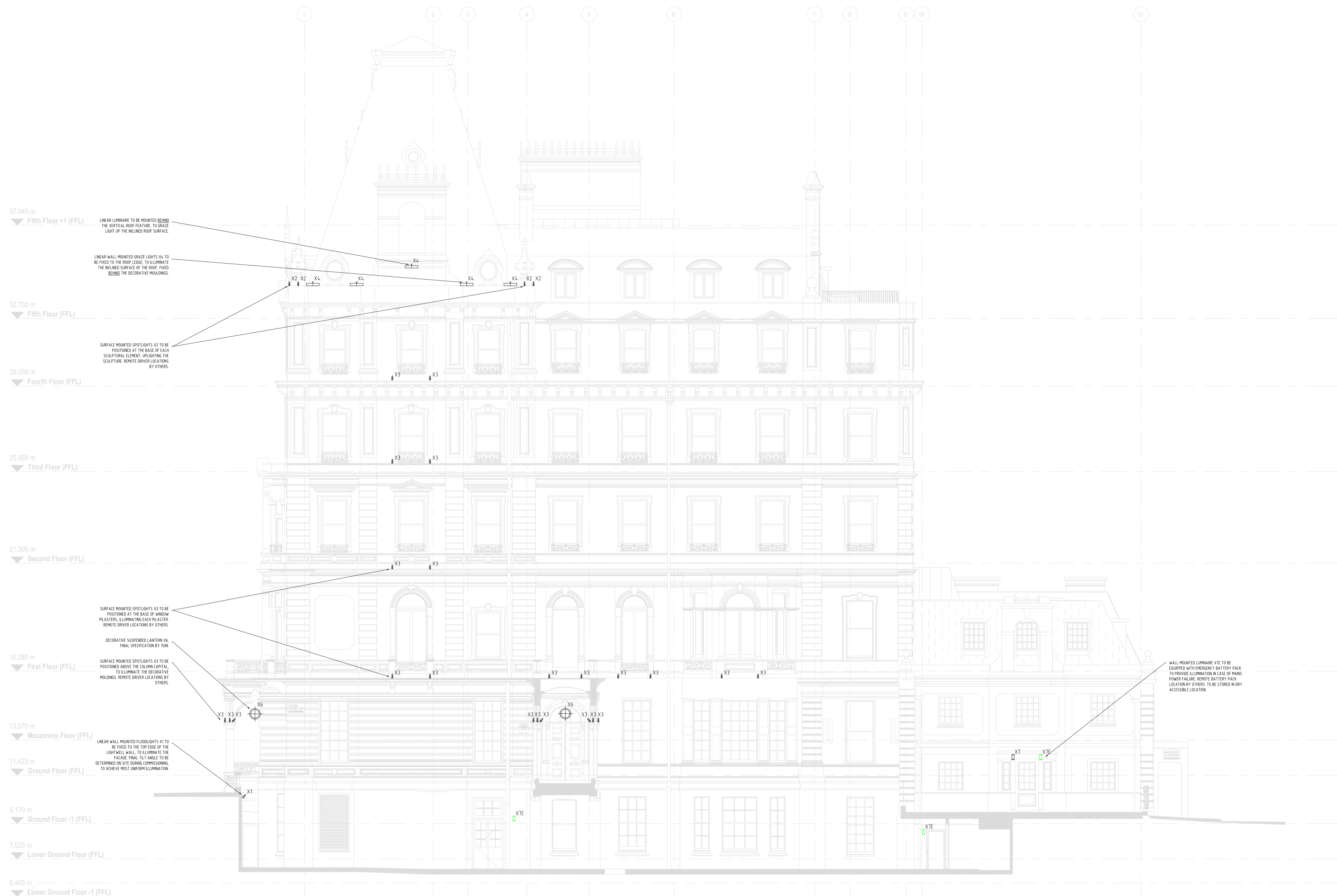
DRAWING TITLE

HALKIN STREET FAÇADE ELEVATION

SCALE 1:100

DATE 25.04.2019

JOB NUMBER P2008316 DRAWING NO. PHNX-BDP-ZZ-XX-DR-YL-70-80-2002 REGION X02



37.045 m
 Fifth Floor +1 (FFL)

32.700 m
 Fifth Floor (FFL)

29.558 m
 Fourth Floor (FFL)

25.568 m
 Third Floor (FFL)

21.305 m
 Second Floor (FFL)

16.280 m
 First Floor (FFL)

13.070 m
 Mezzanine Floor (FFL)

11.423 m
 Ground Floor (FFL)

9.170 m
 Ground Floor -1 (FFL)

7.525 m
 Lower Ground Floor (FFL)

6.405 m
 Lower Ground Floor -1 (FFL)

LINEAR LUMINAIRE TO BE MOUNTED BEHIND THE VERTICAL ROOF FEATURE, TO GRAZE LIGHT UP THE INCLINED ROOF SURFACE.

LINEAR WALL MOUNTED GRAZE LIGHTS X4 TO BE FIXED TO THE ROOF EDGE, TO ILLUMINATE THE INCLINED SURFACE OF THE ROOF, FIXED BEHIND THE DECORATIVE MOLDINGS.

SURFACE MOUNTED SPOTLIGHTS X3 TO BE POSITIONED AT THE BASE OF EACH SCULPTURAL ELEMENT, UP LIGHTING THE SCULPTURE. REMOTE DRIVER LOCATIONS BY OTHERS.

SURFACE MOUNTED SPOTLIGHTS X3 TO BE POSITIONED AT THE BASE OF WINDOW PLASTERS, ILLUMINATING EACH PLASTER. REMOTE DRIVER LOCATIONS BY OTHERS.

DECORATIVE SUSPENDED LANTERN X5. FINAL SPECIFICATION BY SOB.

SURFACE MOUNTED SPOTLIGHTS X3 TO BE POSITIONED ABOVE THE COLUMN CAPITAL, TO ILLUMINATE THE DECORATIVE MOLDINGS. REMOTE DRIVER LOCATIONS BY OTHERS.

LINEAR WALL MOUNTED FLOODLIGHTS X1 TO BE FIXED TO THE TOP EDGE OF THE LIGHTWELL WALL, TO ILLUMINATE THE FACADE. FINAL FIXING HEIGHTS TO BE DETERMINED ON SITE DURING COMMISSIONING TO ACHIEVE BEST UNIFORM ILLUMINATION.

WALL MOUNTED LUMINAIRE X7 TO BE EQUIPPED WITH EMERGENCY BATTERY PACK TO PROVIDE ILLUMINATION IN CASE OF MAINS POWER FAILURE. IDENTIFY BATTERY PACK LOCATION BY OTHERS. TO BE STORED IN DRY ACCESSIBLE LOCATION.

