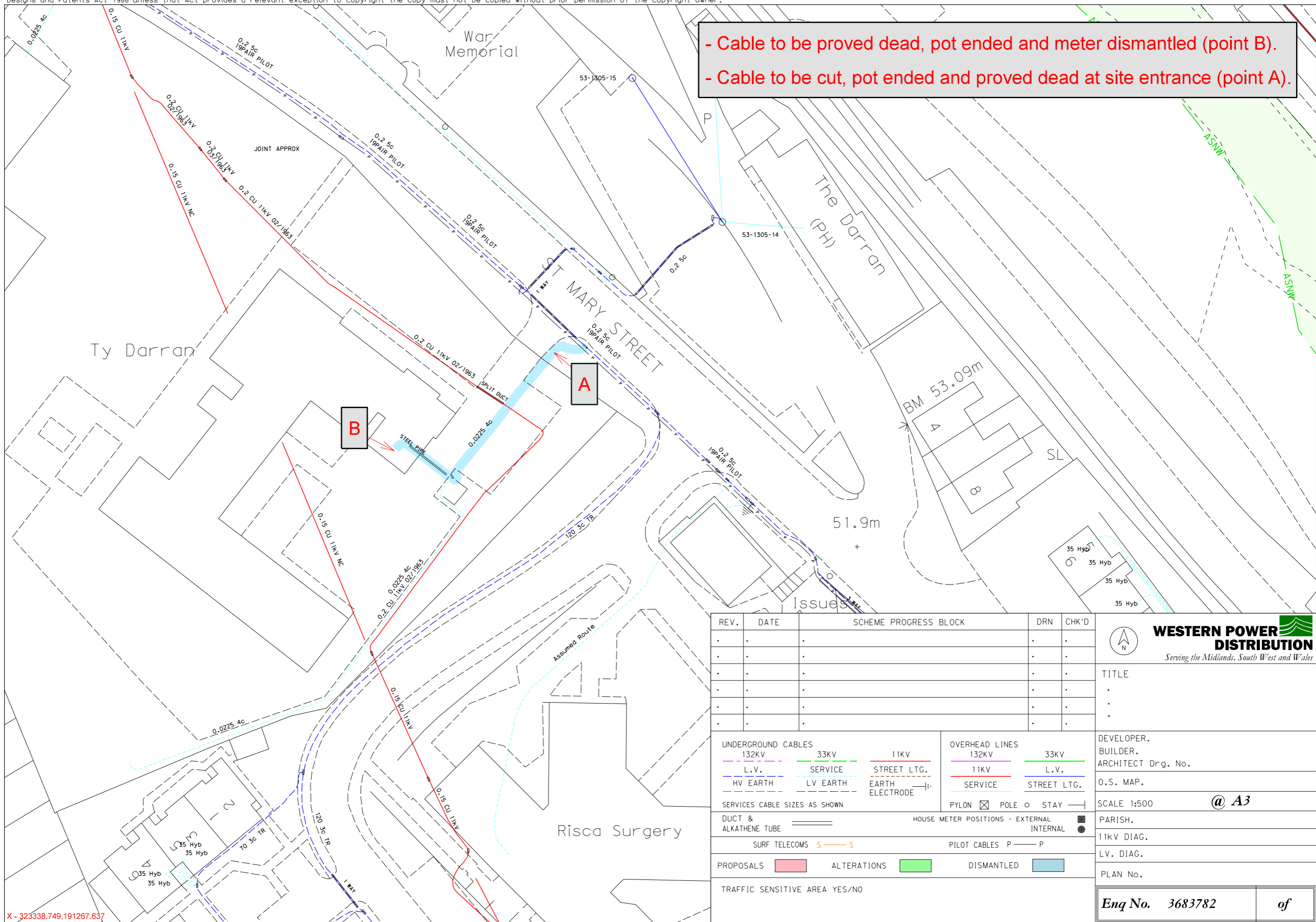


- Cable to be proved dead, pot ended and meter dismantled (point B).
 - Cable to be cut, pot ended and proved dead at site entrance (point A).

Information is given as a guide only and its accuracy cannot be guaranteed.

PLEASE NOTE: This plan ONLY shows assets owned by Western Power Distribution. Electricity assets owned by IDNO's (Independent Network Operators) MAY be present in this area.



REV.	DATE	SCHEME PROGRESS BLOCK	DRN	CHK'D

UNDERGROUND CABLES 132KV 33KV 11KV L.V. SERVICE STREET LTG. HV EARTH LV EARTH EARTH ELECTRODE	OVERHEAD LINES 132KV 33KV 11KV L.V. SERVICE STREET LTG.
SERVICES CABLE SIZES AS SHOWN DUCT & ALKATHENE TUBE	PYLON ☒ POLE ○ STAY — HOUSE METER POSITIONS - EXTERNAL INTERNAL
SURF TELECOMS S — S PROPOSALS ALTERATIONS DISMANTLED	PILOT CABLES P — P TRAFFIC SENSITIVE AREA YES/NO

WESTERN POWER DISTRIBUTION
Serving the Midlands, South West and Wales

TITLE

DEVELOPER.
 BUILDER.
 ARCHITECT Drg. No.
 O.S. MAP.
 SCALE 1:500 @ **A3**
 PARISH.
 11KV DIAG.
 LV. DIAG.
 PLAN No.

Enq No. **3683782** of