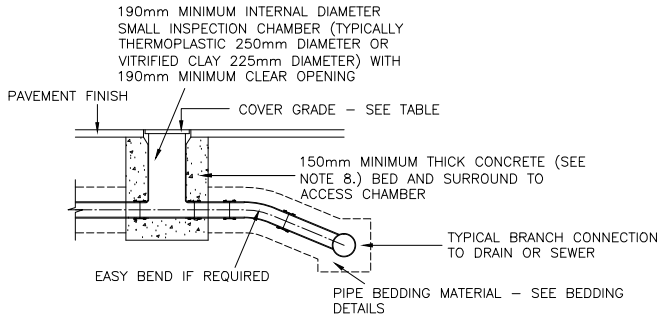
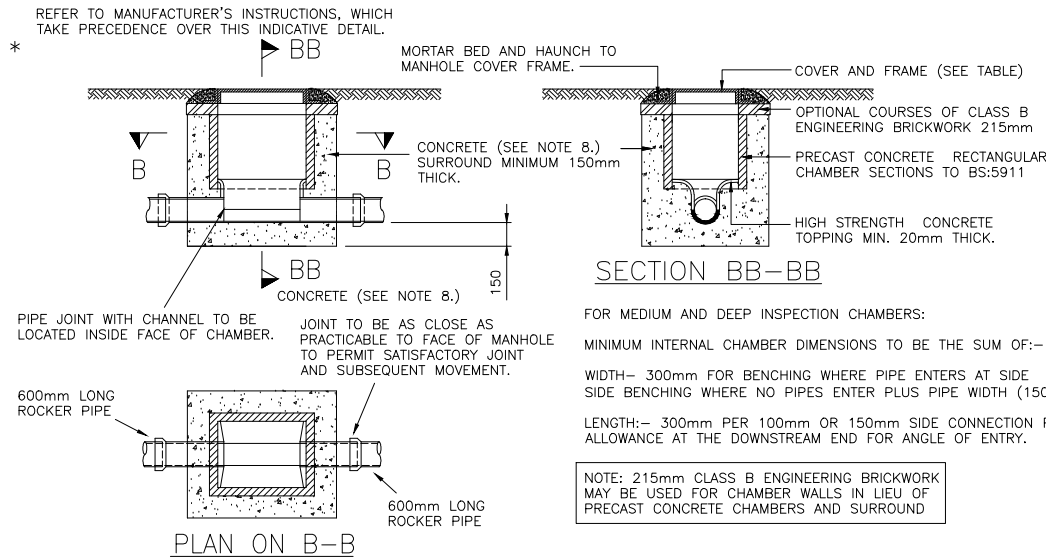


DO NOT SCALE

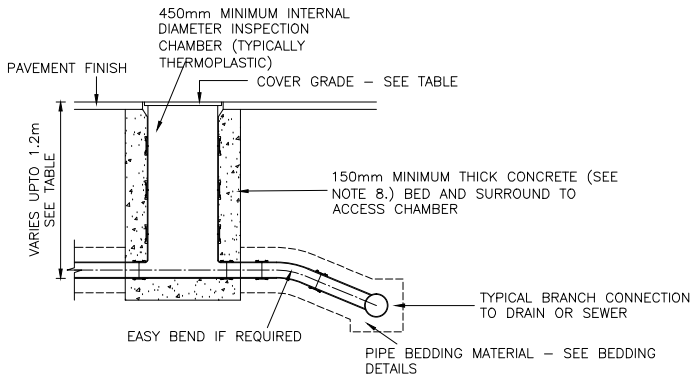


WHERE INSPECTION CHAMBERS ARE LOCATED IN FIELDS AND GARDENS/LANDSCAPED AREAS, CONCRETE SURROUND CAN BE REPLACED WITH SUITABLE 'AS-DUG' MATERIAL OR GRANULAR MATERIAL SUBJECT TO MANUFACTURERS INSTRUCTIONS.

TYPICAL SHALLOW INSPECTION CHAMBER
DETAIL FOR USE IN DRIVEWAYS/CAR
PARKING AREAS (NOT SUBJECT TO HEAVY
VEHICLE LOADING)
SCALE 1:25

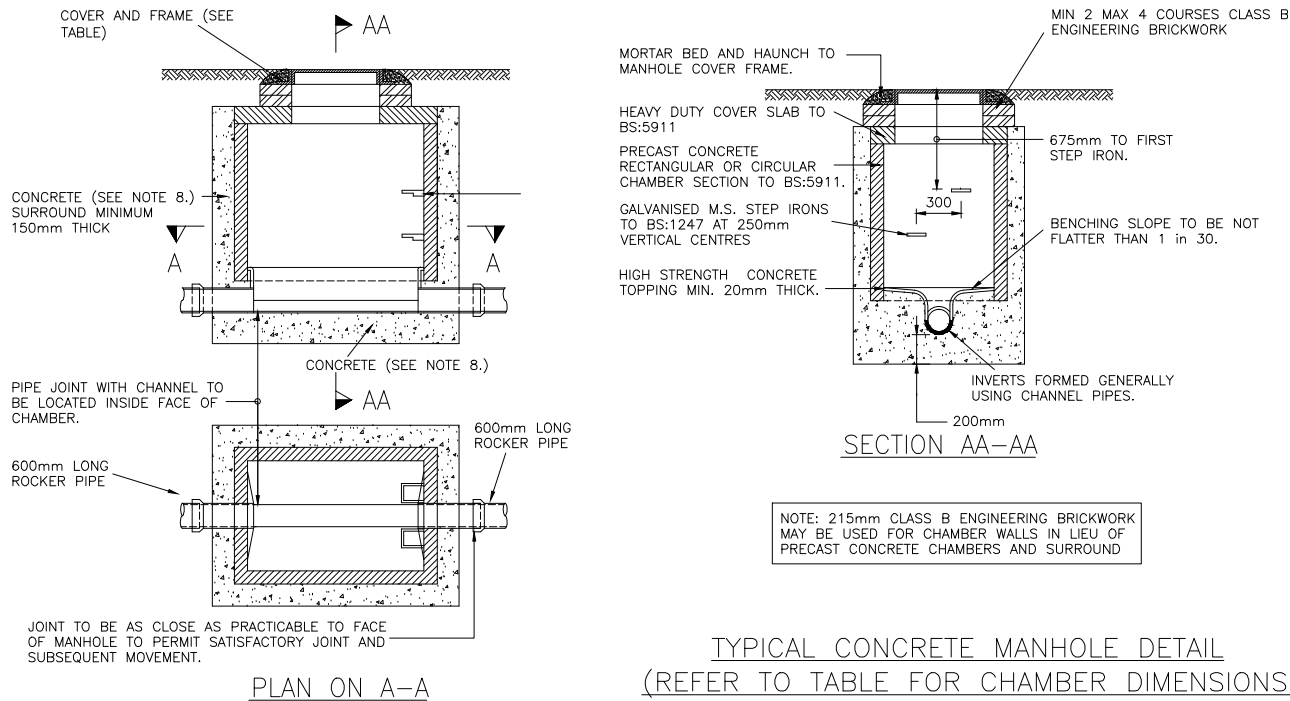


TYPICAL CONCRETE INSPECTION CHAMBER DETAIL
(REFER TO TABLE FOR CHAMBER DIMENSIONS)
SCALE 1:25



WHERE INSPECTION CHAMBERS ARE LOCATED IN FIELDS AND GARDENS/LANDSCAPED AREAS, CONCRETE SURROUND CAN BE REPLACED WITH SUITABLE 'AS-DUG' MATERIAL OR GRANULAR MATERIAL SUBJECT TO MANUFACTURERS INSTRUCTIONS.

TYPICAL MEDIUM DEPTH INSPECTION CHAMBER
DETAIL FOR USE IN DRIVEWAYS/CAR PARKING AREAS
(NOT SUBJECT TO HEAVY VEHICLE LOADING)
SCALE 1:25



TYPICAL CONCRETE MANHOLE DETAIL
(REFER TO TABLE FOR CHAMBER DIMENSIONS)
SCALE 1:25

MINIMUM DIMENSIONS FOR ACCESS FITTINGS AND INSPECTION CHAMBERS					
TYPE OF ACCESS	DEPTH TO INVERT FROM COVER LEVEL (m)	MINIMUM INTERNAL DIMENSIONS (1)		MINIMUM CLEAR OPENING SIZE (1)	
		LENGTH x WIDTH (mm x mm)	CIRCULAR (mm)	LENGTH x WIDTH (mm x mm)	CIRCULAR (mm)
RODDING EYE	—	AS DRAIN BUT MINIMUM 100mm.	—	—	SAME SIZE AS PIPEWORK
ACCESS FITTING	0.6m OR LESS EXCEPT WHERE SITUATED IN A CHAMBER	AS DRAIN BUT MINIMUM 100mm.	—	—	—
SMALL 150mm DIA.		150 x 100	150	150 x 100 (1)	SAME SIZE AS ACCESS FITTING
SMALL 150x100mm		225 x 100	225	225 x 100 (1)	
LARGE 225x100mm					
INSPECTION CHAMBER					
SHALLOW	0.6m OR LESS	225 x 100	190 (2)		190 (1)
MEDIUM	1.2m OR LESS	450 x 450	450	MIN 430 x 430	430
DEEP	GREATER THAN 1.2m	450 x 450	450	MAX 300 x 300 (3)	ACCESS RESTRICTED TO MAX 350 (3)

NOTES:
(1) THE CLEAR OPENING MAY BE REDUCED BY 20mm IN ORDER TO PROVIDE PROPER SUPPORT FOR THE COVER AND FRAME.
(2) DRAINS UP TO 150mm DIAMETER.
(3) A LARGER CLEAR OPENING COVER MAY BE USED IN CONJUNCTION WITH A RESTRICTED ACCESS. THE SIZE IS RESTRICTED FOR HEALTH AND SAFETY REASONS TO DETER ENTRY.

MINIMUM DIMENSIONS FOR MANHOLES					
TYPE OF ACCESS	SIZE OF LARGEST PIPE (DN)	MINIMUM INTERNAL DIMENSIONS (1)		MINIMUM CLEAR OPENING SIZE (1)	
		RECTANGULAR LENGTH x WIDTH (mm x mm)	CIRCULAR DIAMETER (mm)	RECTANGULAR LENGTH x WIDTH (mm x mm)	CIRCULAR DIAMETER (mm)
MANHOLE LESS THAN 1.5m DEEP TO SOFFIT	LESS THAN OR EQUAL TO 150	750 x 675 (7)	1000 (7)	750 x 675 (2)	N/A (3)
	225	1200 x 675	1200	1200 x 675 (2)	
	300	1200 x 750	1200		
	GREATER THAN 300	1800 x (DN+450)	THE LARGER OF 1800 or (DN+450)		
MANHOLE GREATER THAN 1.5m DEEP TO SOFFIT	LESS THAN OR EQUAL TO 225	1200 x 1000	1200	600 x 600	600
	300	1200 x 1075	1200		
	375-450	1350 x 1225	1200		
	GREATER THAN 450	1800 x (DN+775)	THE LARGER OF 1800 or (DN+775)		
MANHOLE SHAFT (4) GREATER THAN 3.0m DEEP TO SOFFIT OF PIPE	STEPS (5)	1050 x 800	1050	600 x 600	600
	LADDER (5)	1200 x 800	1200		
	WINCH (6)	900 x 800	900		

NOTES:
(1) LARGER SIZES MAY BE REQUIRED FOR MANHOLES ON BENDS OR WHERE THERE ARE JUNCTIONS.
(2) MAY BE REDUCED TO 600x600mm WHERE REQUIRED BY HIGHWAY LOADING CONSIDERATIONS, SUBJECT TO A SAFE SYSTEM OF WORK BEING SPECIFIED.
(3) NOT APPLICABLE DUE TO WORKING SPACE NEEDED.
(4) MINIMUM HEIGHT OF CHAMBER IN SHAFTED MANHOLE 2m FROM BENCHING TO UNDERSIDE OF REDUCING SLAB.
(5) MINIMUM CLEAR SPACE BETWEEN LADDER OR STEPS AND THE OPPOSITE FACE OF THE SHAFT SHOULD BE APPROXIMATELY 900mm.
(6) WINCH ONLY - NO STEPS OR LADDERS, PERMANENT OR REMOVABLE.
(7) THE MINIMUM SIZE OF ANY MANHOLE SERVING A SEWER (I.E. ANY DRAIN SERVING MORE THAN ONE PROPERTY) SHOULD BE 1200x750mm RECTANGULAR OR 1200mm DIAMETER.

TABLE SHOWING PRIVATE MANHOLE/INSPECTION CHAMBER COVER GRADES AND AREAS OF USE	
COVER GRADE TO BS EN: 124	LOCATION
D400	FOR USE IN INDUSTRIAL ROADS AND PARKING AREAS ACCESSIBLE TO ALL TYPES OF ROAD VEHICLES INCLUDING HGV'S.
C250*	FOR USE IN PRIVATE ROADS OR PARKING AREAS eg. CAR PARKS AND MINOR PRIVATE ROADS ACCESSIBLE TO REFUSE VEHICLES, FIRE APPLIANCES ETC WITH POSSIBLE OCCASIONAL HGV USE.
B125	FOR USE IN FOOTWAYS, PEDESTRIAN AREAS, DRIVEWAYS AND CAR PARKS ACCESSIBLE BY LIGHT VEHICLES ONLY.
A15	FOR USE IN AREAS WHICH CAN ONLY BE USED BY PEDESTRIANS AND PEDAL CYCLISTS
* D400 MAY BE USED IN LIEU OF C250 IF PREFERRED.	

NOTES:

- 1) ALL BUILDING DRAINAGE TO BE INSTALLED AND TESTED IN COMPLIANCE WITH THE BUILDING REGULATIONS 2000 DRAINAGE AND WASTE DISPOSAL, APPROVED DOCUMENT H, 2010 EDITION.
- 2) ALL COMPONENTS AND MATERIALS ARE TO BE MANUFACTURED AND SUPPLIED IN ACCORDANCE WITH THE RELEVANT BRITISH STANDARDS, AND LAID AND BACKFILLED IN ACCORDANCE WITH MANUFACTURERS INSTRUCTIONS AND THE RELEVANT BRITISH STANDARDS.
- 3) THE CONTRACTOR SHALL, BEFORE COMMENCING THE WORKS, VERIFY ALL SITE AND SETTING OUT DIMENSIONS. THE CONTRACTOR SHALL BE RESPONSIBLE FOR THE TRUE AND PROPER SETTING OUT OF THE WORKS AND FOR THE CORRECTNESS OF THE POSITION, LEVELS, DIMENSIONS, AND ALIGNMENT OF ALL PARTS OF THE WORKS.
- 4) SMALL LIGHTWEIGHT ACCESS COVERS SHOULD BE SECURED (FOR EXAMPLE WITH SCREWS) TO DETER UNAUTHORISED ACCESS.
- 5) INSPECTION CHAMBERS AND MANHOLES IN BUILDINGS TO HAVE MECHANICALLY FIXED AIRTIGHT COVERS UNLESS THE DRAIN ITSELF HAS WATERTIGHT ACCESS COVERS.
- 6) MANHOLES DEEPER THAN 1M TO HAVE GALVANISED STEEL STEP IRONS OR FIXED LADDERS.
- 7) ALL ABOVE GROUND DRAINAGE TO INCORPORATE RODDING ACCESS FACILITIES.
- 8) INSITU CONCRETE FOR USE IN GENERAL DRAINAGE WORKS SHALL BE IN ACCORDANCE WITH BS:8500, AND IN ACCORDANCE WITH THE RECOMMENDATIONS OF THE SITE INVESTIGATION REPORT, AND IN ACCORDANCE WITH BRE DIGEST 1 "CONCRETE IN AGGRESSIVE GROUND" TO MEET ANY EXPECTED SULPHATE CONDITIONS.
- 9) MANHOLE COVERS WITHIN BLOCK PAVED AREAS SHALL BE RECESSED WITH INFILL TO MATCH ADJACENT SURFACING.

REV	DATE	DESCRIPTION	DRAWN	CHKD
REVISIONS				

This drawing is to be read in conjunction with all other Engineer's drawings and all other project information. Any discrepancy between the Engineer's drawings and other project information is to be reported to the Engineer immediately.



Project
**WALTER GIDNEY PAVILION
SOHAM, CAMBRIDGESHIRE
PHASE II WORKS**

Title
**PRIVATE DRAINAGE
CONSTRUCTION DETAILS
SHEET 1 OF 3**

Client
SOHAM TOWN COUNCIL

Scale AS SHOWN @ A1	Drawn NTU	Date MARCH 2020
Job Manager R. MORRIS	Checked SJH	Approved RNL

RichardJackson
Engineering Consultants

847 The Crescent, Colchester, Essex CO4 9YQ
Unit 6040, 6th Floor, Aldgate Tower, 2 Leman Street, London E1 8FA
5 Owen House, Mill Court, Great Shelford, Cambs CB22 3LD
4 The Old Church, St. Matthews Road, Norwich, Norfolk NR1 1SP
The Wheelhouse, Bonds Mill, Stonehouse, Gloucestershire GL10 3BP
Email Address: mail@rj.co.uk
Website: http://www.rj.co.uk

Tel: 01206 228800
Tel: 020 7448 9910
Tel: 01223 314794
Tel: 01603 230240
Tel: 01172 020070

Drawing No.
43661/C/11

Revision

Drawing Status
☐ INFORMATION
☐ TENDER

☒ APPROVAL
☐ CONSTRUCTION

☐ COSTING
☐ AS CONSTRUCTED