

Material	Manufactured in selected engineered laminated pine or hardwood, sourced from sustainable and managed forestry (FSC or PFEC certified)
Mechanism	Sashes are hung on cords or chains, operating over pulleys and counter balanced with lead weights
Weatherseal	The window is fully weather sealed to BS EN 6375-1 2009
Glazing	Windows are internally beaded with the external rebate up stand to give the appearance of putty glazing
Glass	The window is factory glazed with 24 mm thickness dual sealed units
Thermal Performance	Thermal performance is calculated by the standards of EN ISO 10077-1:2006 and typically this window achieves a U-value of 1.6 W/m²K or better
Glazing Bars	Applied bars are used to achieve the slim section of traditional glazing bars. These are applied with double sided glazing tape to both faces of the sealed unit and capped with clear silicone
Cills	Manufactured in Hardwood with options of cill projections
Horns	Solid feature horns to top sashes are included as standard (See Drawing No H-001)
Fittings	A lockable Fitch fastener and two finger pulls to the bottom sash with options in colour and finish
Ventilation	A controllable trickle ventilator can be fitted to the window dependant on width of frame (See Drawing No BOX-160/09)
Restrictors	Restrictors which allows the opening of the sash to be restricted to 100mm is an option
Factory Finishing	To ensure the smooth operation and optimum performance of the window, we apply 3 coats of sprayed applied microporous water based paint system

PRODUCT TYPE

TRADITIONAL BOX SASH WINDOW

TITLE

ELEVATION DRAWING

DRAWING No.

BOX-160/01

DATE

2017/09/21

SCALE

1:10 @ A3

CONSTRUCTION DETAILS

The Wooden Sash Window Co Ltd  
62 Pembroke Crescent  
Hove  
BN3 5DG  
  
Tel 01273 958229  
Mob 07973 375992

PRODUCT TYPE
1. <b>Product A</b>
2. <b>Product B</b>
3. <b>Product C</b>
4. <b>Product D</b>
5. <b>Product E</b>
6. <b>Product F</b>
7. <b>Product G</b>
8. <b>Product H</b>
9. <b>Product I</b>
10. <b>Product J</b>
11. <b>Product K</b>
12. <b>Product L</b>
13. <b>Product M</b>
14. <b>Product N</b>
15. <b>Product O</b>
16. <b>Product P</b>
17. <b>Product Q</b>
18. <b>Product R</b>
19. <b>Product S</b>
20. <b>Product T</b>
21. <b>Product U</b>
22. <b>Product V</b>
23. <b>Product W</b>
24. <b>Product X</b>
25. <b>Product Y</b>
26. <b>Product Z</b>
27. <b>Product AA</b>
28. <b>Product AB</b>
29. <b>Product AC</b>
30. <b>Product AD</b>
31. <b>Product AE</b>
32. <b>Product AF</b>
33. <b>Product AG</b>
34. <b>Product AH</b>
35. <b>Product AI</b>
36. <b>Product AJ</b>
37. <b>Product AK</b>
38. <b>Product AL</b>
39. <b>Product AM</b>
40. <b>Product AN</b>
41. <b>Product AO</b>
42. <b>Product AP</b>
43. <b>Product AQ</b>
44. <b>Product AR</b>
45. <b>Product AS</b>
46. <b>Product AT</b>
47. <b>Product AU</b>
48. <b>Product AV</b>
49. <b>Product AW</b>
50. <b>Product AX</b>
51. <b>Product AY</b>
52. <b>Product AZ</b>
53. <b>Product BA</b>
54. <b>Product BB</b>
55. <b>Product BC</b>
56. <b>Product BD</b>
57. <b>Product BE</b>
58. <b>Product BF</b>
59. <b>Product BG</b>
60. <b>Product BH</b>
61. <b>Product BI</b>
62. <b>Product BJ</b>
63. <b>Product BK</b>
64. <b>Product BL</b>
65. <b>Product BM</b>
66. <b>Product BN</b>
67. <b>Product BO</b>
68. <b>Product BP</b>
69. <b>Product BQ</b>
70. <b>Product BR</b>
71. <b>Product BS</b>
72. <b>Product BT</b>
73. <b>Product BU</b>
74. <b>Product BV</b>
75. <b>Product BW</b>
76. <b>Product BX</b>
77. <b>Product BY</b>
78. <b>Product BZ</b>
79. <b>Product CA</b>
80. <b>Product CB</b>
81. <b>Product CC</b>
82. <b>Product CD</b>
83. <b>Product CE</b>
84. <b>Product CF</b>
85. <b>Product CG</b>
86. <b>Product CH</b>
87. <b>Product CI</b>
88. <b>Product CJ</b>
89. <b>Product CK</b>
90. <b>Product CL</b>
91. <b>Product CM</b>
92. <b>Product CN</b>
93. <b>Product CO</b>
94. <b>Product CP</b>
95. <b>Product CQ</b>
96. <b>Product CR</b>
97. <b>Product CS</b>
98. <b>Product CT</b>
99. <b>Product CU</b>
100. <b>Product CV</b>
101. <b>Product CW</b>
102. <b>Product CX</b>
103. <b>Product CY</b>
104. <b>Product CZ</b>
105. <b>Product DA</b>
106. <b>Product DB</b>
107. <b>Product DC</b>
108. <b>Product DD</b>
109. <b>Product DE</b>
110. <b>Product DF</b>
111. <b>Product DG</b>
112. <b>Product DH</b>
113. <b>Product DI</b>
114. <b>Product DJ</b>
115. <b>Product DK</b>
116. <b>Product DL</b>
117. <b>Product DM</b>
118. <b>Product DN</b>
119. <b>Product DO</b>
120. <b>Product DP</b>
121. <b>Product DQ</b>
122. <b>Product DR</b>
123. <b>Product DS</b>
124. <b>Product DT</b>
125. <b>Product DU</b>
126. <b>Product DV</b>
127. <b>Product DW</b>
128. <b>Product DX</b>
129. <b>Product DY</b>
130. <b>Product DZ</b>
131. <b>Product EA</b>
132. <b>Product EB</b>
133. <b>Product EC</b>
134. <b>Product ED</b>
135. <b>Product EE</b>
136. <b>Product EF</b>
137. <b>Product EG</b>
138. <b>Product EH</b>
139. <b>Product EI</b>
140. <b>Product EJ</b>
141. <b>Product EK</b>
142. <b>Product EL</b>
143. <b>Product EM</b>
144. <b>Product EN</b>
145. <b>Product EO</b>
146. <b>Product EP</b>
147. <b>Product EQ</b>
148. <b>Product ER</b>
149. <b>Product ES</b>
150. <b>Product ET</b>
151. <b>Product EU</b>
152. <b>Product EV</b>
153. <b>Product EW</b>
154. <b>Product EX</b>
155. <b>Product EY</b>
156. <b>Product EZ</b>
157. <b>Product FA</b>
158. <b>Product FB</b>
159. <b>Product FC</b>
160. <b>Product FD</b>
161. <b>Product FE</b>
162. <b>Product FF</b>
163. <b>Product FG</b>
164. <b>Product FH</b>
165. <b>Product FI</b>
166. <b>Product FJ</b>
167. <b>Product FK</b>
168. <b>Product FL</b>
169. <b>Product FM</b>
170. <b>Product FN</b>
171. <b>Product FO</b>
172. <b>Product FP</b>
173. <b>Product FQ</b>
174. <b>Product</b>

## TRADITIONAL BOX SASH WINDOW

TITLE
-------

## VERTICAL SECTION

DRAWING No.

BOX-160/02.1

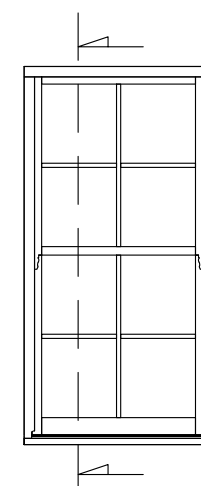
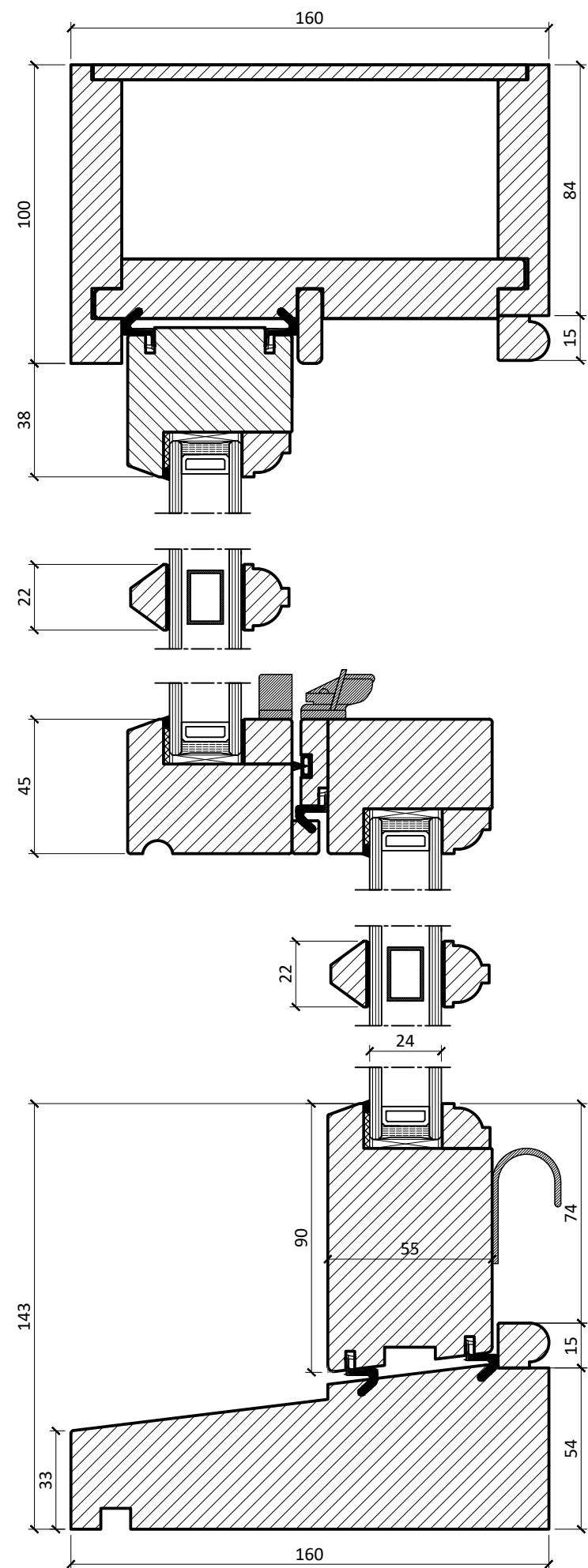
DATE \_\_\_\_\_

2017/09/21

SCALE

1:2 @ A3

## CONSTRUCTION DETAILS



PRODUCT TYPE

**TRADITIONAL BOX  
SASH WINDOW**

TITLE

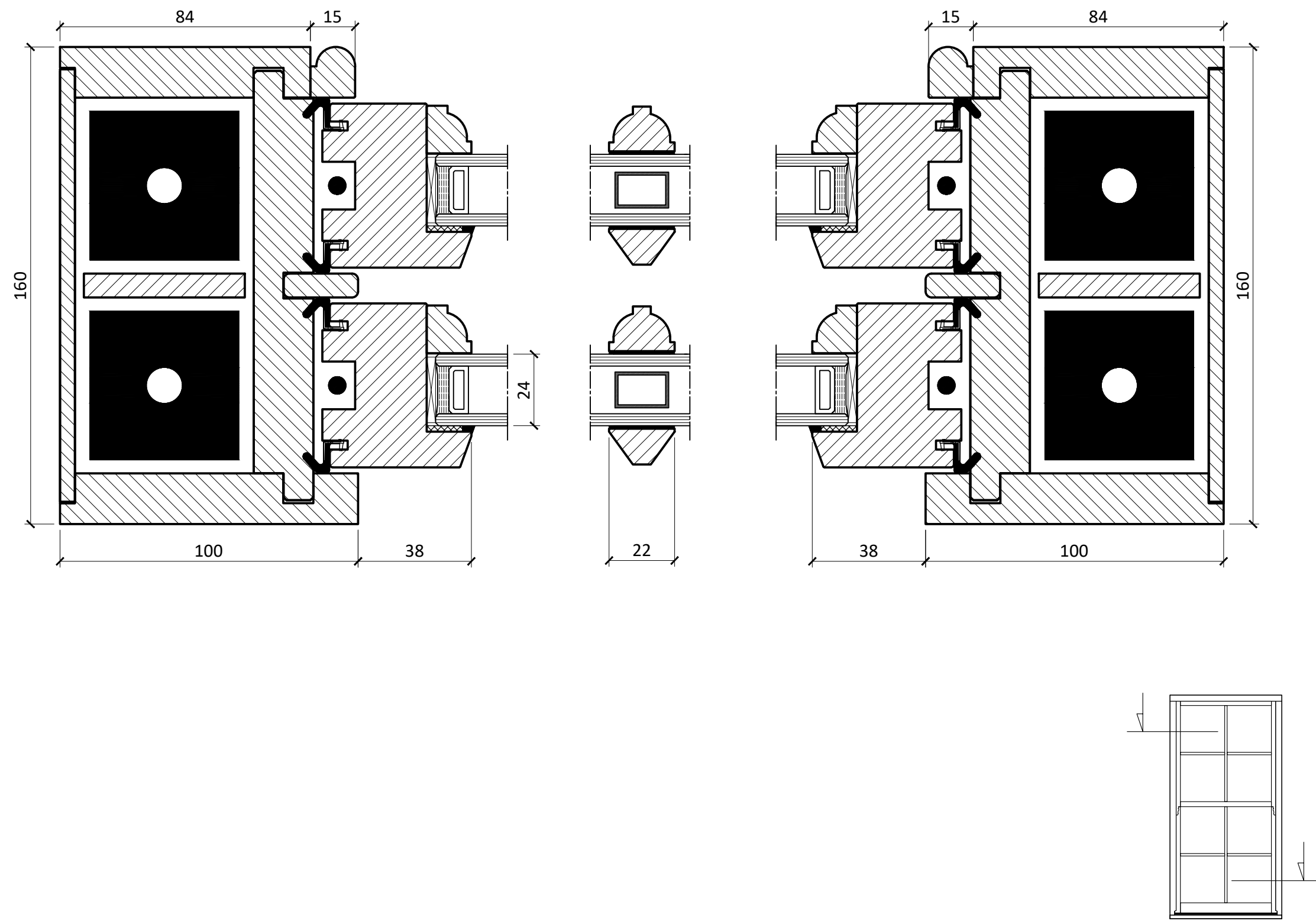
**HORIZONTAL SECTION**

DRAWING No.

**BOX-160/03.1**

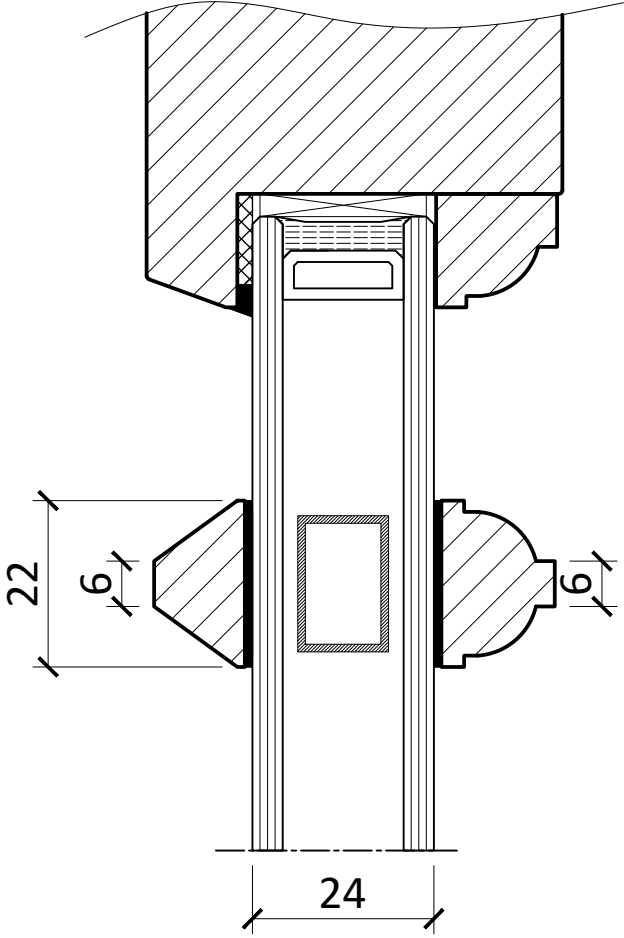
DATE	SCALE
<b>2017/09/21</b>	<b>1:1.5 @ A3</b>

CONSTRUCTION DETAILS

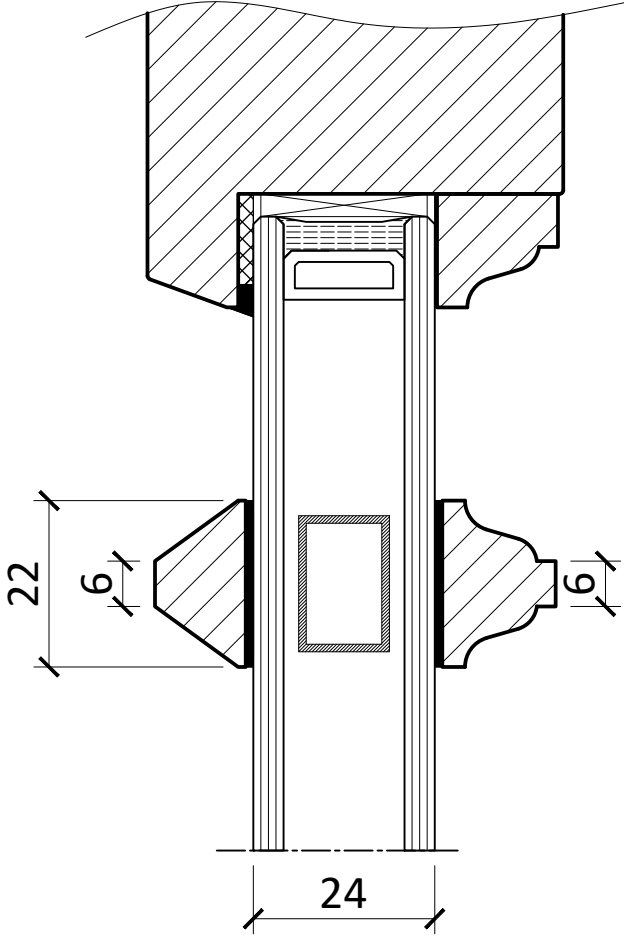


PRODUCT TYPE	
TRADITIONAL BOX SASH WINDOW	
TITLE	
GLAZING BAR AND BEAD OPTIONS	
DRAWING No.	
BOX-160/04.1	
DATE	SCALE
2017/09/21	1:1 @ A3
CONSTRUCTION DETAILS	

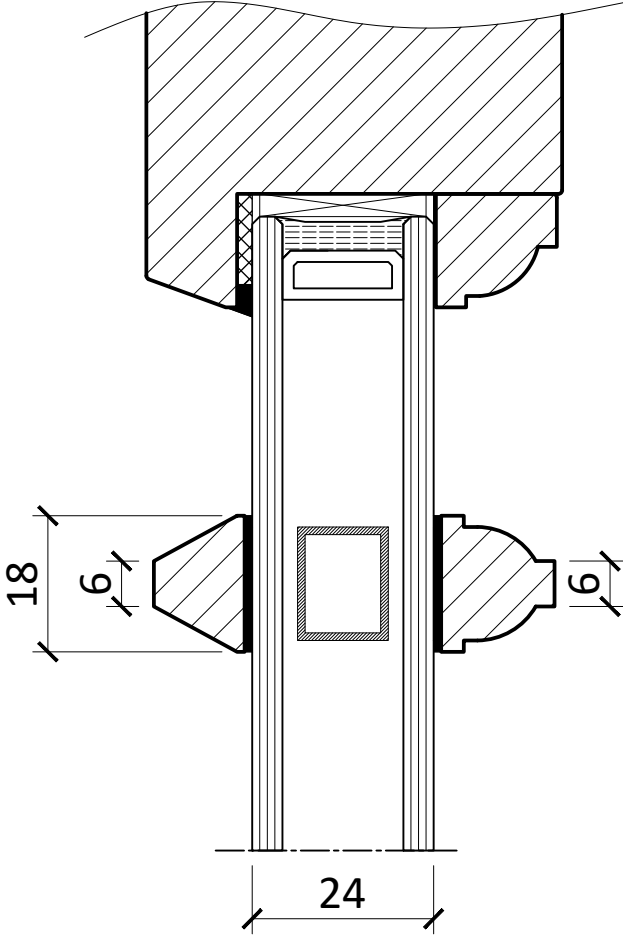
Ovolo Profile 1



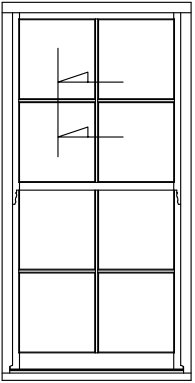
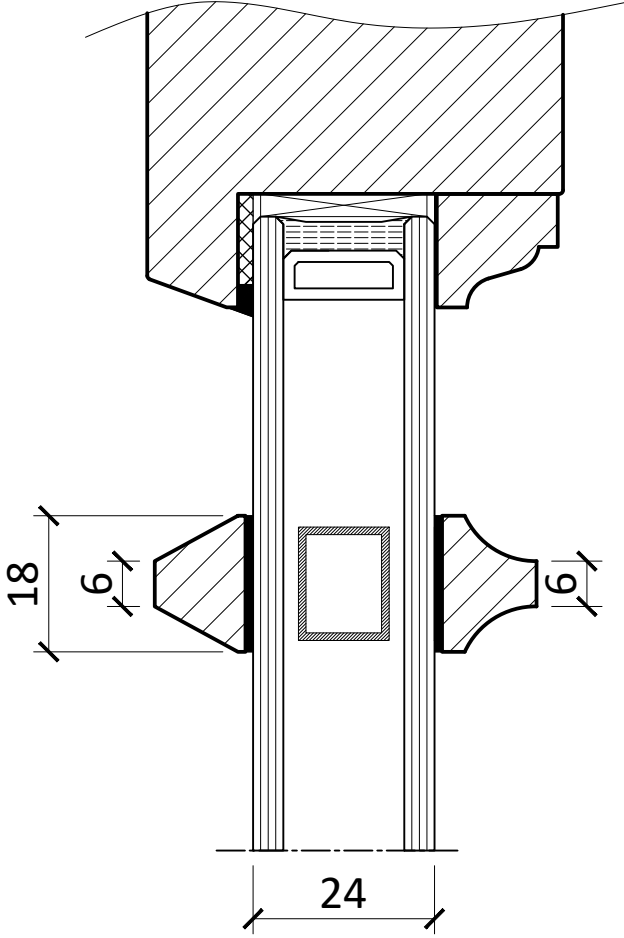
Lambs Tongue Profile 1

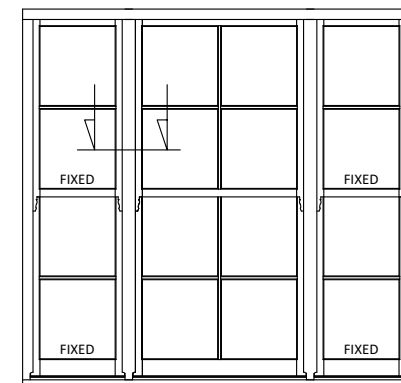
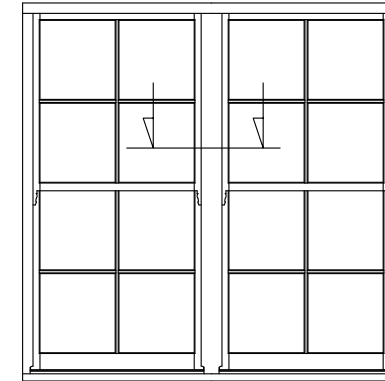
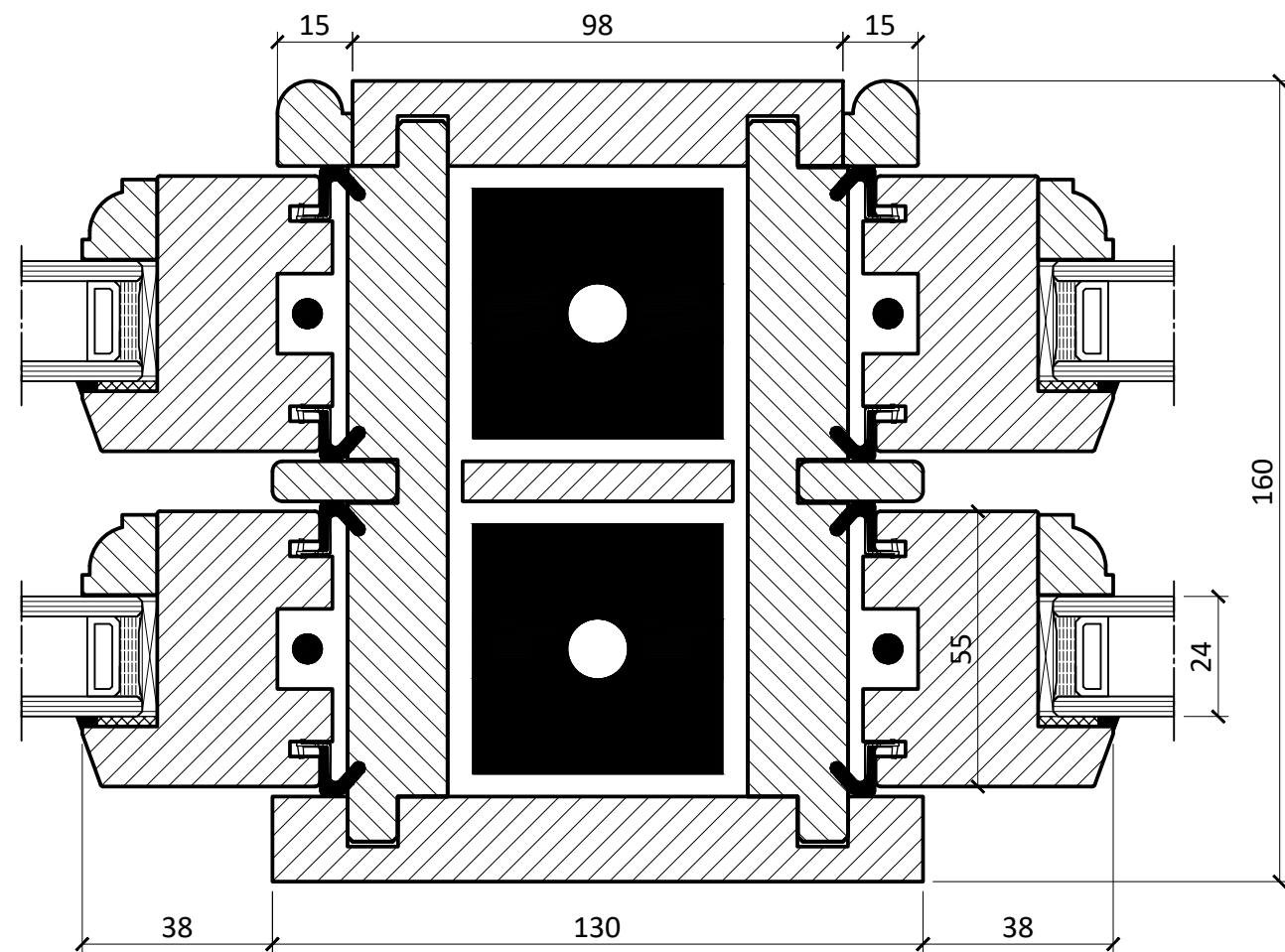
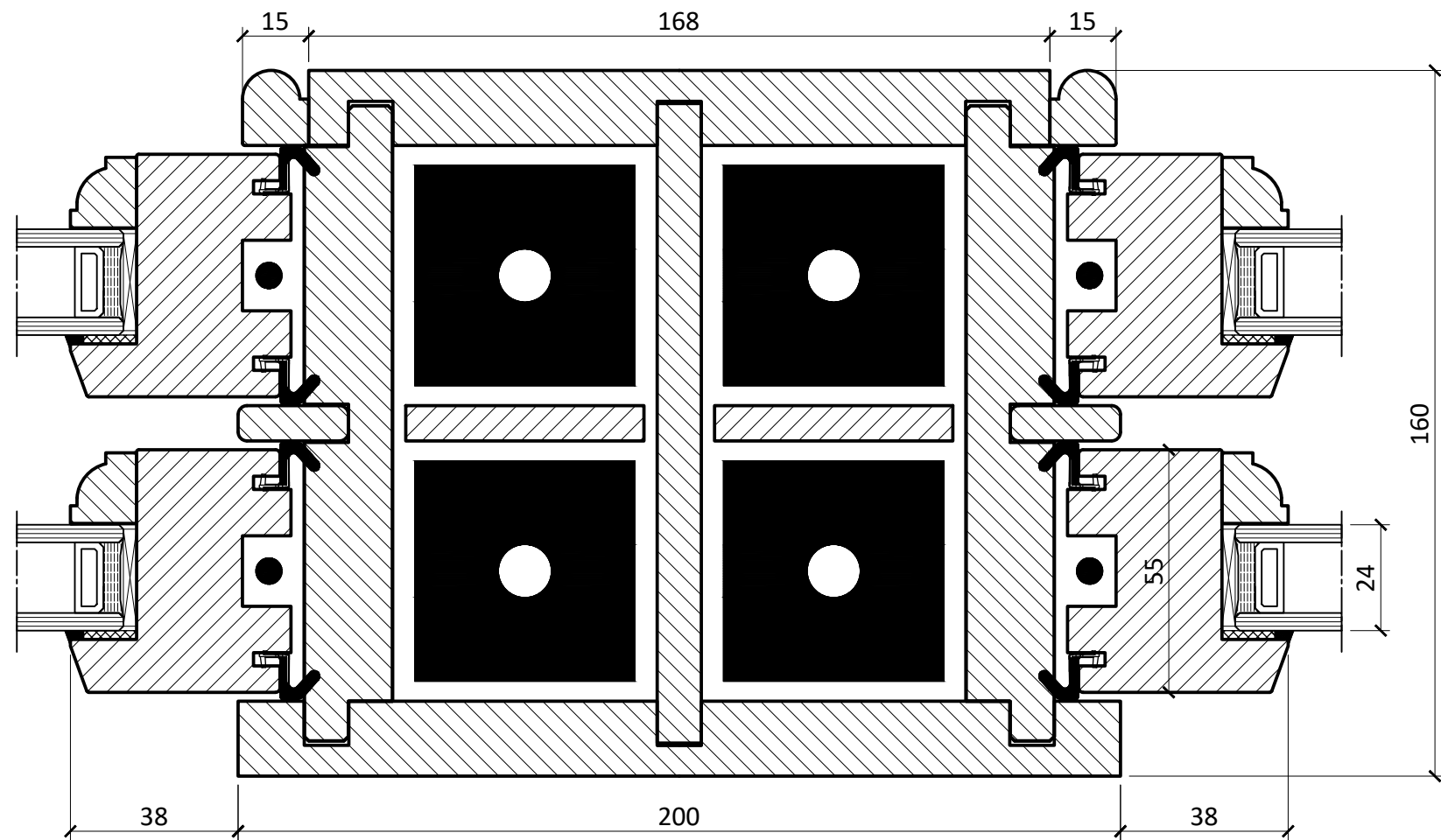


Ovolo Profile 2



Lambs Tongue Profile 2

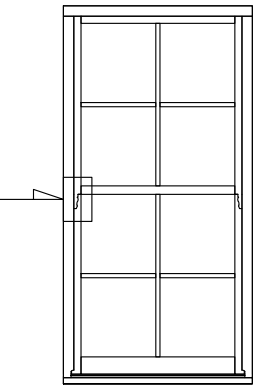
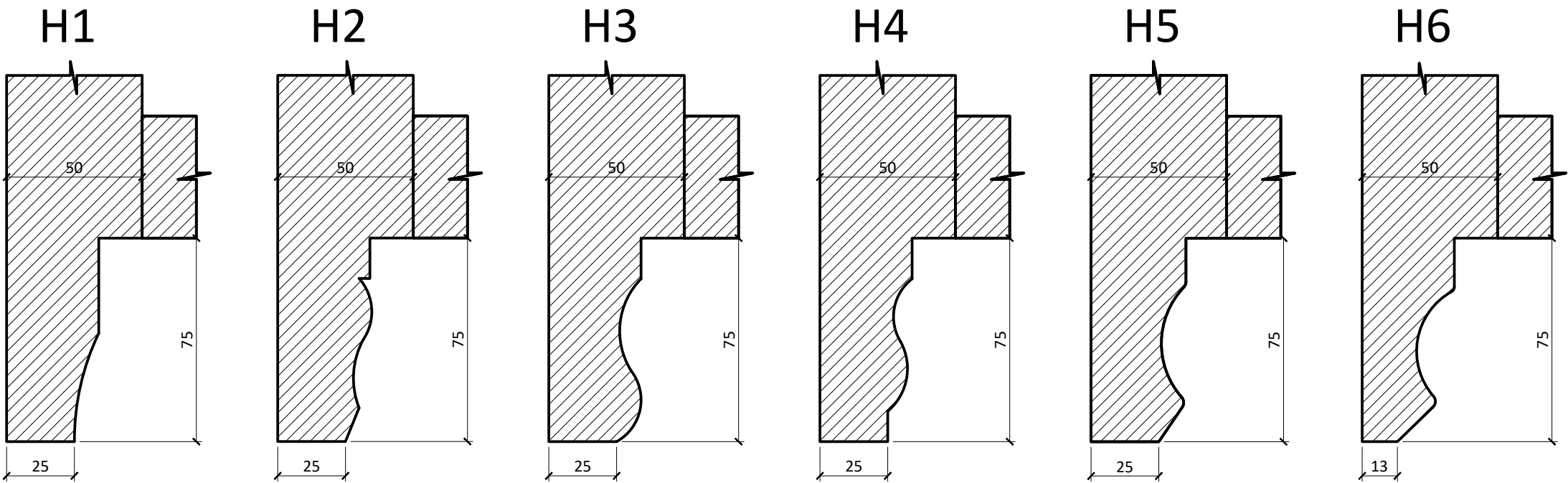


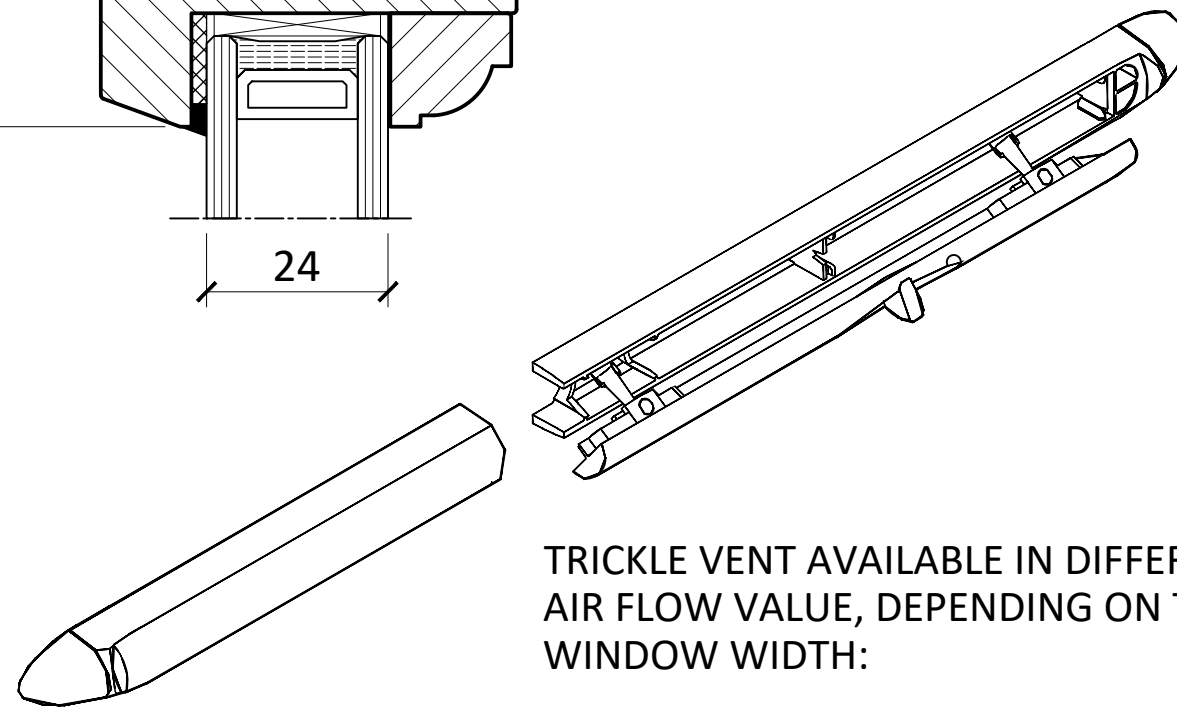
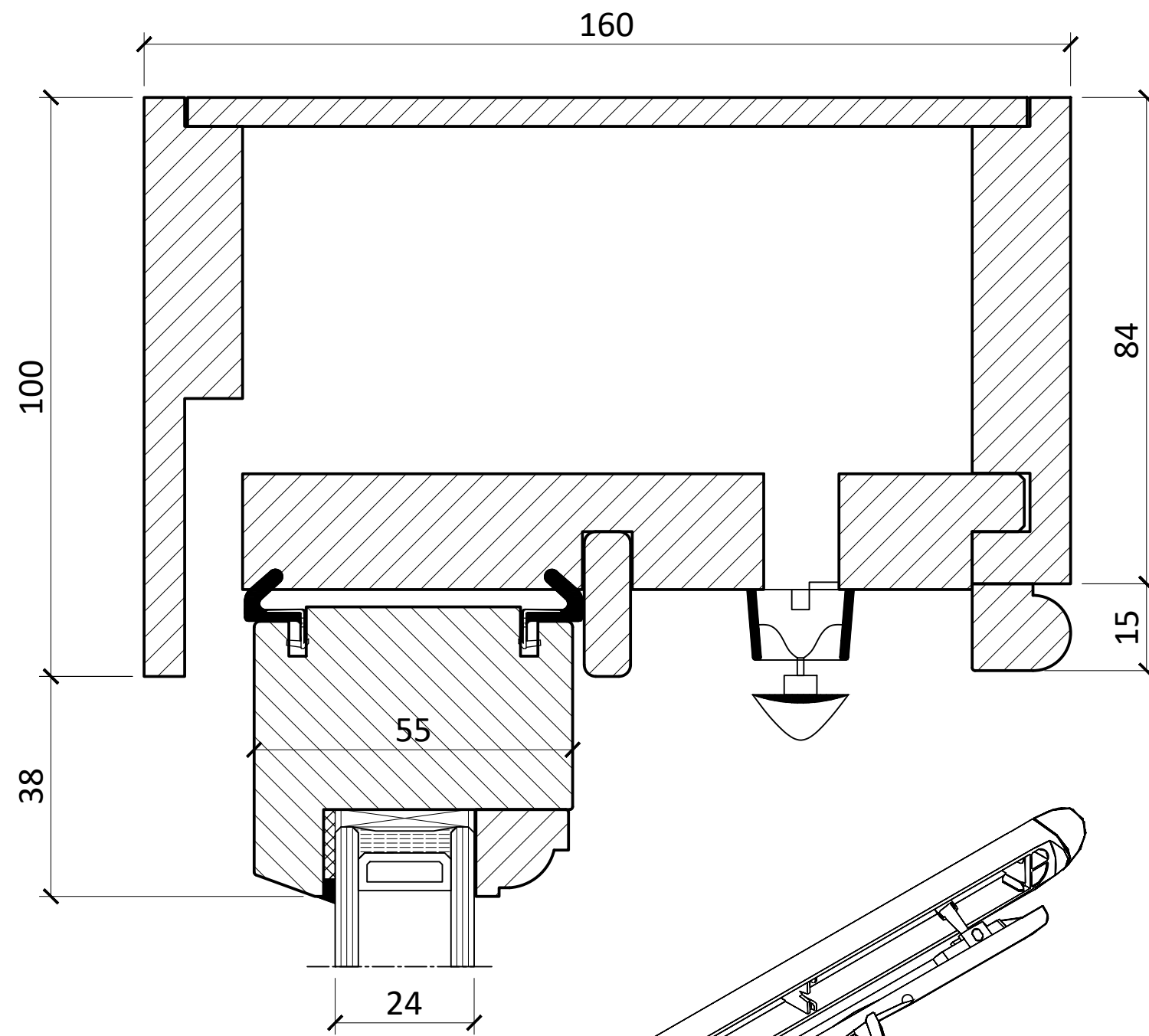


PRODUCT TYPE	
TRADITIONAL BOX SASH WINDOW	
TITLE	
MULLION DETAIL	
DRAWING No.	
BOX-160/05.1	
DATE	SCALE
2017/09/21	1:1.5 @ A3
CONSTRUCTION DETAILS	



PRODUCT TYPE	
TRADITIONAL BOX SASH WINDOW	
TITLE	
SASH HORN OPTIONS	
DRAWING No.	
H-001	
DATE	SCALE
2017/09/21	1:2 @ A3
CONSTRUCTION DETAILS	



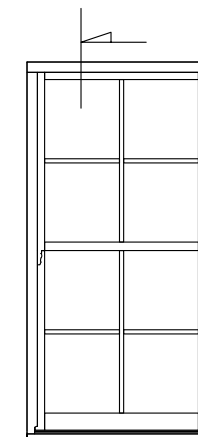


TRICKLE VENT AVAILABLE IN DIFFERENT  
AIR FLOW VALUE, DEPENDING ON THE  
WINDOW WIDTH:

\* - 1700 mm<sup>2</sup> EA

\* - 4400 mm<sup>2</sup> EA

\* - 5000 mm<sup>2</sup> EA



PRODUCT TYPE

## TRADITIONAL BOX SASH WINDOW

TITLE

CONCEALED TRICKLE  
VENT

DRAWING No.

BOX-160/07

DATE

2017/09/21

SCALE

1:1 @ A3

CONSTRUCTION DETAILS