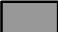






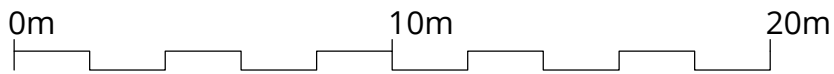
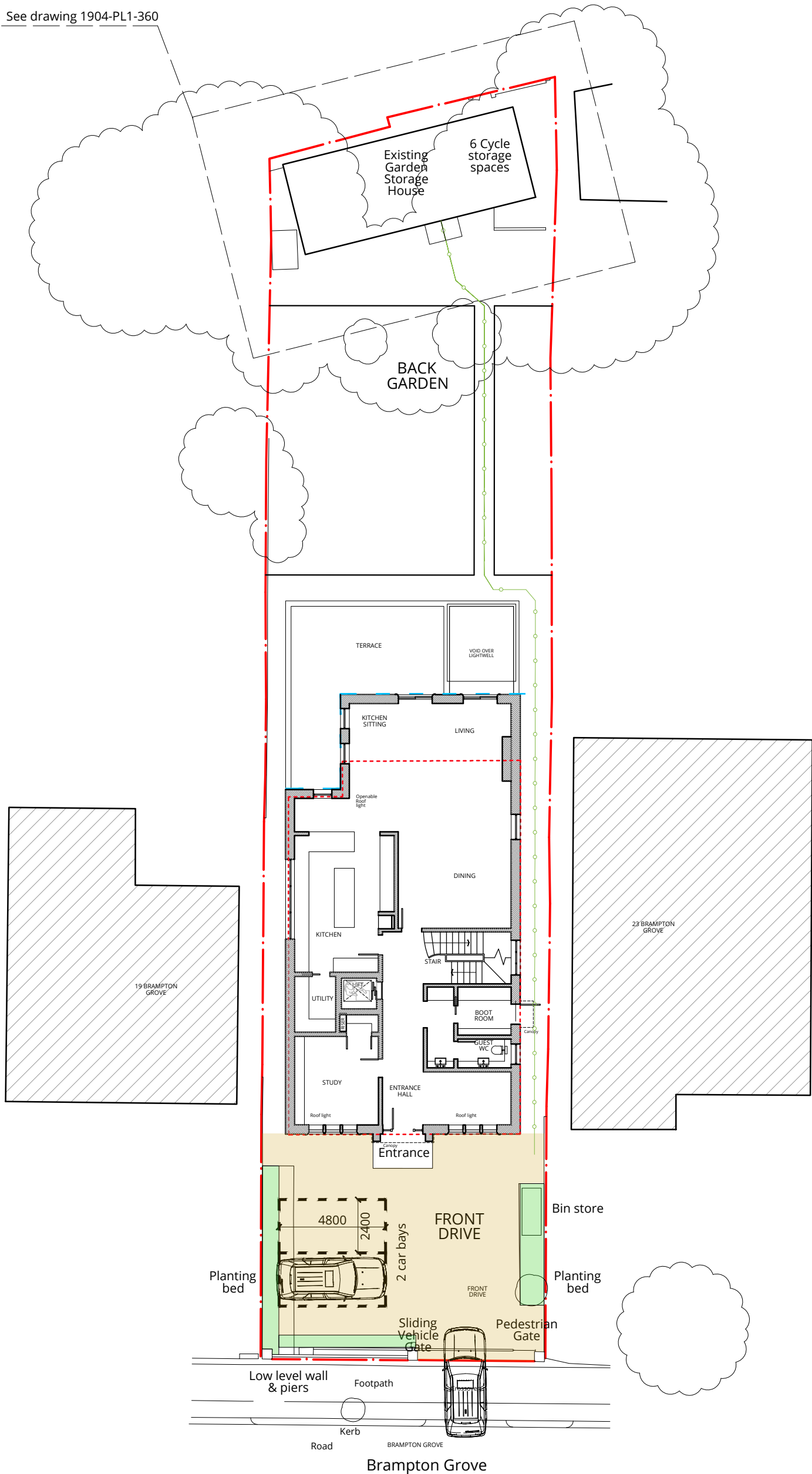
KEY

	existing
	demolished
	proposed

-  access to cycle storage via side path
-  site boundary

This drawing is based on consented drawing 1904-PL1-200-A
 Consent reference: 20/0611/S73
 Dated: 17 Dec 2020

See drawing 1904-PL1-360



London 16 Lambton Place Notting Hill
 London W11 2SH T +44 (0)20 7229 3125
 Oxford Chandos Yard 83 Bicester Road
 Long Crendon HP18 9EE T +44 (0)1844 203310
 W www.wolffarchitects.co.uk E info@wolffarchitects.co.uk
 This drawing is protected under Copyright and at no time should any portion be reproduced or copied without the permission of the Architect (Design Copyright Act 1968).
 It must not be used for purposes other than that for which it is provided. It is supplied without liability for any errors or omissions. All dimensions to be checked on site.

Rev.	Description	Date	Rev.	Description	Date
0	First issue.	12.01.2021			

Project Title					
21 Brampton Grove					
Hendon, London					
Drawing Title					
Proposed site plan showing cycle storage details					
Status		Drawn by		Checked by	
PLANNING					
Scale	Project No.	Work Stage	Dwg. No.	Rev.	
1:200 @ A3	1904 - PL1		359	0	

