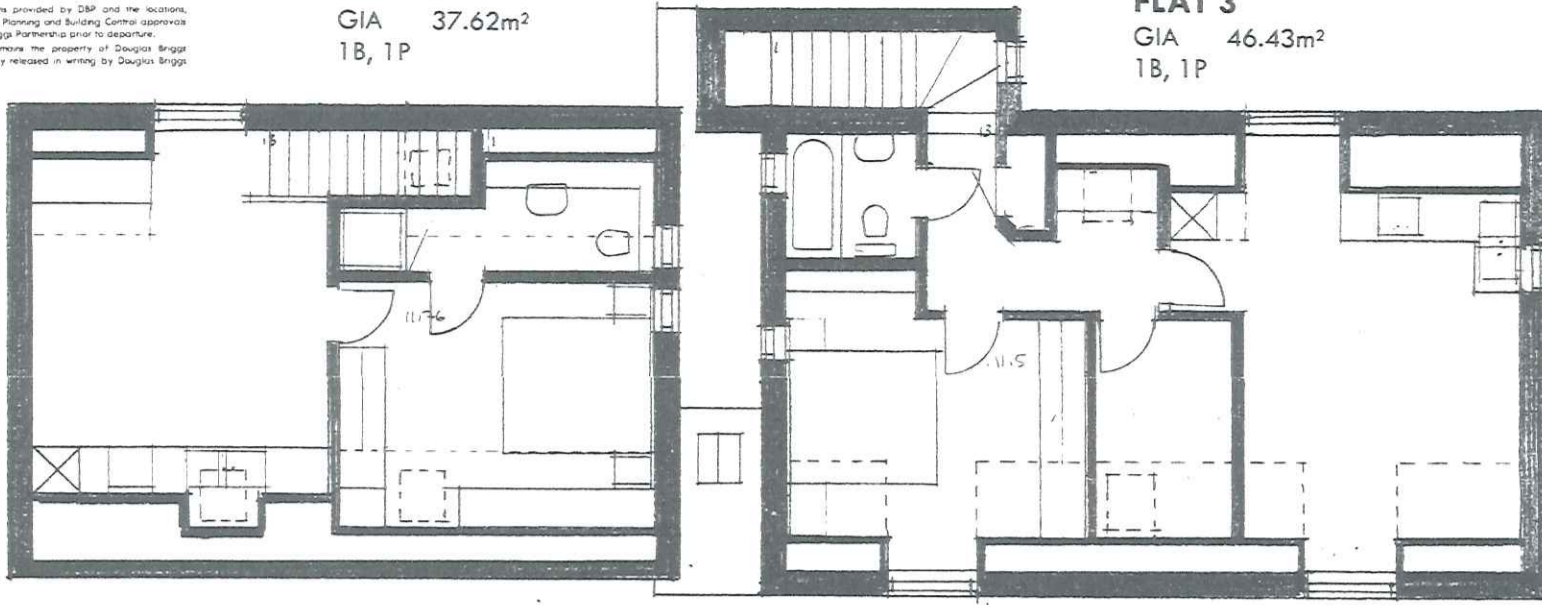


IMPORTANT

- Do not scale from this drawing, except for planning purposes, use figured dimensions only. If in doubt ask Douglas Briggs Partnership 01243 576611 or architecture@douglasbriggs.com
- All dimensions must be checked on site prior to commencement of work and fabrication.
- This drawing/document is to be read in conjunction with other consultants/suppliers information and the Architects contract drawings and specifications etc.
- Any discrepancies between different pieces of information that have been supplied shall be notified immediately to Douglas Briggs Partnership.
- Any departure from dimensions provided by DBP and the location, position or dimensions given in Planning and Building Control approvals shall be notified to Douglas Briggs Partnership prior to departure.
- This design and copyright remains the property of Douglas Briggs Partnership LLP unless expressly released in writing by Douglas Briggs Partnership LLP.

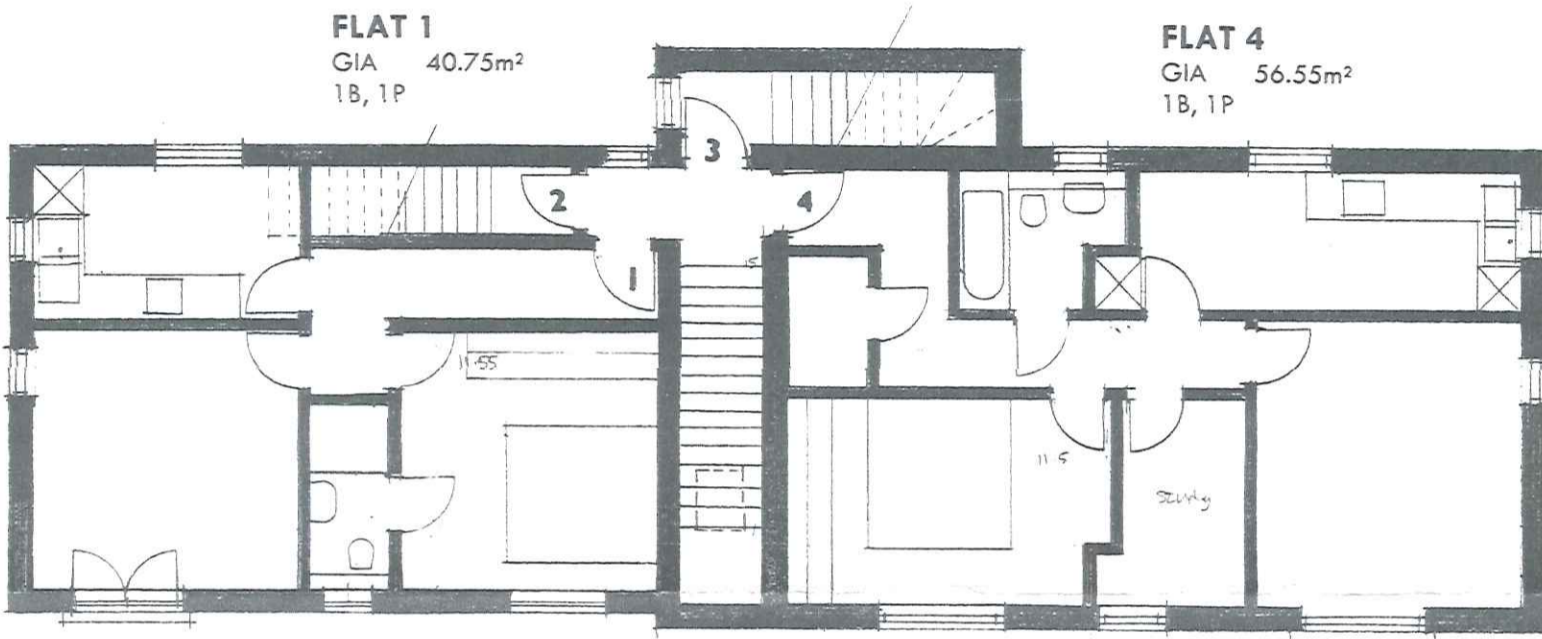
FLAT 2
GIA 37.62m²
1B, 1P

FLAT 3
GIA 46.43m²
1B, 1P

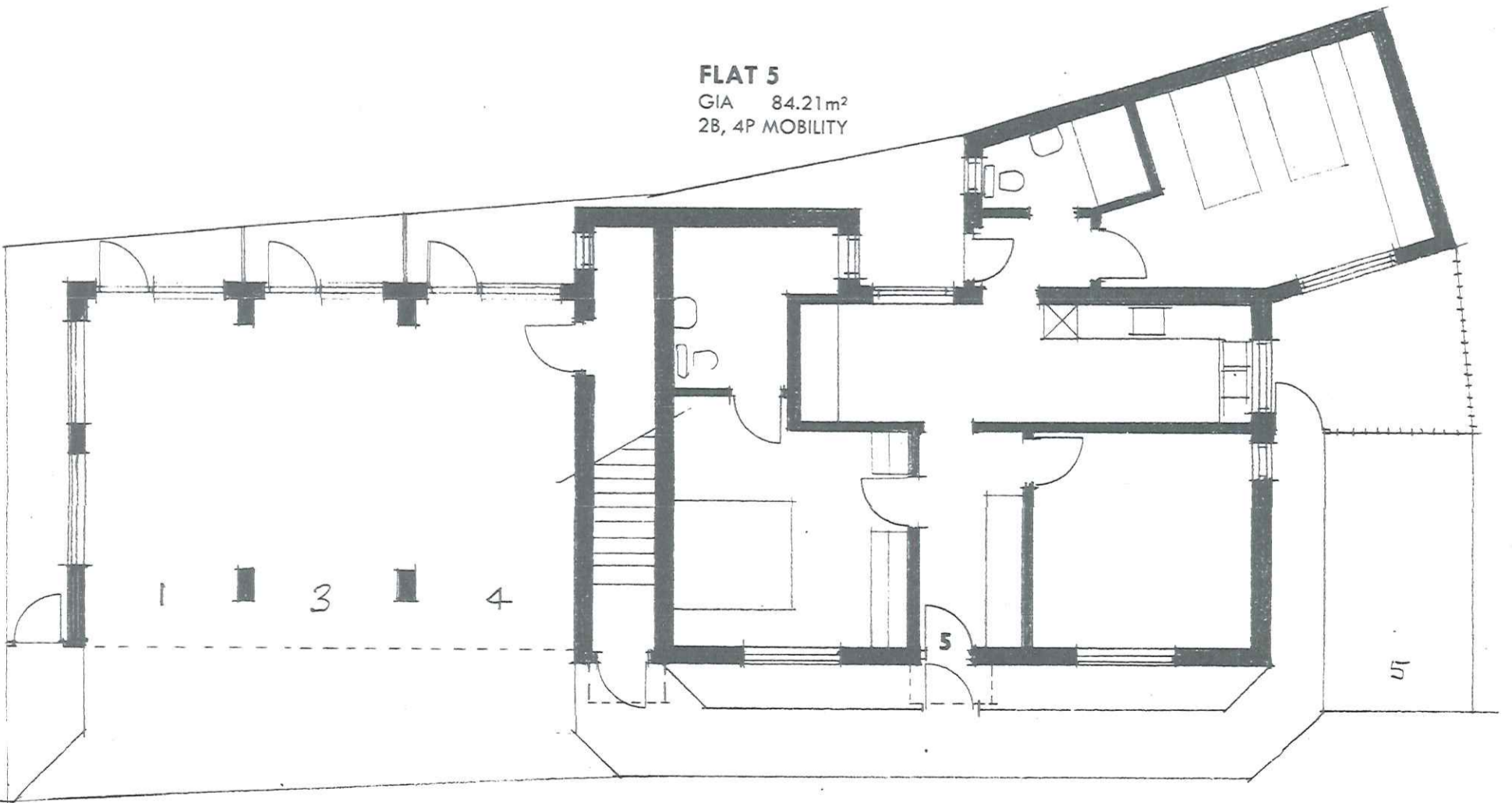


FLAT 1
GIA 40.75m²
1B, 1P

FLAT 4
GIA 56.55m²
1B, 1P



FLAT 5
GIA 84.21m²
2B, 4P MOBILITY



METRES

0
0.5
1
2
3
4
5
6
7
8

DOUGLAS BRIGGS PARTNERSHIP

INTEGRATED
ARCHITECTURE
AND
TOWN PLANNING

Douglas Briggs Partnership
Flint Barns
Ham Farm
Busham
West Sussex PO14 4PH

Residential Redevelopment
5 small flats in lieu of 1 flat and 2 maisonettes
Theatre Lane
High Street, Selsey

PROPOSED
FLAT PLANS
1:100
NOVEMBER 2020
1717.141