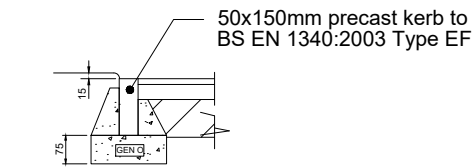
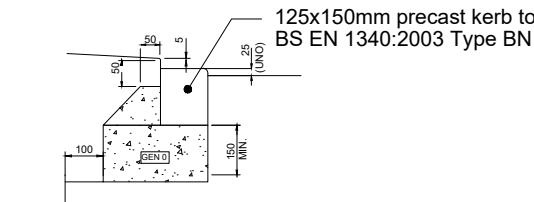


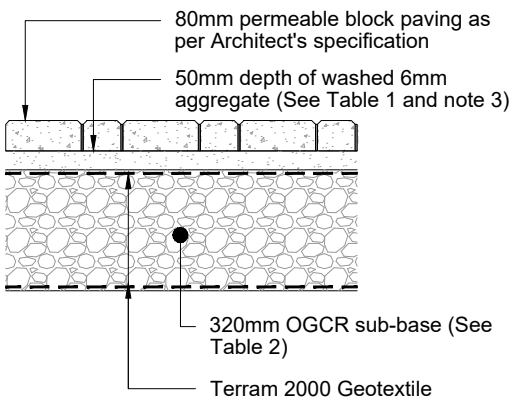
SLABBED FOOTPATH AND PATIO CONSTRUCTION



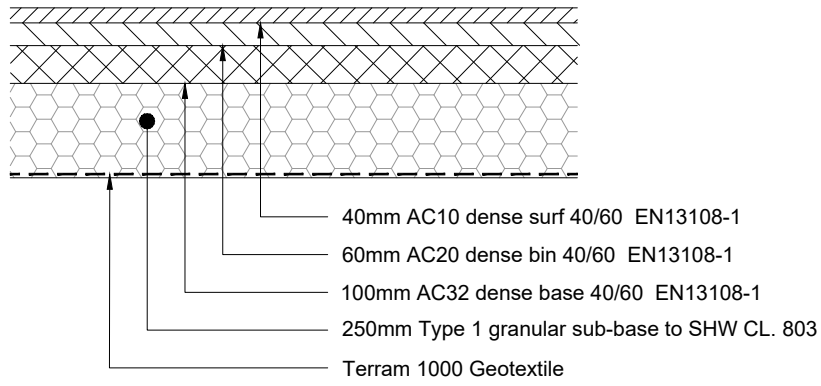
EF KERB



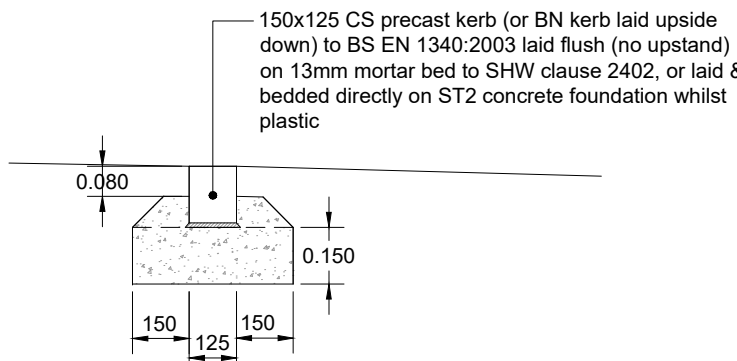
DROPPED BN KERB (VEHICLE ACCESS)



PERMEABLE BLOCK PAVING ROAD AND DRIVEWAY CONSTRUCTION



BITUMINOUS ROAD CONSTRUCTION



CS KERB

Table 1

Laying Course Grading Requirements	
Recommended BS EN 12620 aggregate grading (mm)	2/6.3
Recommended BS EN 12620 grading/tolerance category	Gc80/20
Sieve size (mm)	Percentage by mass passing ISO 565 sieve
31.5	
20	
14	100
10	98 to 100
6.3	80 to 99
4	
2	0 to 20
1	0 to 5
0.063	0 to 2

Table 2

OGCR Sub-Base Grading Requirements	
Recommended BS EN 12620 aggregate grading (mm)	4/20
Recommended BS EN 12620 grading/tolerance category	Gc80/20 GTc20/15
Sieve size (mm)	Percentage by mass passing ISO 565 sieve
31.5	98 to 100
20	90 to 99
14	
10	25 to 70
6.3	
4	0 to 15
3.15	
2	0 to 5

Notes:

- The Open Graded Crushed Rock shall be in accordance with BS 7533-13:2009
- Sound clean non friable sub-base material, free from clay or any other deleterious material. Sub-base grading to BS EN 13242:2002 as shown in table 1.
- Should an alternative material be proposed it is the responsibility of the originator of the alternative material to prove its suitability.
- The pavement must be protected at all times during and after construction from any activity or material to prove its suitability.

DISCLAIMER NOTES:

- THIS DOCUMENT IS COPYRIGHT OF THE ORIGINATOR AND MUST BE TREATED AS CONFIDENTIAL
- THIS DOCUMENT MUST NOT BE ALTERED, REPRODUCED OR DISTRIBUTED WITHOUT PRIOR WRITTEN CONSENT OF THE ORIGINATOR
- THIS DOCUMENT MUST NOT BE ALTERED - THE ORIGINATOR ACCEPTS NO RESPONSIBILITY FOR ANY DISCREPANCIES ARISING AS A RESULT OF THE ORIGINATORS INFORMATION BEING ALTERED BY OTHERS
- ANY DISCREPANCY MUST BE REPORTED TO THE ORIGINATOR
- DO NOT SCALE THIS DOCUMENT - USE FIGURED DIMENSIONS ONLY
- ALL DIMENSIONS MUST BE CHECKED ON SITE PRIOR TO COMMENCEMENT OF ANY RELATED WORKS
- THIS DOCUMENT MUST BE READ IN CONJUNCTION WITH ALL SUPPORTING DOCUMENTS PRODUCED BY THE ORIGINATOR AND OTHER PROJECT DISCIPLINES
- THE ORIGINATOR ACCEPTS NO RESPONSIBILITY FOR THE ACCURACY OF BACKGROUND INFORMATION PRODUCED BY THIRD PARTIES - THIS MUST BE TREATED AS INDICATIVE ONLY
- USERS OF THIS DOCUMENT ARE RESPONSIBLE FOR CHECKING WHICH REVISION IS CURRENT
- THE DOCUMENT STATUS "INFORMATION" OR "PRELIMINARY", INDICATES THAT THIS DRAWING IS FOR REFERENCE PURPOSES ONLY - THE ORIGINATOR WILL ACCEPT NO RESPONSIBILITY FOR THE COMPLETENESS OF INFORMATION UNDER THIS STATUS
- THE DOCUMENT STATUS "RECORD" OR "AS BUILT" HAS BEEN PREPARED, IN PART, BASED UPON INFORMATION FURNISHED BY OTHERS. WHILE THIS INFORMATION IS BELIEVED TO BE RELIABLE, THE ORIGINATOR ASSUMES NO RESPONSIBILITY FOR THE ACCURACY OF THIS "RECORD" OR "AS BUILT" DOCUMENT OR FOR ANY ERRORS OR OMISSIONS THAT MAY HAVE BEEN INCORPORATED INTO IT AS A RESULT OF INCORRECT INFORMATION PROVIDED TO THE ORIGINATOR. THOSE RELYING ON THE "RECORD" OR "AS BUILT" DOCUMENT ARE ADVISED TO OBTAIN INDEPENDENT VERIFICATION OF ITS ACCURACY

DRAWING NOTES:

CDM REGULATIONS 2015  
SIGNIFICANT OR NON-OVIOUS RISKS AND RISKS WHICH ARE DIFFICULT TO MANAGE ARE IDENTIFIED ON THIS DRAWING USING THE FOLLOWING SYMBOL IDENTIFIED TO THE RIGHT WITH BRIEF ACCOMPANYING TEXT. FOR FURTHER DETAILS OF THE RISKS IDENTIFIED BY DESIGNERS, REFERENCE SHOULD BE MADE TO CDM HAZARD REGISTER



-	INITIAL PRELIMINARY ISSUE	18/12/2020	TE
REV	DESCRIPTION	DATE	DRAWN

ORIGINATOR:

**RIDGE**  
PROPERTY & CONSTRUCTION CONSULTANTS

THE COWYARDS  
BLENHEIM PARK  
OXFORD ROAD  
WOODSTOCK, OX20 1QR

TEL: 01993 815000  
WWW.RIDGE.CO.UK

CLIENT:

**BUILDERS EDE LIMITED**

IN ASSOCIATION WITH:

PROJECT:

**CHOICE HILL ROAD  
OVER NORTON**

TITLE:

**EXTERNAL WORKS  
CONSTRUCTION DETAILS**

ENG:	CSE:	ICSE:	SCALE: N.T.S.	@ A1
TE	SW		INITIAL ISSUE:	18/12/2020

STATUS:

**PRELIMINARY**

DRAWING No:

PROJECT:	ORG:	ZONE:	LEVEL:	TYPE:	ROLE:	NUMBER:	REV:
5011581	RDG	XX	ST	DT	C	0711	-