

# astley.

Delivering creative brand environments  
through signage, print and digital solutions



Blackpool, Victoria Road



Address: Victoria Road,  
Blackpool

Drg: G\_76480 - C  
Title: Ext Signage

Visual Status: Fim Approved  
Drg by: MR Date: 11.12.20

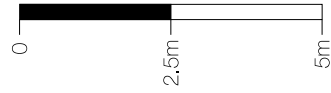
Date	Rev	Amendments
02.12.20	A	Fascia reduced & totems added
04.12.20	B	2m totem name increased in size
08.12.20	B	Item 10 layout confirmed
11.12.20	-	FIM Approved

# Existing Views

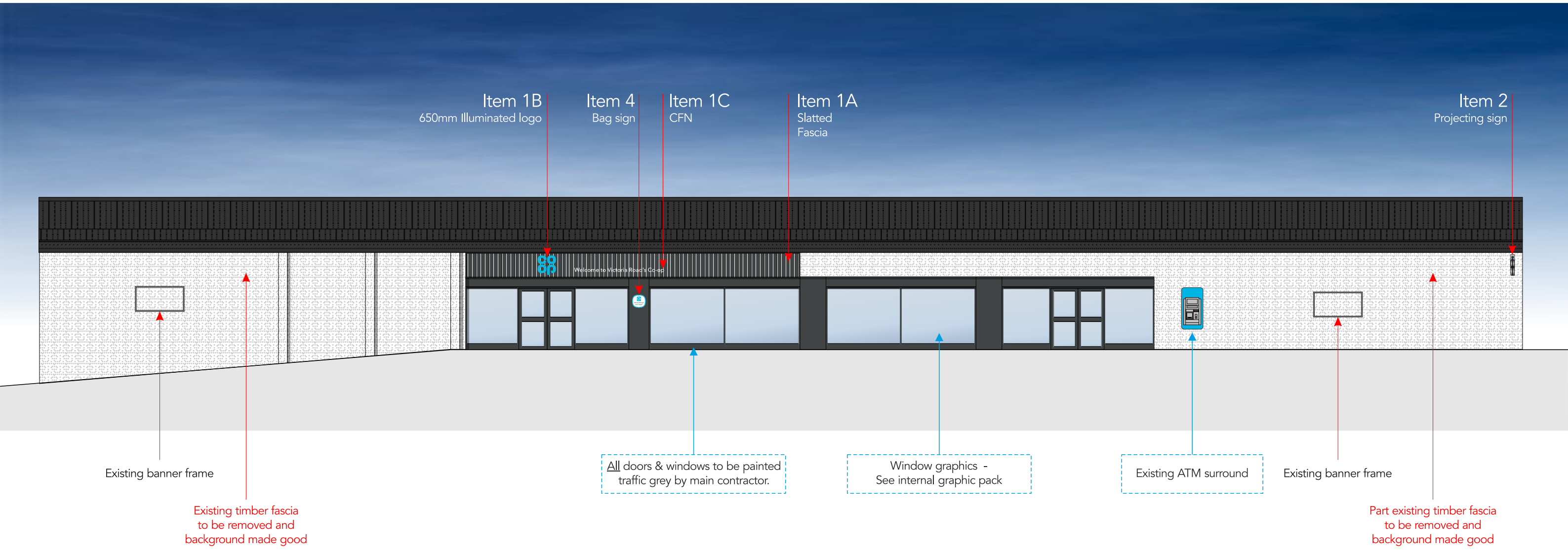




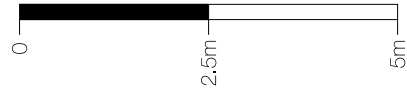
Scale 1:125 @ A3



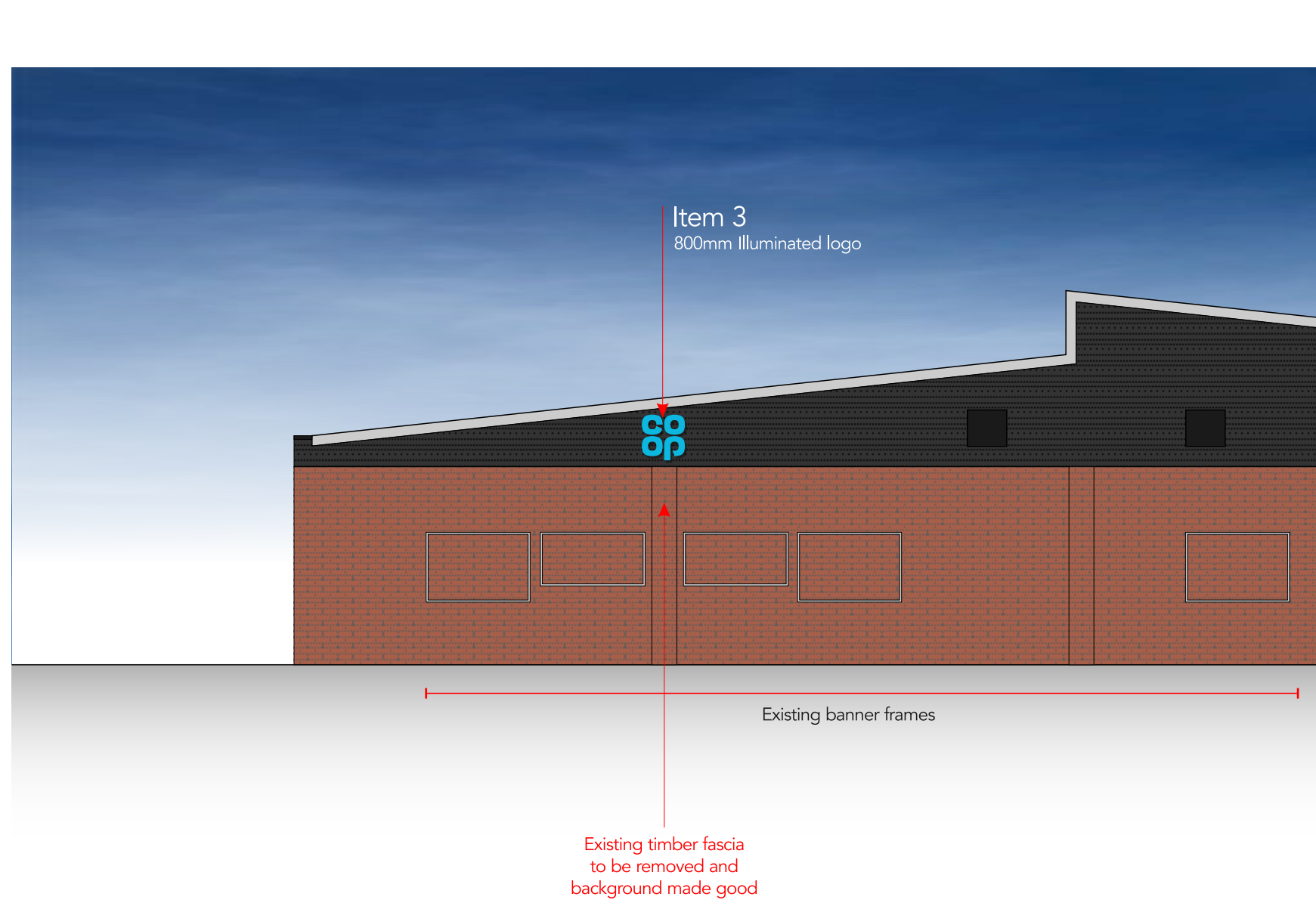
# Front Elevation



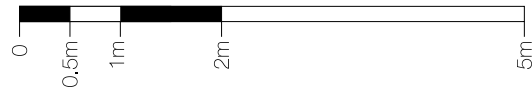
Scale 1:100@A3



# Side Elevation



Scale 1:75@A3



# Item 1A, 1B, 1C

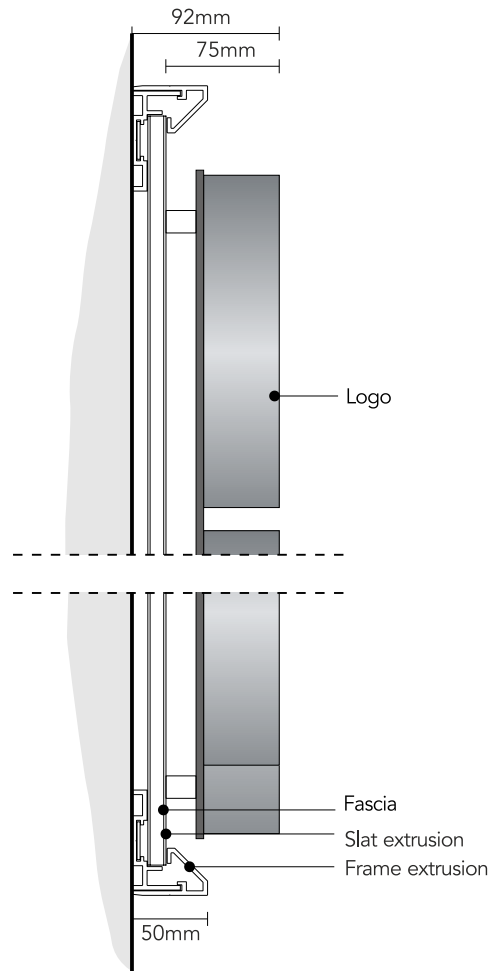
Specification



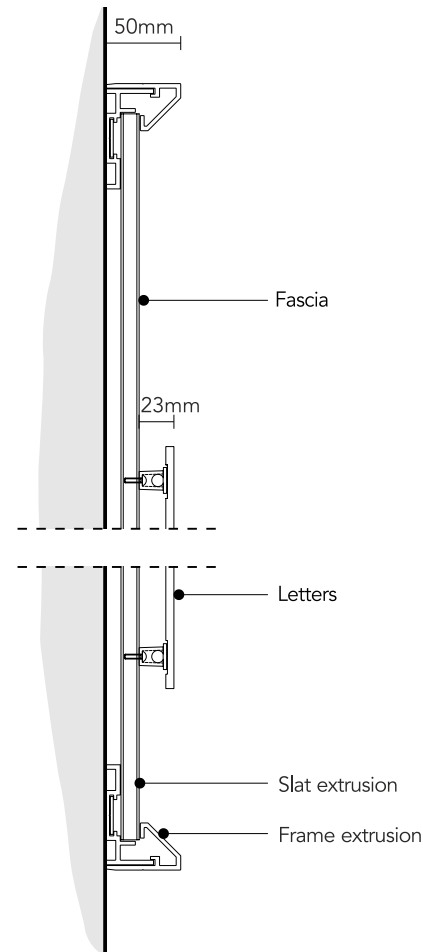
## Item 1A - scale 1:150 @ A3

Fascia constructed from individual Aluminium extrusions. Perimeter support extrusion fixed to the building substrate with suitable fixings, Aluminium vertical slats mounted and fixed to the support extrusion and trimmed around the perimeter with a chaffered trim. Slat and trim to be dark grey wood effect. **Height from FFL to underside of panel being: 2410mm**

Consult survey for manufacturing sizes

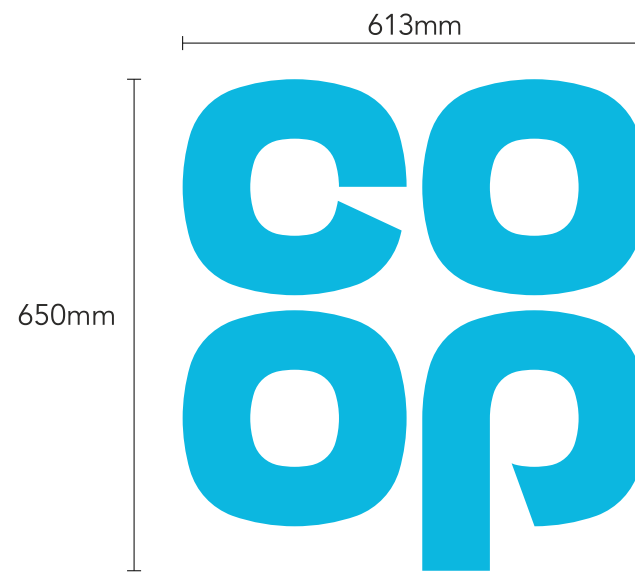
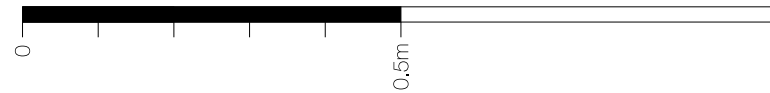


Section through Co-op  
scale 1:5 @ A3



Section through letters  
scale 1:5 @ A3  
**NON ILLUMINATED**

Scale 1:10@A3



## Item 1B - scale 1:10 @ A3

1no Single sided built up logo. Steel mounted plate with individual built-up face illuminated letters. Mounting plate to be 3mm mild steel fixed to building substrate with brass locator fixings.

3D built up letters to have aluminium sides, 75mm deep with 5mm Co-op blue acrylic faces. All visible edges, aluminium returns & mounting plate to be finished silver Ral 9006 60% gloss.

Letters internally illuminated by white LEDs, giving face illumination.

**Height from FFL to underside of panel being: 2510mm**

Scale 1:15@A3



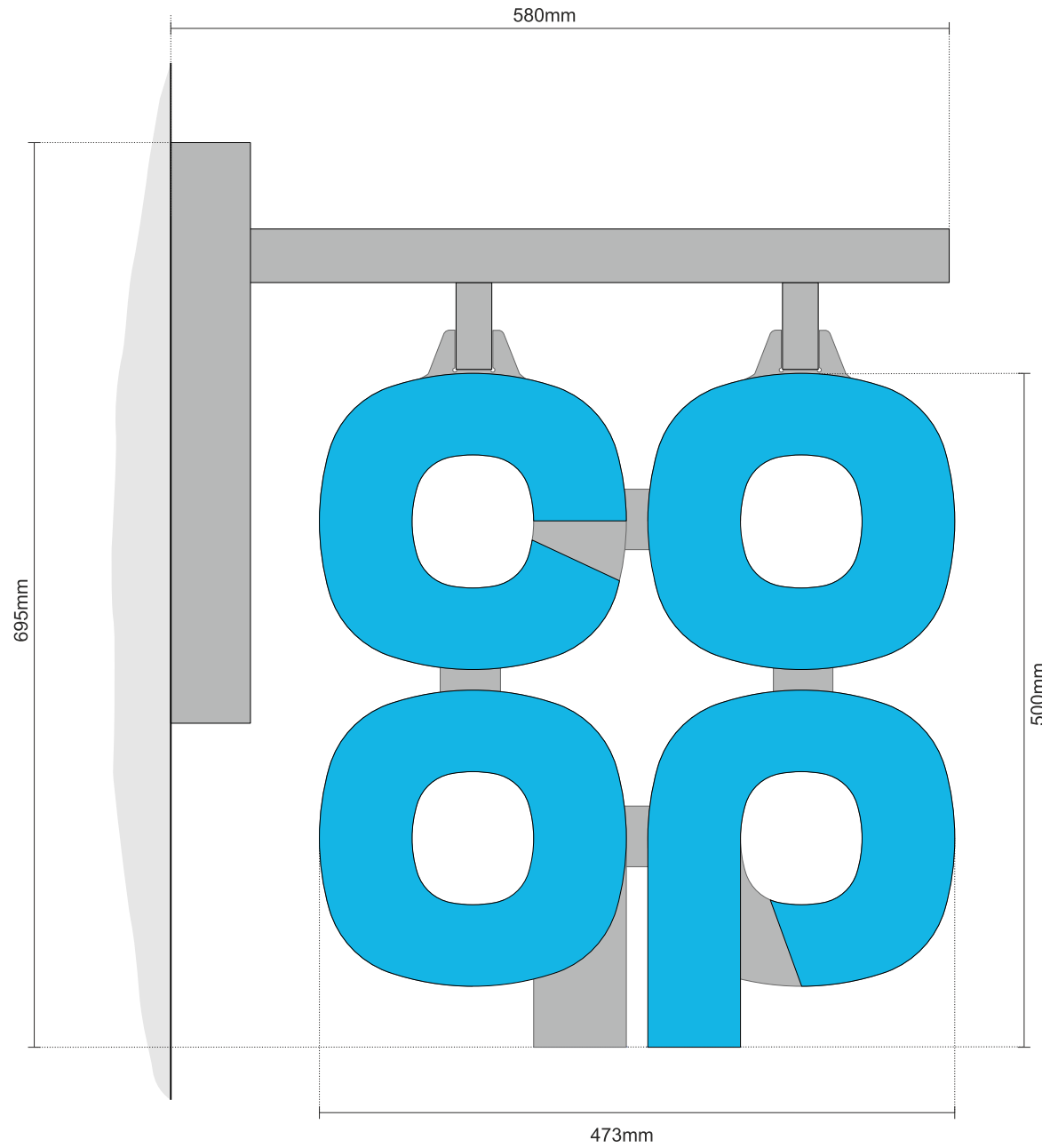
Store fascia name to be confirmed

All illuminated signs to have 5 amp switched fused spur behind sign location

## Item 1C - scale 1:15 @ A3

190mm text to match 650mm logo, from 5mm thick white Perspex 069 acrylic. Letters fitted to substrate with locator snap fixings. Non illuminated.

**Height from FFL to underside of panel being: 2570mm**



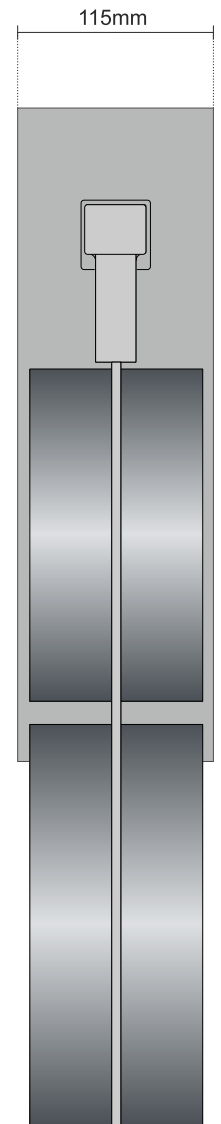
Face view - scale 1:5 @ A3

Item 2  
Projecting sign

Projection sign size 1 (500) internally illuminated built up letters on both sides. Individual 3D letters constructed from silver aluminium side returns and Co-op BLUE acrylic faces - faces only to illuminate.

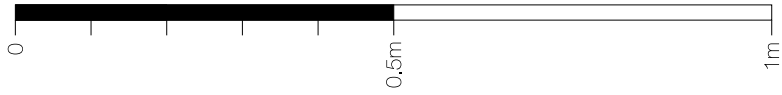
Fully welded 5mm Mild Steel wall mounting plate and support frame. Profile cut logo mounting plate from 5mm Mild Steel, welded to the hanging tubes. All visible steelwork to be finished silver to match RAL 9006 60% gloss. (CFP-P-FF0650/B)

Internally illuminated by means of white LED's

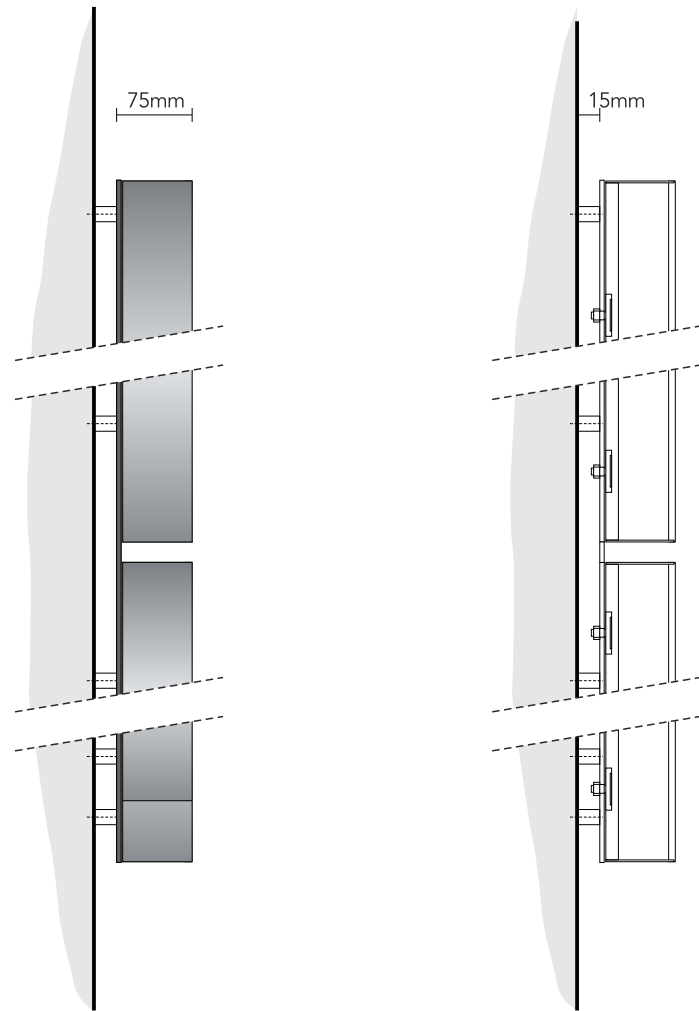
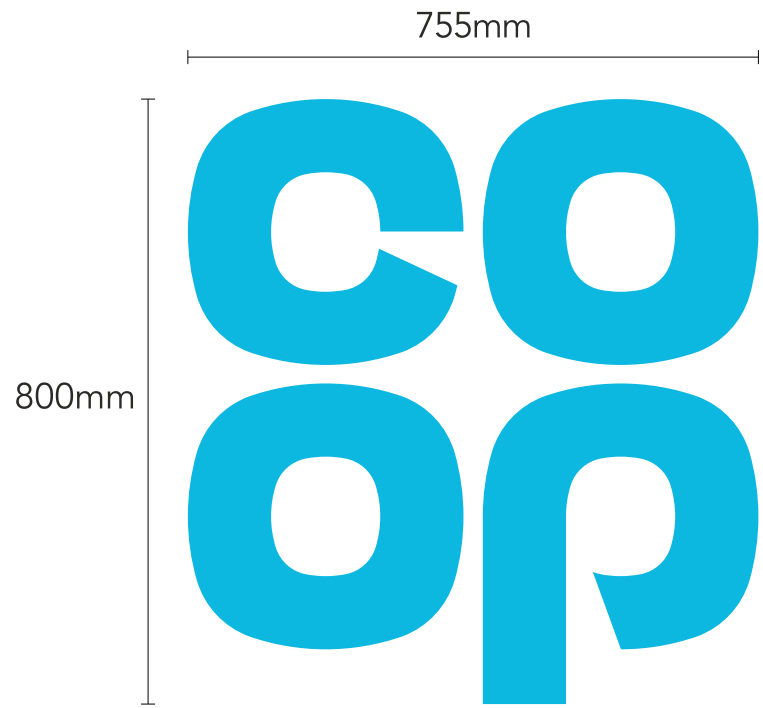


Side view - scale 1:5 @ A3

Scale 1:10@A3



Scale 1:5@A3



Item 3 - scale 1:10 @ A3  
2no Single sided built up logo.

Steel mounted plate with individual built-up face illuminated letters. Mounting plate to be 3mm mild steel fixed to cladding with brass locator fixings.

3D built up letters to have aluminium sides, 75mm deep with 5mm Co-op blue acrylic faces. All visible edges, aluminium returns & mounting plate to be finished silver Ral 9006 60% gloss.

Internally illuminated by white LEDs.

Note: Electrical feed to be supplied to sign position by main contractor prior to installation.

Consult survey for manufacturing sizes

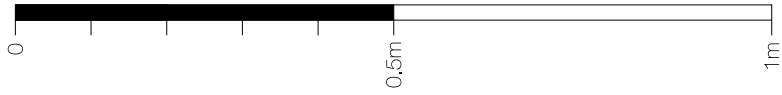
Height from FFL to underside of panel being: 3580mm

Logo Section - scale 1:5 @ A3

1no fitted to LHS elevation

1no fitted to RHS elevation





Item 4 - scale 1:10@ A3

1No. 450mm Dia. new bag sign.

Flat dibond panel with applied vinyl display, anti graffiti lacquered, rounded corners. Fixed to wall with suitable fixings.

Non illuminated.

Height from FFL to underside of sign being: 1400mm



Item 5 - scale 1:10@ A3

1No. 600mm (W) single sided car park sign

Flat aluminium panel with applied vinyl display, anti graffiti lacquered, rounded corners. Fixed to wall with suitable fixings

Non illuminated.

Height from FFL to underside of panel being: 1400mm



Item 6 - scale 1:10@ A3

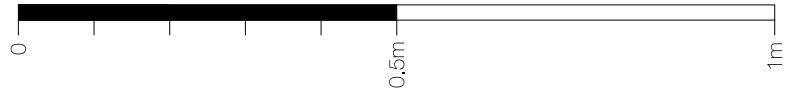
1No. 600mm (W) single sided car park sign

Flat dibond panel with applied vinyl display, anti graffiti lacquered, rounded corners. Panel fixed to wall by suitable means.

Non illuminated.

Height from FFL to underside of sign being: 1400mm





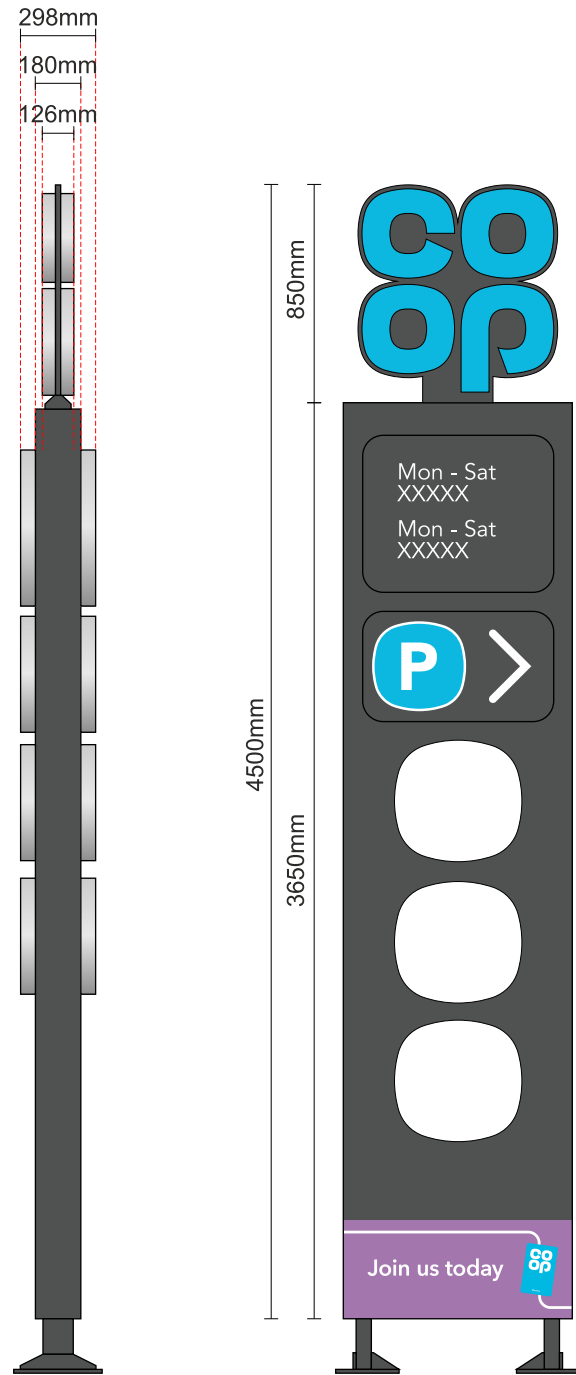
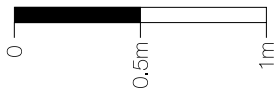
Item 7 - scale 1:10@ A3

3mm ACM with applied vinyl display & anti-graffitti laminate. Non-illuminated.

O/a size w 2305mm x h 425

Qty - 4no (for 2no shelters)

Scale 1:30@A3



Section view - scale 1:30@ A3

Face view - scale 1:30@ A3

### Item 9

1No. 4.5m totem with 800mm logo header.

800mm double sided built up logo: Steel mounting plate with individual built up letters. Mounting plate to be 3mm mild steel fixed to totem steelwork. 3D built up letters to have aluminium sides, 50mm deep with 5mm Co-op BLUE acrylic faces. All visible edges, aluminium returns & mounting plate to be finished Silver RAL 9006 60% gloss. Internally illuminated by white LED's

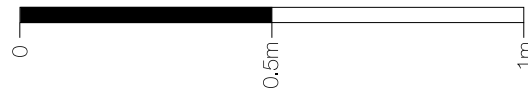
Opening hours, parking directional arrow and icon squarecels to be 3D built up units with aluminium sides, 60mm deep with illuminated faces. All visible edges, aluminium returns to be finished Silver RAL 9006 60% gloss. Internally illuminated by white LED's.

EXACT LOCATION TO BE AGREED  
Specification T.B.C  
Opening times and commodities T.B.C

# Item 9 & 10

Specification

Scale 1:15@A3



Section view

Face view - scale 1:15@ A3

Rear view

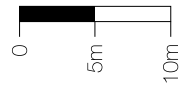
### Item 10

1No. 2m totem with 600mm logo header.

600mm double sided built up logo: Steel mounting plate with individual built up letters. Mounting plate to be 3mm mild steel fixed to totem steelwork. 3D built up letters to have aluminium sides, 50mm deep with 5mm Co-op BLUE acrylic faces. All visible edges, aluminium returns & mounting plate to be finished Silver RAL 9006 60% gloss. NON ILLUMINATED.

Opening hours, parking directional arrow and icon squarecels to be 3D built up units with aluminium sides, 60mm deep with illuminated faces. All visible edges, aluminium returns to be finished Silver RAL 9006 60% gloss. NON ILLUMINATED.

EXACT LOCATION TO BE AGREED  
Specification T.B.C  
Opening times and commodities T.B.C



- 1A** - Fascia
- 1B** - 650mm internally illuminated logo
- 1C** - CFN
- 2** - Projecting sign
- 3** - 800mm internally illuminated logo
- 4** - Bag sign
- 5** - Goods delivery
- 6** - CCTV
- 7** - Trolley graphics
- 9** - 4.5m Totem
- 10** - 2m totem

