

# CONSTRUCTION



FRONT ELEVATION



REAR ELEVATION

**MATERIAL LEGEND:**

①	Facing Brick: TBS - MYSTIQUE
②	Roof Tiles:CEMBRT JUTLAND BLUE/BLACK
③	Feature Brick:HOSKINS HIGHBURY
④	ALUTEC Fascia. Colour: RAL 9005
⑤	ALUTEC Gutters & Square Downpipes. Colour: HERITAGE BLACK
⑥	Front Doors Set: TBC
⑦	Garage Doors: N/A
⑧	Code 4 Lead Flashing
⑨	PVC-U Windows/Second Door. Colour: RAL 7016 Anthracite Grey.
⑩	GRP Canopy to manufacturers details
⑪	Brick Feature
⑫	Window cill brick feature

**GENERAL NOTES:**

Safety Glazing:  
Glazing in critical locations to comply with BS 6206 and Approved Document K. Critical locations for doors and adjacent side panels is between FFL and 1500mm high. Critical locations for windows is between FFL and 800mm high

**PART J - FLUE OUTLETS:**

Location of outlets from flues serving gas applications to conform with Approved Document Part J diagram 34, 35 & table to diagram 34.

All extracts outlets setting-out dimensions to be verified on site prior to installation

Contractor to ensure min 300mm distance between edge of flue and window opening as per Approved Document Part J Table to Diagram 34.

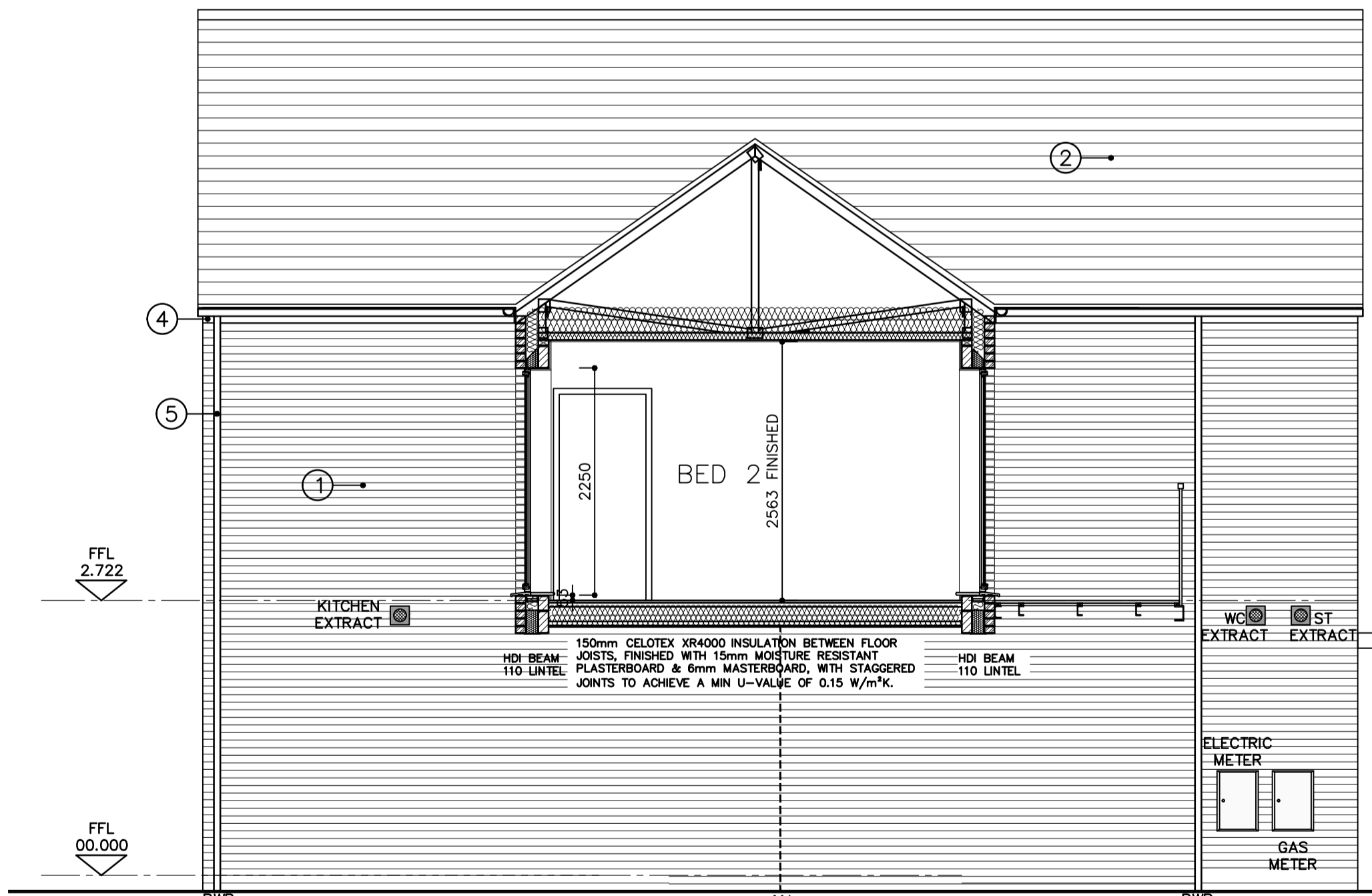
**KEY:**

Extract	☒
Movement Joints refer to eng specification	- - - - MJ
Level Threshold	LT
Safety Glazing	SG
Obscure Glazing	OG
Obscure & Safety Glazing	OSG
Emergency Escape Window	EEW

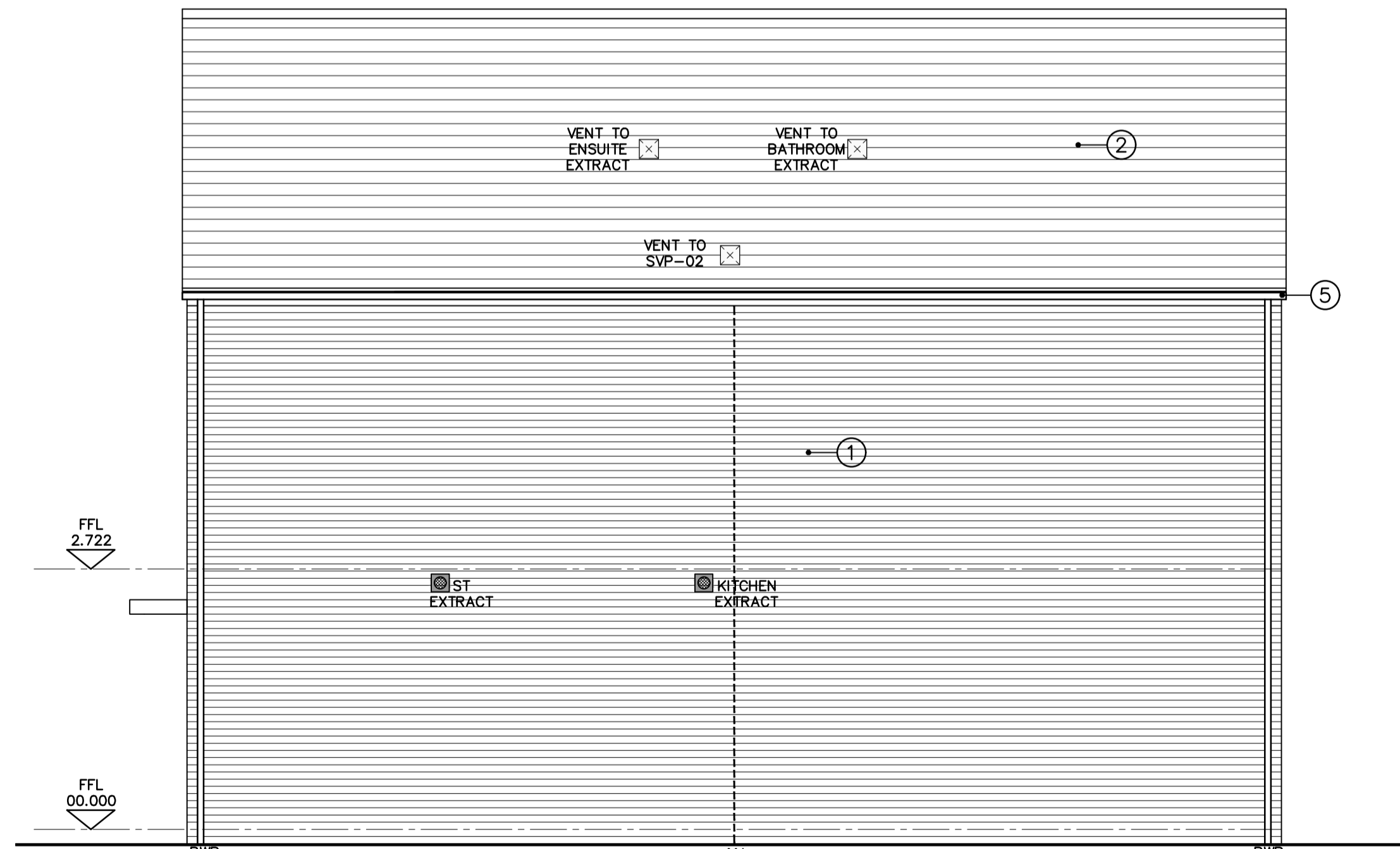
**WALL MOVEMENT JOINT NOTES:**

Wall movement joint to outer leaf, 10mm thick compressible joint filler - Aerofill 1 Grace construction products or equivalent specification sealant across joint, provide s/s wall ties at 450 c/c max. - Ancon ssp: 225mm long with debonding sleeve or equivalent specification debonding sleeve to be pulled back 10mm. Beyond tie to allow for masonry movement. s/s cavity wall ties positioned 225mm max from joint at 225mm c/c vertical.

Blockwork movement joints to be determined by the block manufacturer.



SIDE ELEVATION



PLOT 1 SIDE ELEVATION

REV: C5	WINDOW AMENDED TO UPVC.	14.12.20	DR
REV: C4	FEATURE BRICK AMENDED.	05.03.20	DR
REV: C3	DOOR STYLE AMENDED.	29.01.20	DR
REV: C2	MAIN BRICK & FEATURE BRICK AMENDED.	17.01.20	MC
REV: C1	CONSTRUCTION ISSUE.	04.12.19	DR
REV: T4	DOOR & WINDOW REFS AMENDED.	05.11.19	DR
REV: T3	MOVEMENT JOINTS ADDED.	10.10.19	DR
REV: T2	AMENDED TO CLIENT COMMENTS.	24.09.19	DR
REV: T1	TENDER ISSUE.	06.09.19	DR
REV: P1	PRELIMINARY ISSUE	23.08.19	DR



22 BANK STREET, LUTTERWORTH, LEICESTERSHIRE LE17 4AG  
01604 211498 - INFO@FUSILIER-DESIGN.COM

client **MEARS** MEARS NEW HOMES  
26 - 28 HYDE WAY, WELWYN GARDEN CITY,  
NEW HOMES HERTFORDSHIRE AL7 3LU.

site **QUEENSMEAD HOUSE,  
HIGH WYCOMBE.**

drawing title **HOUSE  
PLOTS 1 TO 5  
ELEVATIONS**

drawn date **01.08.19** scale **1:50 @A1**

drawing number **2700040 - A - H - 500** revision **C5**

**LOW INSULATION HAZARD**  
RESIDUAL RISKS

Risk of falling from roof work/exposed to high heat

1. All work on roof work/exposed to high heat to be carried out by trained personnel only.

2. All work on roof work/exposed to high heat to be carried out in accordance with the relevant safety regulations.

3. All work on roof work/exposed to high heat to be carried out in accordance with the relevant safety regulations.

4. All work on roof work/exposed to high heat to be carried out in accordance with the relevant safety regulations.

5. All work on roof work/exposed to high heat to be carried out in accordance with the relevant safety regulations.

6. All work on roof work/exposed to high heat to be carried out in accordance with the relevant safety regulations.

7. All work on roof work/exposed to high heat to be carried out in accordance with the relevant safety regulations.

8. All work on roof work/exposed to high heat to be carried out in accordance with the relevant safety regulations.

9. All work on roof work/exposed to high heat to be carried out in accordance with the relevant safety regulations.

10. All work on roof work/exposed to high heat to be carried out in accordance with the relevant safety regulations.