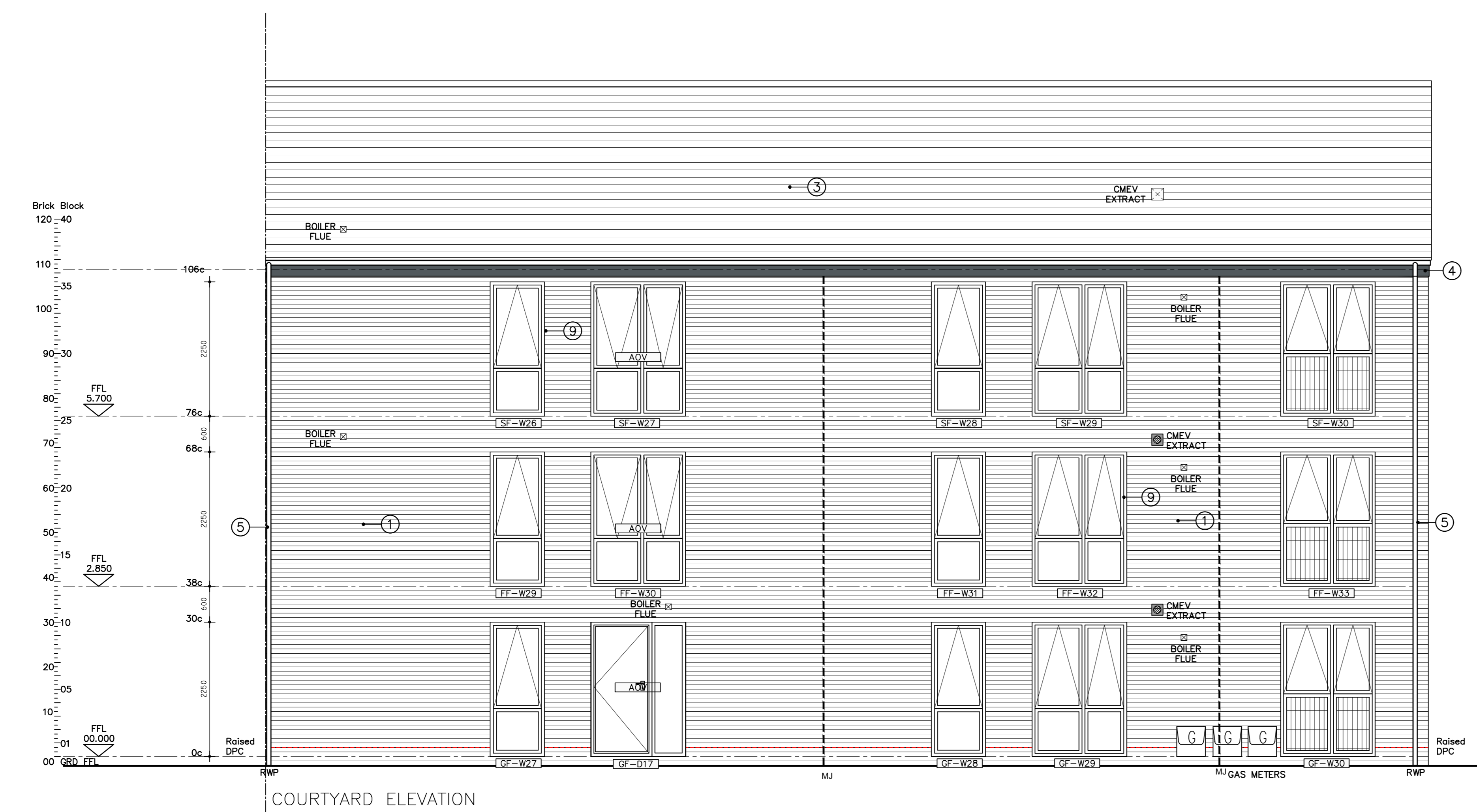
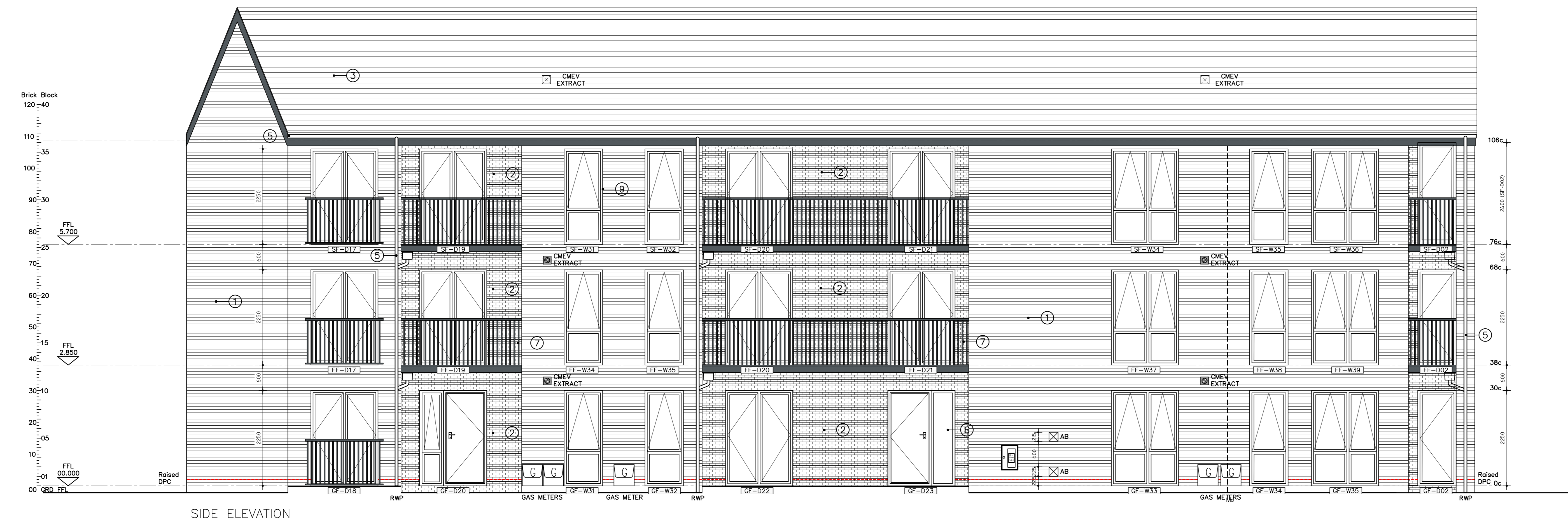
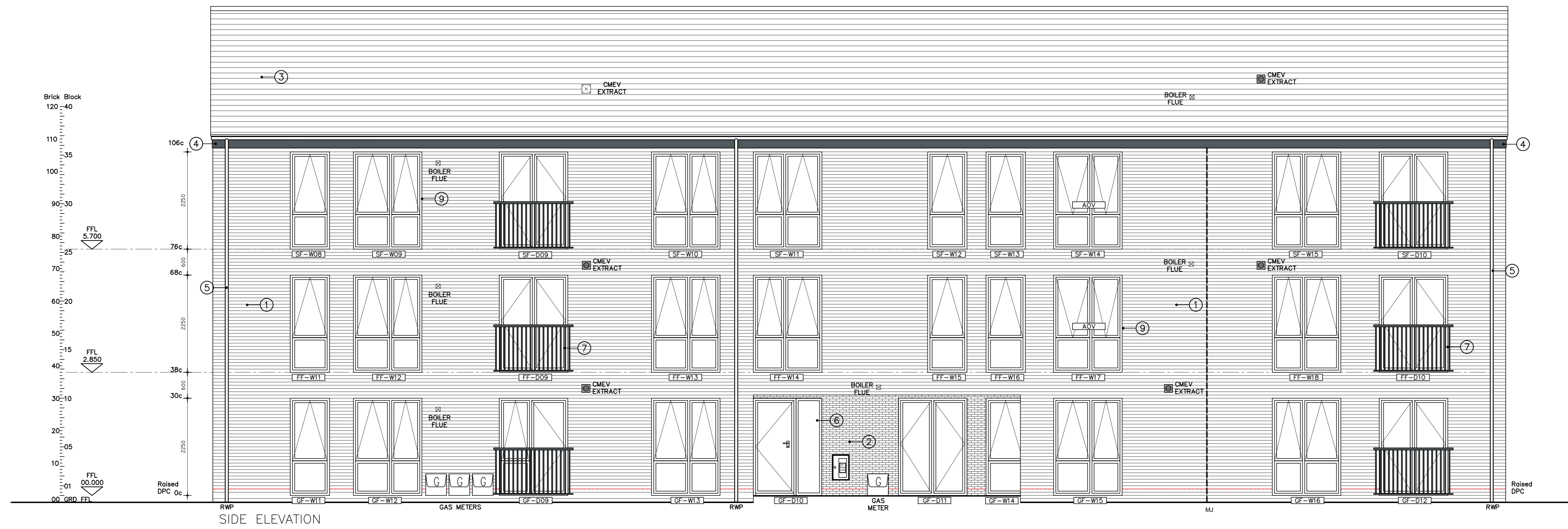


# CONSTRUCTION



- MATERIAL LEGEND:**
- ① Facing Brick: BS - WYTHIQUE
  - ② Feature Brick: HORSING HOBURRY
  - ③ Roof Tiles: COMBET ATLAND IN BLUE/BLACK
  - ④ ALUTEC Facade Colour: RAL 9005
  - ⑤ ALUTEC Gutters Square Downpipes Colour: HERITAGE BLACK
  - ⑥ Front Doors Sals: TBC
  - ⑦ Powder coated metal railings/Handrails Colour:RAL 7011
  - ⑧ Oak 4 Lead Flashing
  - ⑨ PVC-U Windows/Second Door Colour:RAL 7016 Anthracite Grey

- GENERAL NOTES:**
- Safety Glazing:** Glazing in critical locations to comply with BS 6206 and Approved Document K. Critical locations are those where glazing is exposed to external fire and 1000mm high. Critical locations for windows is between FFL and 800mm high.
- PART 2 - FLUE OUTLETS:** Location of outlets from flues serving gas appliances to comply with Approved Document Part 2 Diagram 24.20 & Table to Diagram 24. All extract outlets setting-out dimensions to be verified on site prior to installation. Contractor to ensure min 300mm distance between edge of flue and nearest opening in wall. Approved Document Part 2 Table to Diagram 24.

- KEY:**
- Movement joints refer to any specification
  - Level Threshold LT
  - Safety Glazing SG
  - Obscure Glazing OG
  - Obscure & Safety Glazing OSSG
  - Emergency Escape Window EEW

- WALL MOVEMENT JOINT NOTES:**
- Wall movement joints to be set at 10mm thick compressible joint filler - Kerolif 1. Grout construction products as approved specification unless otherwise stated. Provide 1/2" wall tie at 450 c/c max. - secure joint 225mm long with depending element in horizontal direction. Depending items to be pulled back 10mm. Beyond tie to allow for masonry movement. 1/2" cavity wall tie positioned 225mm from joint at 225mm c/c vertical.
  - Blockwork movement joints to be determined by the block manufacturer.

REV: C6	WINDOWS AMENDED TO UPVC.	14.12.20	DR
REV: C5	GF-D17 AMENDED.	25.11.20	DR
REV: C4	GF-D09 & D20 AMENDED TO CLIENT COMMENT. ABS ADDED TO VENT UNDER STAIRS VOID.	26.03.20	DR
REV: C3	FEATURE BRICK CHANGED.	05.03.20	DR
REV: C2	MAIN BRICK & FEATURE BRICK AMENDED.	17.01.20	MC
REV: C1	GF-D17 MADE AOV.	04.12.19	DR
REV: T3	FF-W17 & SF-W14 MADE AOV. MOVEMENT JOINTS ADDED.	10.10.19	DR
REV: T2	REVISED TO CLIENT COMMENTS.	24.09.19	DR
REV: T1	TENDER ISSUE.	06.09.19	DR
REV: P1	PRELIMINARY ISSUE	23.08.19	DR

22 BANK STREET, LUTTERWORTH, LEICESTERSHIRE LE17 4AG  
01509 211498 - INFO@FUSILIER-DESIGN.COM

client	<b>MEARS</b> MEARS NEW HOMES 26 - 28 HYDE WAY, WELWYN GARDEN CITY, HERTFORDSHIRE AL7 3UL.
site	<b>QUEENSMEAD HOUSE, HIGH WYCOMBE.</b>
drawing title	<b>APARTMENT BLOCK ELEVATIONS SHEET 2</b>
drawn	DR
date	01.08.19
scale	1:50 @A0
drawing number	2700040 - A - APT - 501
revision	C6

Small text block containing project details and contact information.