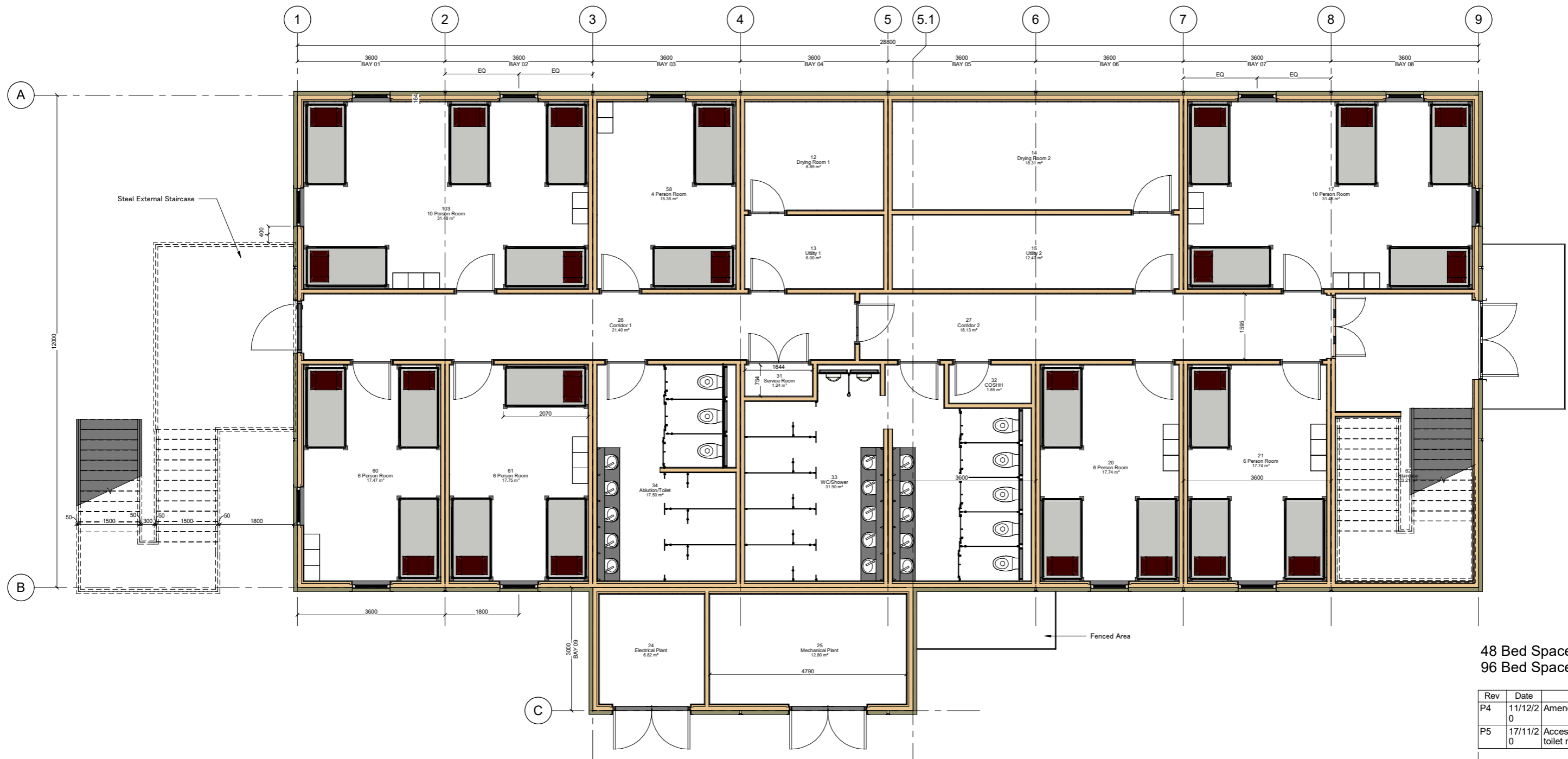


Appendix B

Development Proposals



1 Ground Floor Level
1 : 50

48 Bed Spaces On Ground Floor
96 Bed Spaces In Total

Rev	Date	Description	Rev by
P4	11/12/20	Amended to comments	KS
P5	17/11/20	Accessible room and toilet removed	KS

PROJECT	Pirbright Accommodation Block
TITLE	Ground Floor Plan
CLIENT	Landmarc



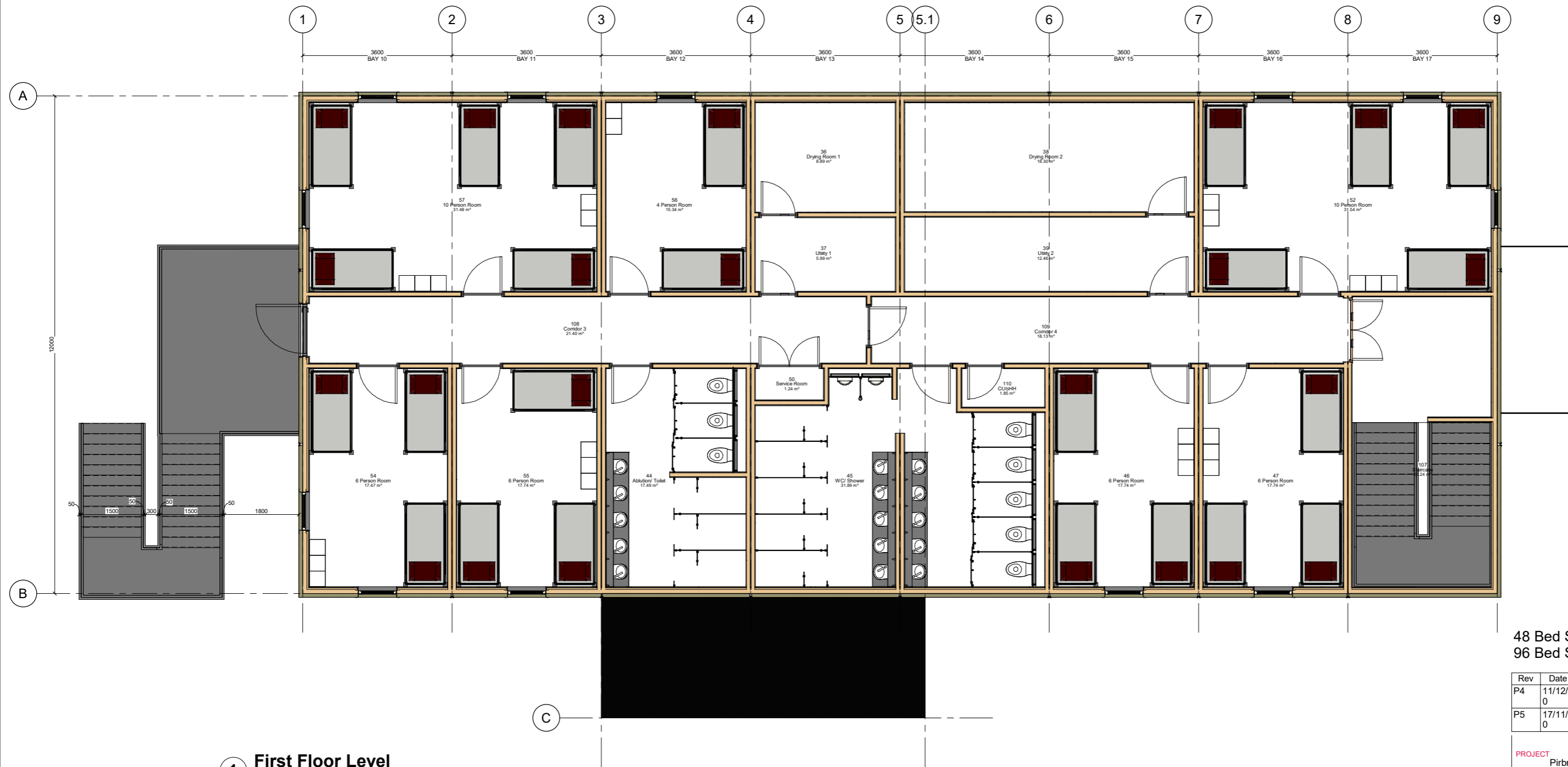
DATE	SCALE (@A1)	DRAWN:	CHECKED:
10/23/20	1 : 50	KS	-

DRAWING NO.
Project - Origin - Volume - Level - File Type - Role - Number
A124- R10- PB- 00- DR- W- 0006

REVISION	SUITABILITY
P5	P5

THIS DRAWING AND DESIGN IS THE SOLE PROPERTY AND COPYRIGHT OF REDS10 MANUFACTURING LIMITED. AND MUST NOT BE COPIED, LOANED OR COMMUNICATED, IN WHOLE OR PART, TO ANY THIRD PARTY WITHOUT CONSENT FROM THE COMPANY.
DO NOT SCALE. IF IN DOUBT ASK.
ALL MEASUREMENTS IN MM UNLESS SPECIFIED

PLOT DATE: 17/11/2020 14:02:27
 FILE PATH: Z:\01\Paper\01\Equipment\1 Live\Enquiries\A124\Accommodation\Printing\A124- R10- PB- 00- DR- W- 0006.dwg



1 First Floor Level
1 : 50

48 Bed Spaces On First Floor
96 Bed Spaces In Total

Rev	Date	Description	Rev by
P4	11/12/20	Amended to comments	KS
P5	17/11/20	Accessible room and toilet removed	KS

PROJECT	Pirbright Accommodation Block
TITLE	First Floor Plan
CLIENT	Landmarc



DATE	SCALE (@A1)	DRAWN:	CHECKED:
10/23/18	1 : 50	KS	-

DRAWING NO.
Project - Origin - Volume - Level - File Type - Role - Number
A124- R10- PB- 01- DR- W- 0007

REVISION	SUITABILITY
P5	P5

THIS DRAWING AND DESIGN IS THE SOLE PROPERTY AND COPYRIGHT OF REDS10 MANUFACTURING LIMITED, AND MUST NOT BE COPIED, LOANED OR COMMUNICATED, IN WHOLE OR PART, TO ANY THIRD PARTY WITHOUT CONSENT FROM THE COMPANY.
DO NOT SCALE, IF IN DOUBT ASK.
ALL MEASUREMENTS IN MM UNLESS SPECIFIED.

PLOT DATE: 17/11/2020 14:02:22
 FILE PATH: Z:\01 Papers\01 Equipment\01 Live Equipment\124400 Accommodation\Plan\01-DR-W-0007.dwg

Appendix C

BGS Selected Borehole Records

Soil Mechanics		BOREHOLE No.3E					
Equipment & Methods Cable tool boring, 150mm diameter to base.		Location No. 7505/26 Location ELIZABETH BARRACKS-JRSLA					
Carried out for Property Services Agency		Ground Level 76.00 m A.O.D.		Coordinates 140 E 220 N			
		Date 06.06.90 to 06.06.90					
Description	Reduced Level	Legend	Depth (Thick)	Samples/Tests			Field Records
				Depth	Sample Type	Test	
Brown flinty sand. Topsoil. (Foreman's description)	76.00 75.75	o o o	(0.25) 0.25 (0.30)				
Grey mottled light brown sand and gravel. (Foremans Description)	75.45	o o o	0.55	0.50 - 1.00	B 1		
Dense orange brown slightly clayey becoming clayey locally silty sandy angular to rounded flint GRAVEL with rare cobbles.	74.20	o o o	(1.25)	1.20 - 1.65	B 2	C N-42	14,17/11,12,9,10
with rare to occasional angular to rounded fine ironstone and flint gravel		x	1.80	1.80 - 2.25	D 3	S N-20	1,2/3,4,6,7
		x		2.30 - 2.80	B 4		
		x		2.80 - 3.25	D 5	S N-24	2,3,5,5,6,8
		x		3.30 - 3.80	B 6		
		x		3.80 - 4.25	D 7	S N-37	2,4/7,8,9,13
		x		4.30 - 4.80	B 8		
		x		4.80 - 5.25	D 9	S N-42	3,6/8,10,11,13
Medium dense becoming dense below 3.80m yellowish brown mottled orange and light green slightly silty locally silty fine to medium SAND with rare fine gravel size pockets and lenses of black silty fine sand.		x	(8.45)	5.30 - 5.80	B 10		
with rare partings of pink / grey clay		x		5.80 - 6.25	D 11	S N-46	3,7/9,10,12,15
		x		6.30 - 6.80	B 12		
		x		6.80 - 7.25	D 13	S N-46	2,5/7,9,13,17
with abundant to occasional partings of clay		x		7.30 - 7.80	B 14		
		x		7.80 - 8.25	D 15	S N-47	5,8/10,11,11,15
		x		8.30 - 8.80	B 16		
		x		8.80 - 9.25	D 17	S N-37	2,5/7,8,10,12
		x		9.30 - 9.80	B 18		
		x		9.80 - 10.25	D 19	S N-39	

Remarks

Notes:
Materials are described in accordance with Appendices. For explanation of symbols and abbreviations see Fig. 1. (c) Soil Mechanics
All depths and reduced levels in metres. Thicknesses given in brackets in depth column.

Logged by AM
Scale 1:50
Fig. 4

27.07.90/11.34 (Ver 4.1.2B)

Soil Mechanics		BOREHOLE No.3E Sheet 2 of 2						
Equipment & Methods As sheet 1		Location No. 7505/26 Location SU 95 NW 44 ELIZABETH BARRACKS-JRSLA 9225 5685						
Carried out for Property Services Agency		Ground Level Coordinates Date As sheet 1						
Description	Reduced Level	Legend	Depth (Thick)	Samples/Tests			Field Records	
				Depth	Sample Type No.	Test		
Dense yellowish brown slightly silty SAND. (As sheet 1.) BOREHOLE ENDS AT 10.25 m.	65.75	x	(8.45 10.25)	9.80 - 10.25	D	19	S N-39	2,5/8,8,11,12
Water Level Observations During Boring								
Date	Time	Depth of Hole (m)	Depth of Casing (m)	Depth to Water (m)	Remarks			
1990 06.06	1500	10.25	8.70	DRY	End of borehole			
Remarks							Logged by AM Scale 1:50 Fig. 4	
Notes: Materials are described in accordance with Appendices. For explanation of symbols and abbreviations see Fig. 1. (c) Soil Mechanics All depths and reduced levels in metres. Thicknesses given in brackets in depth column. 27.07.90/11.34 (Ver 4.1.28)								

Sampling		Properties			Strata						
Depth	Type	Strength kN/m ²	w %	SPT N	Description	Depth	Level	Legend			
					TOPSOIL over earth and rubble Fill (Drillers description)	G.L.	71.30				
0.80	D		14			0.80	70.50				
1.00-1.45	U(50)		20		Orange brown and light grey, clayey silty fine to medium SAND, with occasional flint gravel.						
1.45	D										
2.00-2.45	U(50)				Firm to stiff orange brown and grey green very fine to medium sandy silty clay band at 1.45m						
2.45	D					2.40	68.90				
3.00-3.45	SD			31	Dense light brown clayey silty fine to medium SAND						
3.50-3.80	B										
4.00-4.80	SD			35	Silty clay pockets <3mm below 4.00m						
4.50-4.80	B										
5.00-5.45	SD			38							
5.80-6.20	B										
6.60-7.05	SD			42	Dense brown silty fine to medium occasionally coarse SAND	6.00	65.30				
7.30	D				band, very sandy silty clay at 7.30m						
8.10-8.55	SD			36							
9.00-9.50	B					9.00	62.30				
9.60-10.05	SD			36	Dense, light brown and grey brown silty fine to medium SAND						
					End of Borehole	10.05	61.25				
Drilling					Ground Water						
Type	From	To	Size	Fluid	Struck	Behaviour	Sealed	Date	Hole	Cased	Water
Shell and Auger	G.L.	10.05	0.15	-	7.30	Rose to 7.00m		5.3.86	Nil	Nil	Nil
								5.3.86	10.05	9.60	7.00
Remarks											
Chiselled between 0.20m and 0.40m (20 minutes)											
Standpipe installed to 9.50m											
Borehole Record					Project				Contract S3022/57		
exploration associates					Property Services Agency Pirbright - Elizabeth Barracks Junior Ranks Accommodation				Borehole F		
					Sheet 1 of 1						

FY1

