

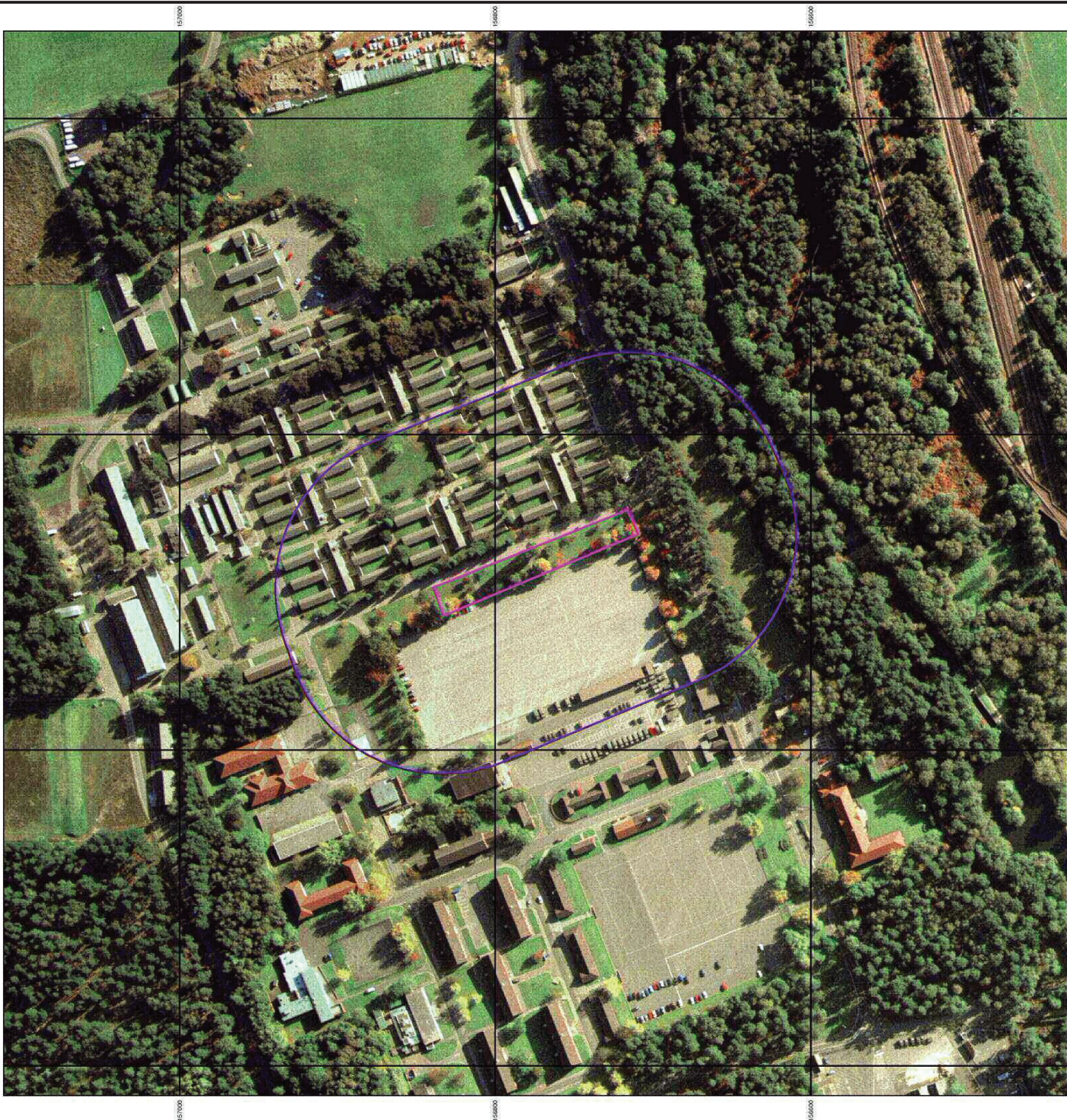




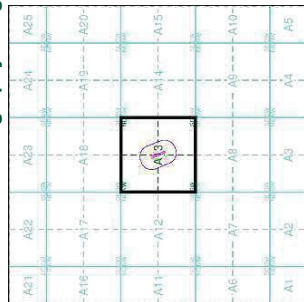


**TWEEDIE EVANS CONSULTING**  
**Historical Aerial Photography**  
**Published 1999**

This aerial photography was produced by Geomapping, these vertical aerial photographs provide a seamless, full colour survey of the whole of Great Britain



**Historical Aerial Photography - Segment A13**



**Order Details**

Order Number: 22137301\_1\_1  
 Customer Ref: 1909006.001  
 National Grid Reference: 492320, 156770

Site: A  
 Site Area (Ha): 0.24  
 Search Buffer (m): 100

**Site Details**

Brunswick Camp, Pirbright, GU24 0QQ



Tel: 0844 844 9952  
 Fax: 0844 844 9951  
 Web: www.envirocheck.co.uk



# Historical Mapping Legends

## Ordnance Survey County Series 1:10,560



## Ordnance Survey Plan 1:10,000


BP, BS	Boundary Post or Stone	Pol Sta	Police Station
Ch	Church	PO	Post Office
CH	Club House	PC	Public Convenience
F E Sta	Fire Engine Station	PH	Public House
FB	Foot Bridge	SB	Signal Box
Fn	Fountain	Spr	Spring
GP	Guide Post	TCP	Telephone Call Box
MP	Mill Post	TCP	Telephone Call Post
MS	Mill Stone	W	Well

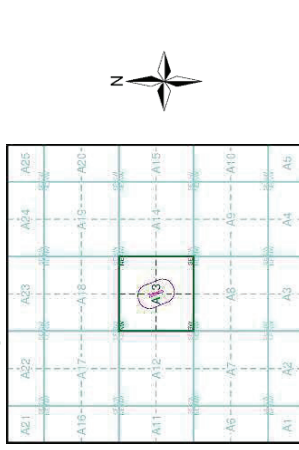
## 1:10,000 Raster Mapping




## TWEEDIE EVANS CONSULTING Historical Mapping & Photography included:

Mapping Type	Scale	Date	Pq
Survey	1:10,560	1873	2
Hampshire & Isle Of Wight	1:10,560	1874	3
Survey	1:10,560	1897	4
Survey	1:10,560	1920	5
Survey	1:10,560	1938	6
Historical Aerial Photography	1:10,560	1947	7
Ordnance Survey Plan	1:10,000	1961	8
Ordnance Survey Plan	1:10,000	1975	9
10K Raster Mapping	1:10,000	1999	10
10K Raster Mapping	1:10,000	2006	11
VectorMap Local	1:10,000	2019	12

## Historical Map - Slice A



## Order Details

Order Number: 22137301\_1\_1  
 Customer Ref: 1909006.001  
 National Grid Reference: 492320, 156770  
 Slice: A  
 Site Area (Ha): 0.24  
 Search Buffer (m): 1000

## Site Details

Brunswick Camp, Pirbright, GU24 0QQ

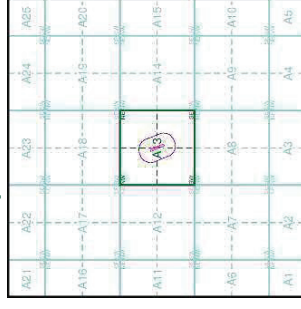


The historical maps shown were reproduced from maps predominantly held at the Ordnance Survey, Warley and Scotland in the 1940's. In 1854 the 1:10,560 maps were published. The published data on these maps are often some years later than the surveyed date. Before 1938, all OS maps were based on the Cassini Projection, with independent surveys in outlying county or group of counties giving rise to significant inaccuracies in outlying areas. In the late 1940's, a Provisional Edition was produced, which updated the 1:10,560 mapping from a number of sources. The maps appear unfinished - with all military camps and other strategic sites removed. These maps were initially overprinted with the National Grid. In 1970, the first 1:10,000 maps were produced using the Transverse Mercator Projection. The revision process continued until recently, with new editions appearing every 10 years or so for urban areas.

**Map Name(s) and Date(s)**

01600	1873
1:10,560	
02300	1873
1:10,560	

**Historical Map - Slice A**

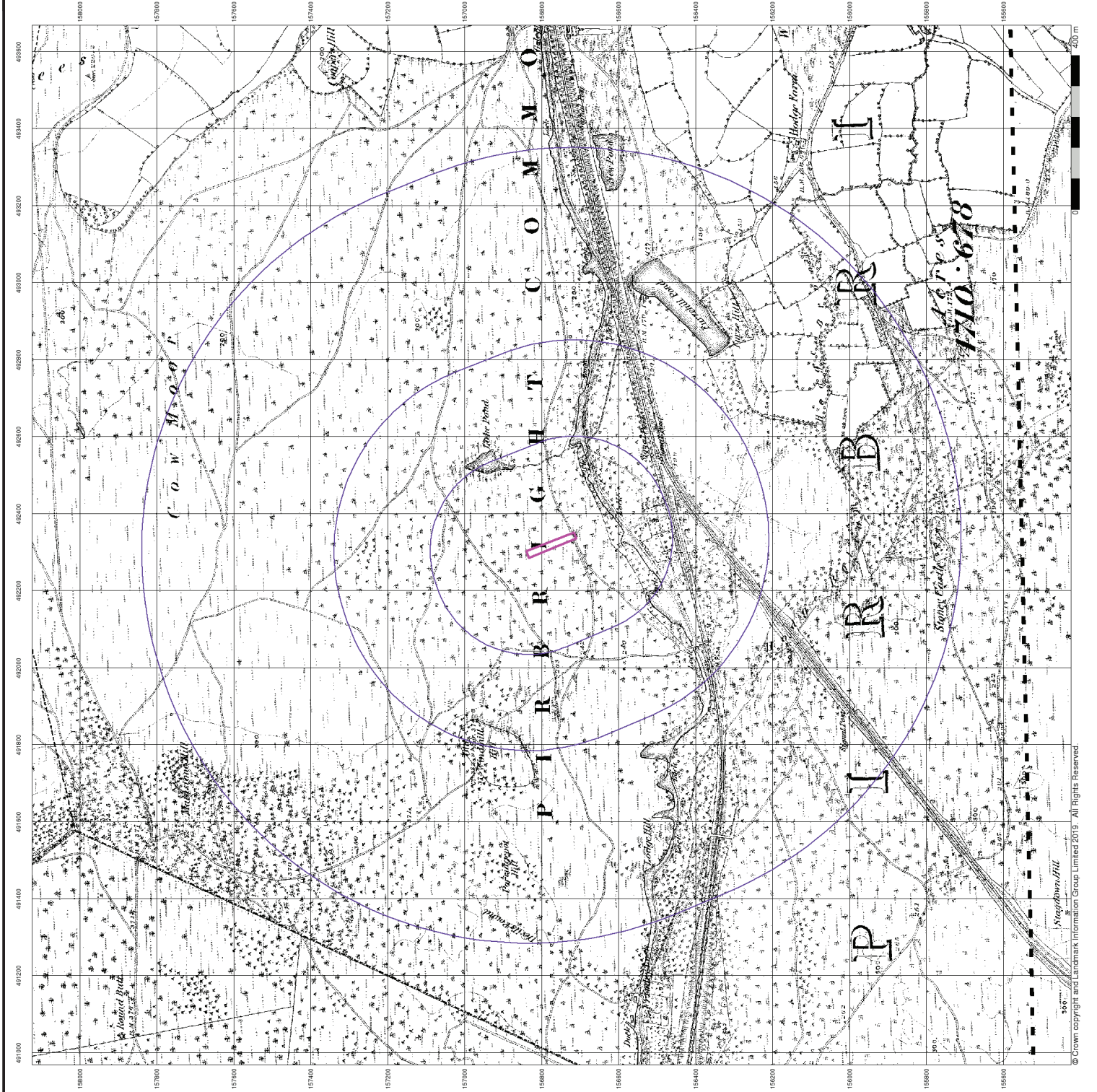


**Order Details**

Order Number: 22137301\_1\_1  
Customer Ref: 1909006.001  
National Grid Reference: 492320, 156770  
Slice: A  
Site Area (Ha): 0.24  
Search Buffer (m): 1000

**Site Details**

Brunswick Camp, Pirbright, GU24 0QQ













**Published 1920**

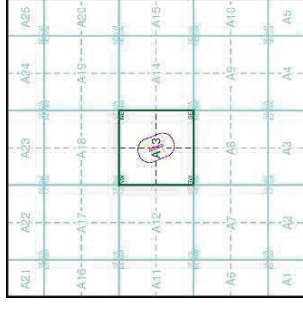
**Source map scale - 1:10,560**

The historical maps shown were reproduced from maps predominantly held at the Ordnance Survey, Warley and Scotland in the 1940's. In 1854 the Ordnance Survey was established and the first maps were used to update the 1:10,560 maps. The published data on these maps are often some years later than the surveyed date. Before 1938, all OS maps were based on the Cassini Projection, with independent surveys in outlying county or group of counties giving rise to inaccuracies in outlying areas. In the late 1940's, a Provisional Edition was produced, which updated the 1:10,560 mapping from a number of sources. The maps appear unfinished - with all military camps and other strategic sites removed. These maps were initially overprinted with the National Grid. In 1970, the first 1:10,000 maps were produced using the Transverse Mercator Projection. The revision process continued until recently, with new editions appearing every 10 years or so for urban areas.

**Map Name(s) and Date(s)**

01BSW	1920
1:10,560	
023NW	1920
1:10,560	

**Historical Map - Slice A**

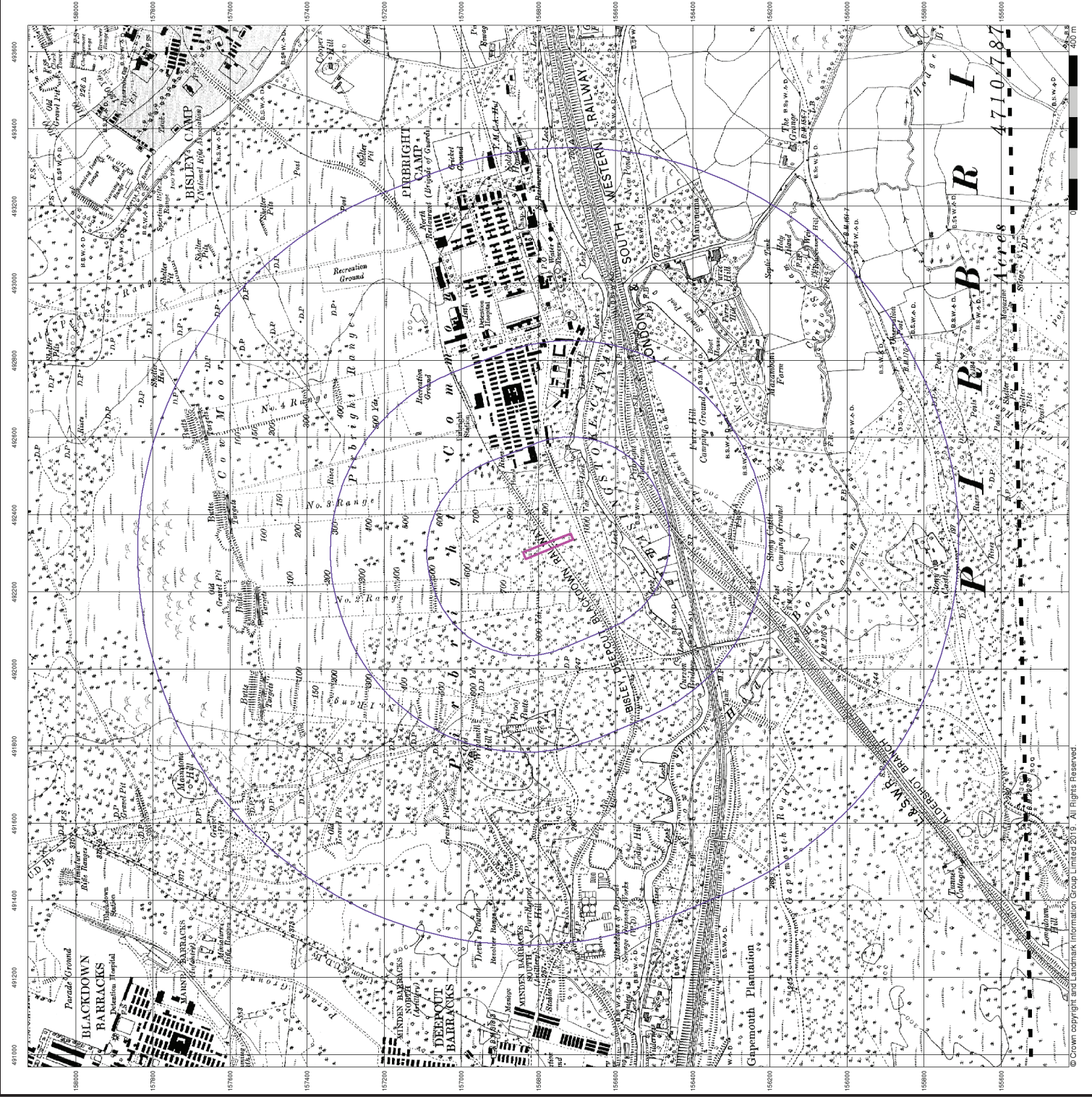


**Order Details**

Order Number: 221372301\_1\_1  
 Customer Ref: 1909006.001  
 National Grid Reference: 492320, 156770  
 Slice: A  
 Site Area (Ha): 0.24  
 Search Buffer (m): 1000

**Site Details**

Brunswick Camp, Pirbright, GU24 0QQ



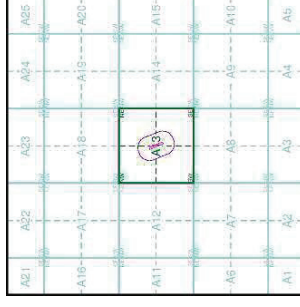


The historical maps shown were reproduced from maps predominantly held at the Ordnance Survey, Warley and Scotland in the 1940's. In 1854 the Ordnance Survey was established and the first maps were used to update the 1:10,560 maps. The published data on these maps are often some years later than the surveyed date. Before 1938, all OS maps were based on the Cassini Projection, with independent surveys in outlying county or group of counties giving rise to inaccuracies in outlying areas. In the late 1940's, a Provisional Edition was produced, which updated the 1:10,560 mapping from a number of sources. The maps appear unfinished - with all military camps and other strategic sites removed. These maps were initially overprinted with the National Grid. In 1970, the first 1:10,000 maps were produced using the Transverse Mercator Projection. The revision process continued until recently, with new editions appearing every 10 years or so for urban areas.

**Map Name(s) and Date(s)**

01BSW	1938
1:10,560	
023NW	1938
1:10,560	

**Historical Map - Slice A**

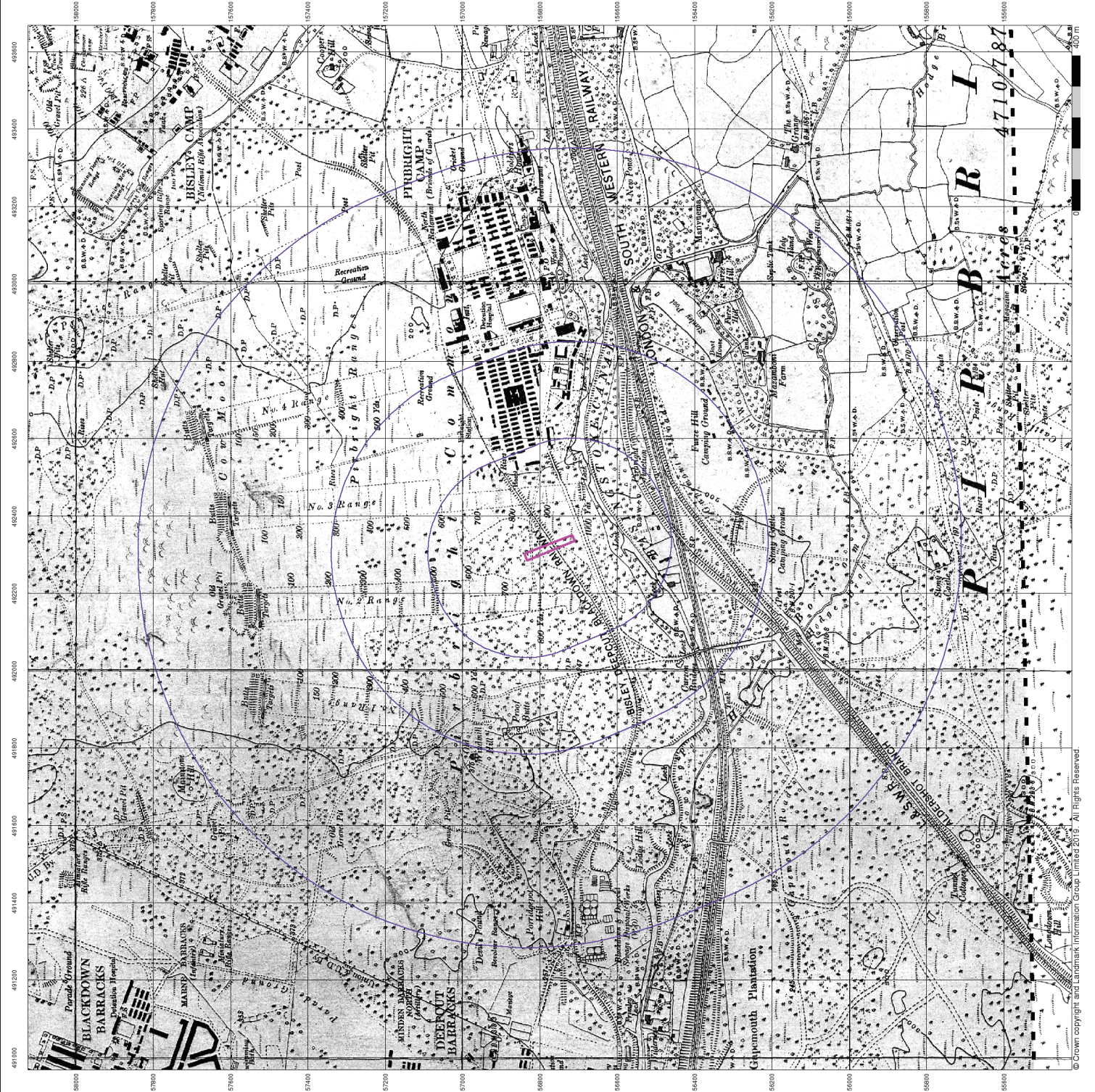


**Order Details**

Order Number: 221372301\_1\_1  
 Customer Ref: 1909006.001  
 National Grid Reference: 492320, 156770  
 Slice: A  
 Site Area (Ha): 0.24  
 Search Buffer (m): 1000

**Site Details**

Brunswick Camp, Pirbright, GU24 0QQ







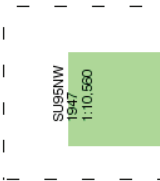
**TWEEDIE EVANS CONSULTING**  
**Historical Aerial Photography**  
**Published 1947**

**Source map scale - 1:10,560**

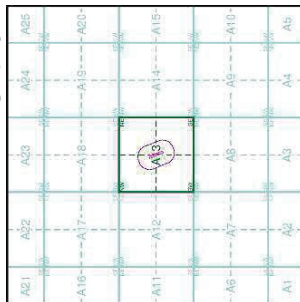
The Historical Aerial Photos were produced by the Ordnance Survey at a scale of 1:1,250 and 1:10,560 from Air Force photography. They were prepared by an Ordnance Survey team in 1944 and 1951 as a result of the preparation of conventional maps. Due to post-war security measures, the preparation of conventional maps in the 1950s meant that every photograph was rechecked for potentially unsafe information with security sites replaced by fields or clouds. The original editions were withdrawn and only later made available after a period of fifty years although due to the accuracy of the editing, without viewing both revisions it is not easy to spot the edits. Where available Landmark have included both revisions.

© Landmark Information Group and/or Data Suppliers 2019.

**Map Name(s) and Date(s)**



**Historical Aerial Photography - Slice A**



**Order Details**

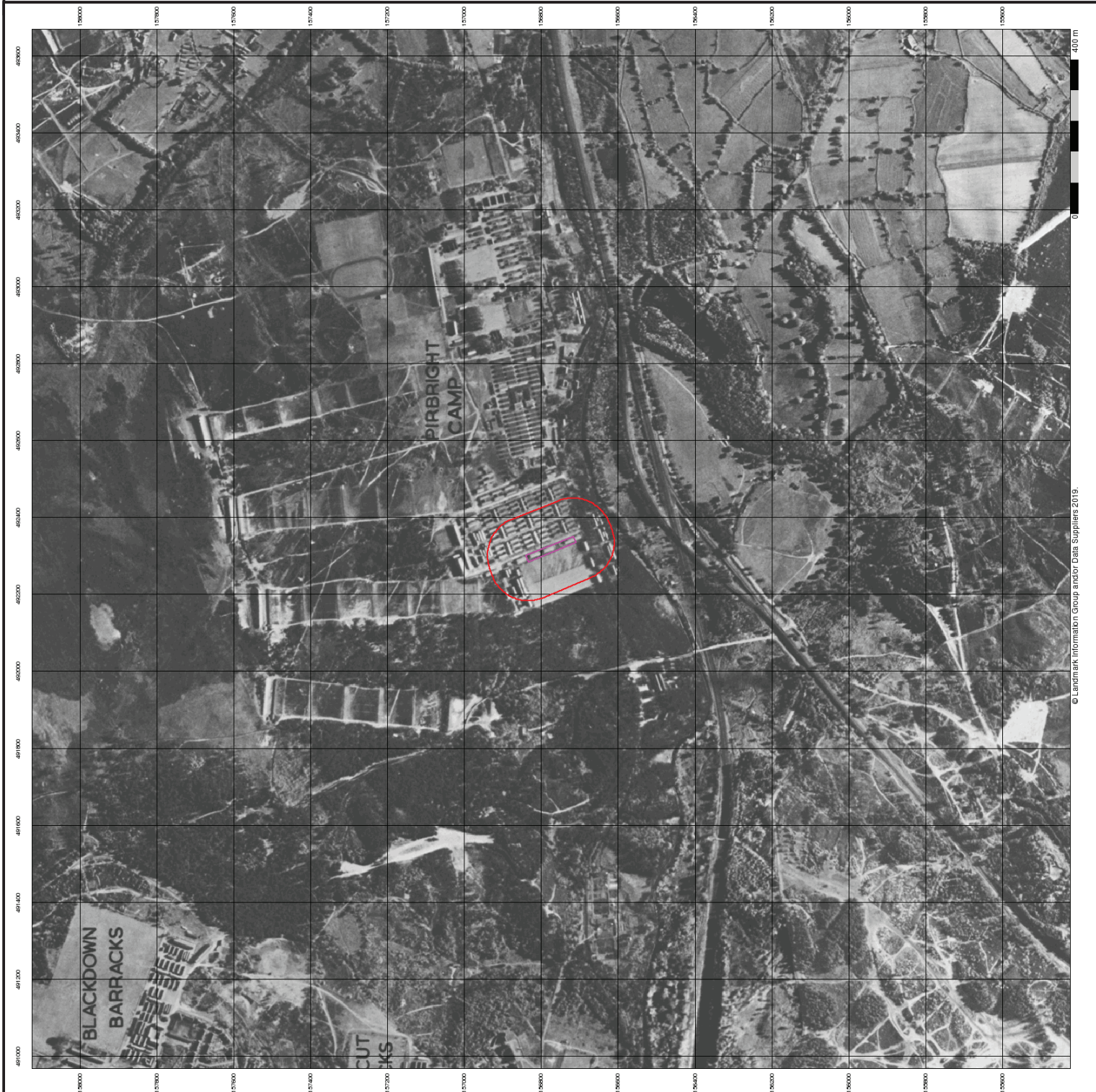
Order Number: 221372301\_1\_1  
 Customer Ref: 1909006.001  
 National Grid Reference: 492320, 156770  
 Slice: A  
 Site Area (Ha): 0.24  
 Search Buffer (m): 1000

**Site Details**

Brunswick Camp, Pirbright, GU24 0QQ



Tel: 0844 844 9952  
 Fax: 0844 844 9951  
 Web: www.envirocheck.co.uk





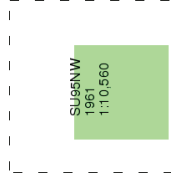


**TWEEDIE EVANS CONSULTING**  
**Ordnance Survey Plan**  
**Published 1961**

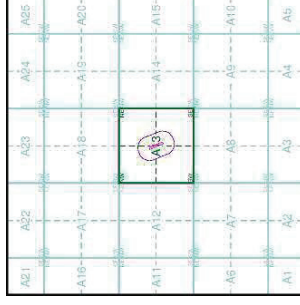
**Source map scale - 1:10,000**

The historical maps shown were reproduced from maps predominantly held at the Ordnance Survey, Great Britain and Scotland in the 1940's. In 1954 the Ordnance Survey published the 1:10,000 scale maps. These maps are used to update the 1:10,000 maps. The published data on these maps are often some years later than the surveyed date. Before 1938, all OS maps were based on the Cassini Projection, with independent surveys of a single county or group of counties giving rise to significant inaccuracies in cutting areas. In the late 1940's, a Provisional Edition was produced, which updated the 1:10,000 mapping from a number of sources. The maps appear unfinished - with all military camps and other strategic sites removed. These maps were initially overprinted with the National Grid. In 1970, the first 1:10,000 maps were produced using the Transverse Mercator Projection. The revision process continued until recently, with new editions appearing every 10 years or so for urban areas.

**Map Name(s) and Date(s)**



**Historical Map - Slice A**



**Order Details**

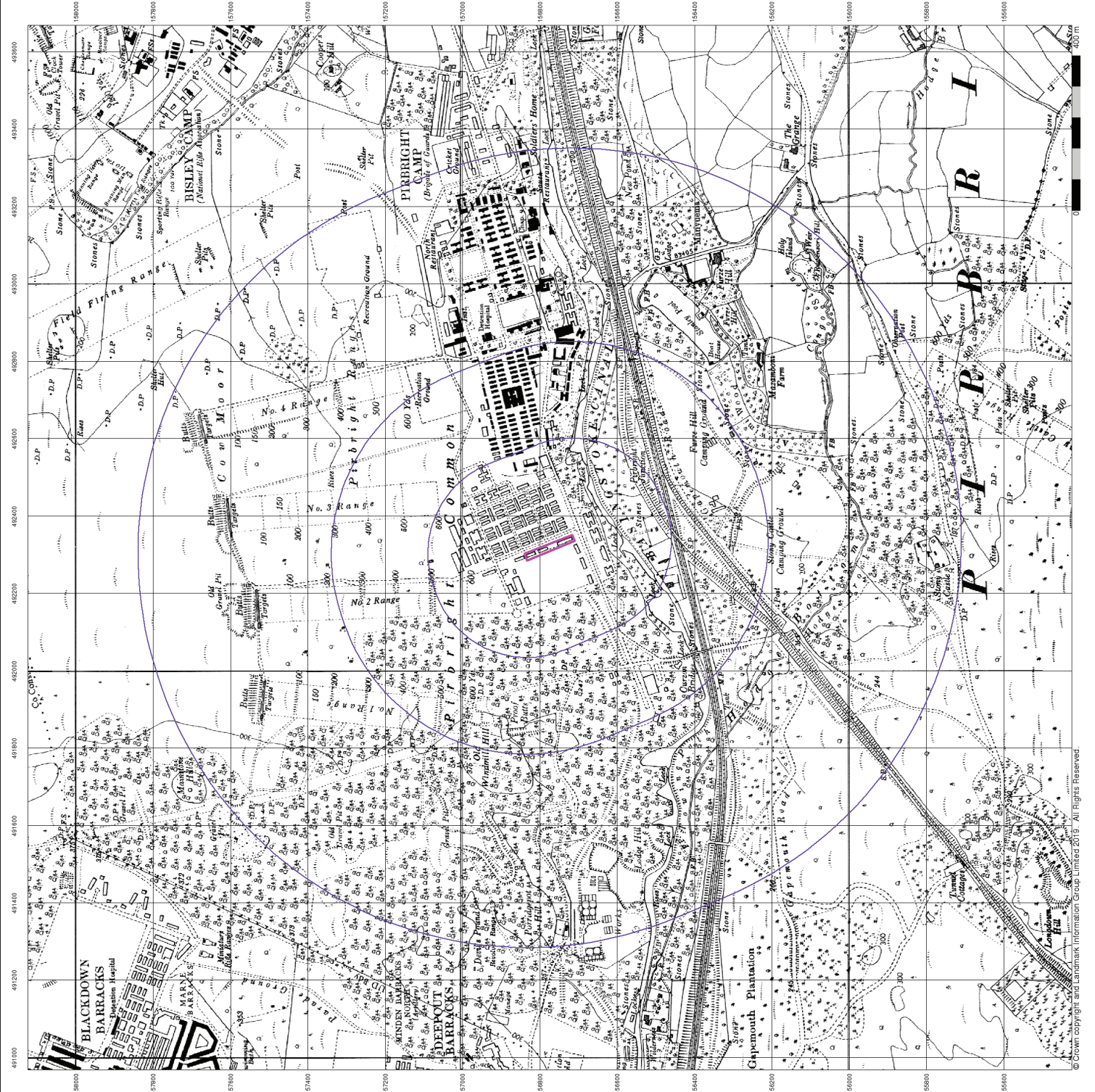
Order Number: 22137301\_1\_1  
 Customer Ref: 1909006.001  
 National Grid Reference: 492320, 156770  
 Slice: A  
 Site Area (Ha): 0.24  
 Search Buffer (m): 1000

**Site Details**

Brunswick Camp, Pirbright, GU24 0QQ



A Landmark Information Group Service v50.0 14-Oct-2019 Page 8 of 12  
 Tel: 0844 844 9952  
 Fax: 0844 844 9951  
 Web: www.envirocheck.co.uk



© Crown Copyright and Landmark Information Group Limited 2019. All Rights Reserved.









# TWEEDIE EVANS CONSULTING 10k Raster Mapping Published 1999

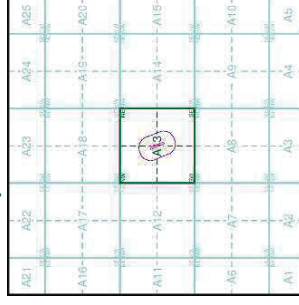
Source map scale - 1:10,000

The historical maps shown were produced from the Ordnance Survey's 1:10,000 colored raster map. These maps are derived from data which was digitized in 1999. The original data published in 1970. This data is highly detailed showing buildings, roads and field boundaries as well as all roads, tracks and paths. Road names are also included together with the relevant road number and classification. Boundary information depiction includes county, unitary authority, district, civil parish and constituency.

## Map Name(s) and Date(s)

SUS5NW  
1999  
1:10,000

## Historical Map - Slice A



## Order Details

Order Number: 22137301\_1\_1  
Customer Ref: 1909006.001  
National Grid Reference: 492320, 156770  
Slice: A  
Site Area (Ha): 0.24  
Search Buffer (m): 1000

## Site Details

Brunswick Camp, Pirbright, GU24 0QQ



Tel: 0844 844 9952  
Fax: 0844 844 9951  
Web: www.envirocheck.co.uk

