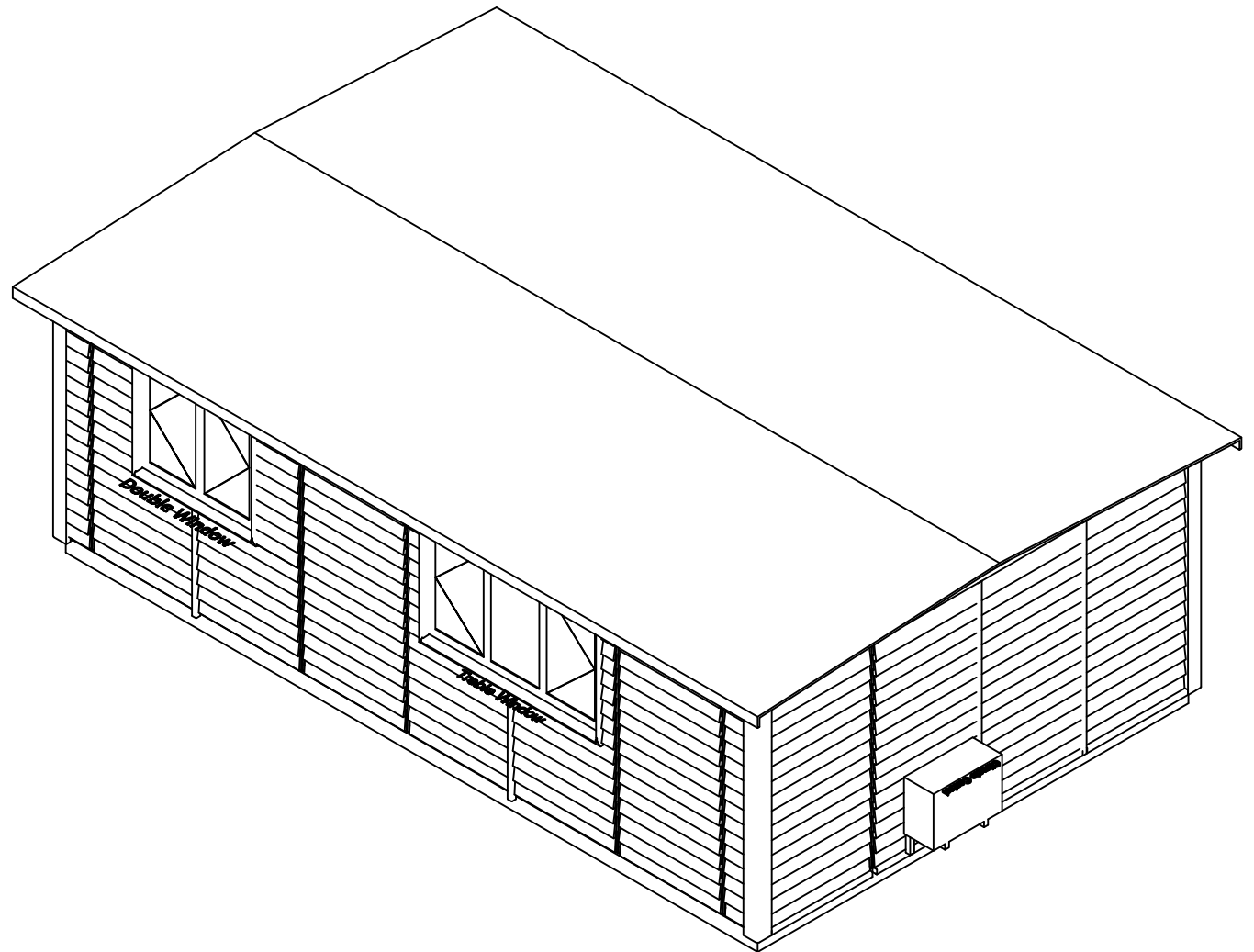
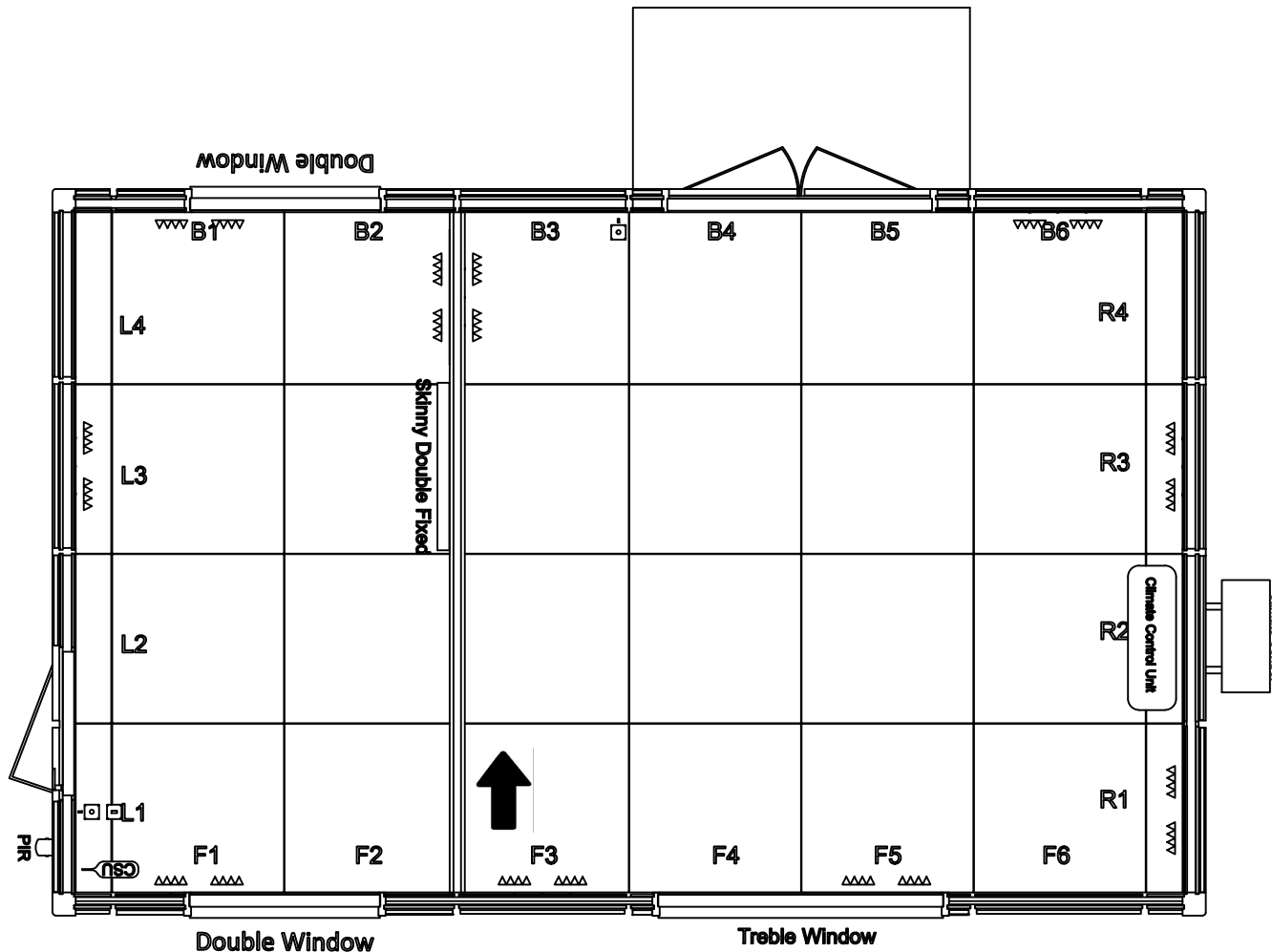


**SMART**

Suffolk Barn - 6.9 x 4.3

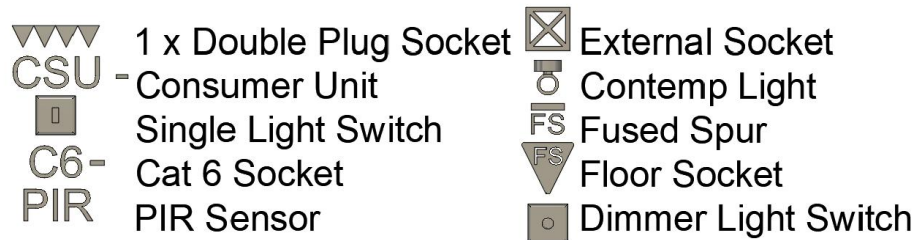
Kate Day






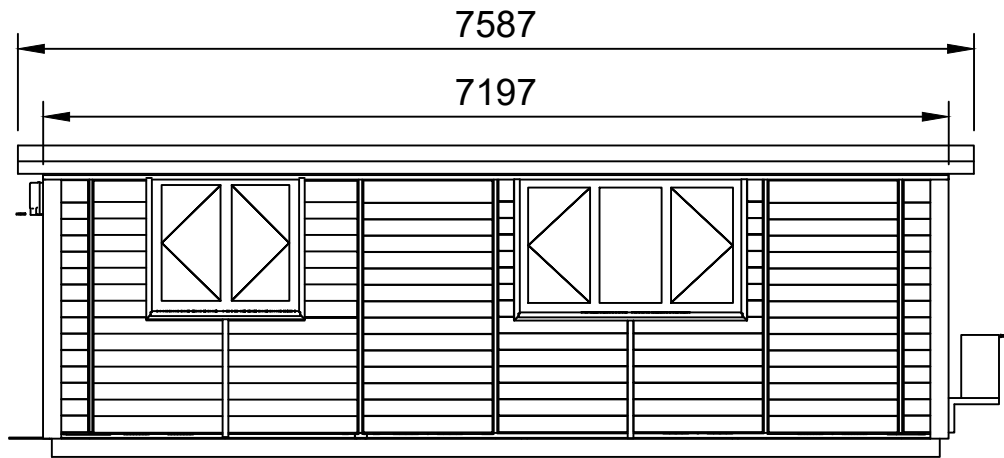
### Notes

- External Colour - Ball Green
- Flooring - Anthracite Grey carpet
- Interior finish - Popular 1
- Blinds - fitted to all windows and doors
- Internal lighting - 4 bar lights
- External lighting - 1 x Bulkhead and PIR on L1
- Heaters - 1 x Oil filled radiator
- Sockets - 450mm from the internal floor level.
- Extras -
- Partition wall with sliding door and intergral fixed window
- Climate control, located on R2 internally and wall mounted externally on R2
- 2m x 1m ramp in front of the double doors.
- Cat 6 socket TBC
- Ground screw base
- 250L Water butt

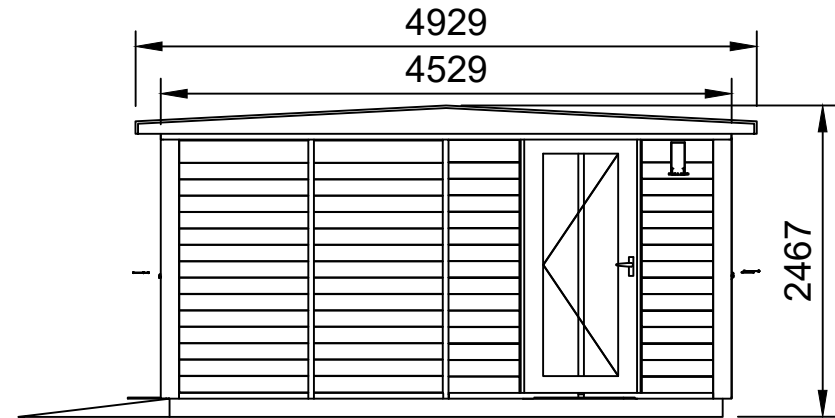


All dimensions in mm

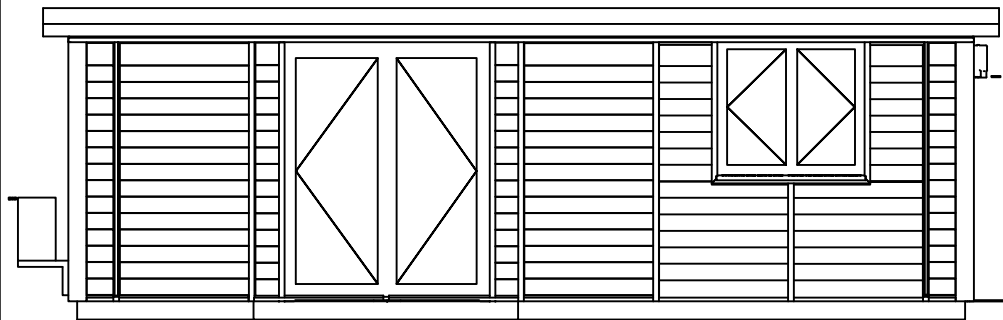
Part No.	Material	Tolerance
Description Suffolk Barn - 6.9 x 4.3 - Kate Day	Created By Martin Lankester	Scale 1:30
	Date 16/12/2020	Approved By
		Sheet No.
		Rev



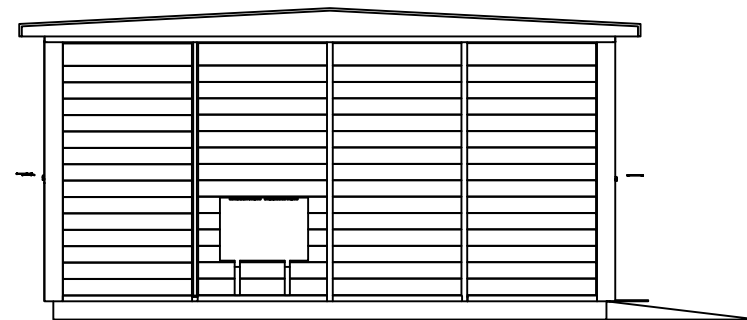
Front Elevation




Left Elevation



Rear Elevation



Right Elevation

Part No.	Material	Tolerance
Description Suffolk Barn - 6.9 x 4.3 - Kate Day	Created By Martin Lankester	Scale 1:100
	Date 16/12/2020	Approved By
 <small>GARDEN ROOMS, OFFICES AND STUDIOS</small>	Sheet No.	Rev

All dimensions in mm