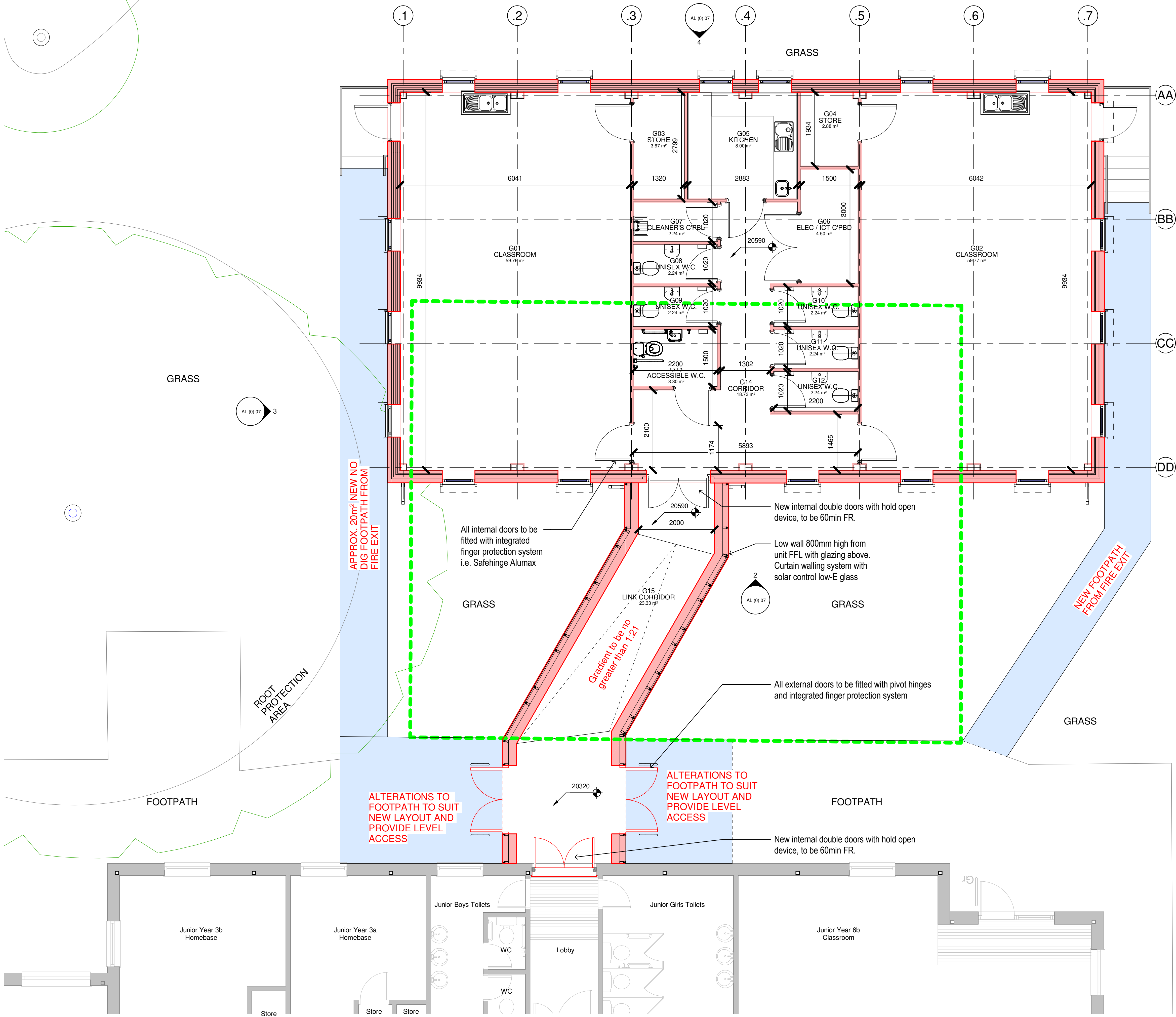
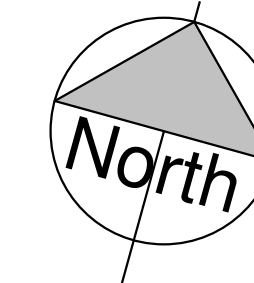


Significant Risks:

This map is reproduced from Ordnance Survey material with the permission of Ordnance Survey on behalf of the Controller of Her Majesty's Stationary Office © Crown Copyright. Unauthorised reproduction infringes Crown copyright and may lead to prosecution or civil proceedings. Cardiff Council, LA09005L, 2001.



**KEY**

- NEW CONSTRUCTION
- EXISTING SCHOOL BLOCK
- OUTLINE OF EXISTING DEMOUNTABLE
- TREES
- NEW / ALTERED PATHWAYS

**1 02 PROPOSED DEMOUNTABLE FFL**  
1 : 50

revision		
title		
<b>GLYNCOED PRIMARY SCHOOL - REPLACEMENT MODULAR TEACHING UNIT</b>		
detail		
<b>PROPOSED FLOOR PLAN</b>		
filepath		
project number	drawing number	revision
<b>EDUA 1975</b>	<b>AL (0) 06</b>	
scale As indicated @A1	checked SS	drawn AT date NOV 2020
DATLŶGIAID ECONOMAIDD ECONOMIC DEVELOPMENT PROYECTAU DYLLUNO A DATLŶGU PROJECTS, DESIGN & DEVELOPMENT <b>Jeff Townsend</b> Rheolwr Gweithredol Acting Operational Manager		FS 25745 
COPYRIGHT OF CARDIFF COUNCIL ALL RIGHTS RESERVED		<b>PLANNING</b>
FOR SIGNIFICANT RISKS SEE ABOVE Do not scale drawing except for Planning Application Purposes		
County Hall, Atlantic Wharf, Cardiff Bay, CF10 4UW Telephone: 029 2233 0200		