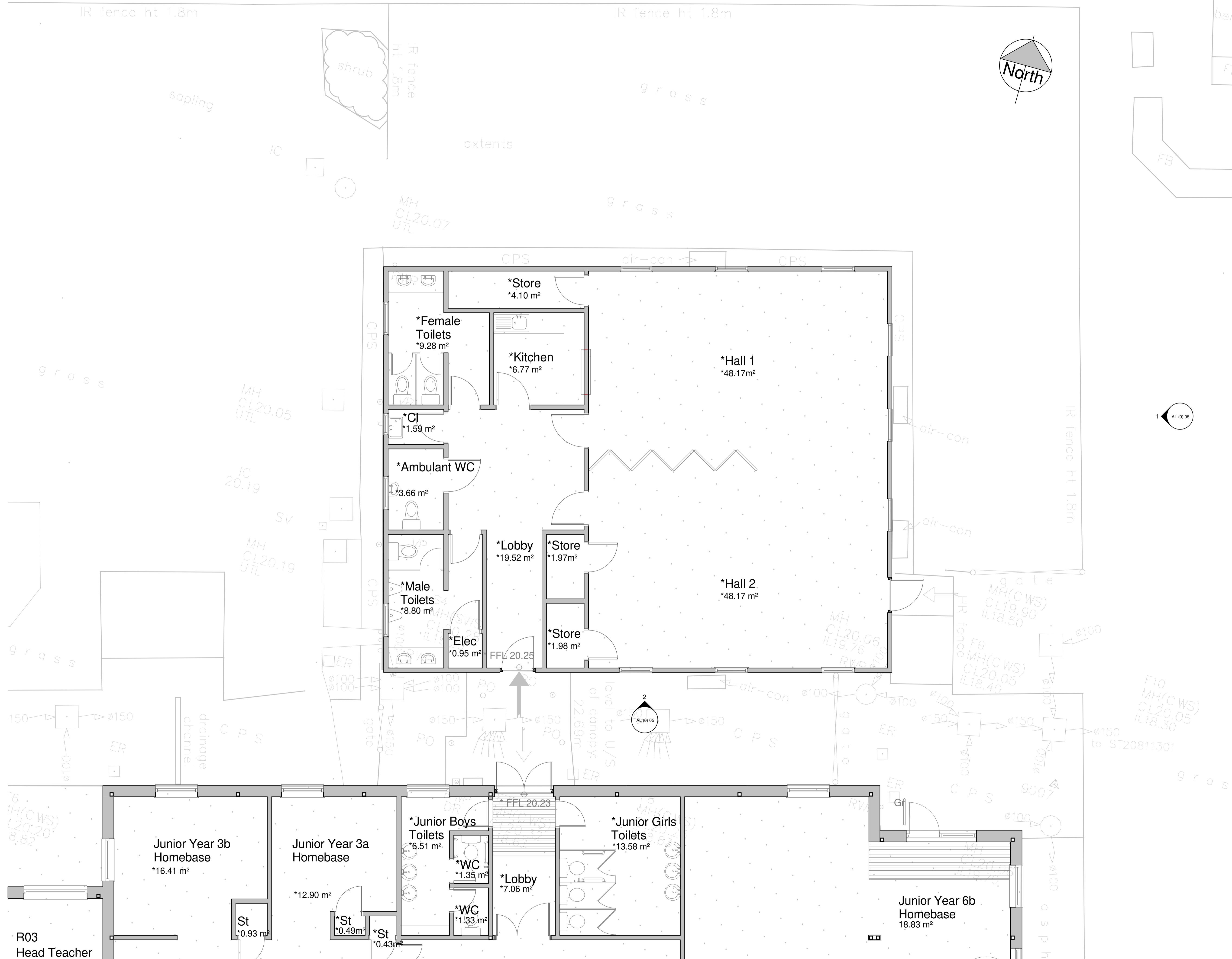


Significant Risks:

--

This map is reproduced from Ordnance Survey material with the permission of Ordnance Survey on behalf of the Controller of Her Majesty's Stationary Office © Crown Copyright. Unauthorised reproduction infringes Crown copyright and may lead to prosecution or civil proceedings. Cardiff Council, LA09005L 2001.



revision		
title		
GLYNCOED PRIMARY SCHOOL - REPLACEMENT MODULAR TEACHING UNIT		
detail		
EXISTING MODULAR UNIT FLOOR PLAN		
filepath		
project number	drawing number	revision
EDUA 1975	AL (0) 04	
scale	checked	date
1:50 @A1	SS	NOV 2020
Jeff Townsend RHEOLWR GWETHREDOL ACTING OPERATIONAL MANAGER		FS 25745
PLANNING		
<small>Do not scale drawing except for Planning Application Purposes</small>		
<small>County Hall, Atlantic Wharf, Cardiff Bay, CF10 4UW Telephone: 029 2233 0200</small>		