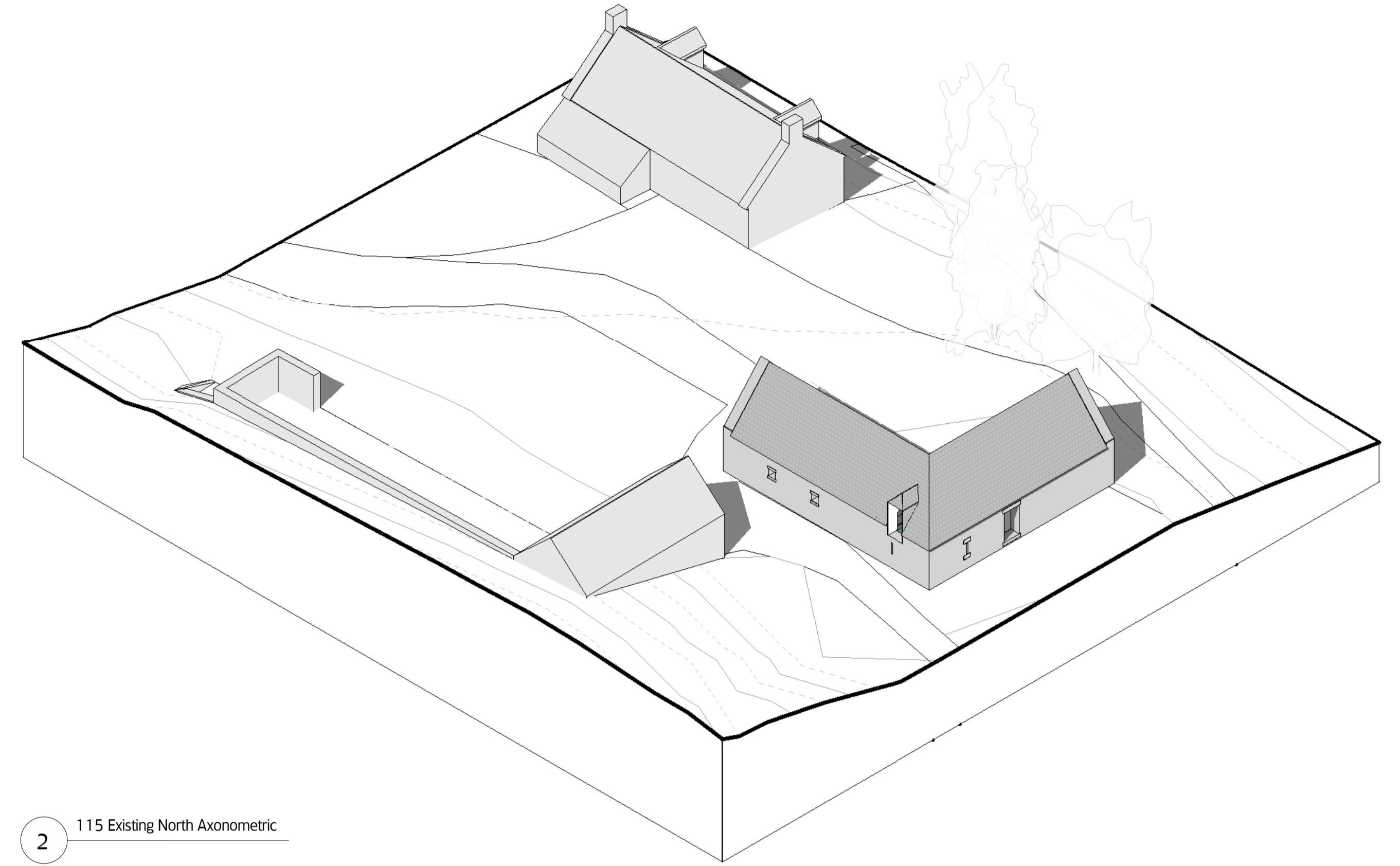
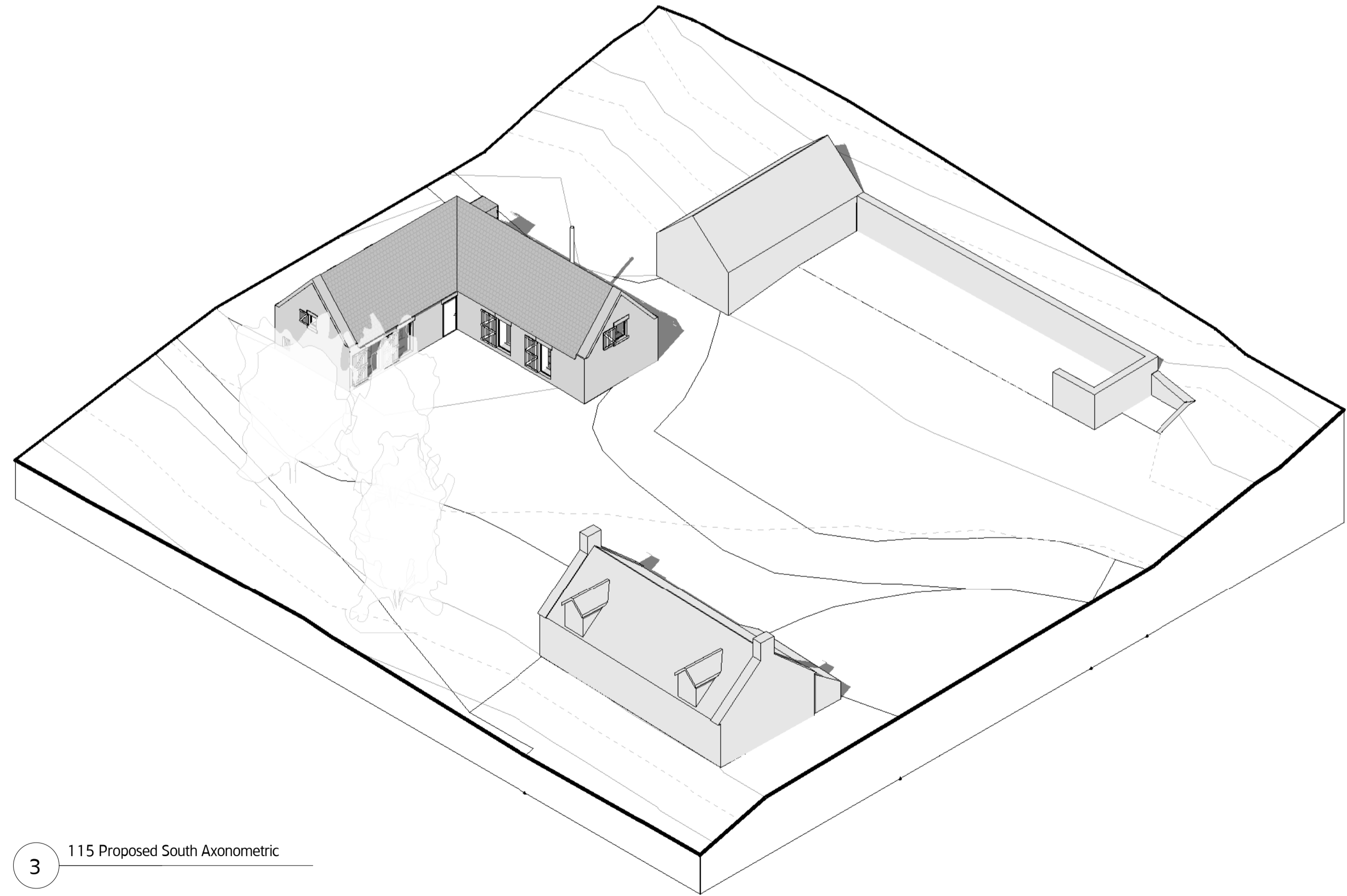


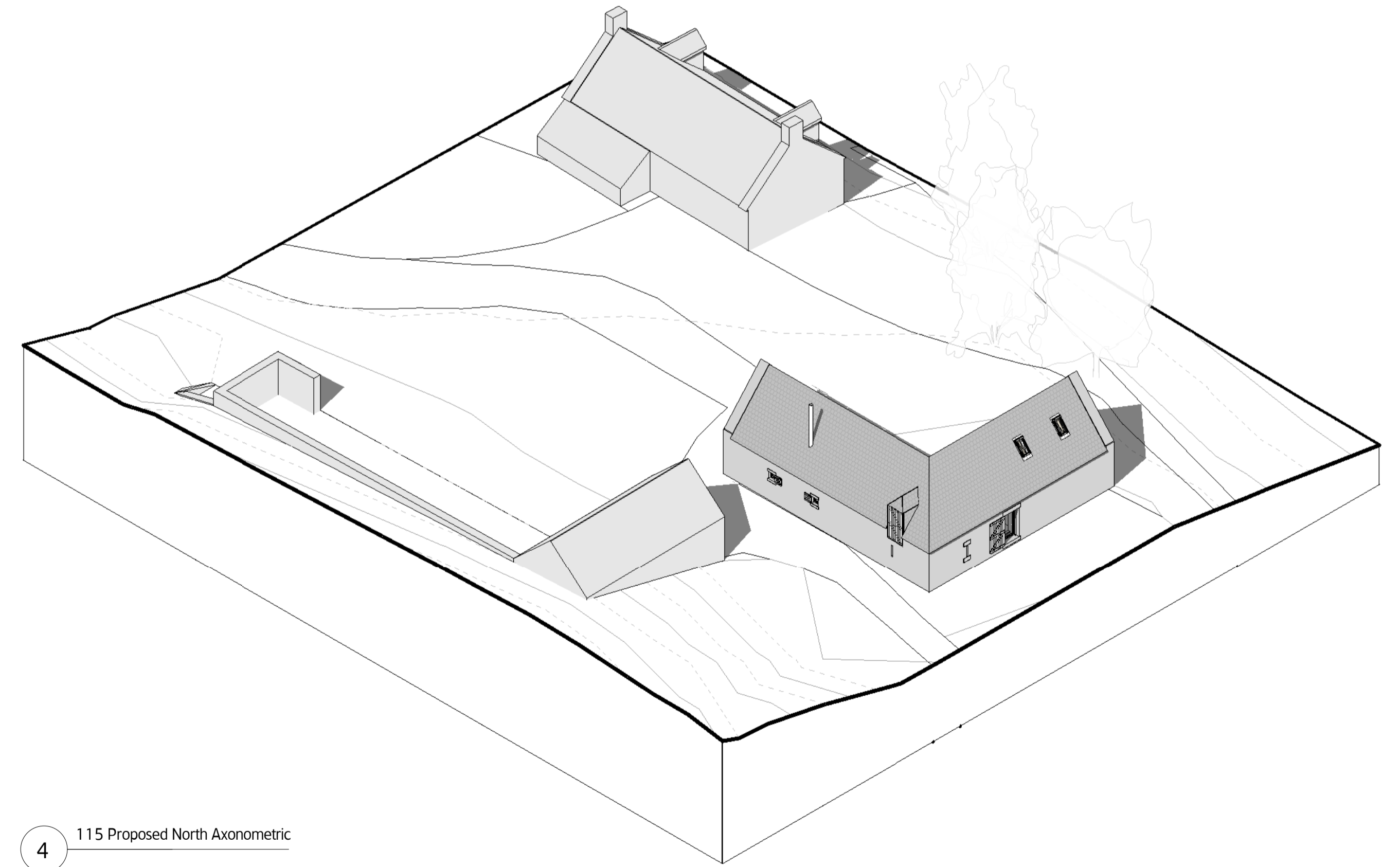
1 115 Existing South Axonometric



2 115 Existing North Axonometric



3 115 Proposed South Axonometric



4 115 Proposed North Axonometric



moxon
LONDON
Great Western Studios, 65 Abbed Road, London W2 5EU
t 0207 534 0088 f 0207 534 0099
SCOTLAND
Ardoch, Crathie, Aberdeenshire AB35 5UN
t 01339 742047 f 0207 034 0099
mail@moxonarchitects.com | www.moxonarchitects.com

Project		Ardoch Steading	
Drawing Title		Site Axonometrics	
Status		Information	
Drawn by	EPH	Checked by	
Project No	703	Scale	
Drawn No	121	Rev	01
REV	DATE	DESCRIPTION	DRAWN
01	11.01.21	For Comment	EPH
			CHK