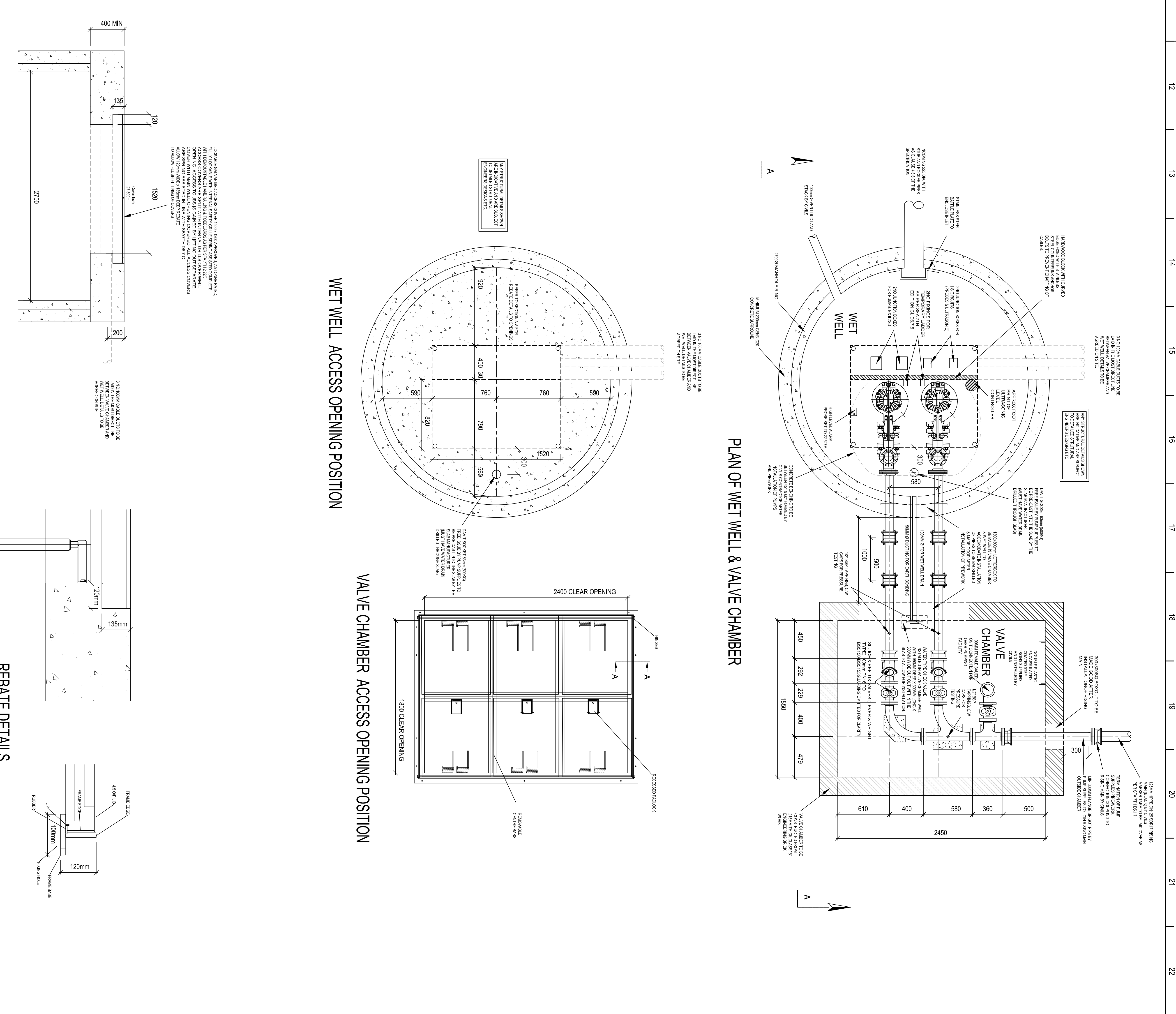
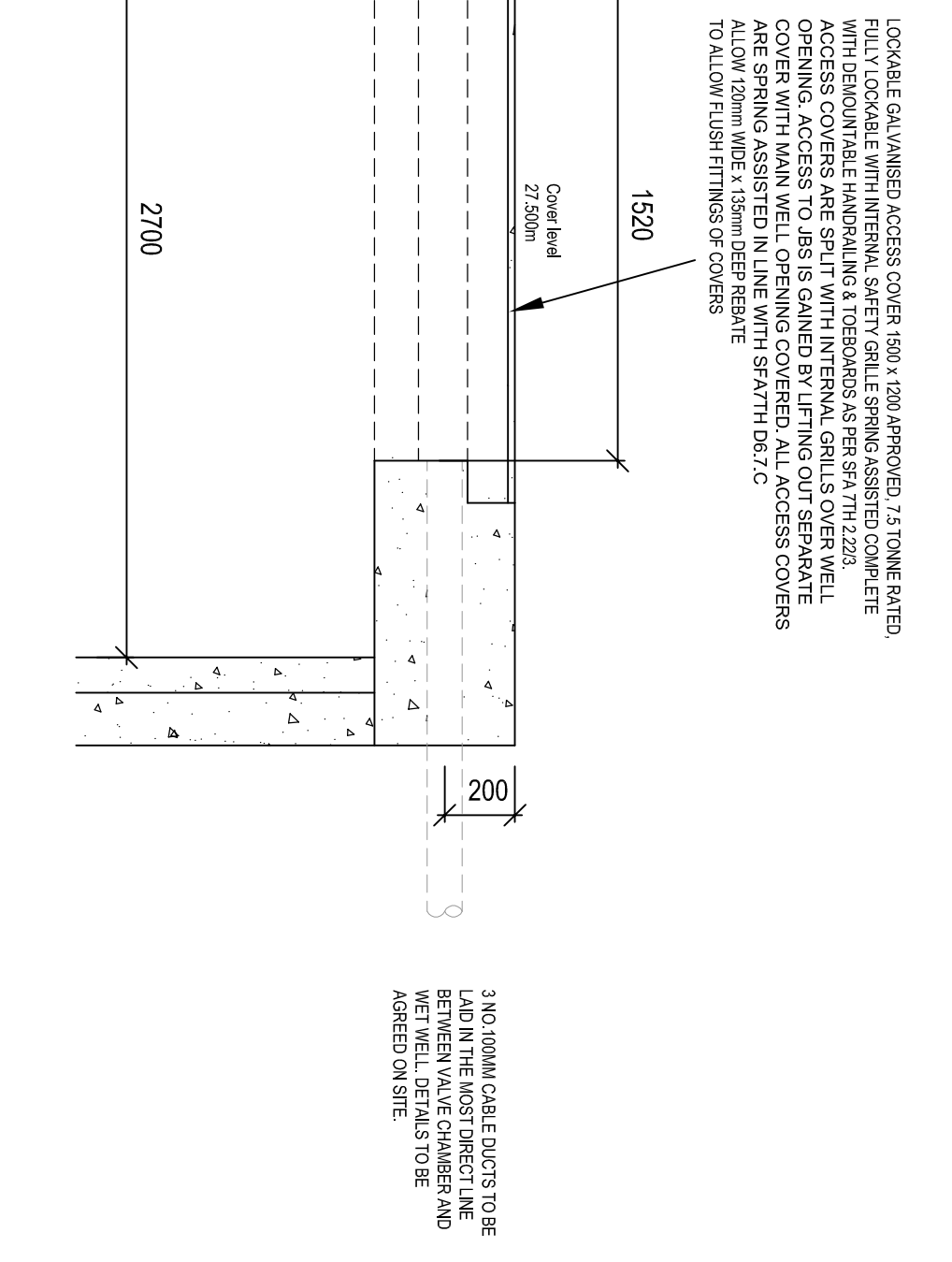


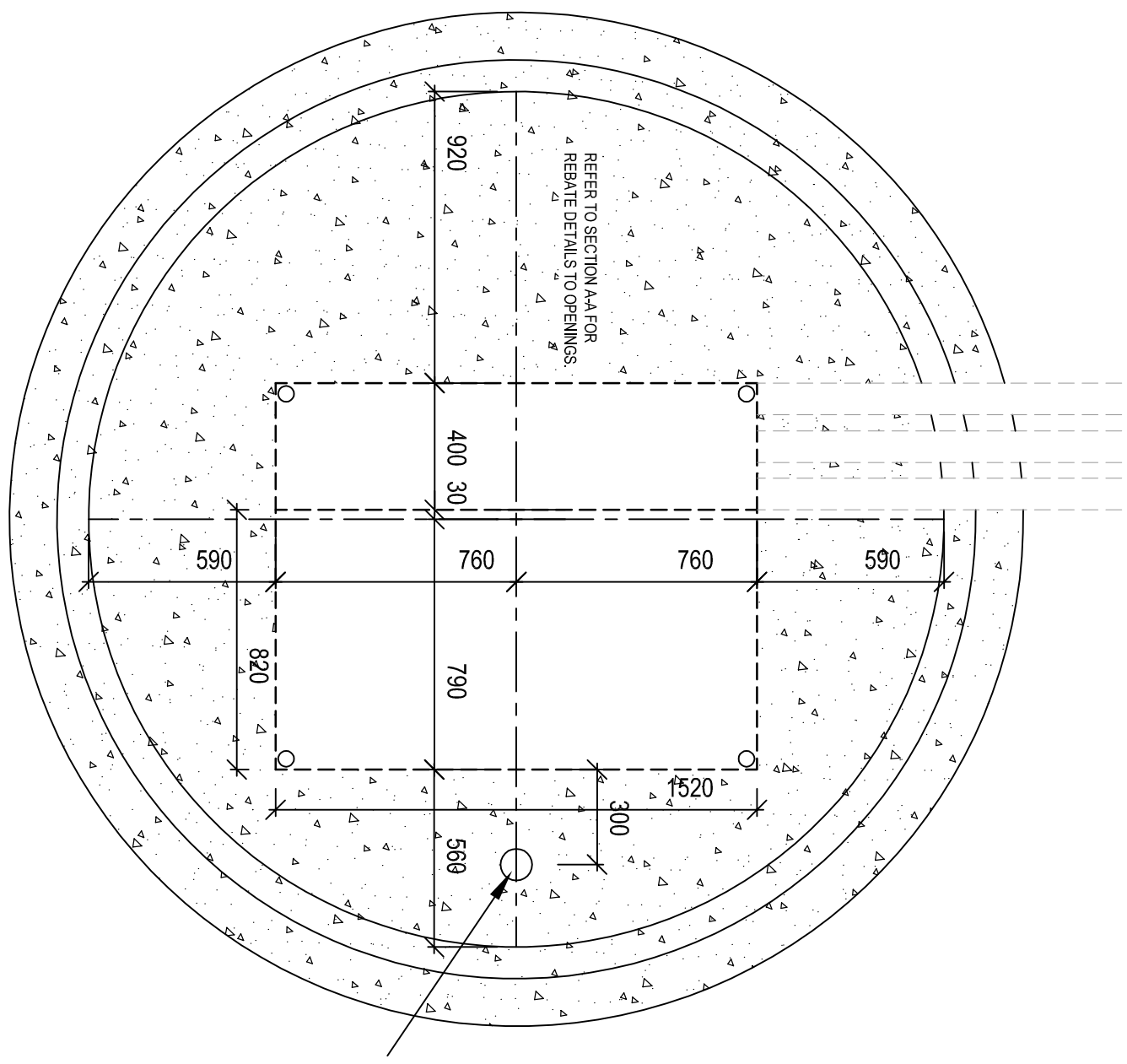
COMPOUND & DUCTING ARRANGEMENTS



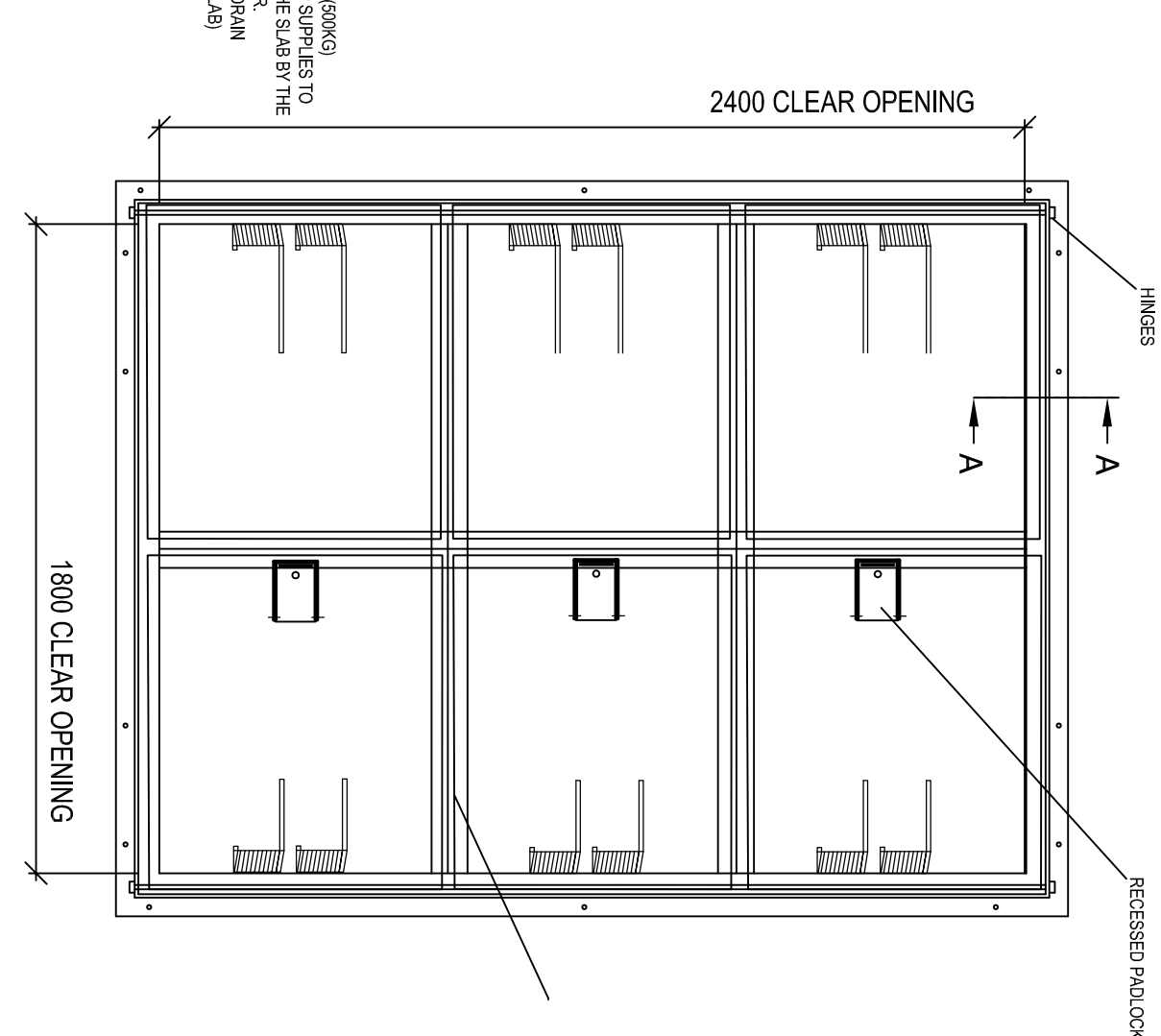
PROPOSED CROSS SECTION THROUGH COVER SLAB



WET WELL ACCESS OPENING POSITION

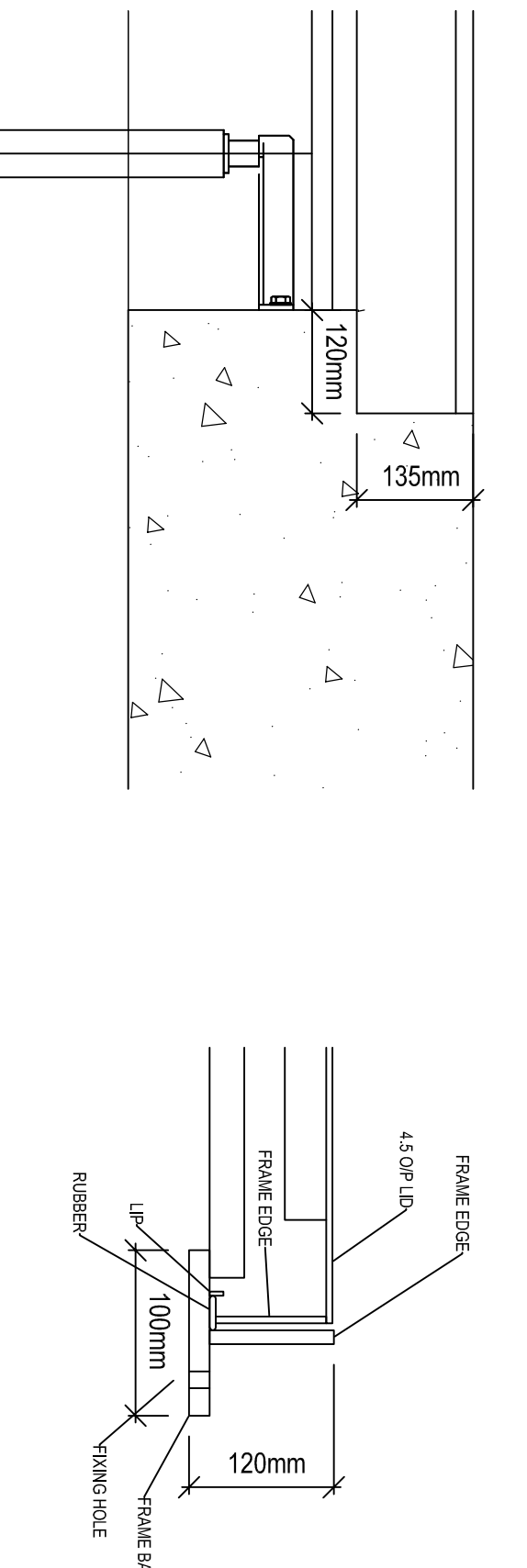


VALVE CHAMBER ACCESS OPENING POSITION



ISSUED FOR CONSTRUCTION

REBATE DETAILS



REV	DATE	DESCRIPTION
A	02.08.18	INVERT LEVEL, TEXT AMENDED & DRAIN GULLY ADDED TO TANKER HAROSTANDING
B	08.10.18	REVISION IN ACCORDANCE WITH UNITED UTILITIES COMMENTS
C	10.10.18	ISSUED FOR CONSTRUCTION
D	15.05.19	DESIGN LEVELS AMENDED

Bellway

Pump Supplies

BROWNING WAY, WOODROD PARK INDUSTRIAL ESTATE
WINSFORD, CHEREMERE CV7 2JK
TEL: 01606 863151
FAX: 01606 863159

PUMP & PUMPING STATION SPECIALISTS

TITLE: WAYS GREEN, WINSFORD

TITLE: GENERAL ARRANGEMENT OF 2 SUBMERSIBLE SEWAGE PUMPS

DRAWN: JL DATE: 25.06.18 ORIGINAL SCALE: 1:20 ORIGINAL SIZE: A0
DRAWING NUMBER: 18-102-1 SHEET: 001 REV: D

DO NOT SCALE