


# CLEARWATER

3 layouts available • Sleeps 4-6

We've worked hard to make the Clearwater the best entry-level holiday lodge on the market.

The only thing you'll love more than the Clearwater's classic styling, top quality features and open plan layout is its price point.

 View our 360 walk-through online tour

 For more details visit [willerby.com](http://willerby.com)



## STANDARD FEATURES

### EXTERIOR/STRUCTURE

- Vinyl cladding - standard colour white
- Energy efficient white PVCu double glazed windows and doors

### INTERIOR FEATURES

- Lobby seating to entrance
- Central heating system featuring high-efficiency condensing combi boiler
- Brushed chrome and white sockets and USB outlets
- Overhead attic storage lockers

### LOUNGE

- Single sliding patio doors
- Two seater sofas with scatter cushions
- Electric fire
- Sideboard and coffee table
- Wall-mounted TV point

### DINING AREA

- Freestanding dining table
- Upholstered dining chairs
- Welsh dresser

### KITCHEN

- Integrated microwave
- Integrated under-counter fridge and freezer
- Gas oven/grill with glass splashback and extractor fan
- Separate 4-burner gas hob
- Cloakroom

### MAIN BEDROOM

- King-size bed with lift-up storage system
- Bedding pack – Cool Blue
- Bedside cabinets
- Walk-in wardrobe
- Mirrored dressing table (and stool in 40ft models)
- Wall-mounted TV point

### ENSUITE

- Quad shower enclosure with thermostatic shower
- Dual flush WC and washbasin

### TWIN BEDROOM(S)

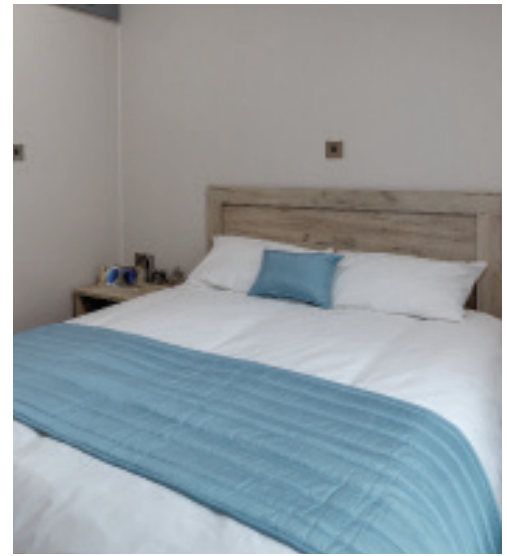
- 3ft wide single beds
- Bedding pack – Cool Blue
- Bedside cabinet
- Walk-in wardrobe (two bed models)
- Wall-mounted TV point

### FAMILY SHOWER ROOM

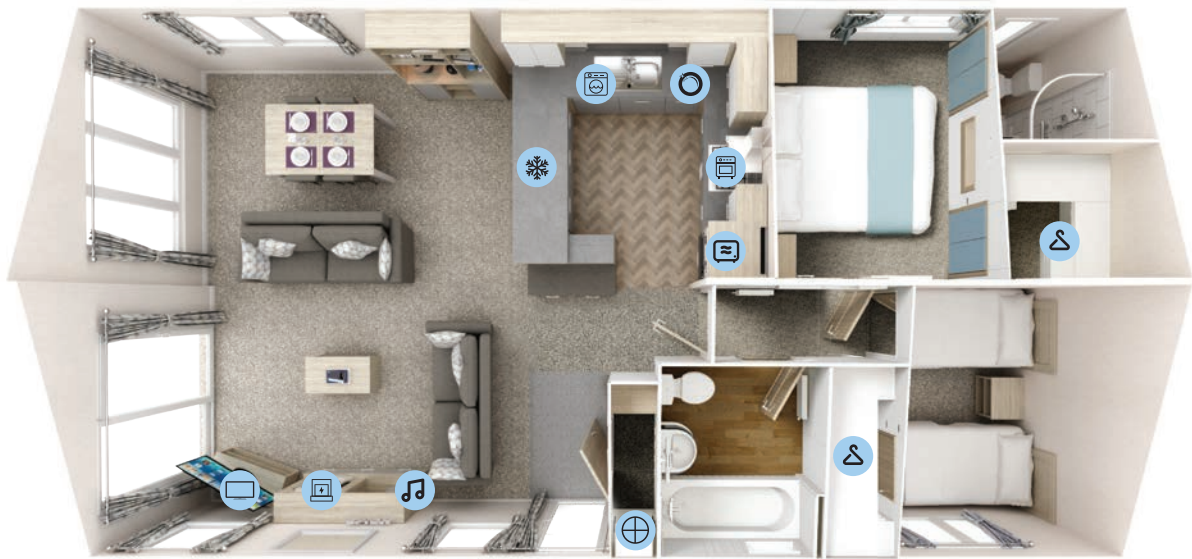
- Bath with overhead shower and screen (two bed models)
- Quad shower enclosure with thermostatic shower (three bed model)
- Dual flush WC and washbasin mounted on vanity unit

## OPTIONAL EXTRAS

- Luxury Pack
- Exterior cladding - CanExel® options
- Environmental Green rigid vinyl exterior with graphite windows
- Moulded GRP front bargeboard
- Fully galvanised chassis
- Bay window
- Wireless thermostat
- Additional armchair to lounge
- Fold-out sofa bed to lounge
- Antique style mirror to lounge
- Additional dining chairs
- King-size or double bed to replace twin beds (second bedroom)
- Bath to replace shower in family shower room (three bed model)
- Shower to replace bath in family bathroom (two bed models)
- Residential Specification BS 3632 (2015)\*
- European Specification
- Simply Better Sleep mattress upgrade pack
- Trace heating
- Eco pack



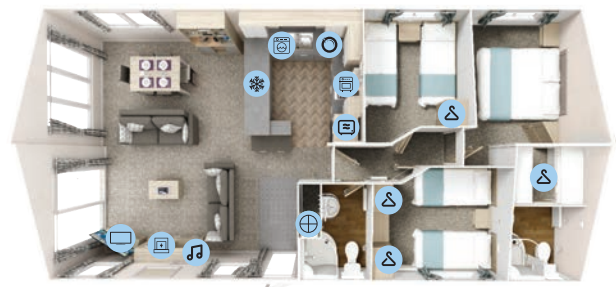
# FLOOR PLANS



Clearwater • 36 x 20 • 2 bedroom • sleeps 4



Clearwater • 40 x 20 • 2 bedroom • sleeps 4



Clearwater • 40 x 20 • 3 bedroom • sleeps 6

## Key

- |              |                     |                |
|--------------|---------------------|----------------|
| Boiler       | Microwave           | Fridge-freezer |
| MP3 position | Fire                | Wardrobe       |
| Washer/dryer | TV space            | Cooker         |
| Hob          | Slimline Dishwasher |                |



For more images and videos of the Clearwater please visit us online at [willerby.com/clearwater](http://willerby.com/clearwater)

Model designations shown for the above product(s) are not definitive dimensions. For actual dimensions please refer to the table on page 63. Product photography shows the 40 x 20 2 bed model with optional deluxe pack and luxury pack. Lifestyle photography shows the 40 x 20 3 bed model with optional deluxe pack. Your holiday lodge may vary from product photography based on your chosen specification, options selected and availability of materials. Some of the items photographed (such as TV, DVD player, kettle, and ornaments etc.) are accessories used for illustrative purposes only and are not included. Specifications and options are accurate as of 3rd February 2020. All specifications and options are subject to change and are superseded by any subsequent publication. Additional product images can be viewed at [willerby.com](http://willerby.com)