

SHERATON

2 layouts available • Sleeps 6

The Sheraton is a classic home that is sure to turn heads. With a soothing colour palette, it's the perfect retreat from busy modern life.

Do you need some extra space? You can super-size to our Sheraton Elite model which is an impressive 42 x 14.



View our 360 walk-through online tour



For more details visit willerby.com



STANDARD FEATURES

EXTERIOR/STRUCTURE

- Aluminium cladding - *standard colour Light Grey*
- Energy efficient white PVCu double glazed windows and doors
- Fully galvanised chassis

INTERIOR FEATURES

- Central heating system featuring high-efficiency condensing combi boiler
- Brushed chrome sockets and USB outlets

LOUNGE

- Two freestanding two-seater sofas, one with fold-out sofa bed
- Scatter cushions
- Footstool (Elite model)
- Wood burner effect electric fire
- Coffee table
- TV unit and TV point
- Mirror

DINING AREA

- Freestanding dining table and upholstered dining chairs
- Welsh dresser

KITCHEN

- Velux® window (Elite model)
- Integrated microwave
- Integrated 70/30 fridge-freezer
- Gas oven/grill with 4 burner hob and glass splashback
- Extractor fan

MAIN BEDROOM

- King-size bed with lift-up storage system and upholstered headboard
- Bedside cabinets
- Walk-in wardrobe
- Dressing table with mirror and stool
- Tallboy drawer unit
- TV point
- Ensuite shower room (13ft model)
- Ensuite bathroom (Elite model)

TWIN BEDROOM(S)

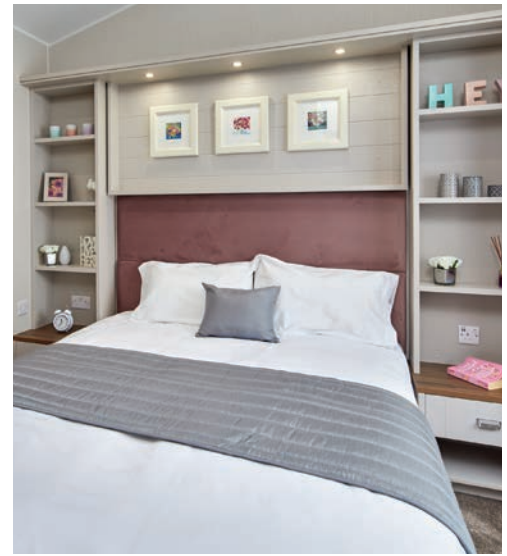
- Single beds with upholstered headboards (3ft wide single beds in Elite mode)
- Bedside cabinet
- Wardrobe
- TV point

FAMILY SHOWER ROOM

- Shower enclosure with thermostatically controlled shower
- Dual flush WC
- Wash basin

OPTIONAL EXTRAS

- Deluxe Pack
- Sheraton Lodge Specification - including CanExel® cladding and window frames in a choice of colours, Residential Specification BS 3632 (2015), outlook French doors to lounge and Sheraton Lodge name badge
- Exterior cladding – rigid vinyl and CanExel® options
- Environmental Green exterior with graphite windows
- Graphite PVCu windows and doors
- Outlook French doors to lounge
- Wireless thermostat
- Storage footstool to lounge
- High level TV point to lounge
- Double bed to replace twin beds
- Shower to replace bath in ensuite (Elite model only)
- Residential Specification BS 3632 (2015) *Includes outlook French doors to lounge
- European Specification
- Trace heating
- Eco pack



FLOOR PLANS



Sheraton • 40 x 13 • 2 bedroom • Sleeps 6



Sheraton Elite • 42 x 14 • 2 bedroom • Sleeps 6

Key

- | | | | | | |
|--|---------------------------|--|--------------------|--|--------------|
| | Boiler | | Microwave | | Fold-out bed |
| | Fridge-freezer | | MP3 position | | Fire |
| | Wardrobe | | Washer/dryer space | | TV space |
| | Slimline dishwasher space | | Cooker | | |



For more images and videos of the Sheraton please visit us online at willerby.com/sheraton

Model designations shown for the above product(s) are not definitive dimensions. For actual dimensions please refer to the table on page 121. Photography shows the 42 x 14 Sheraton Elite model with optional Residential Specification BS 3632 (2015) and deluxe pack. Product photography is intended for illustrative purposes only. Your holiday home may vary from product photography based on your chosen specification, options selected and availability of materials. Some of the items photographed (such as TV, DVD player, kettle, and ornaments etc.) are accessories used for illustrative purposes only and are not included. Specifications and options are accurate as of 1st October 2020. All specifications and options are subject to change and are superseded by any subsequent publication. Additional product images can be viewed at willerby.com