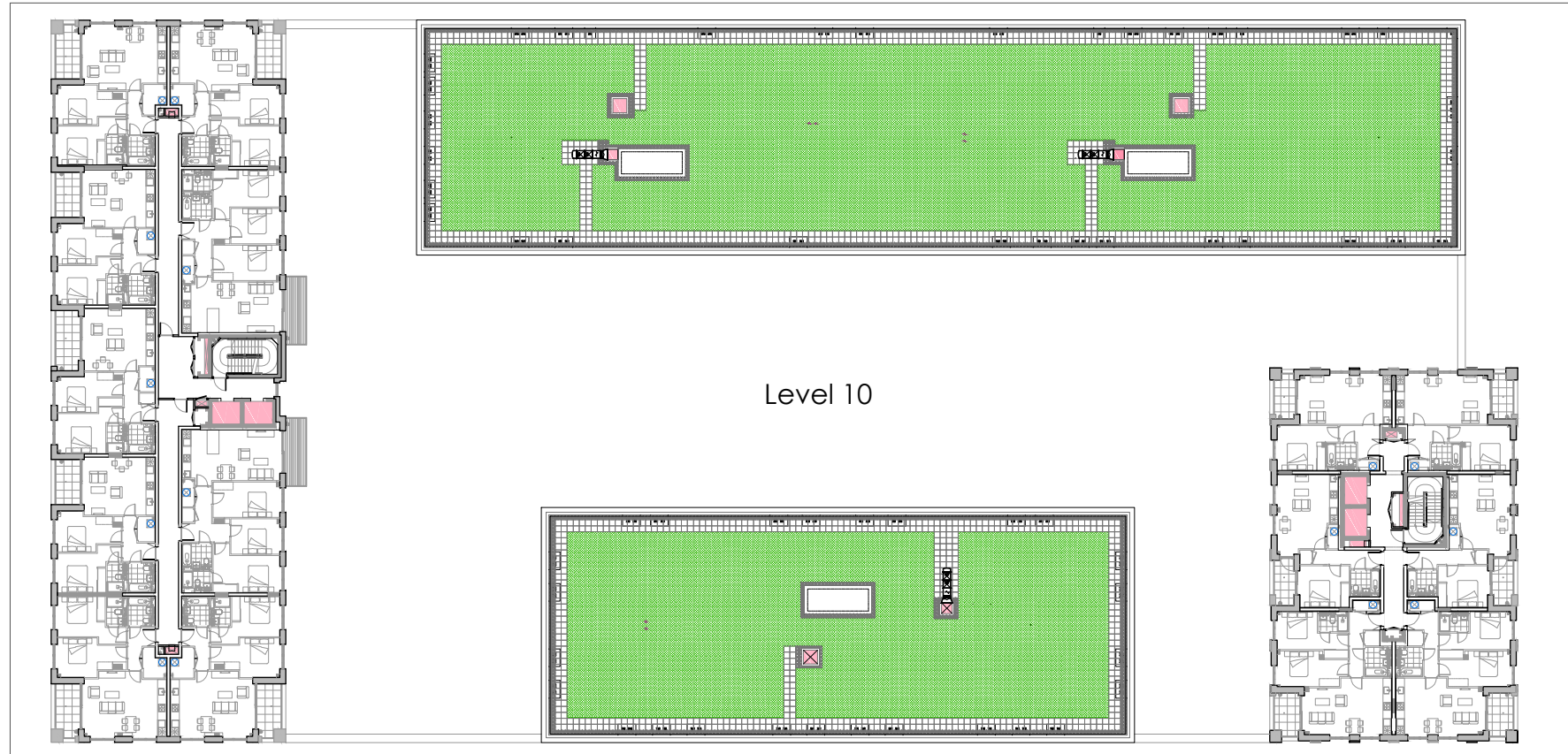


Condition 22 vi. Biodiverse Roofs

Core C - Levels 10 and 12



KDS ASSOCIATES LTD
TECHNICAL ● ARCHITECTURAL ● MANAGEMENT ● CONSULTANTS
101 THE BLACKFRIARS FOUNDRY
156 BLACKFRIARS ROAD
LONDON SE1 8EN
0203 355 0775
www.kdsassociates.co.uk

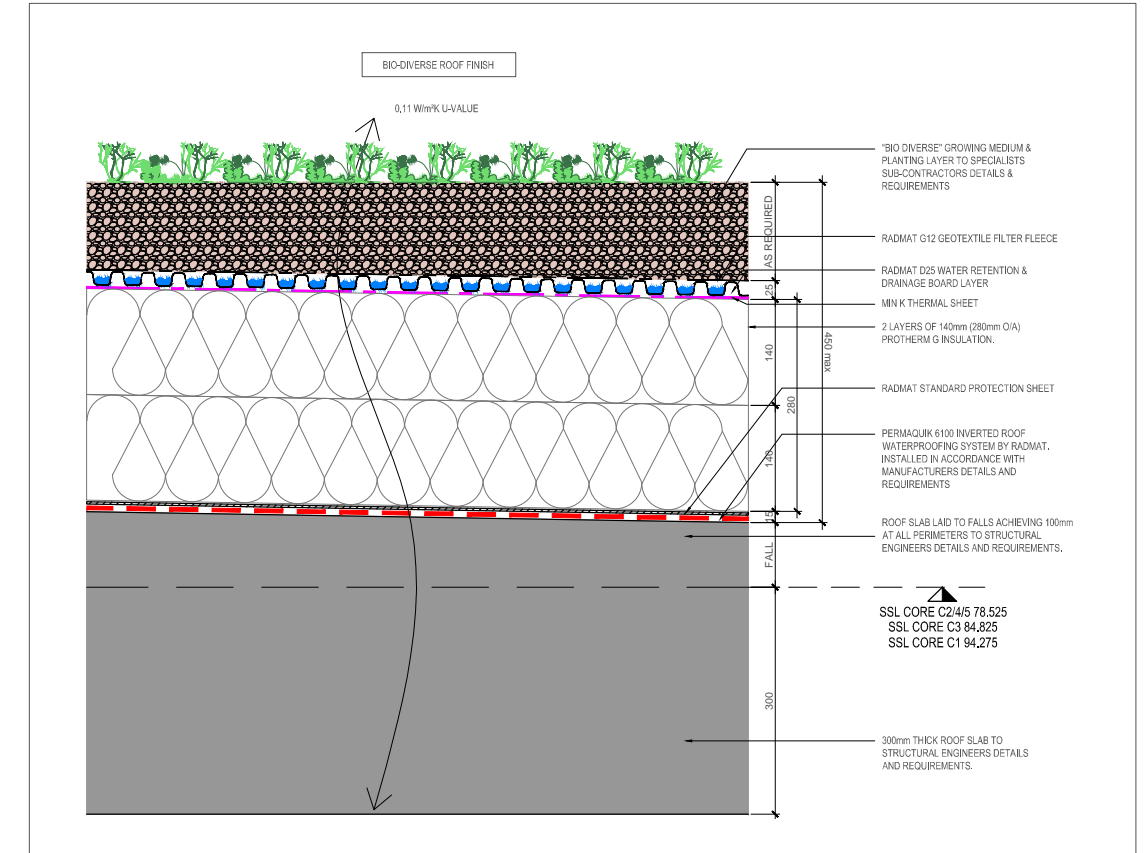
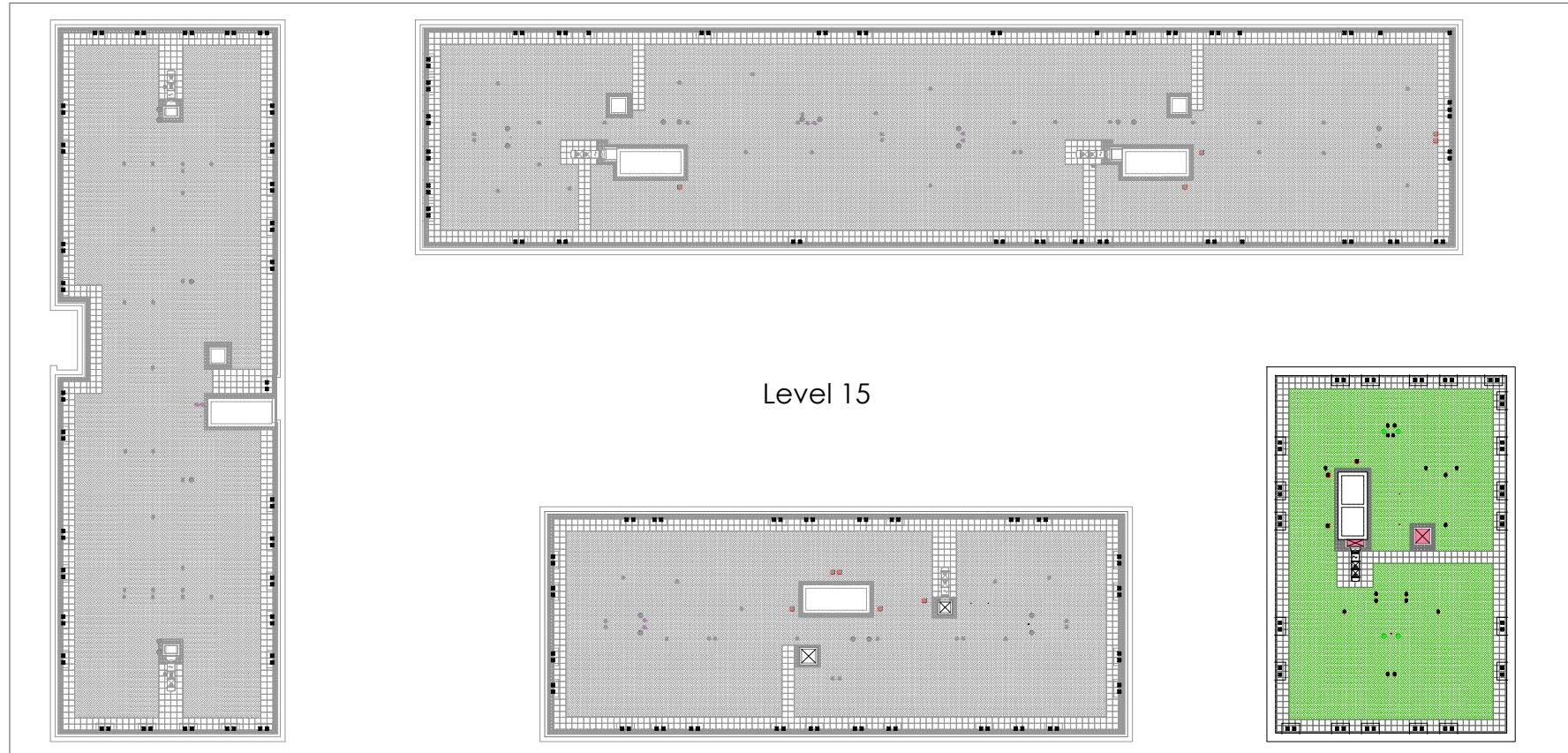


Condition 22 vi. Biodiverse Roofs

Core C - Level 15



KDS ASSOCIATES LTD
 TECHNICAL • ARCHITECTURAL • MANAGEMENT • CONSULTANTS
 101 THE BLACKFRIARS FOUNDRY
 156 BLACKFRIARS ROAD
 LONDON SE1 8EN
 0203 355 0775
 www.kdsassociates.co.uk



Notes

Details of Bio-diverse living roof for Blocks C1, C2, C3, C4 and C5.

Planted/seeded with an agreed mix of species within the first planting season to take place during the first late winter, early spring or Autumn following practical completion of the building works. The living roofs shall not be used as an amenity or sitting out space of any kind and shall only be used in case of essential maintenance or repair.

Design Specification

The living green roof to be Ratmat Med0 Biodiverse system or similar approved.

Maintenance

Planned maintenance to be carried out in co-ordination with regular scheduled maintenance panels. Fall restraint system not required owing to parapet height greater than 1100mm.



Condition 22 vii. Security Plan & CCTV



KDS ASSOCIATES LTD
TECHNICAL ● ARCHITECTURAL ● MANAGEMENT ● CONSULTANTS
101 THE BLACKFRIARS FOUNDRY
156 BLACKFRIARS ROAD
LONDON SE1 8EN
0203 355 0775
www.kdsassociates.co.uk

Block C

 CCTV Location

Avigilon H4 Mini Drone Camera
Wall mounted with pendant mount

