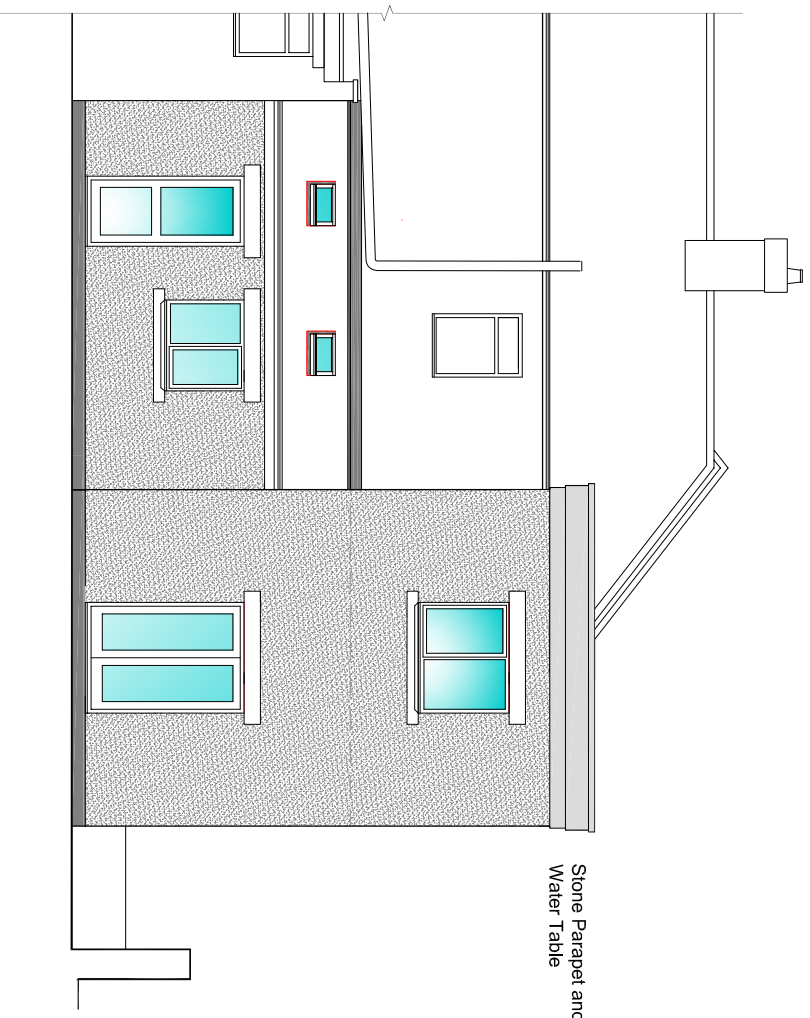
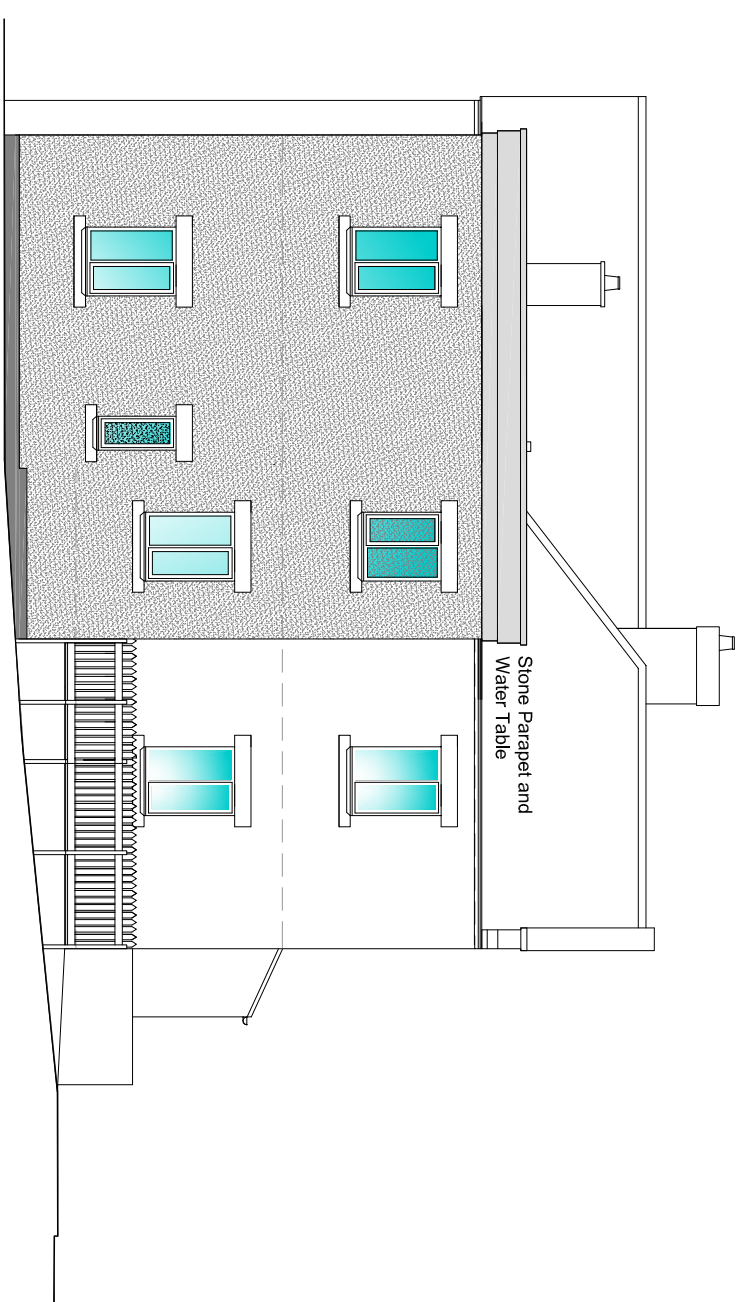


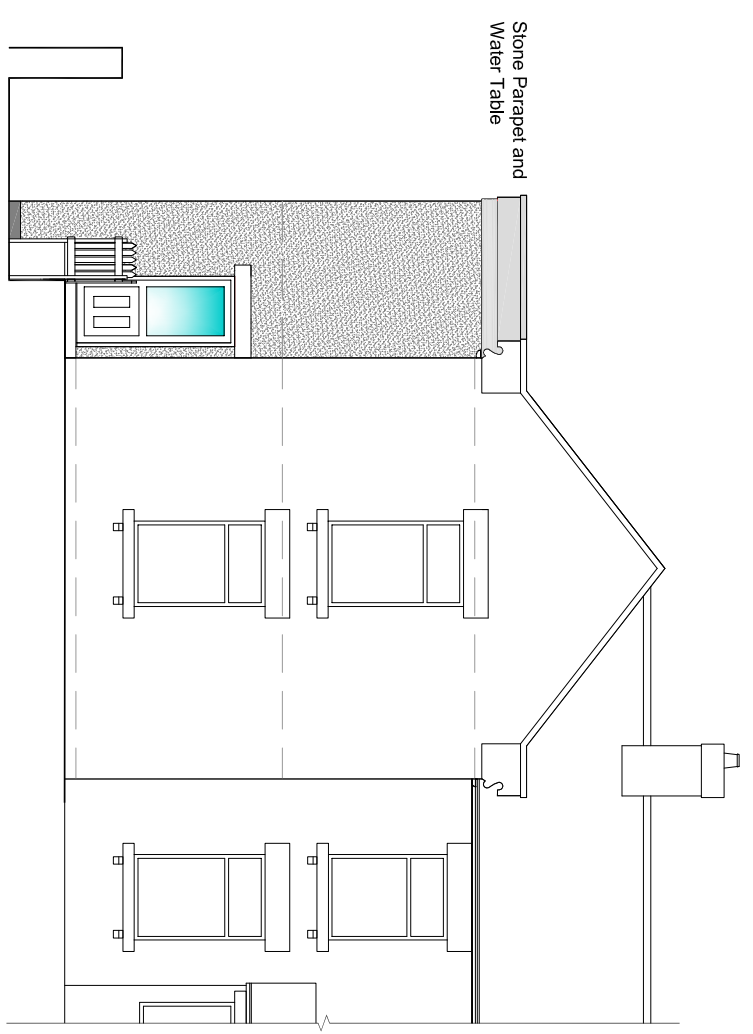
DO NOT SCALE FROM THIS DRAWING. ALL DIMENSIONS TO BE CHECKED ON SITE  
ANY ERRORS OR DISCREPANCIES TO BE REPORTED TO THE ARCHITECT  
IMMEDIATELY.  
SITE INFORMATION SUPPLIED BY THIRD PARTIES CANNOT BE GUARANTEED FOR  
ACCURACY. THE ARCHITECT HAS CONDUCTED VISUAL CHECKS AND CONFIRMATION  
BY LEGAL, SERVICE AND UTILITY DOCUMENTATION AND DETAILED  
TOPOGRAPHICAL SURVEY.  
COPYRIGHT RETAINED BY HUGH MASSEY ARCHITECTS (HMA WE LTD)



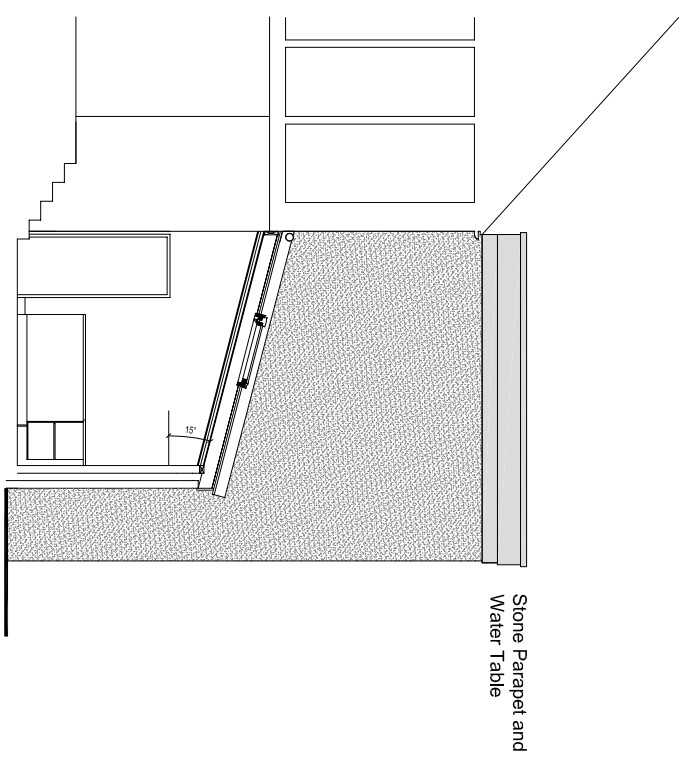
South West



South East



North East



North West

## Hugh Massey Architects, Planning & Landscape Consultants

REVISIONS	
PROJECT:	Works to No. 2 Salmon Hall Cottages, Howden-le-Wear, Crook, DL15 8BH
DRAWING:	Proposed Elevations
CLIENT:	Chris Salisbury
JOB NO.:	1674
DRAWING NO.:	200_01
REVISION:	
ORIGINATION DATE:	24-11-20
DRAWING STATUS:	Planning
CHECKED:	HM

designhaus, 205 Park Road, South Moor, Stanley, Co.Durham, DH9 7QE  
t: 01207 280095 f: 01207 280531  
e: centraladministration@hughmasseyarchitects.co.uk

SCALE: 1:100 PAPER: @A3 DRAWN: DO