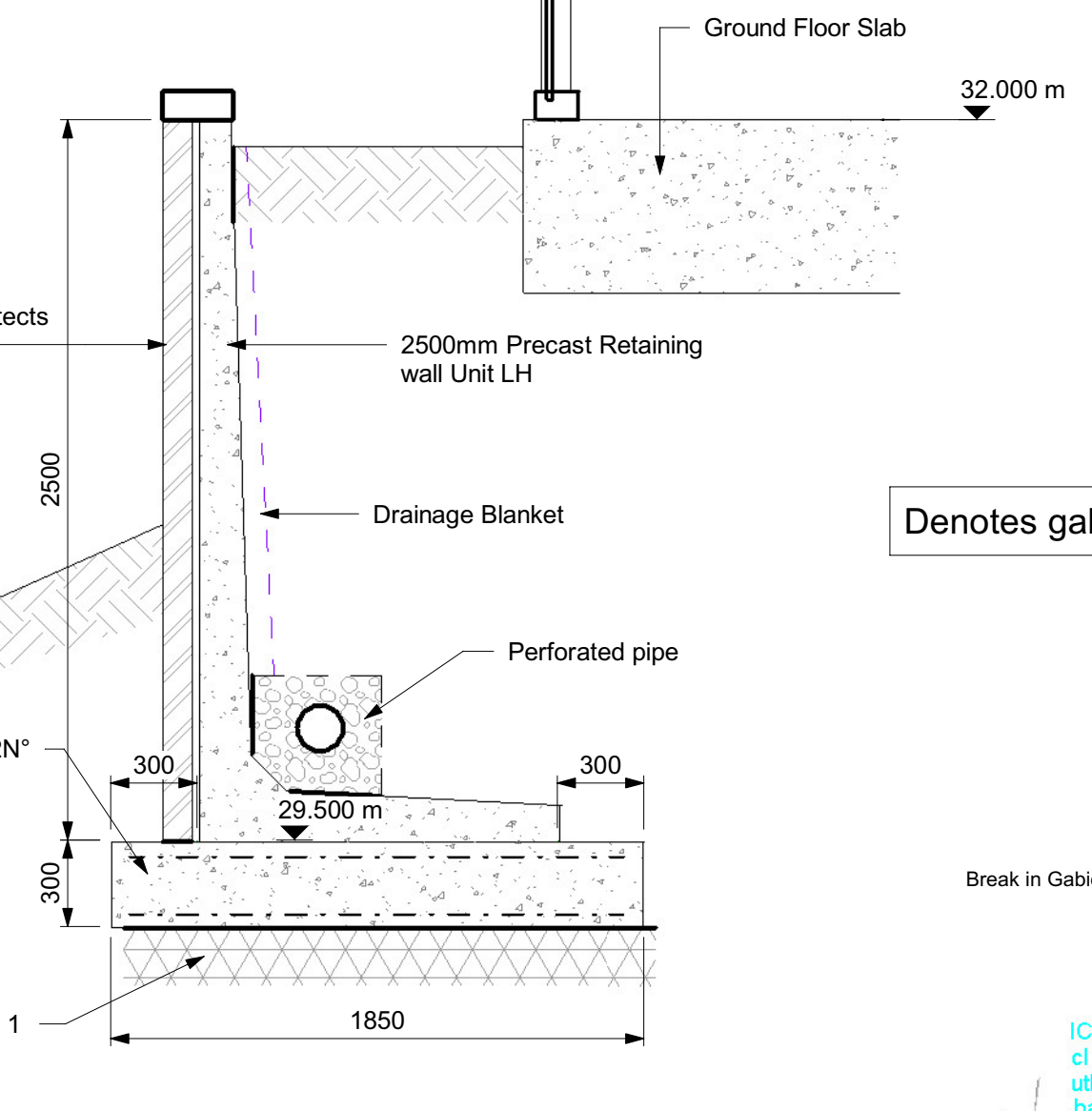
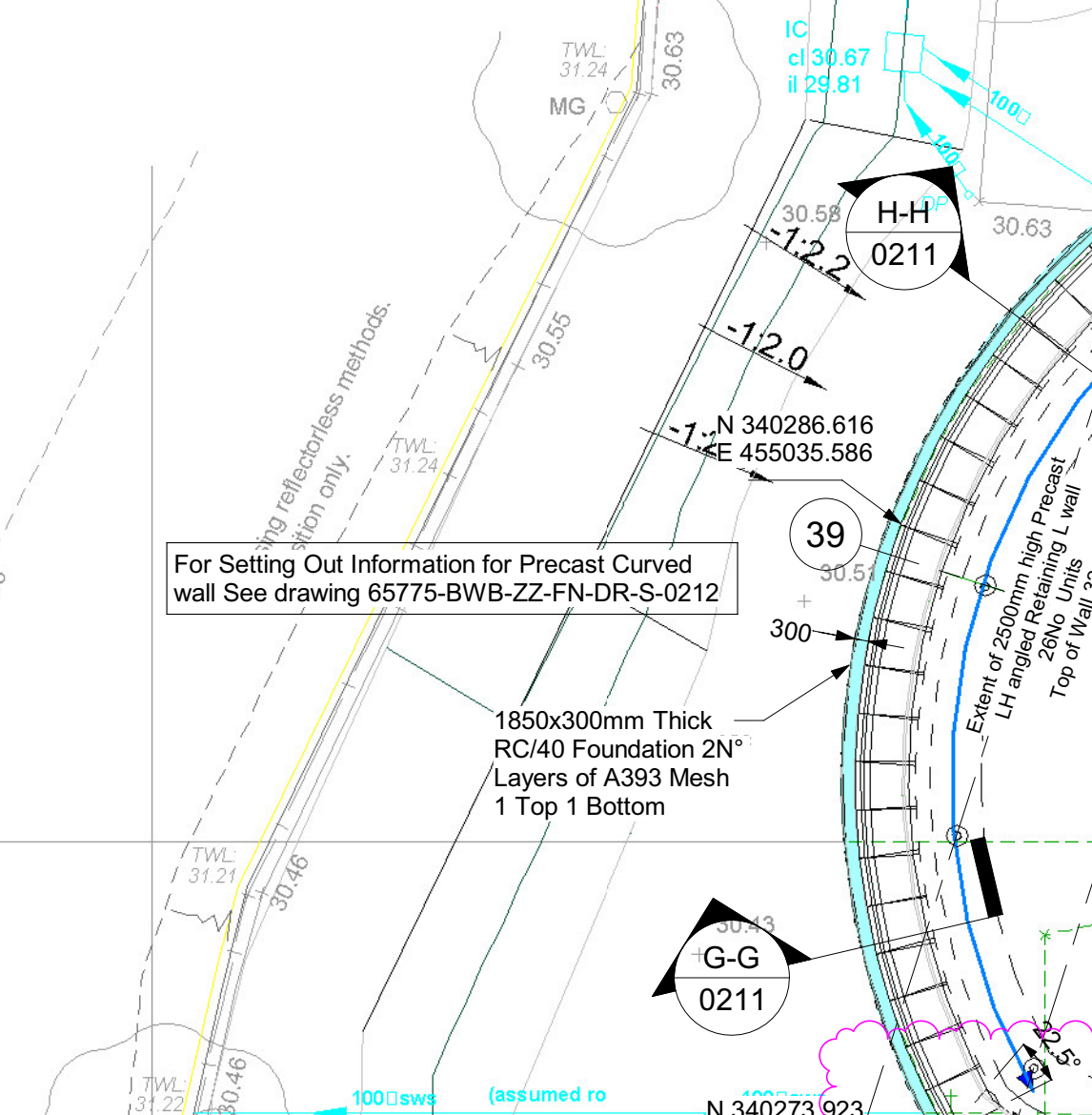


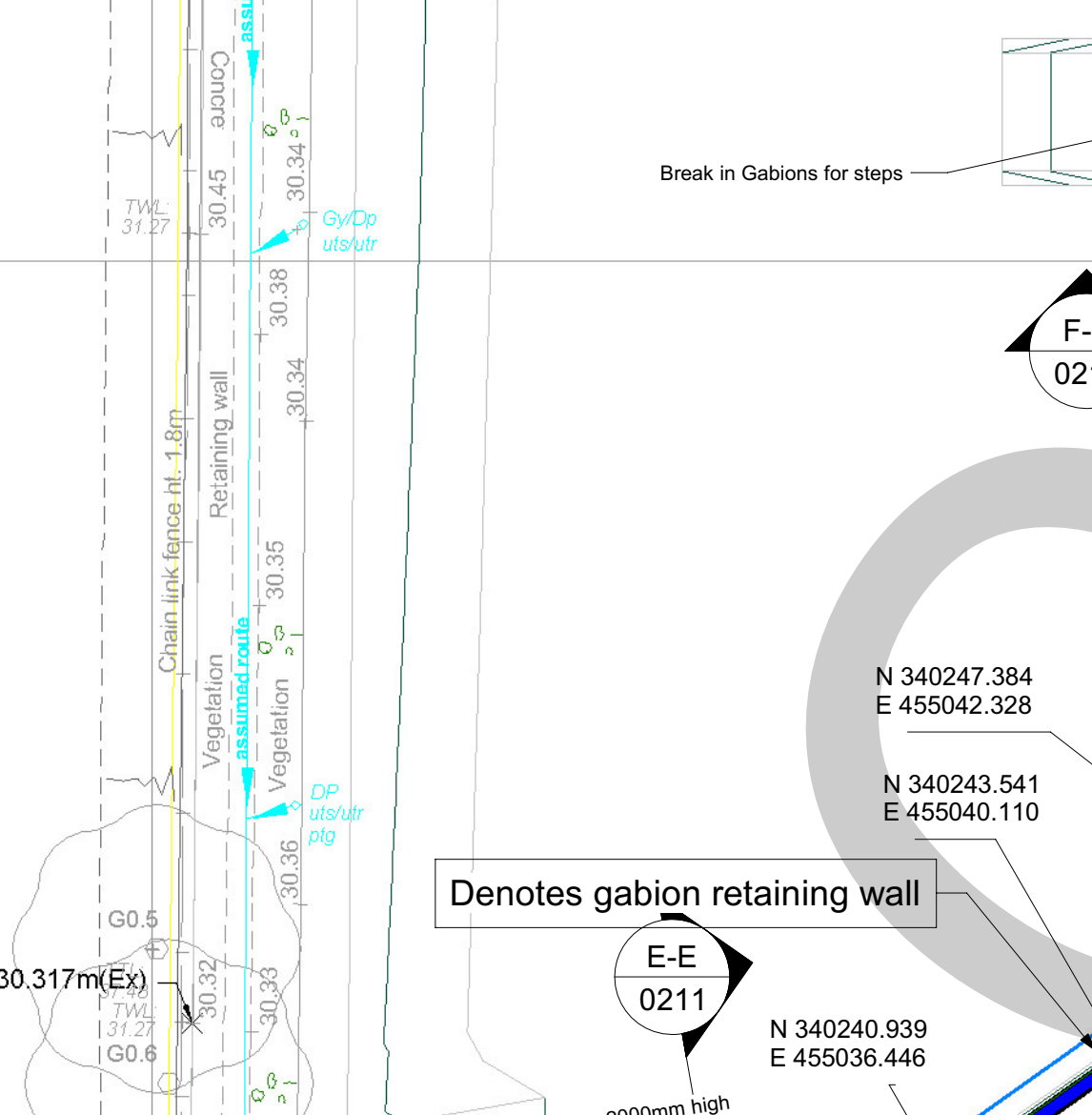
Section H-H/0211  
1: 25



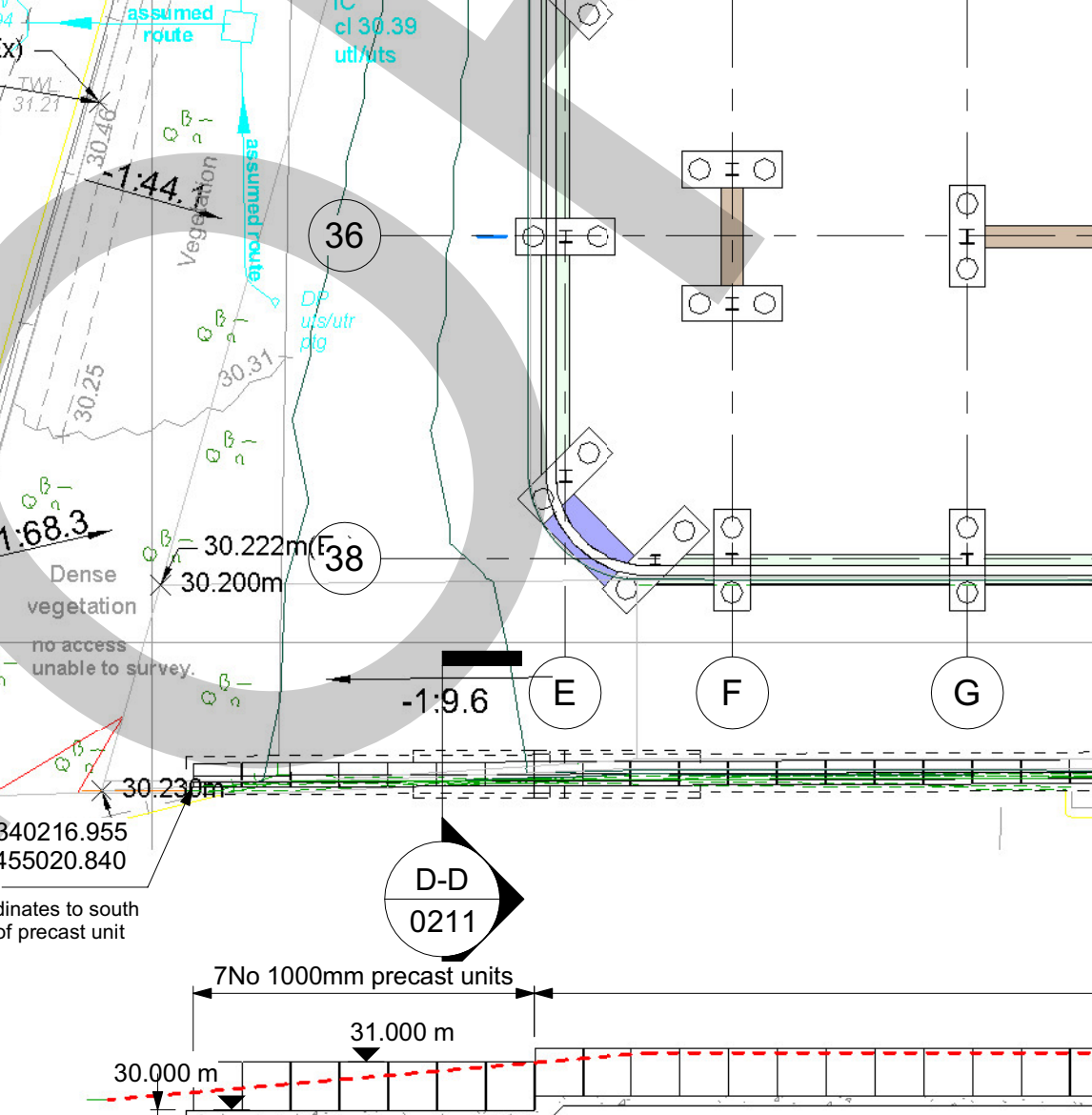
Section G-G/0211  
1: 25



Section F-F/0211  
1: 25



Section E-E/0211  
1: 25



Section D-D/0211  
1: 25



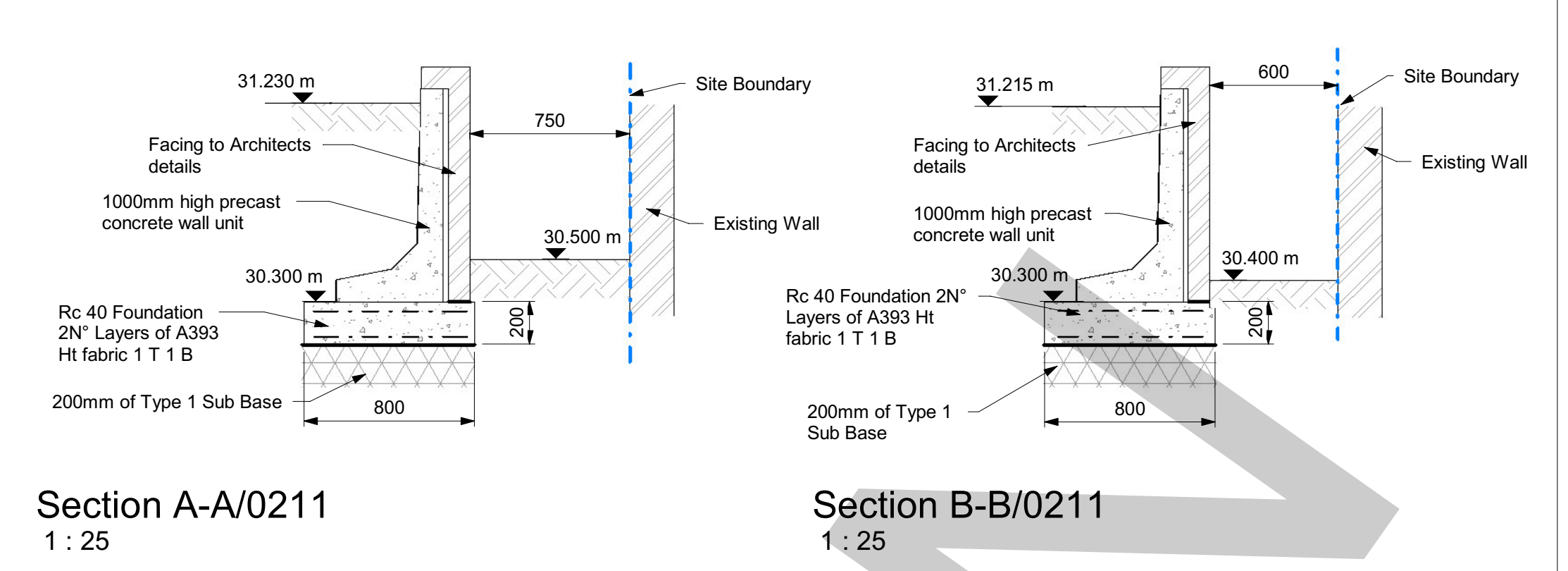
Section C-C/0211  
1: 25



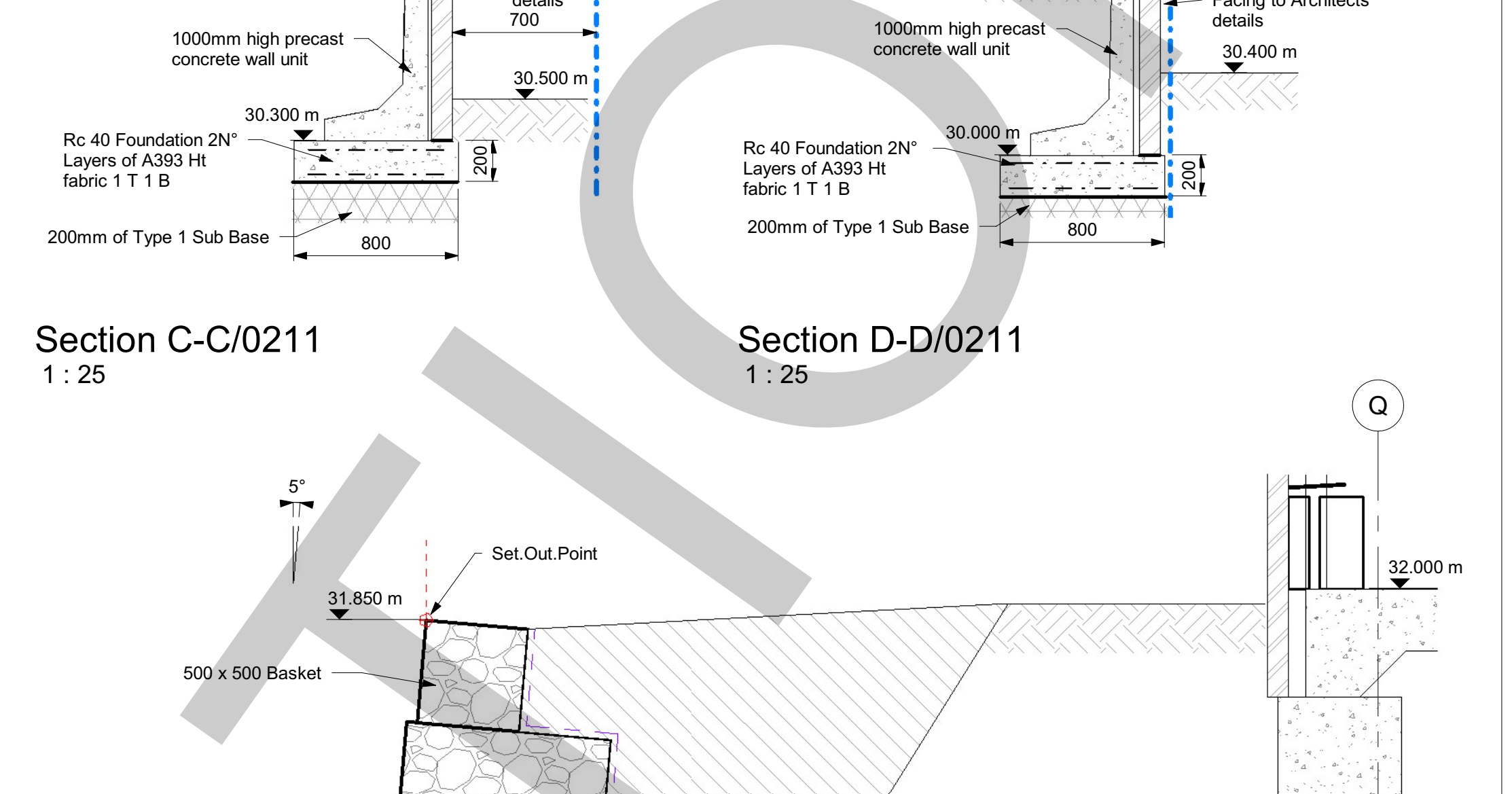
Section B-B/0211  
1: 25



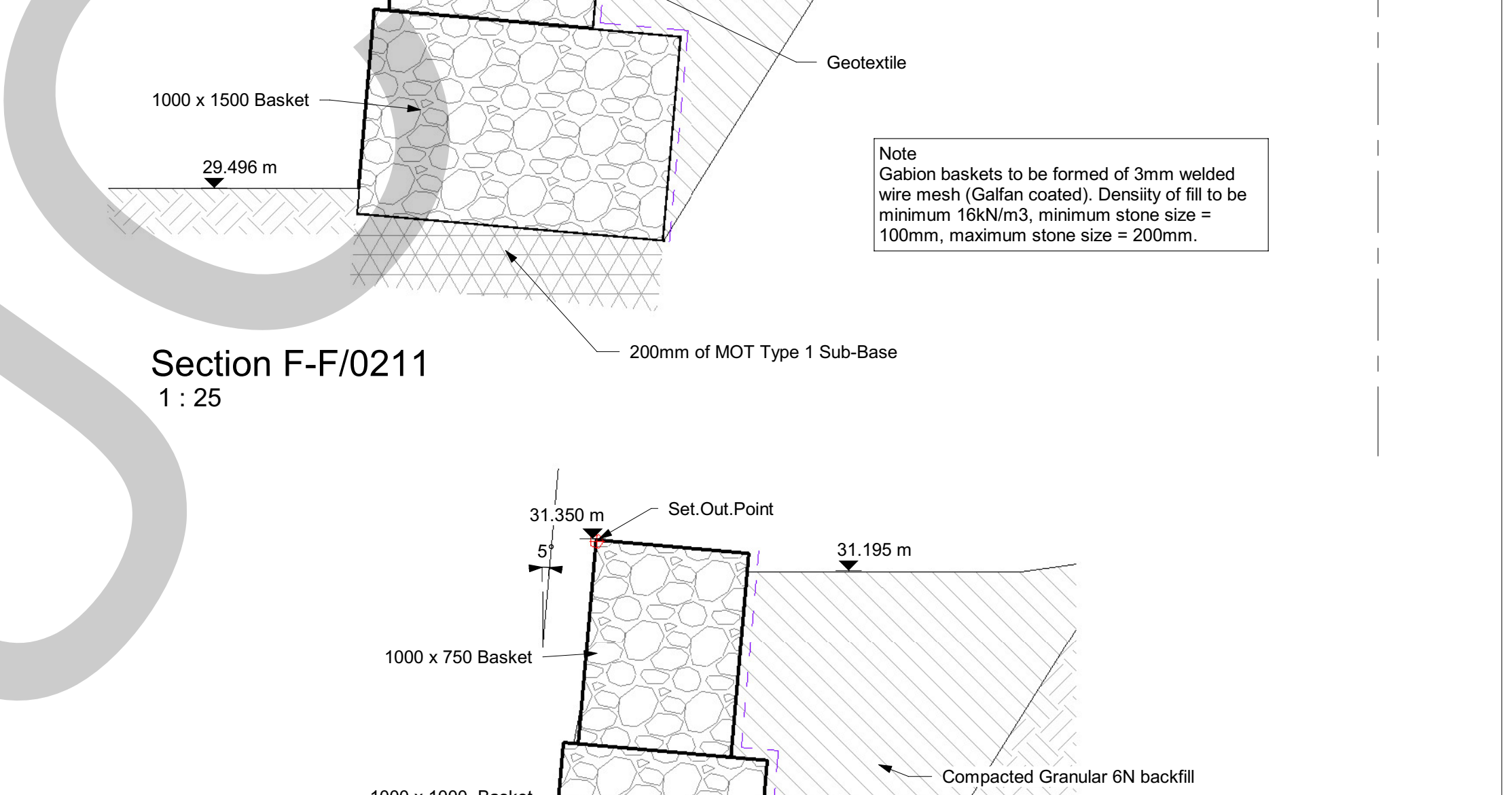
Section A-A/0211  
1: 25



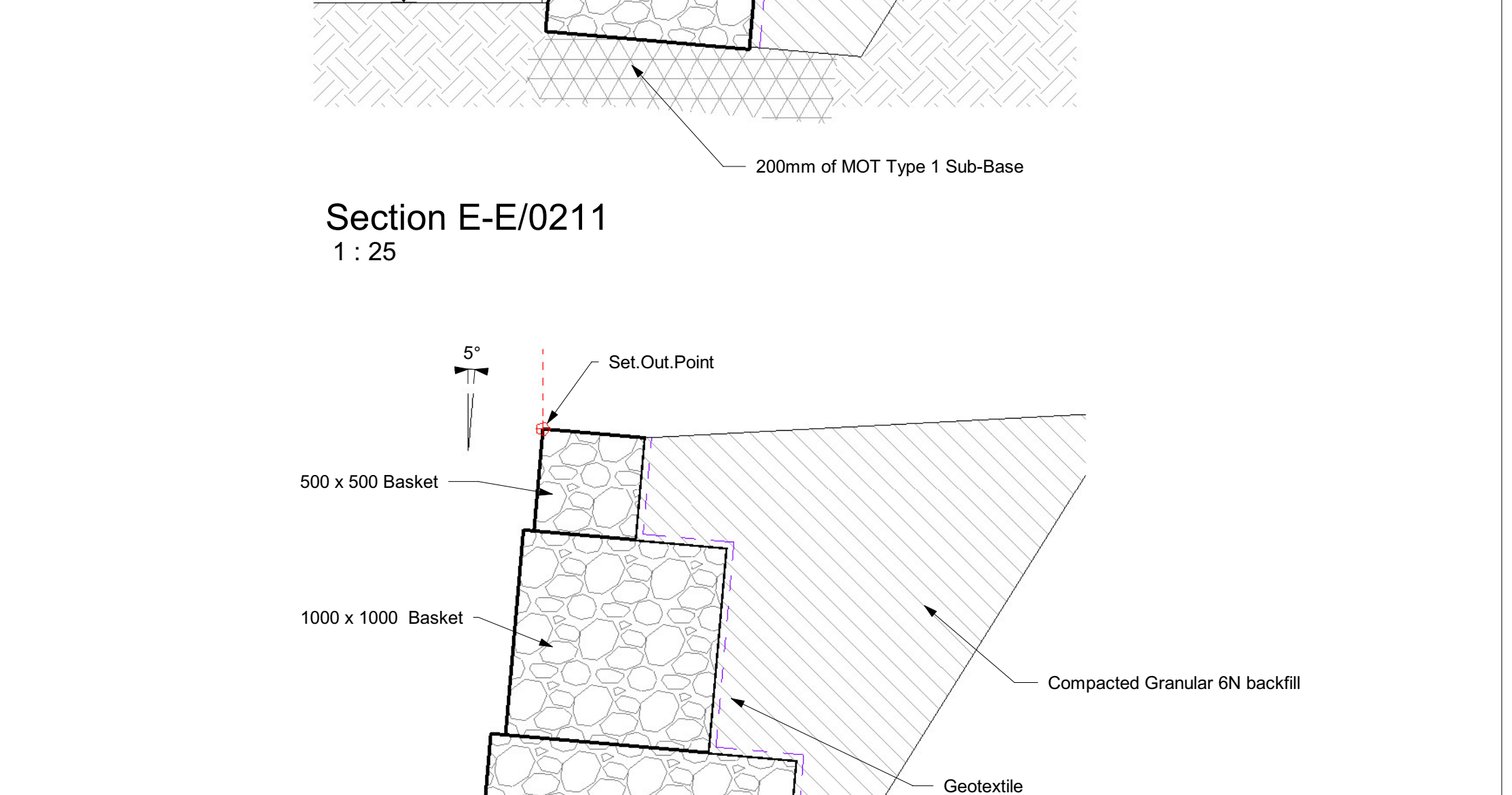
Section A-A/0211  
1: 25



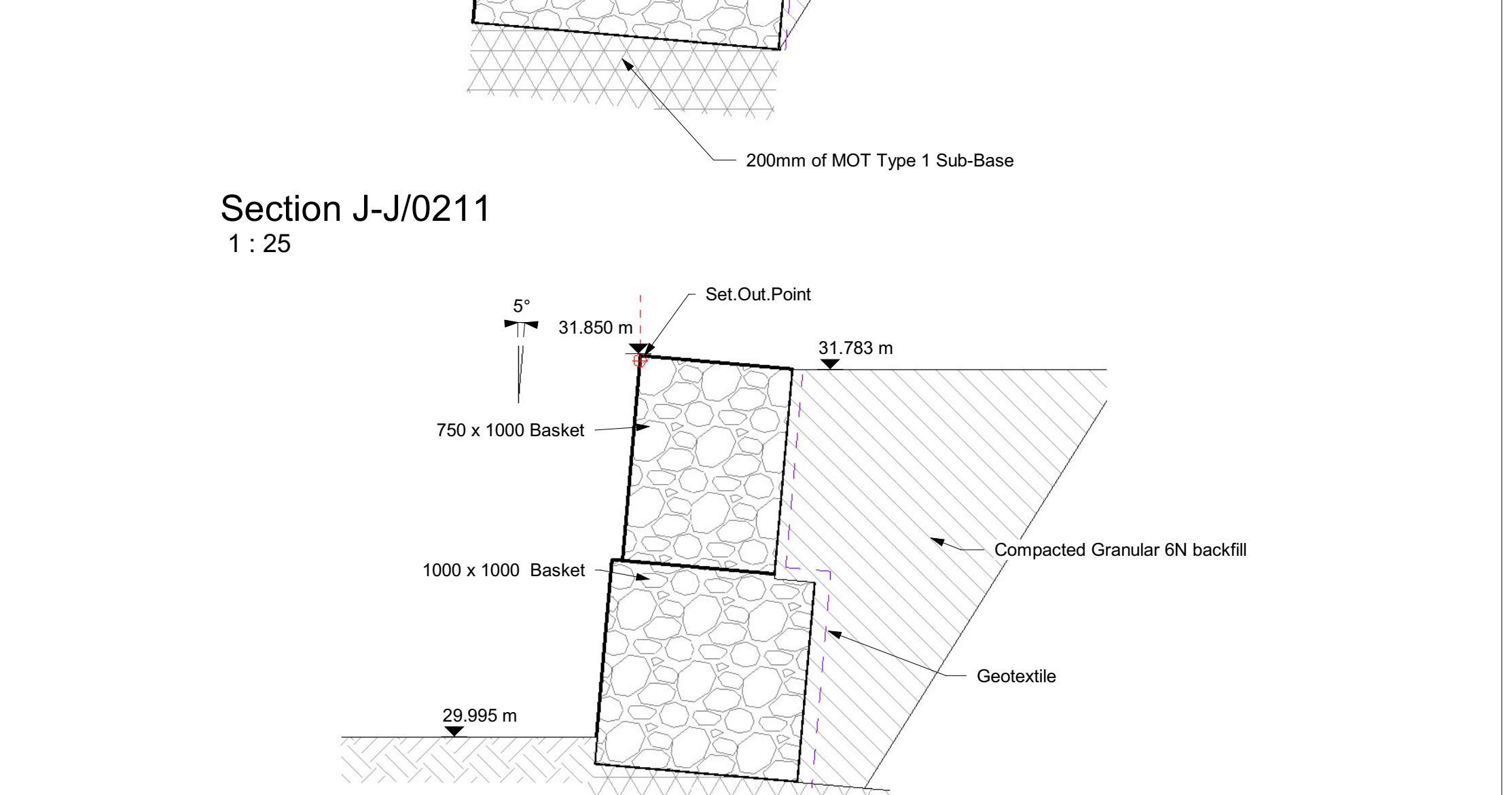
Section B-B/0211  
1: 25



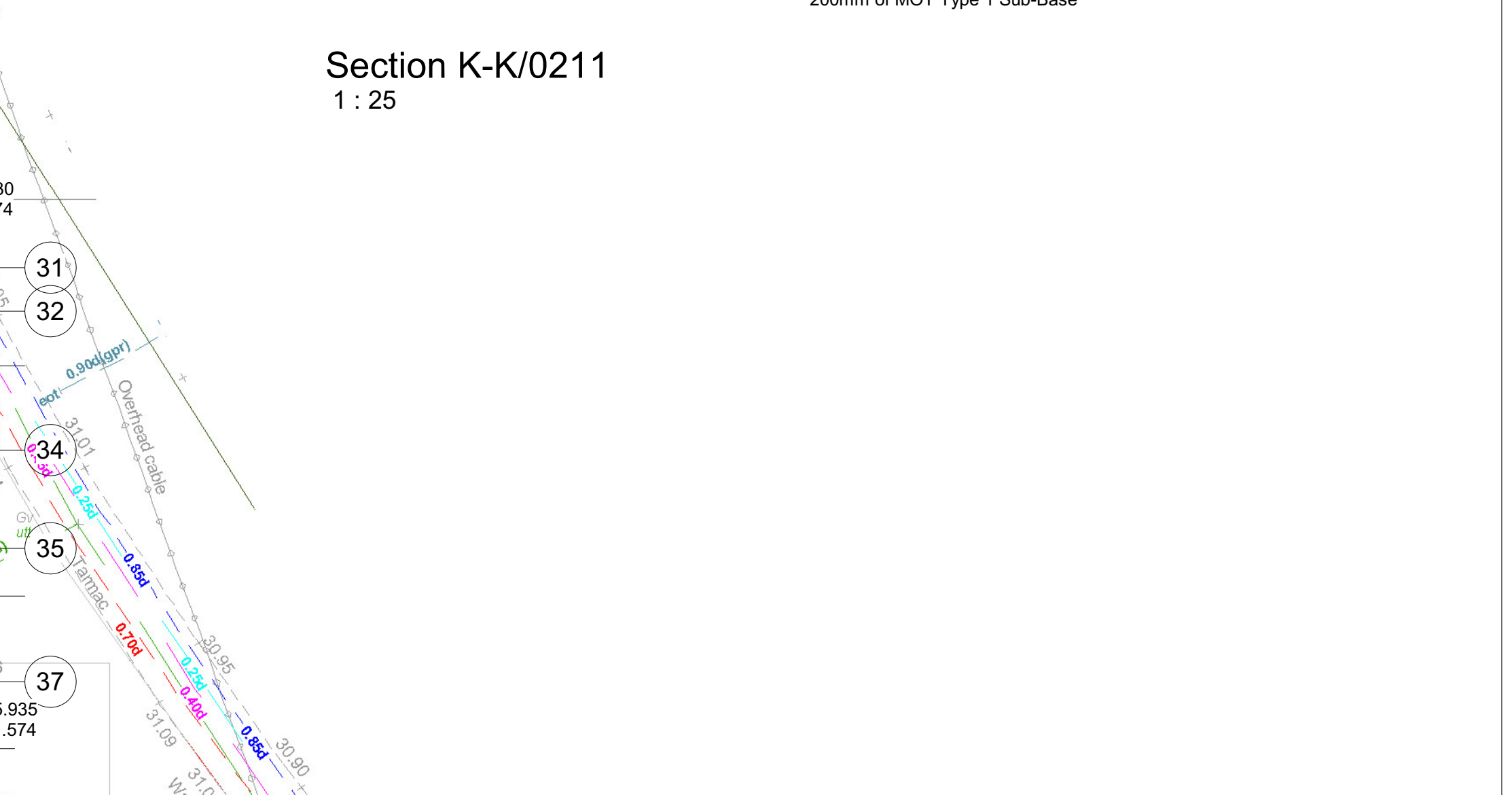
Section C-C/0211  
1: 25



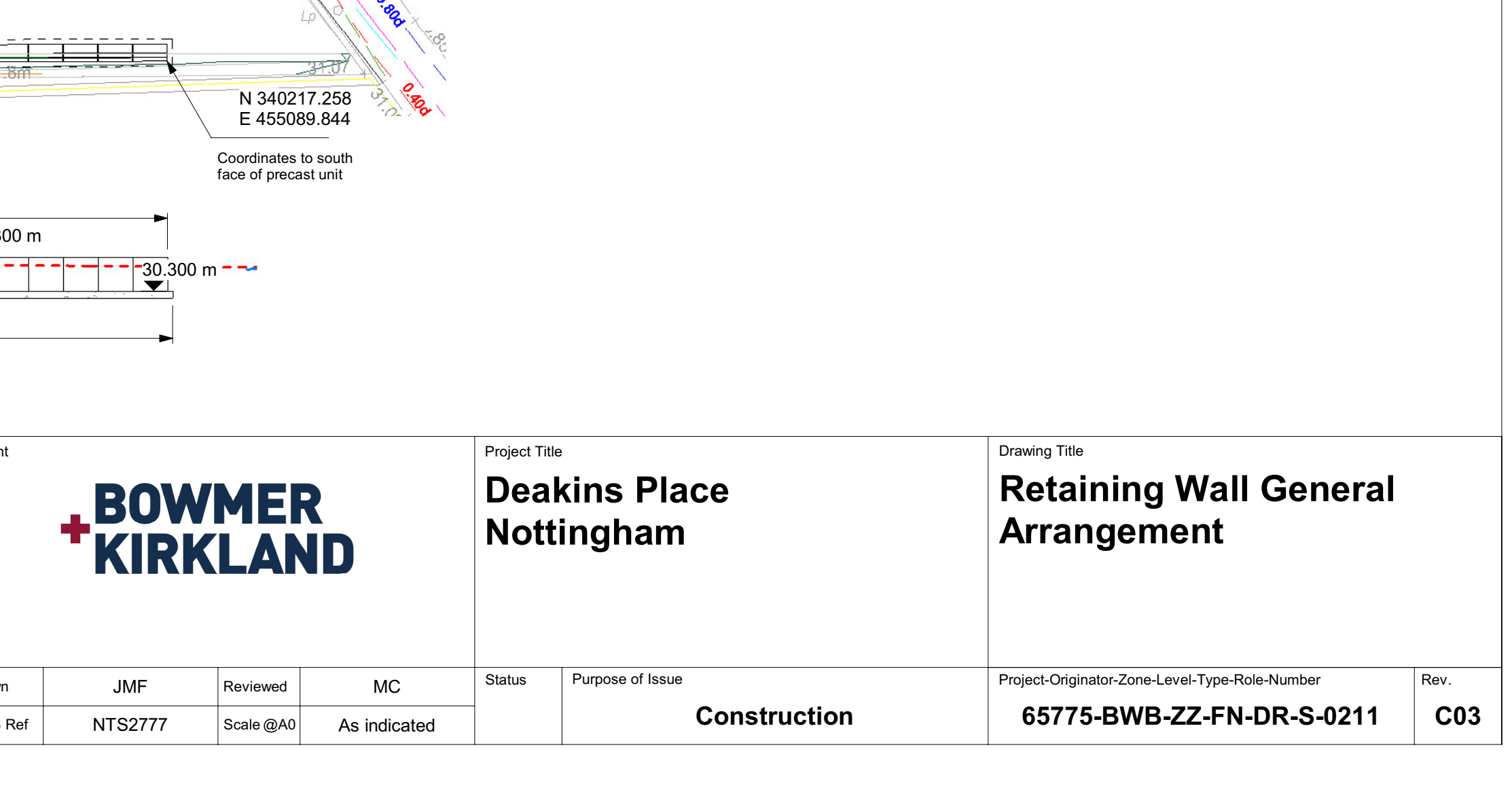
Section D-D/0211  
1: 25



Section E-E/0211  
1: 25



Section F-F/0211  
1: 25



Section G-G/0211  
1: 25

Notes  
1. Do not scale this drawing. All dimensions must be checked/verified on site. If in doubt ask.  
2. This drawing is to be read in conjunction with all relevant architectural, engineers and specialists drawings and specifications.  
3. All dimensions in millimetres unless noted otherwise. All levels in metres unless noted otherwise.  
4. Any discrepancies noted on site are to be reported to the engineer immediately.

© Copyright BWM Consulting Ltd

Rev	Date	Details of Issue / Revision	Drawn	Checked
REV 1	15.02.20	Preparation Issue	JMF	MC
REV 2	11.11.20	Gabion & precast retaining walls amended	JMF	MC
REV 3	18.11.20	Current Retainers that Remains in Proposed Units	JMF	MC
REV 4	25.11.20	Issues for Construction	JMF	MC
REV 5	19.12.20	Coordinates Updated	JMF	MC
REV 6	08.12.20	Intersection between Gabion Wall & Pre-Cast Wall Amended	JMF	MC

**BWB**  
CONSULTANCY & ENVIRONMENT  
MANAGEMENT & SURVEILLANCE

**BOWMER KIRKLAND**

Client: Birmingham (0121) 233 3322  
Leeds (0113) 233 8000  
London (020) 7407 3879  
Manchester (0161) 233 4260  
Nottingham (0115) 924 1100

Project Title: **Deakins Place Nottingham**

Drawing Title: **Retaining Wall General Arrangement**

Drawn: JMF, Reviewed: MC, Status: Construction  
BWB Ref: NTS2777, Scale: @A0, As indicated

Project Originator-Zone-Level-Type-Role-Number: 65775-BWB-ZZ-FR-DR-S-0211

Rev: C03