

NOTES

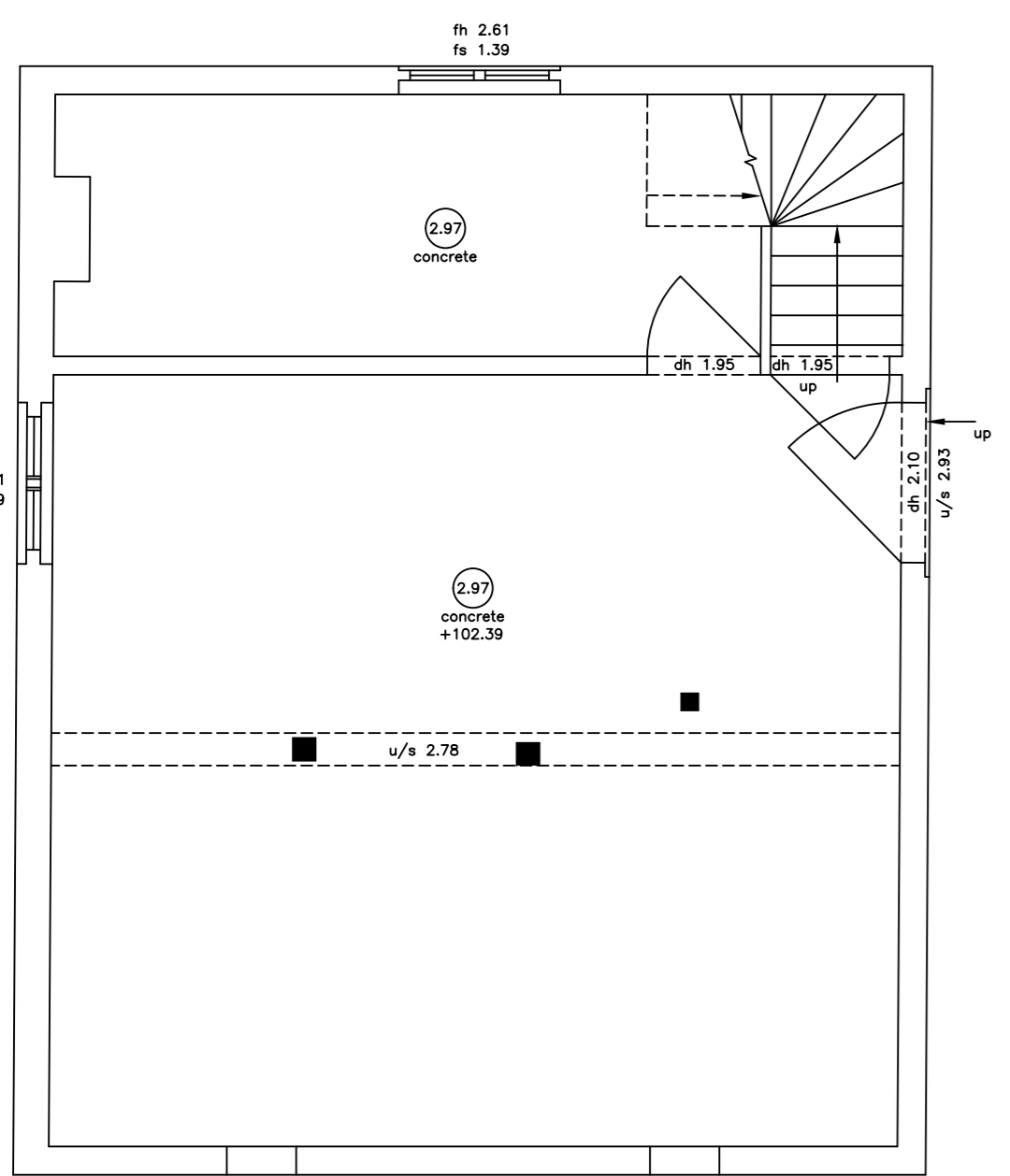
GENERAL NOTES :-
 ALL LEVELS ARE IN METRES RELATED TO AN ASSUMED DATUM LOCATED ON ST02 AS SHOWN (value 100.00).
 THIS DRAWING HAS BEEN PRODUCED WITH A PLOT SCALE ACCURACY OF 1:50

BUILDING SURVEY KEY :-

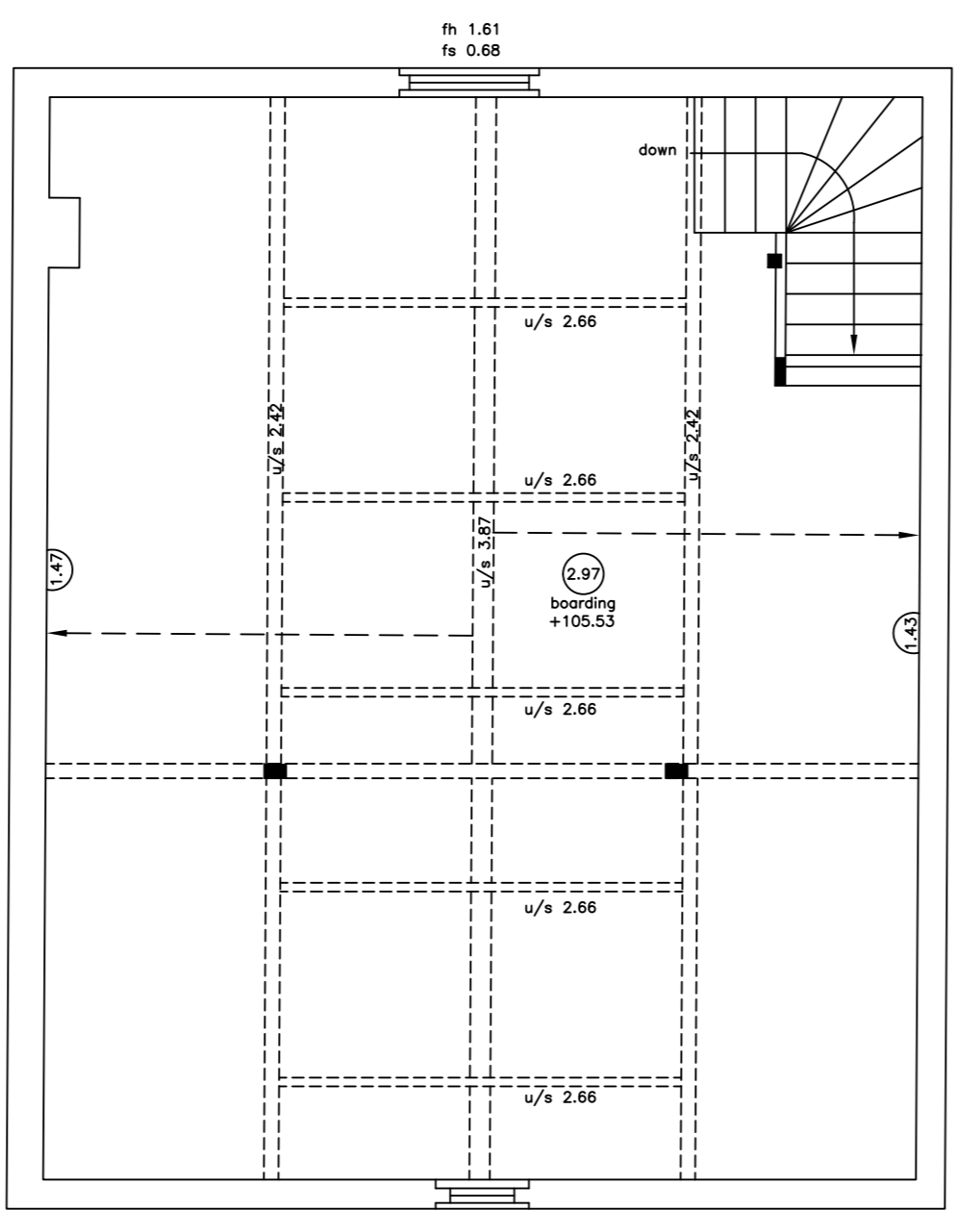
(2.3) - room height	hwt - hot water tank
1/2 - floor boards	ic - inspection cover
ø - pipe diameter	il - invert level
ø/b - air brick	m/c - manhole cover
ab - alarm box	OSBM - ordnance survey bench mark
ah - arch head height	q/til - quarry tiles
bd - back drop	rad - radiator
bk - brick	rl - roof light
conc - concrete	rep - rain water pipe
cr - cable riser	rfc - roof filled chamber
cb - fuse box	sh - floor to sill height
dh - door height	sp - arch springing point height
dp - depth	sp - soil pipe
el/mtr - electricity metre	sus.c - suspended ceiling
elec - electricity	svp - soil vent pipe
f/p - fire place	TL01 - heated towel rail
fh - floor to head height	TBM - temporary bench mark
fl - floor level	tl - threshold level
fs - floor to sill height	top - top of pipe
g/mtr - gas metre	top - top of tank
gr - gas riser	u/s - underside height
hd - hand dryer	UL - unable to lift
htr - heater	vp - vent pipe
	wf - water fountain
	wfc - water filled chamber
	wp - waste pipe

SERVICES KEY :-

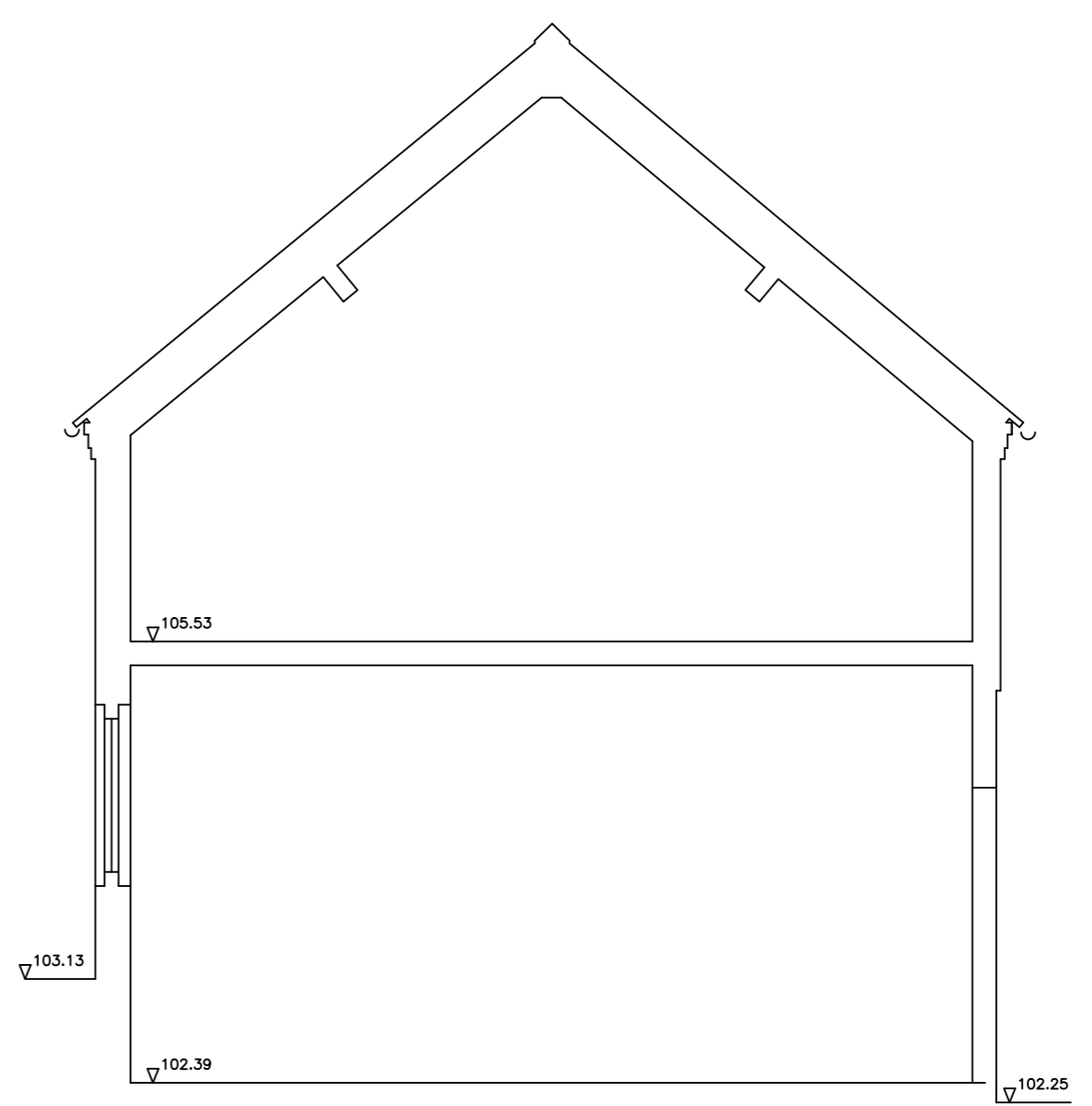
strip light	AK	alarm keypad
light	IL	intercom
wall light	IN	alarm control panel
EML	ACP	speaker
spot light	PROJ	projector
pull cord	CCTV	closed circuit tv
vent/extractor	SP	sensor
switch	NP	network point
light switch	NC	coolaid aerial
fused switch	TV	smoke detector
isolator switch	SD	heat detector
cooker switch	FA	fire alarm siren
fuse	BG	fire breakglass
blank socket	B	fire sprinkler
single socket	BS	fire blanket
double socket	WFE	water fire extinguisher
ceiling socket/fuse/switch	CFE	co2 fire extinguisher
thermostat	TFE	powder fire extinguisher
card access point (swipe card)	TFE	fire extinguisher
emergency door release	TAZ	fire alarm control panel



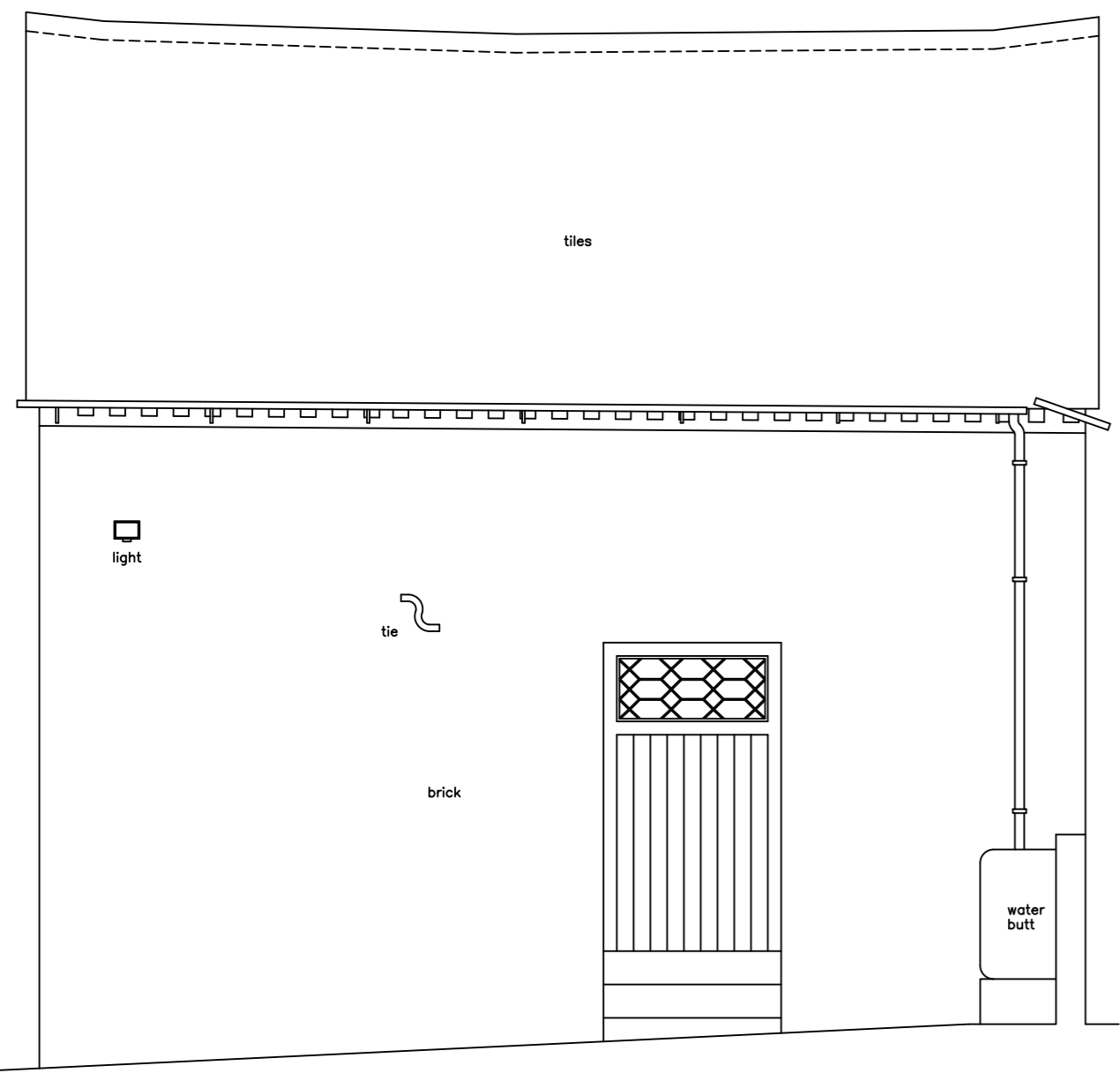
**GROUND FLOOR PLAN
BARN**



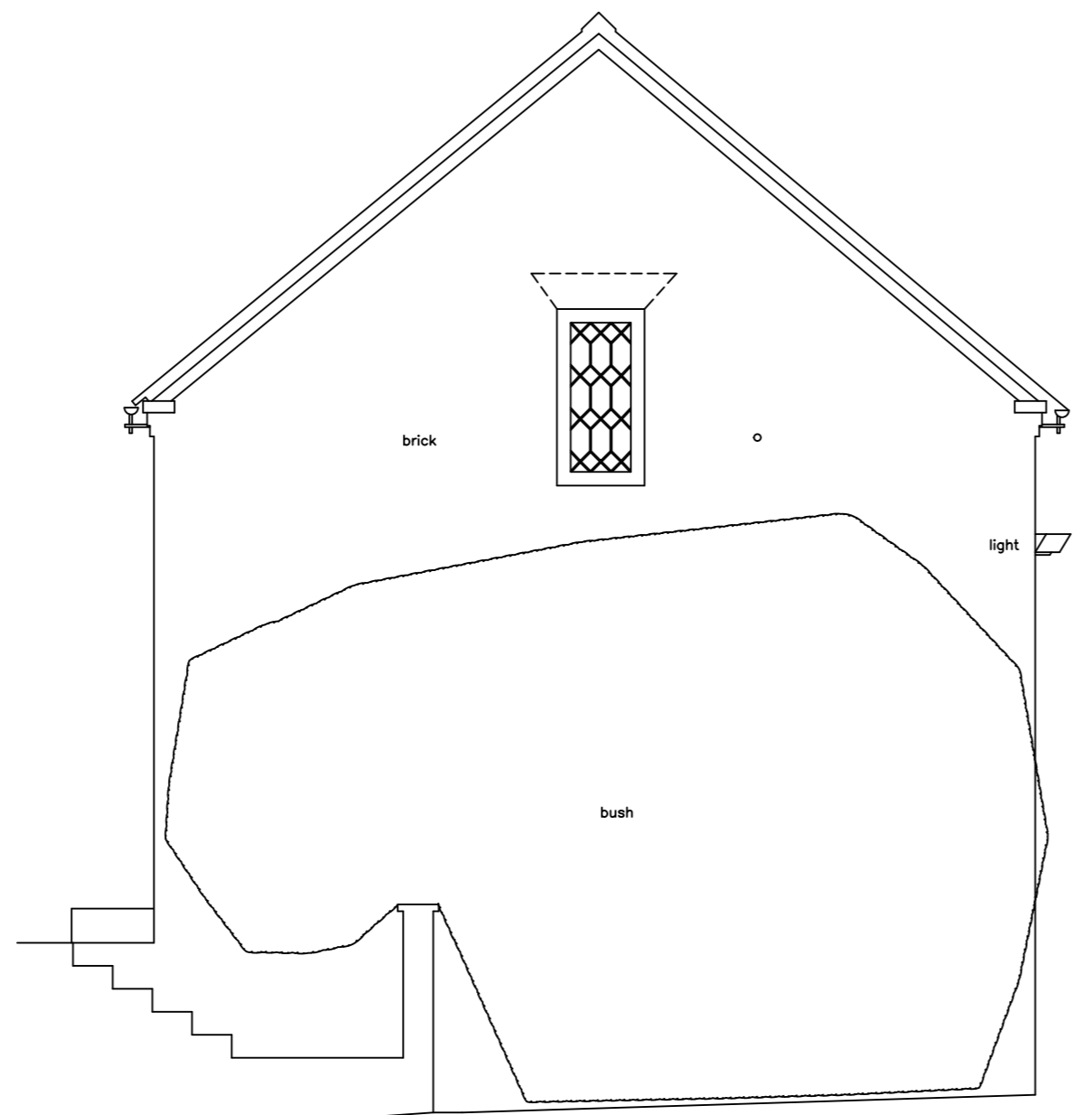
**FIRST FLOOR PLAN
BARN**



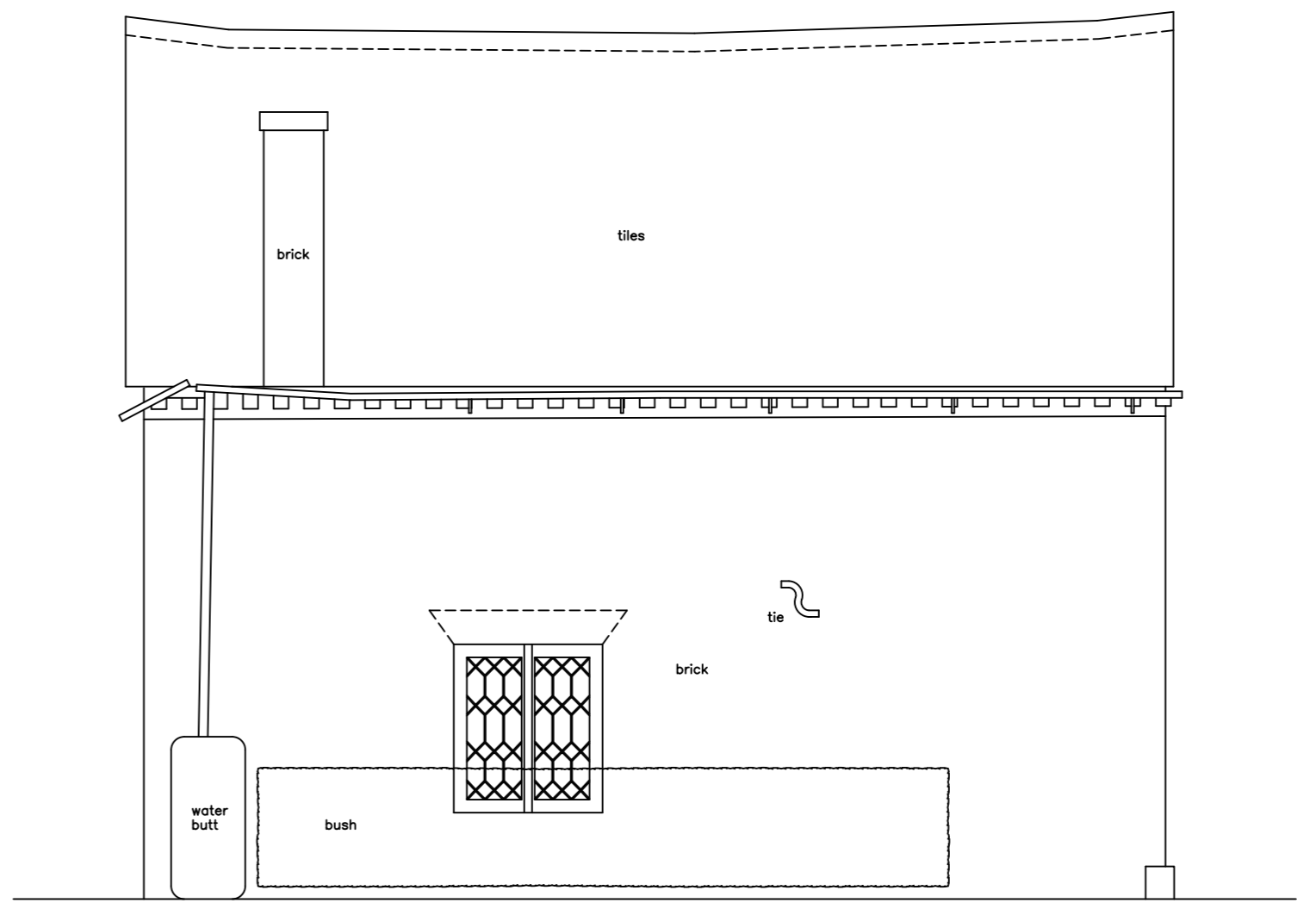
**SECTION E-E
BARN**



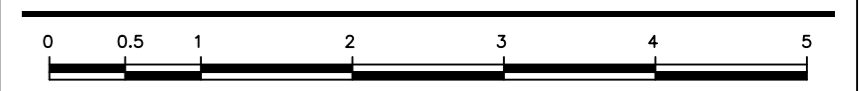
**EAST ELEVATION
BARN**



**SOUTH ELEVATION
BARN**



**WEST ELEVATION
BARN**



MIDLAND SURVEY LTD

HEAD OFFICE
 Cromwell House, Westfield Road, Southern, Warwickshire, CV47 0JH.
 Tel: 01926 810811 Fax: 01926 810812
 E-Mail: mail@midlandsurvey.co.uk
 www.midlandsurvey.co.uk

Client: JOHNSON DESIGN PARTNERSHIP LTD
 Project: THE OLD RECTORY, EASTHOPE, MUCH WENLOCK, SHROPSHIRE, TF13 6DN
 Title: BARN FLOOR PLANS, ELEVATIONS AND SECTIONS
 Date: MARCH 2020 Revisions:
 Scale: 1:50/BA1
 Dwg No: 35887/5
 Surveyor: EP
 Checked: JMP

**TOPOGRAPHICAL (LAND) SURVEYORS / UTILITY SURVEYORS
 BUILDING MEASUREMENT SURVEYORS / 3D LASER SCANNING**



© Copyright Midland Survey Ltd. Reproduction of this information is prohibited without written authorisation from Midland Survey Ltd.