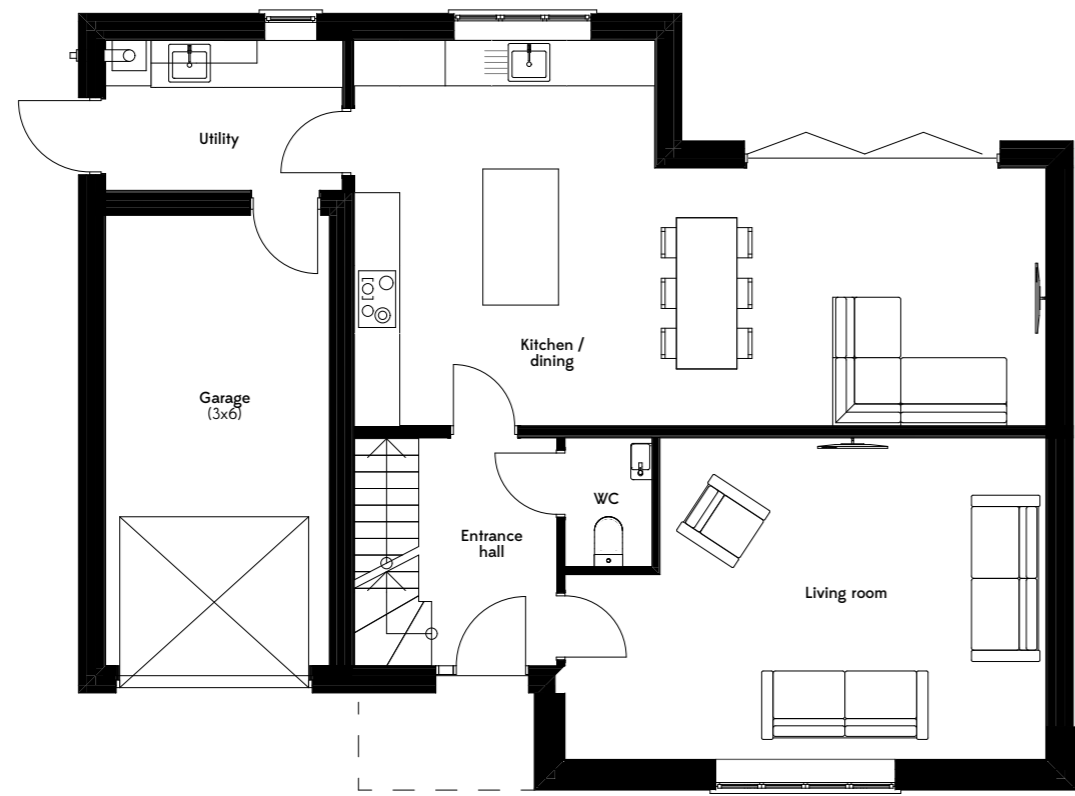


Elevation / Front



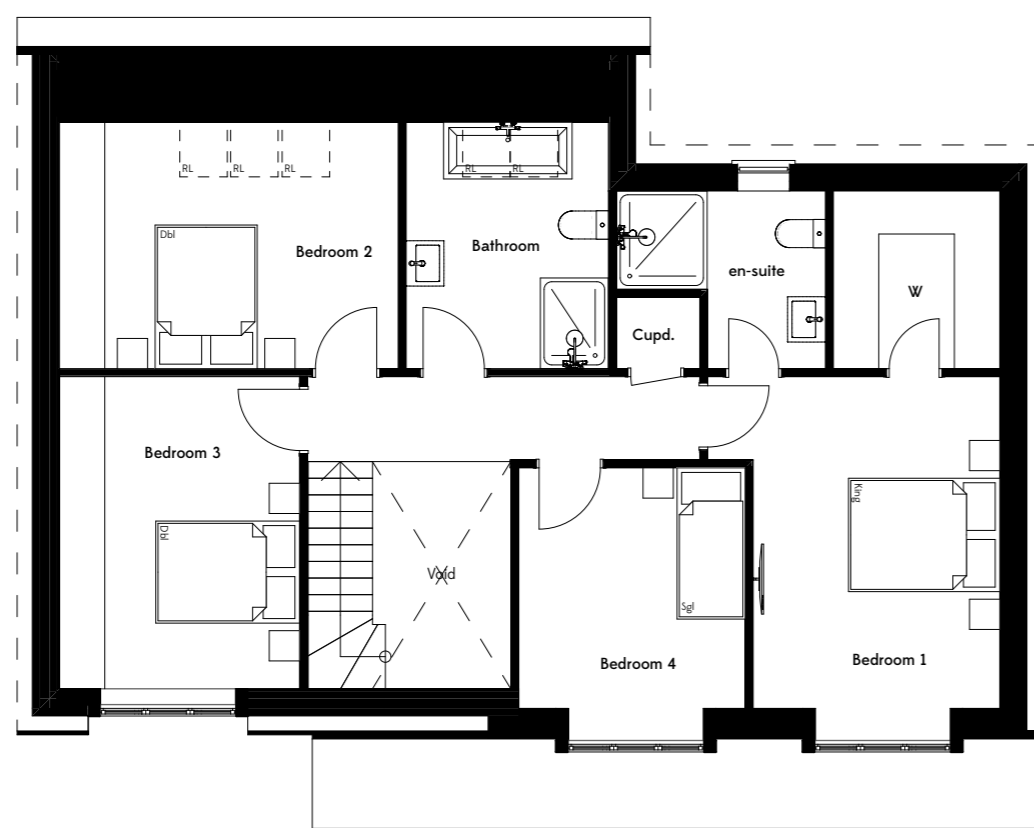
Elevation / Rear



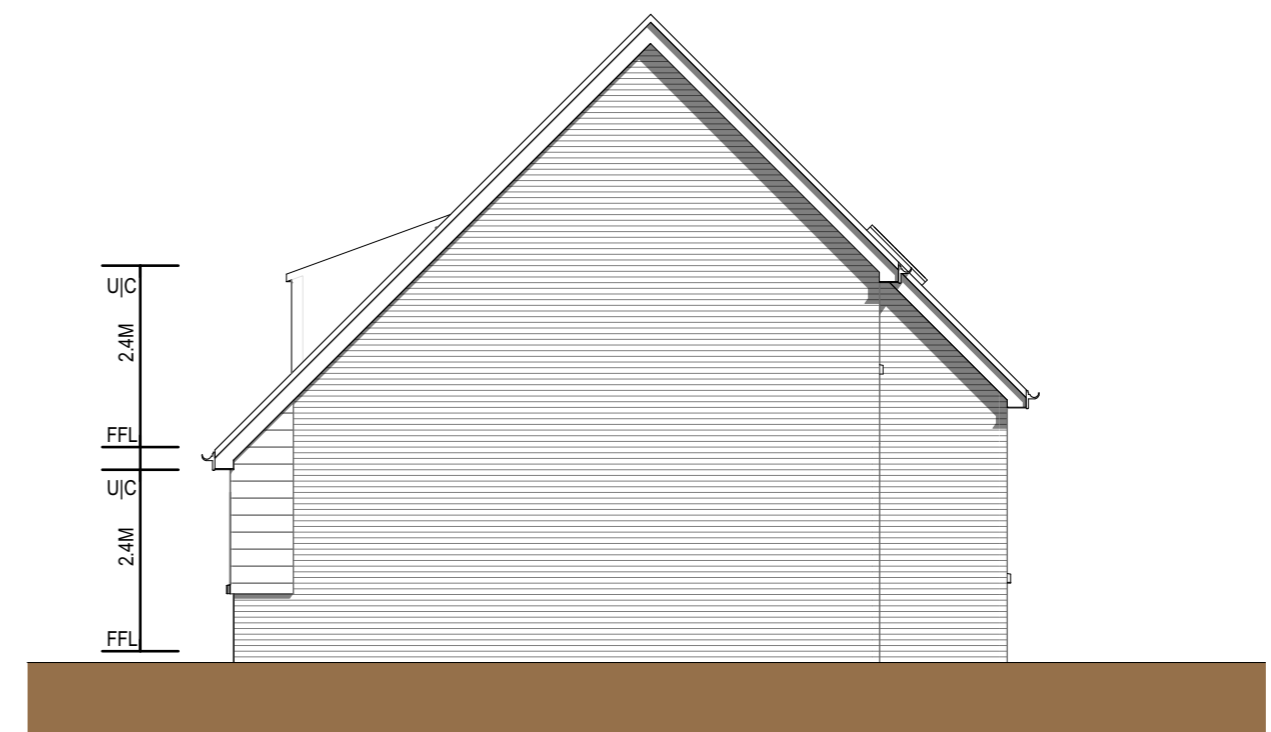
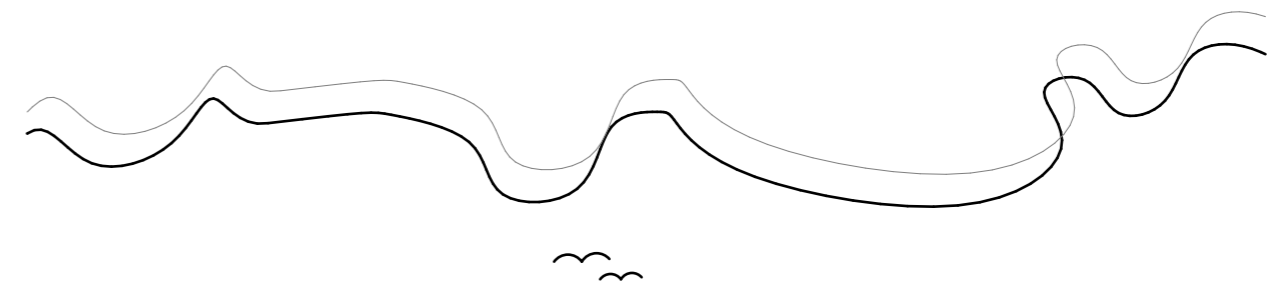
Plan / Ground

**MATERIAL DESIGN SCHEDULE:**

ROOF COVERING	MARLEY EDGEMERE TILES DORMER ROOF ELEMENT TO BE CLAD IN PRE-TREATED ZINC TO APPROVED DETAIL WITH RENDERED CHEEKS.
WALL COVERINGS	COMPRISING - MULTI STOCK FACING BRICKWORK + PLINTH DETAIL + STAINED BOARD CLADDING EITHER NATURAL OAK OR BLACK STAINED HEAT TREATED SOFTWOOD - ALL TO APPROVED SAMPLE
WINDOWS AND DOORS	FLUSH CASEMENT WINDOWS AND DOORS + COLOUR ANTHRACITE GREY WINDOWS AND DOORS TO BE HIGH PERFORMANCE, DOUBLE GLAZED. GARAGE DOORS TO BE UP AND OVER. FRONT ENTRANCE DOORS TO BE HIGH PERFORMANCE COMPOSITE.
DRAINAGE	ALL NEW FOUL DRAINAGE TO BE CONNECTED INTO NEW SYSTEM ON-SITE. NEW STORM DRAINAGE TO ATTENUATION + WATER COURSE. REFER TO MESSRS PATRICK PARSON DESIGN DRAWINGS.
RAINWATER GOODS	BLACK HALF ROUND GUTTER AND DOWN PIPE SYSTEM
FASCIA   BARGEBOARD   SOFFITS	TO BE FORMED GENERALLY IN UPVC WITH BARGEBOARDS FORMED IN STAINED TIMBER

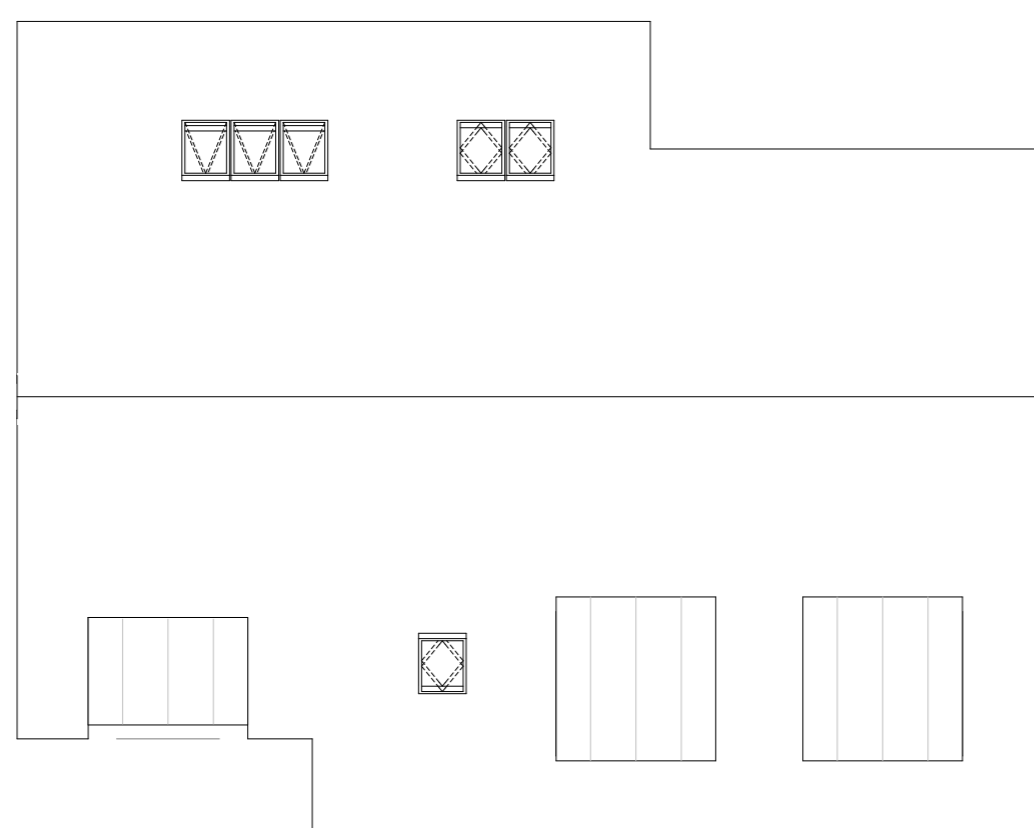
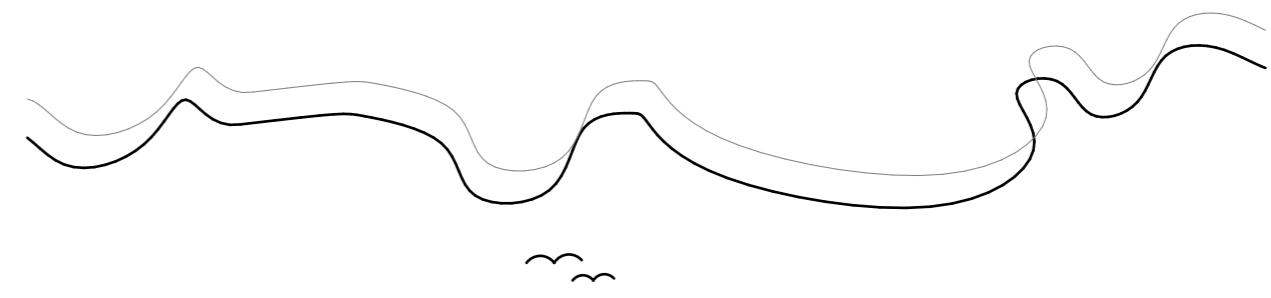


Plan / First



Elevation / Side

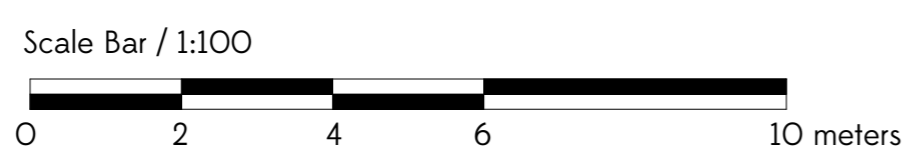
Net floor area excluding garage / G 81 + F 90 = 171m<sup>2</sup> = 1,840 ft<sup>2</sup>  
 Net floor area of garage / 18m<sup>2</sup> = 194 ft<sup>2</sup>



Plan / Roof



Elevation / Side / Garage



Notes:  
This drawing is prepared for the purposes of a planning application and to show design intent only. The information contained herein must not be used for costing, construction, engineering or any other purposes without agreement in writing from Massey Ltd.

**Revisions**

Rev.	Date	Amendment	Int.	Ch'kd
A	231118	PLANNING APP ISSUE	NBC	NBC
B	020319	GARAGE SIZES UP-DATED TO MEET HIGHWAY FEEDBACK	NBC	NBC
C	050121	GENERAL LAYOUT & FACADE UPDATED TO SUIT NEW SITE LAYOUT	LM	LM