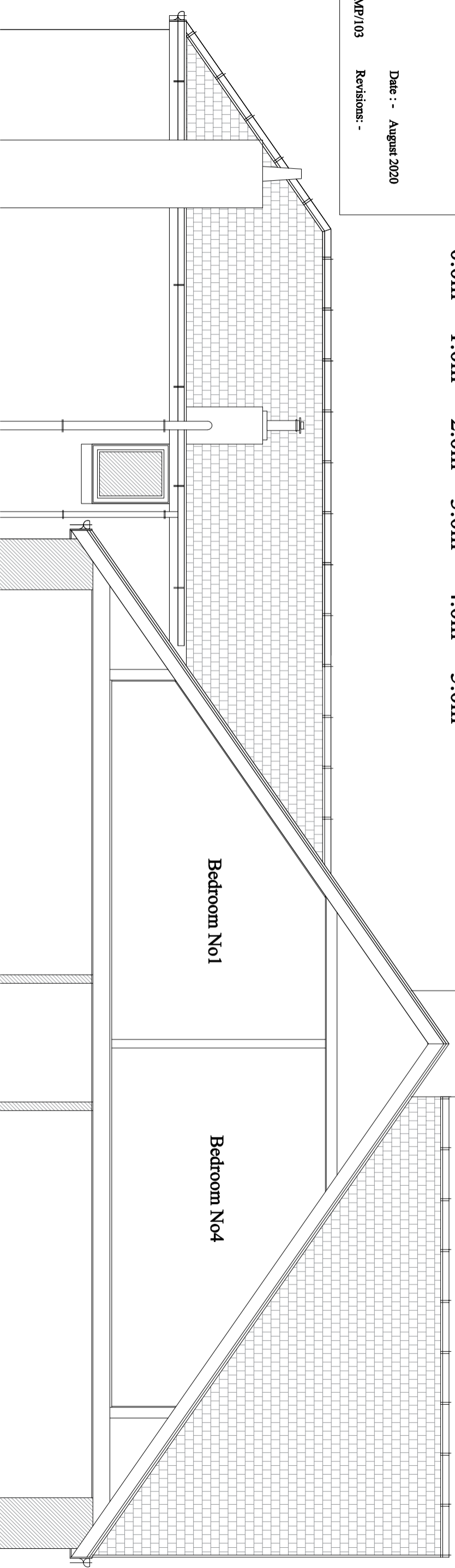


Scale Bar

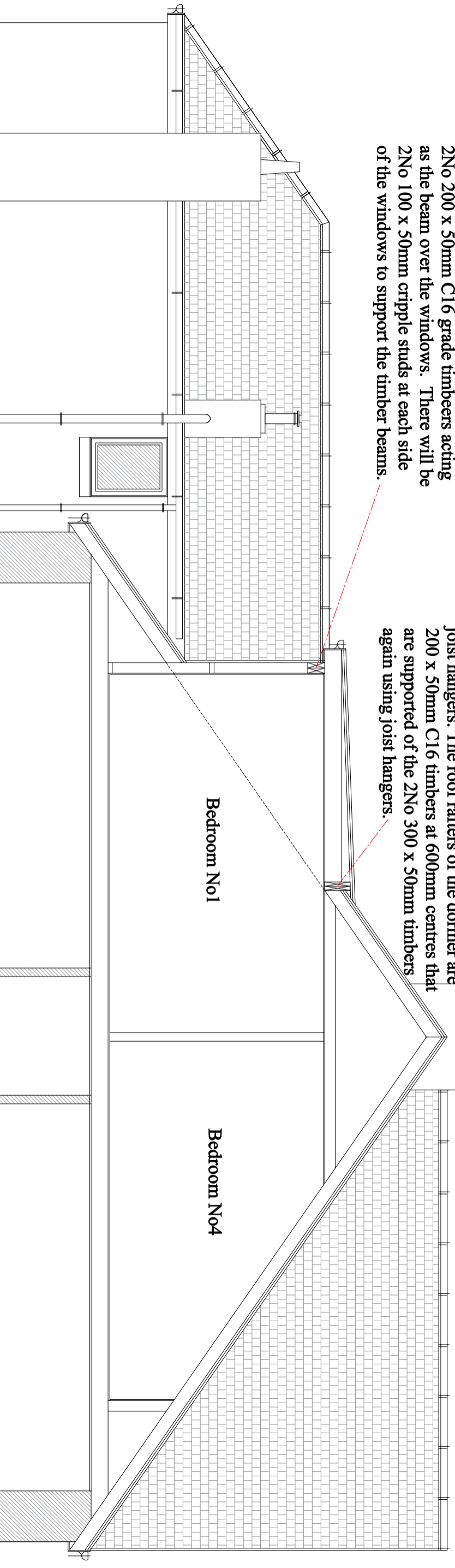
0.0m 1.0m 2.0m 3.0m 4.0m 5.0m



EXISTING SECTION THROUGH ROOF

The outside face of the dormer roof rafters are supported by 100 x 50mm C16 grade timber studs at 450mm centres where there is an external wall. Where there is a window opening the roof rafters are supported by 2No 200 x 50mm C16 grade timbers acting as the beam over the windows. There will be 2No 100 x 50mm cripple studs at each side of the windows to support the timber beams.

2No300 x 50mm C16 timbers acting as support to flat roof rafters of dormer roof. The 2No 300 x 50mm timbers are supported off the doubled up roof rafters either side of the dormer using joist hangers. The roof rafters of the dormer are 200 x 50mm C16 timbers at 600mm centres that are supported of the 2No 300 x 50mm timbers again using joist hangers.



PROPOSED SECTION THROUGH ROOF