

COVID 19 SAFE WORKING

COVID-19 SAFE WORKING PROTOCOL

For all building work being carried out during the COVID-19 outbreak, until a commercial viable vaccine is available the following must be adhered to at all times.

The Construction Leadership Council has published an updated version 3 of its site operating procedures. This guidance is intended to introduce consistent measures on construction sites of all types and sizes in line with the government's recommendations on social distancing and ensure employers and individuals make every effort to comply.

PLEASE REFER TO CONSTRUCTION SECTOR - SITE OPERATING PROCEDURES: PROTECTING YOUR WORKFORCE DURING CORONAVIRUS (COVID-19)

Social distancing - Workers in the construction industry should follow the guidance on Staying at home and away from others (social distancing). Where they cannot work from home, they must follow the same principles of social distancing while travelling to and from work and while at work.

Self-isolation - Anyone who either has a high temperature or a new persistent cough or is within 14 days of the day when the first member of their household showed symptoms of Coronavirus (Covid-19) should not come to site, but must follow the guidance on self isolation.

Person at increased risk - Anyone who is at increased risk of severe illness from Coronavirus (Covid-19) is strongly advised to work at home and should be particularly stringent about following social distancing measures.

Persons defined on medical grounds as extremely vulnerable - Anyone identified as extremely vulnerable will be advised by their health authority and must follow the guidance on shielding and protecting extremely vulnerable people.

Living with a person in one of the above groups - Anyone living with a person who is at increased risk of severe illness, or an extremely vulnerable person who is shielding from Coronavirus (Covid-19), should stringently follow the guidance on social distancing and minimise contact outside the home.

If someone falls ill - If a worker develops a high temperature or a persistent cough while at work, they should:

- Ensure their Site Manager or Site Supervisor is informed
- Return home immediately
- Avoid touching anything
- Cough or sneeze into a tissue and put it in a bin, or if they do not have tissues, cough and sneeze into the crook of their elbow.

They must then follow the guidance on **self-isolation** and not return to work until their period of self-isolation has been completed.

IF UNSURE PLEASE CONSULT WITH GOVERNMENT ADVICE:
enquiries.br@communities.gov.uk

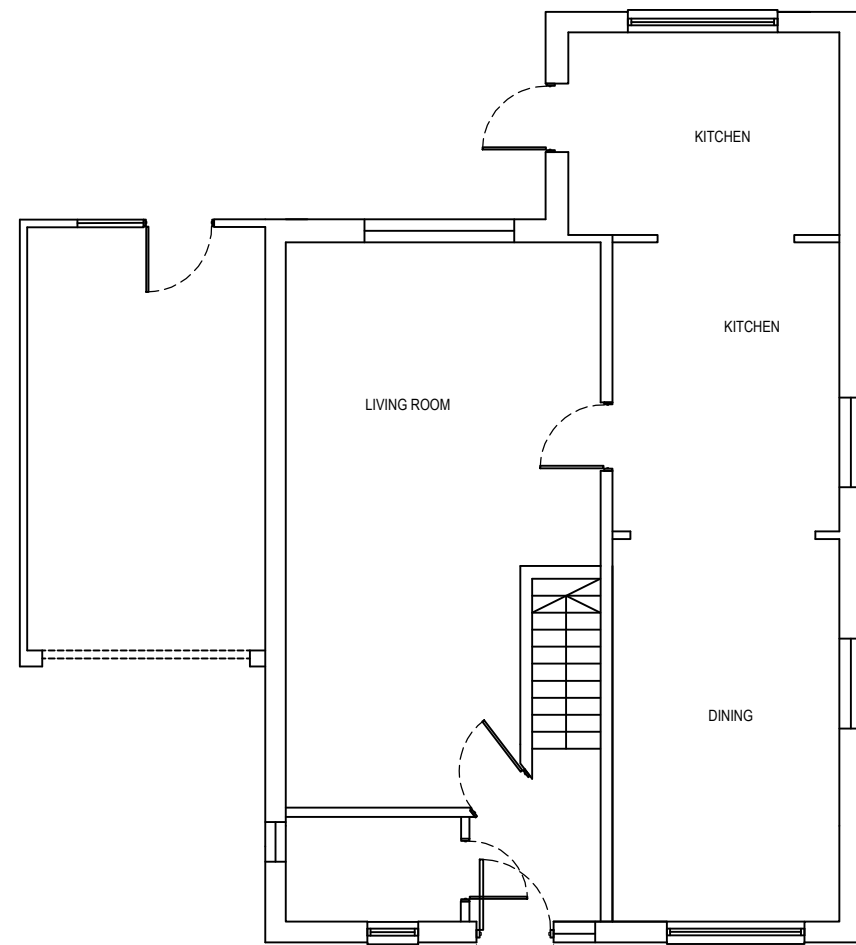
B	Issue for PLANNING	12/01/20	JM	MCA
A	Issue for PLANNING	09/12/20	JM	MCA
REV	DESCRIPTION	DATE	AUTHOR	CHK'D

Jose@mayorgacharteredarchitect.com

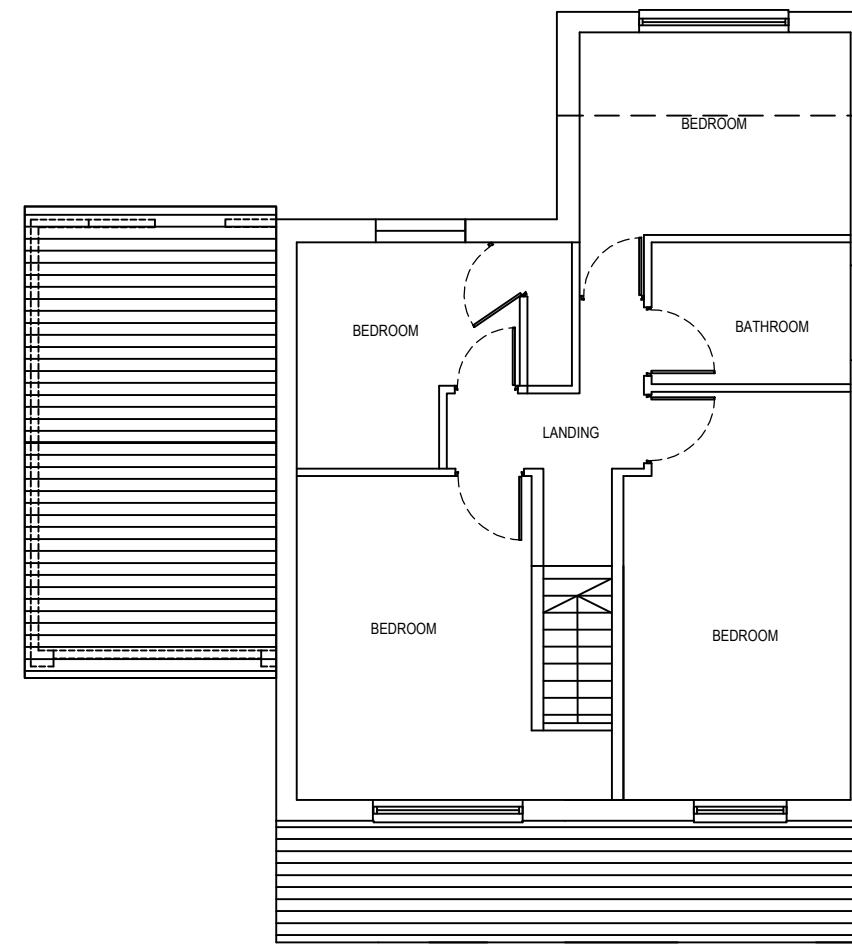
MCA

Mayorga Chartered Architect

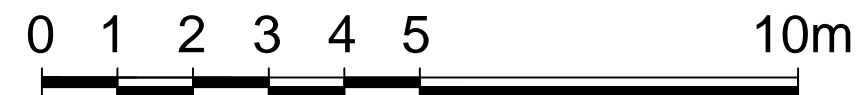
RIBA 



EXISTING GROUND FLOOR



EXISTING FIRST FLOOR



**65 LIME KILN LANE
HOLBURY, SOUTHAMPTON
SO45 2HJ**

**Proposed Two Storey Side
Extension**

EXISTING FLOOR PLANS

Project/Drg No.	Rev	Scale	Date	Drawn By
MCA2020/165/ 103	B	1:100@A3	02/11/20	J Mayorga
				Checked By
				MCA