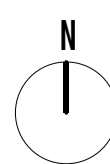
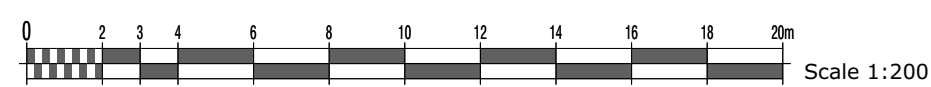


Notes:



Rev.	Description	Date	DB	CB
E	PV array indicated	30.07.20	CK	MW
D	Bin store size and location amended to accommodate 500L food waste bin	11.03.20	PR	MW
C	Garden sheds enlarged to accommodate 4 cycles, 3 cycle stands for visitors added next to the bin store	24.01.20	IS	CK
B	Site Layout updated with client comments	30.10.19	IS	CK
A	Site Layout updated with client comments	15.10.19	IS	CK

**Project** DOYLE AVENUE, PORTSMOUTH  
**Title** Proposed Site Plan (Roof Plan)  
**Dwg No** 19.094.100  
**Status** FOR PLANNING  
**Date** SEPTEMBER 2019  
**Drawn By/Checked By** IS/CK  
**Scale** 1:200@A1  
**Revision** E



Furzehall Farm, Wickham Road  
 Fareham, Hampshire  
 PO16 7JH  
 01329 283 225  
 email@hgp-architects.co.uk  
 www.hgp-architects.co.uk  
 HGP Architects Ltd.  
 Copyright Reserved  
 PMC Construction  
 Railway House, 119 High Street,  
 Cosham PO6 3DR Hampshire  
 +44 (0) 2392 696025  
 enquiries@pmcconstruction.co.uk