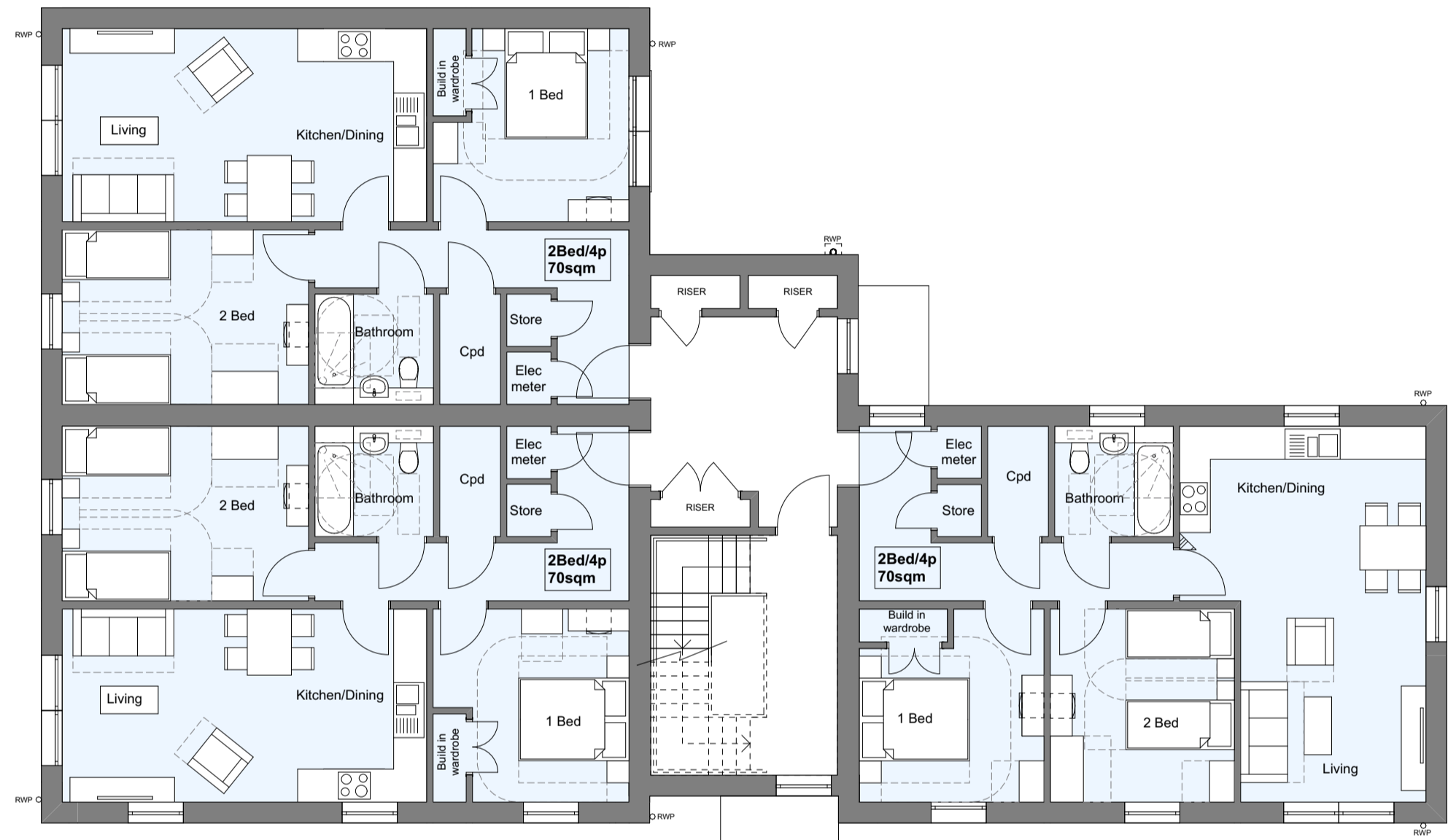
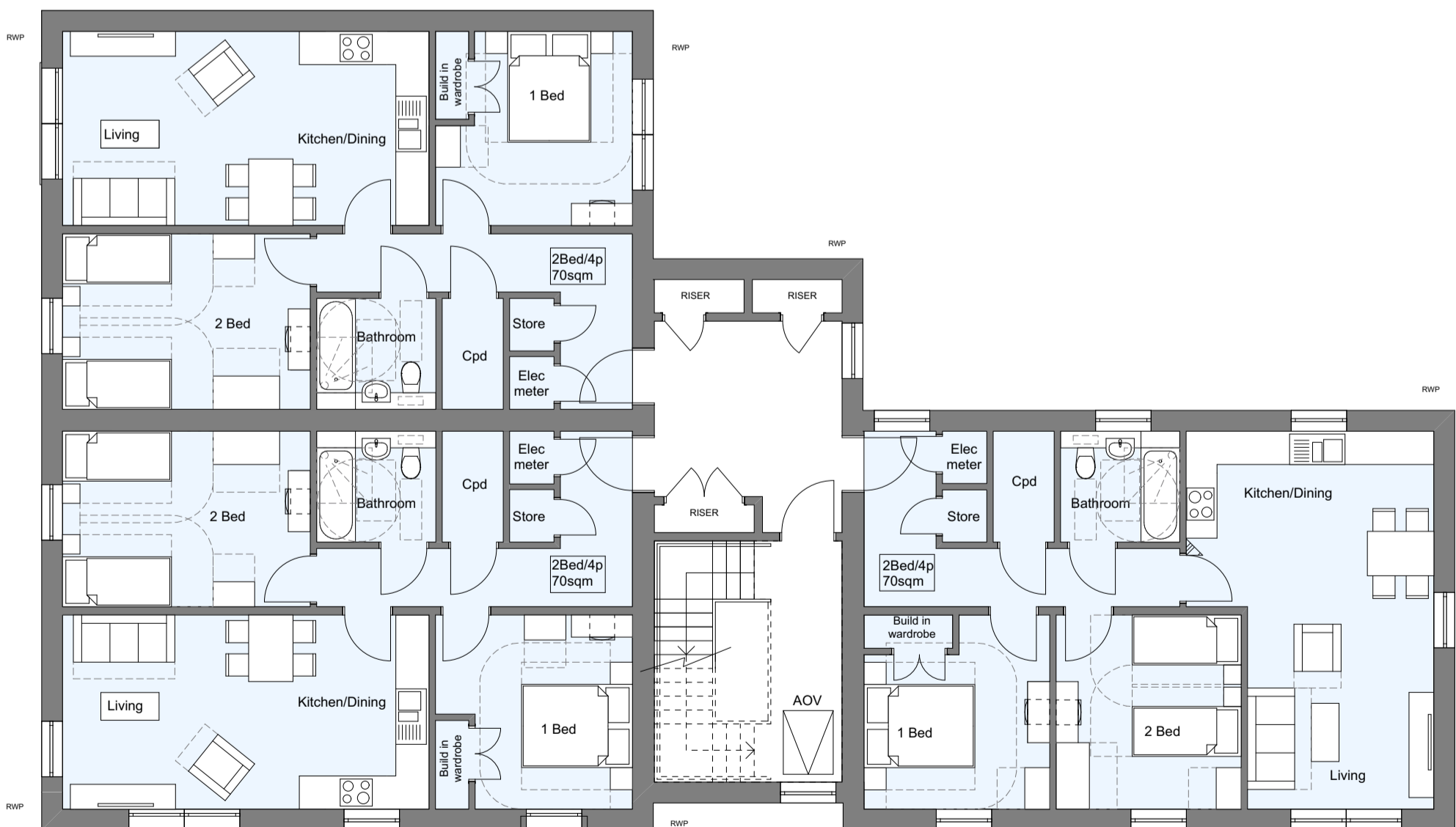


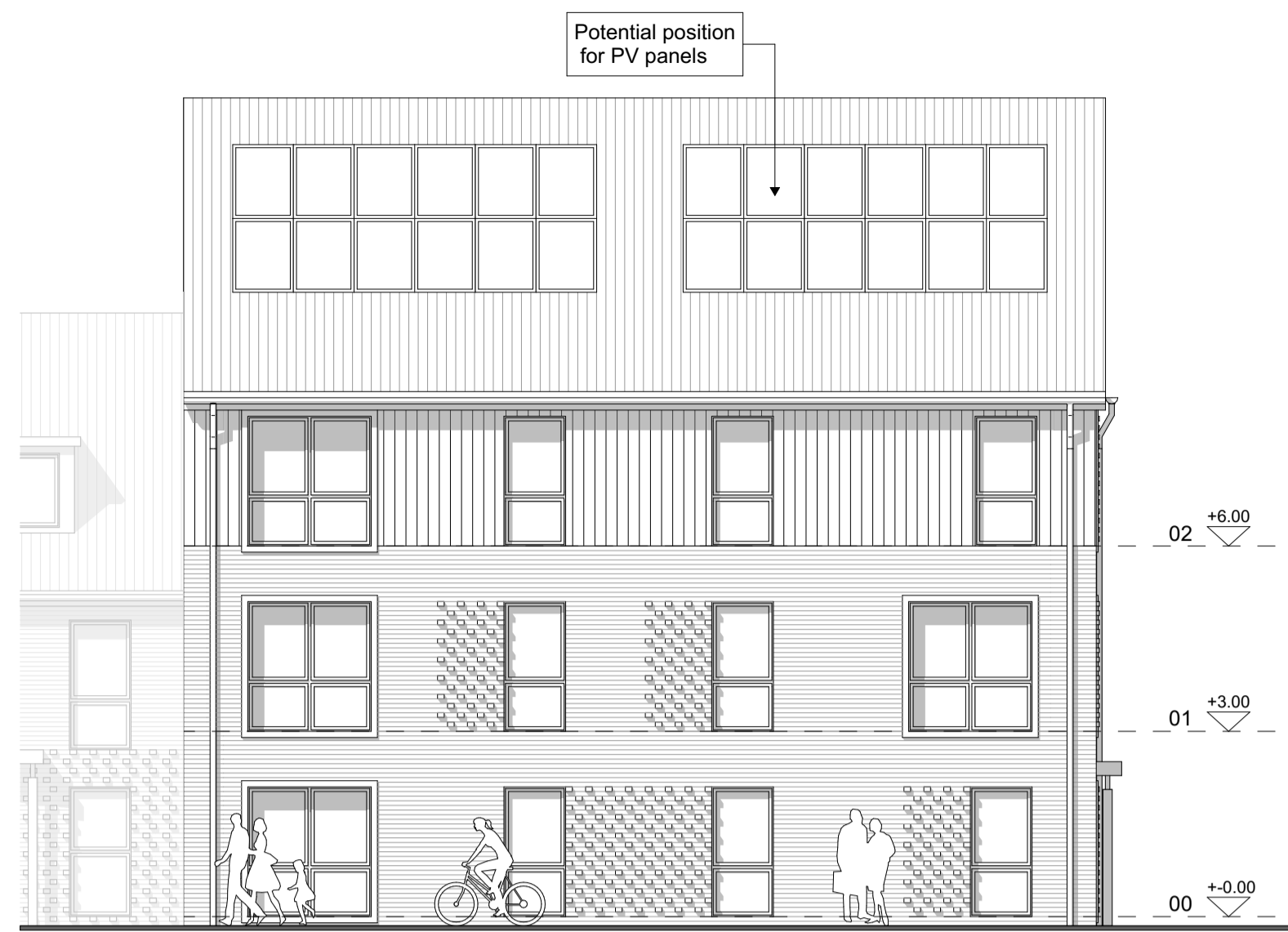
Ground Floor Plan



First Floor Plan



Second Floor Plan



Side Elevation



Side Elevation



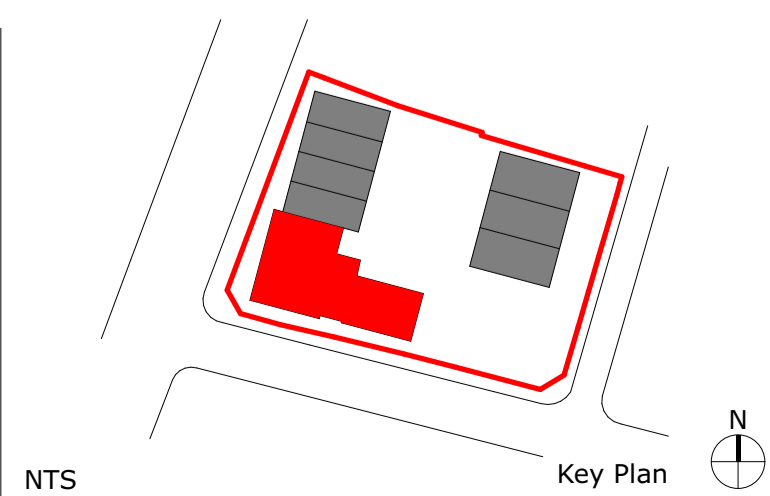
Front Elevation



Rear Elevation

BLOCK OF FLATS

M4(1) & National Space Standard
2bed flat/4 person - area=70 sqm



Notes:



Rev.	Description	Date	DB	CB
D	PV panel array updated side elevation and spandrels omitted from stair well windows	07.01.21	GA	ME
C	PV panel array updated	30.07.20	CK	MW
B	Flat floor plans & elevations updated with client comments	30.10.19	IS	CK
A	Flat floor plans & elevations updated with client comments	15.10.19	IS	CK

Project DOYLE AVENUE, PORTSMOUTH
Title Proposed Flats
Dwg No 19.094.202
Status FOR PLANNING
Date SEPTEMBER 2019
Drawn By/Checked By IS/CK
Scale 1:100@A1
Revision D



Furzehall Farm, Wickham Road
Fareham, Hampshire
PO16 7JH
01329 283 225
email@hgp-architects.co.uk
www.hgp-architects.co.uk



HGP Architects Ltd.
Copyright Reserved



PMC Construction
Railway House, 119 High Street,
Cosham PO6 3DR Hampshire
+44 (0) 2392 696025
enquiries@pmcconstruction.co.uk