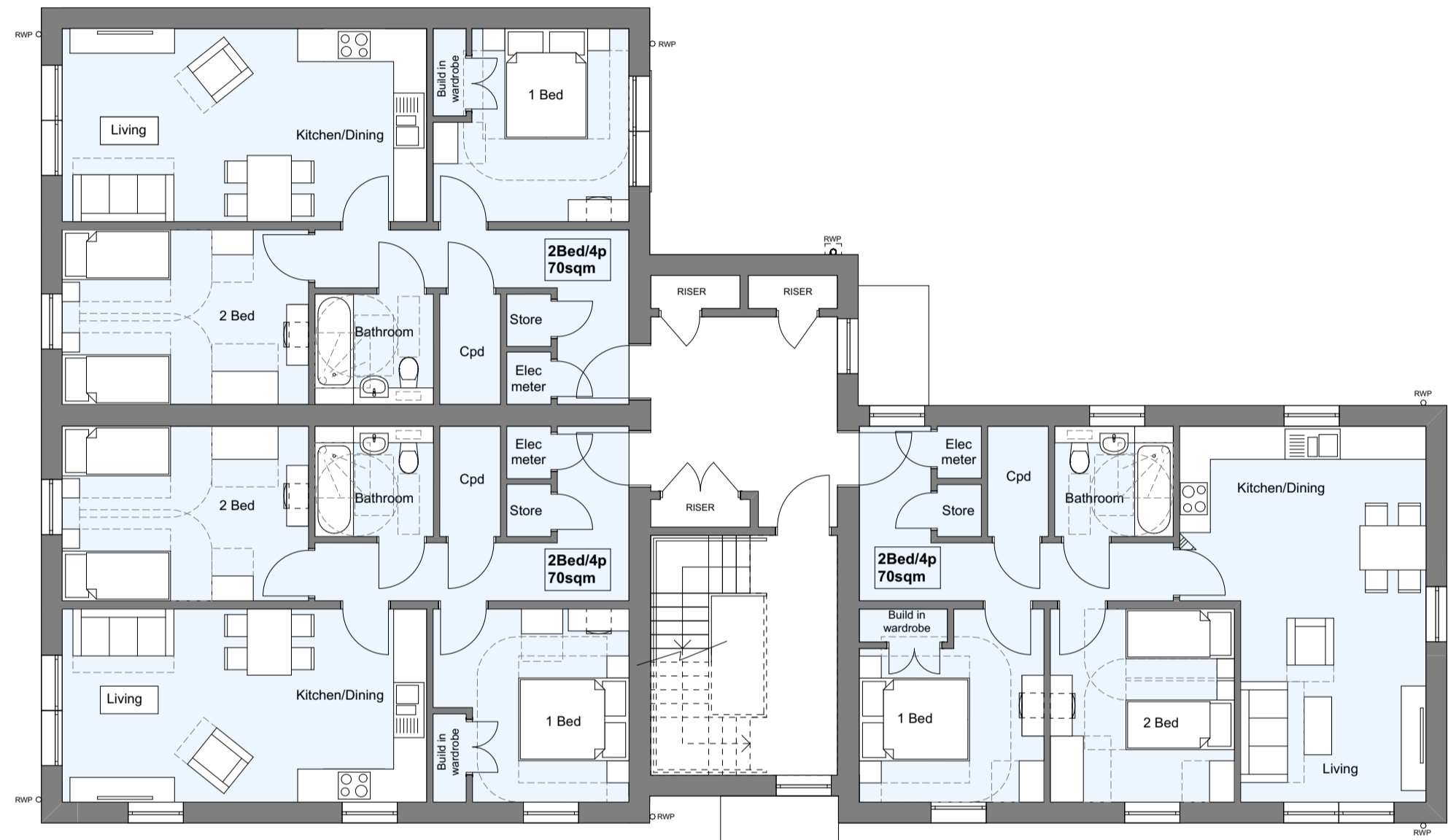
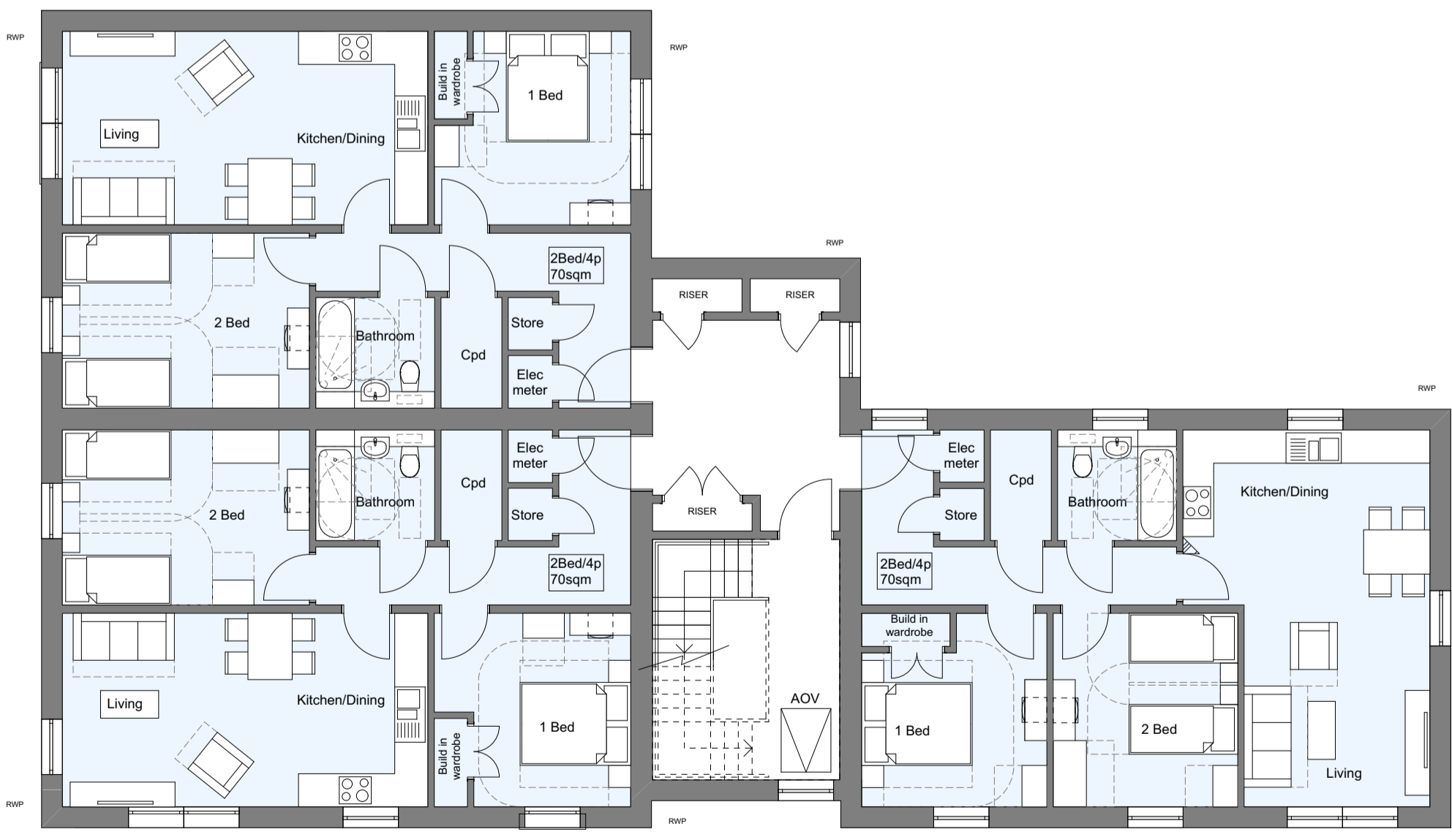


Ground Floor Plan



First Floor Plan



Second Floor Plan



Side Elevation



Side Elevation



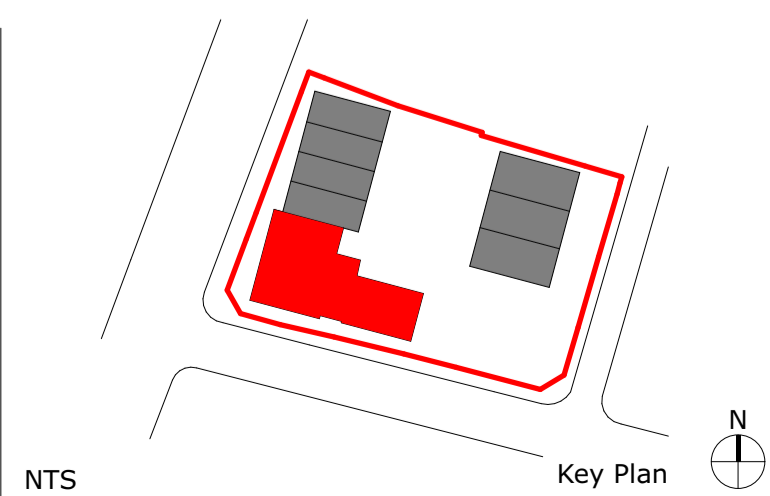
Front Elevation



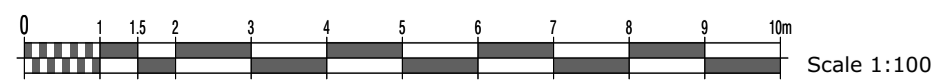
Rear Elevation

BLOCK OF FLATS

M4(1) & National Space Standard
2bed flat/4 person - area=70 sqm



Notes:



Rev.	Description	Date	DB	/	CB
C	PV panel array updated	30.07.20	CK		MW
B	Flat floor plans & elevations updated with client comments	30.10.19	IS		CK
A	Flat floor plans & elevations updated with client comments	15.10.19	IS		CK

Project DOYLE AVENUE, PORTSMOUTH
Title Proposed Flats
Dwg No 19.094.202
Status FOR PLANNING
Date SEPTEMBER 2019
Drawn By/Checked By IS/CK
Scale 1:100@A1
Revision C

HGP ARCHITECTS
 Furzehall Farm, Wickham Road
 Fareham, Hampshire
 PO16 7JH
 01329 283 225
 email@hgp-architects.co.uk
 www.hgp-architects.co.uk
 HGP Architects Ltd.
 Copyright Reserved

pmc
 Construction & Development Services Ltd
 PMC Construction
 Railway House, 119 High Street,
 Cosham PO6 3DR Hampshire
 +44 (0) 2392 696025
 enquiries@pmcconstruction.co.uk