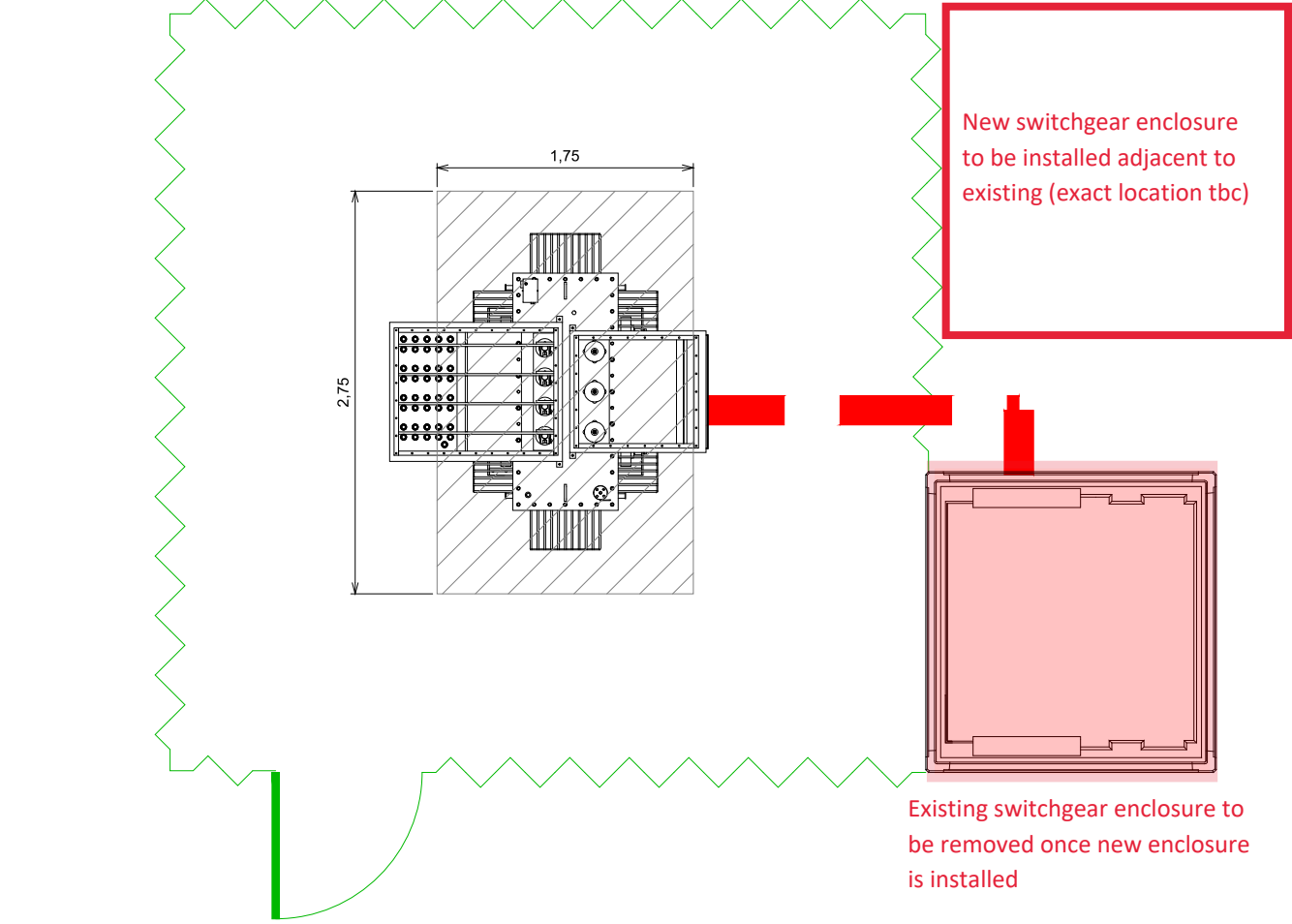
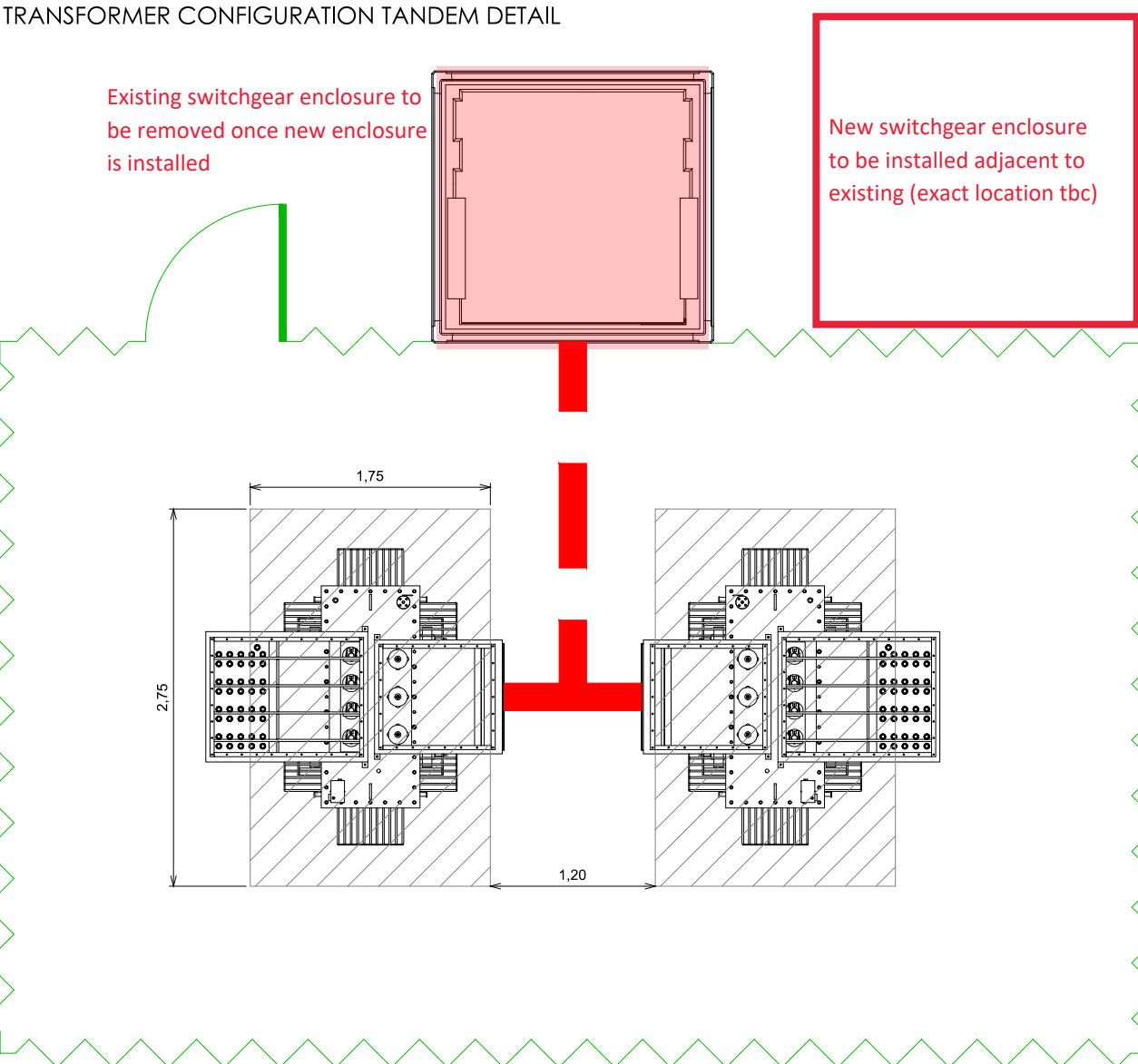


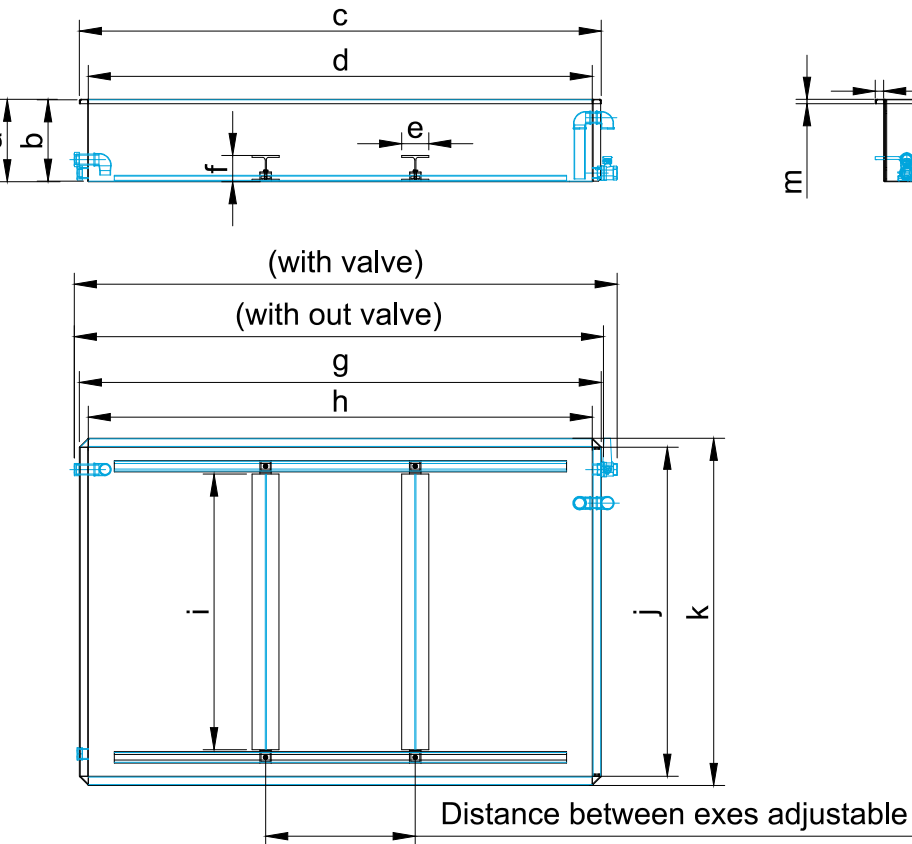
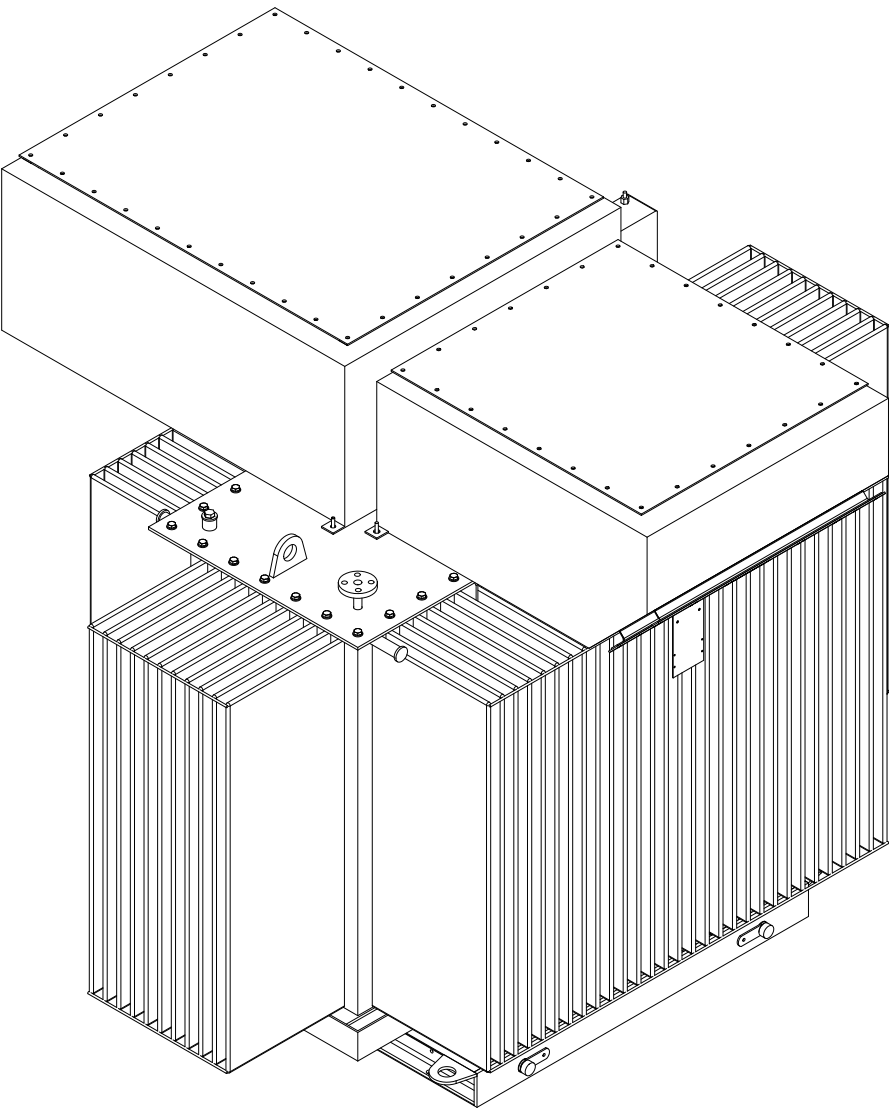
TRANSFORMER CONFIGURATION DETAIL  
SCALE:1/50



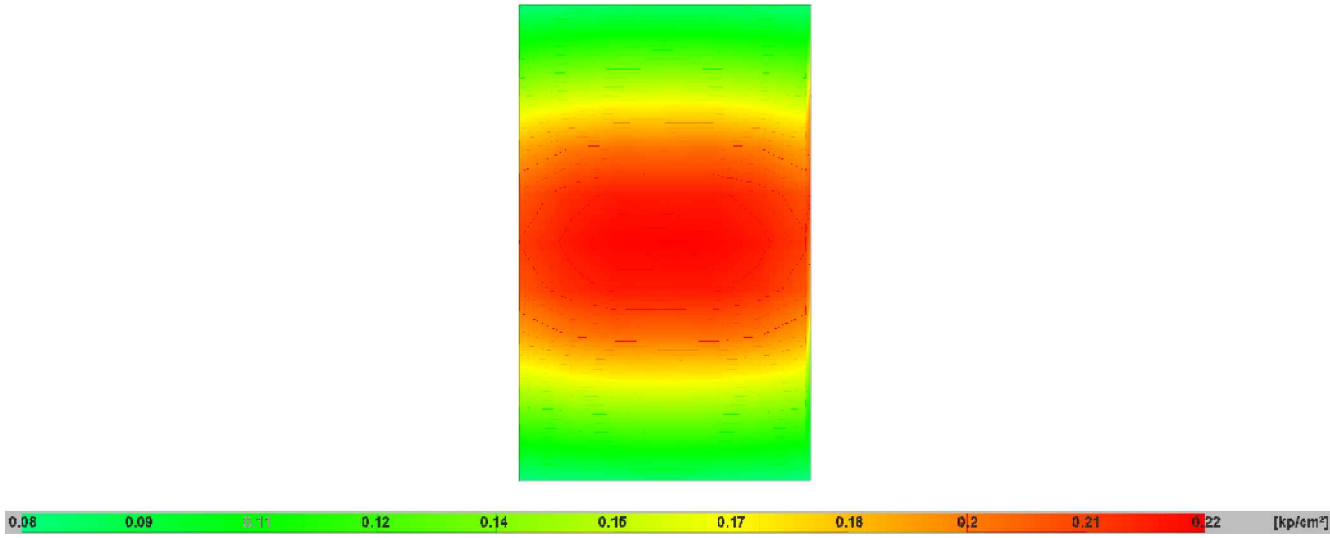
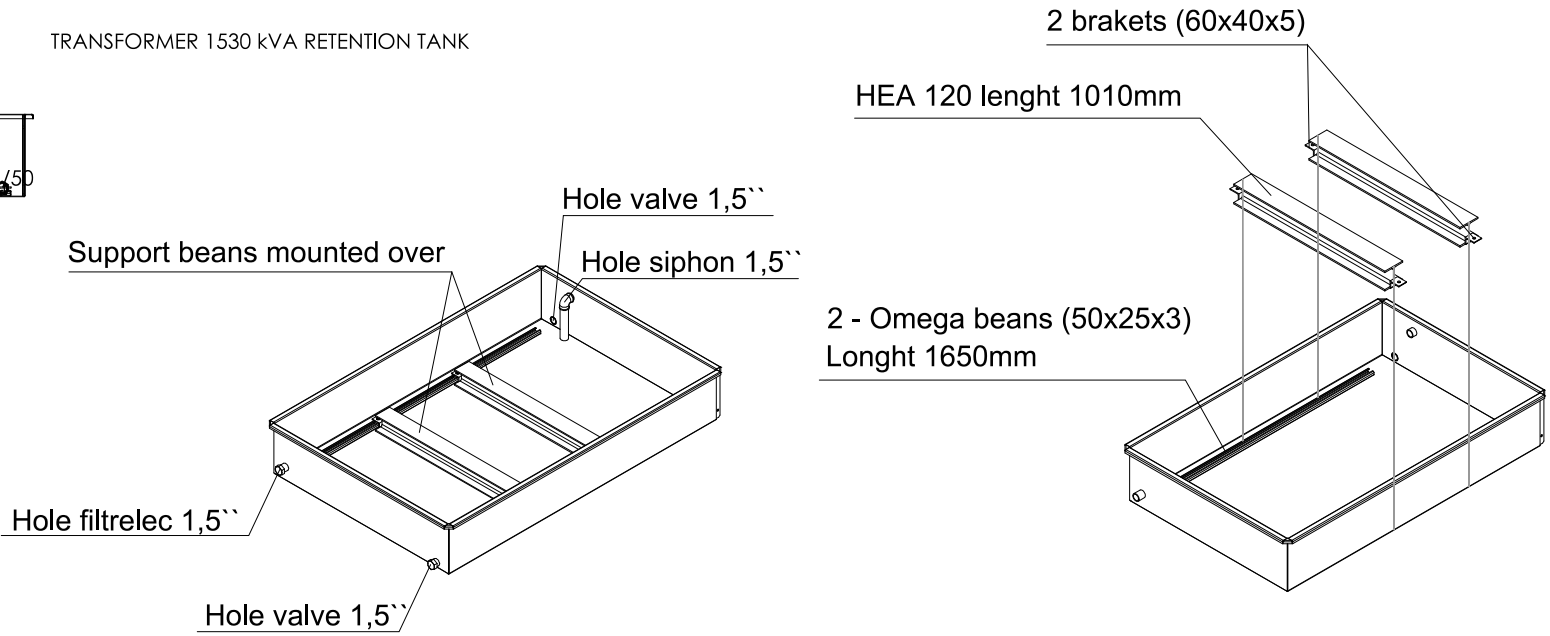
TRANSFORMER CONFIGURATION TANDEM DETAIL



VIEW 3D TRANSFORMER  
NTS

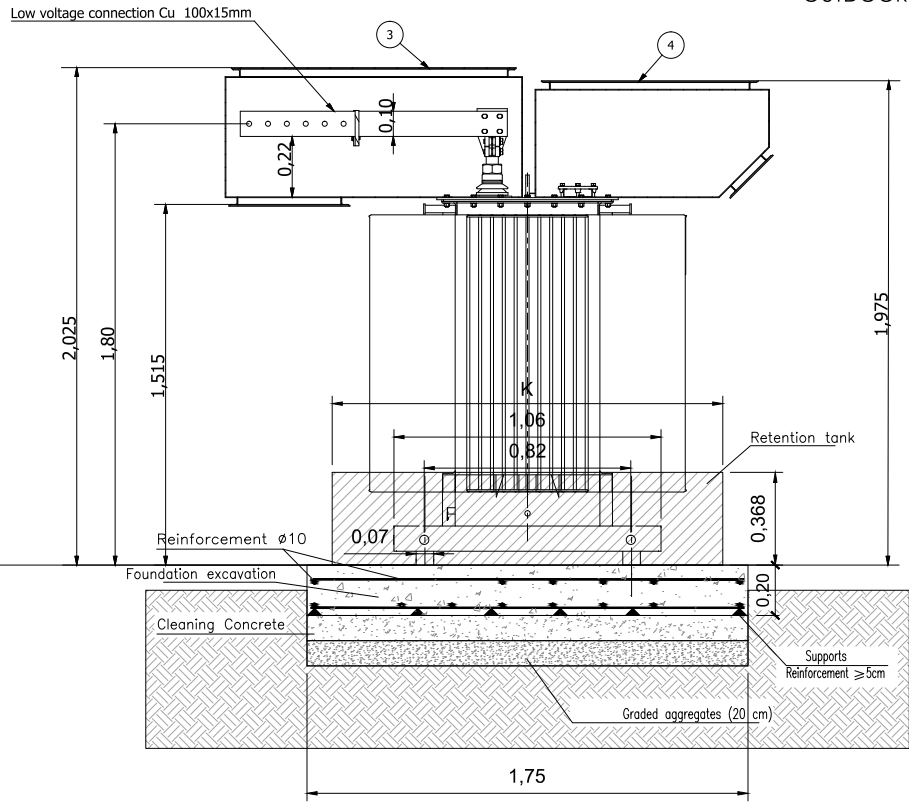


TRANSFORMER 1530 kVA RETENTION TANK



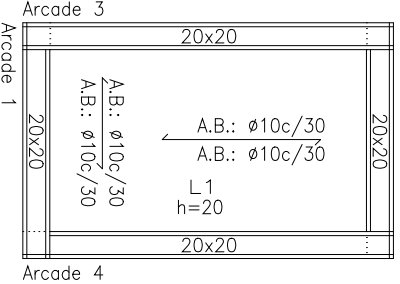
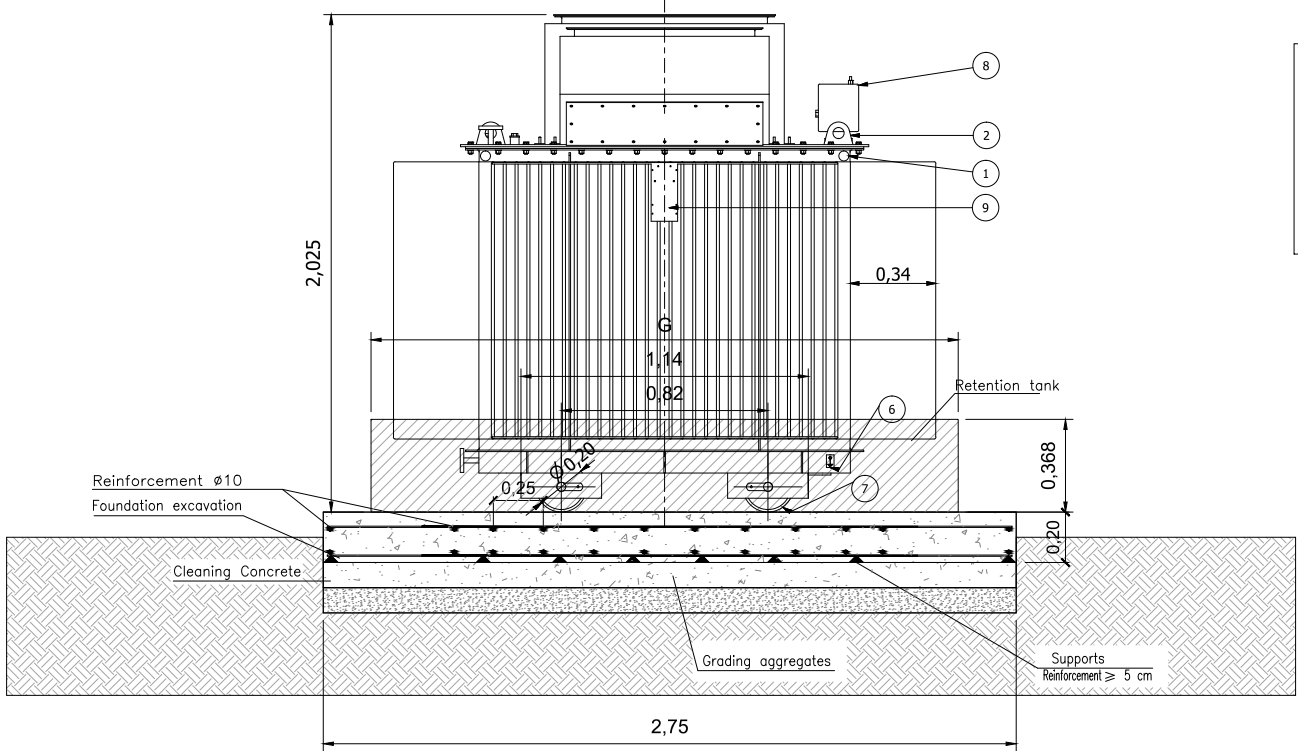
TRANSFORMER'S SIZE	a	b	c	d	e	f	g	h	i	j	k	l	m	With valve	With out valve
1530kWA	368	365	2330	2250	120	117	2330	2250	1230	1470	1550	40	20	2424	2283
1375kWA	368	365	2250	2170	120	117	2250	2170	1130	1370	1450	40	20	2344	2283
1250kWA	368	365	2250	2170	120	117	2250	2170	1130	1370	1450	40	20	2344	2283
1070kWA	368	365	2080	2000	120	117	2080	2000	1010	1250	1330	40	20	-	-
920kWA	368	365	2080	2000	120	117	2080	2000	1010	1250	1330	40	20	-	-
770kWA	368	365	2080	2000	120	117	2080	2000	1010	1250	1330	40	20	-	-
630kWA	368	365	2080	2000	120	117	2080	2000	1010	1250	1330	40	20	-	-

OUTDOOR TRANSFORMER FOUNDATION  
S 1/30



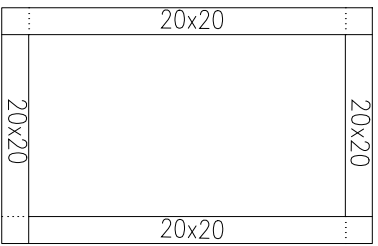
TRANSFORMER FOUNDATION

Foundation  
On-site layout  
Concrete: C25/30  
Steels in foundation  
Base rebar in foundation strip  
Slabs: L1  
Upper: ø10 each 30 cm Lower: ø10 each 30 cm



Elemento	Pos.	Diám.	No.	Long. (cm)	Total S-500 (cm)	(kg)
Arcade 1	1	ø10	2	306	612	3.8
	2	ø10	2	306	612	3.8
	3	ø8	16	84	1344	5.3
Total+10%:						14.2
Arcade 2	4	ø10	2	305	610	3.8
	5	ø10	2	305	610	3.8
	6	ø8	16	84	1344	5.3
Total+10%:						14.2
Arcade 3	7	ø10	2	205	410	2.5
	8	ø10	2	205	410	2.5
	9	ø8	10	84	840	3.3
Total+10%:						9.1
Arcade 4	10	ø10	2	205	410	2.5
	11	ø10	2	205	410	2.5
	12	ø8	10	84	840	3.3
Total+10%:						9.1
ø8:						18.8
ø10:						27.8
Total:						46.6

FOUNDATION  
Concrete: C25/30  
Steels in foundation: S-500



0	04-04-14	AS BUILT	magarica	-	-
REV.	DATE	CHANGES	DRAW	REV.	APPR.
211-217 Lower Richmond Road Richmond, UK, TW94LN Ph: (+44) (0) 208 878 8294					
Project: PV INSTALLATION 9,085MW (11,997.49 kWp)					
Subject: LODGE FARM SOLAR PARK					
Location: Spa Lane, Orston, Nottingham(England) NG13 9PL					
Plain: CIVIL WORKS: TRANSFORMER & SWITCHGEAR SLAB					
Date: APRIL 2014			Replacing:		
Nº Plane: 02.2.2			Replaced by:		
Scale: MULTIPLE			Drawn:		