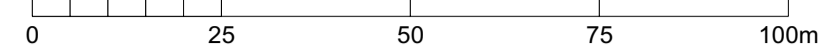


NOTES

This drawing is the property of FPCR Environment and Design Ltd and is issued on the condition it is not reproduced, retained or disclosed to any unauthorised person, either wholly or in part without written consent of FPCR Environment and Design Ltd.

Ordnance Survey base mapping - supplied by client.



KEY

- Site Boundary
  - Retained Vegetation (See Barnes Associates Ltd BS5837 Tree Survey)
  - Trees (All trees to be double staked)
  - Scrub Planting
  - Native Hedgerows (See notes for plants list)
  - Northern Boundary Buffer Hedgerows (To be planted in a single row, 5 plants lin/m)
  - Amenity Planting
  - Amenity Grassland (to be Naturscape NL4 'Hardwearing Lawn Mixture' or similar approved)
  - Flowering Meadow Grassland (to be Naturscape N1 'General Purpose Meadow Mixture' or similar approved)
  - Wetland Grass (to be Naturscape N7 'Wetland Meadow Mixture' or similar approved)
  - Bulb Planting (See notes for planting density)
  - Log Pile (to be created using wood from removed trees on site to provide biodiversity benefits)
- Hardworks**
- Knee Rail (to be 450mm high treated softwood knee rail in diamond section with galvanised strapping. For full detail see Boundary drawing 8881-L-110)
  - Post and Rail Fence (to be treated post and three rail softwood fence constructed to a height of 1200mm. For full detail see Boundary drawing 8881-L-110)
  - Estate Railings (to be steel estate rails with rounded top. For full detail see Boundary drawing 8881-L-110)
  - Public Feature (Informal feature such as seating or natural play)

NOTES:

- All trees to be double staked using timber supports and ties.
- Scrub planting mix to be set out in single species groups of 3,5 or 7 plants and randomised to avoid patterns.
- Mixed Native Hedgerows to be planted double staggered, 5 plants lin/m. *Carpinus betulus* hedging to be planted in a single row, 3 plants lin/m. All whip planting to be staked and protected with a shrub shelter (Tubex or similar approved)
- Northern Boundary Buffer Hedgerow to be planted in a single row, 5 plants lin/m. Planting to create a continuous boundary. Any gaps not labelled on the drawing to be infilled using the native mix.
- Amenity planting mixes to be set out in single species groups of 3,5 or 7 plants and randomised to avoid patterns.
- Bulb planting to be mixed Narcissus bulbs and planted at 10 bulbs per sq/m. Total area = 193 sqm No of Bulbs = approx 1,930.

B	18.11.2020	Updated Layout & Easements	CC / DH
A	06.11.2020	Updates based on comments.	CC / DH
-	06.11.2020	First Issue	CC / DH

rev	date	description	dwn / chkd
-----	------	-------------	------------

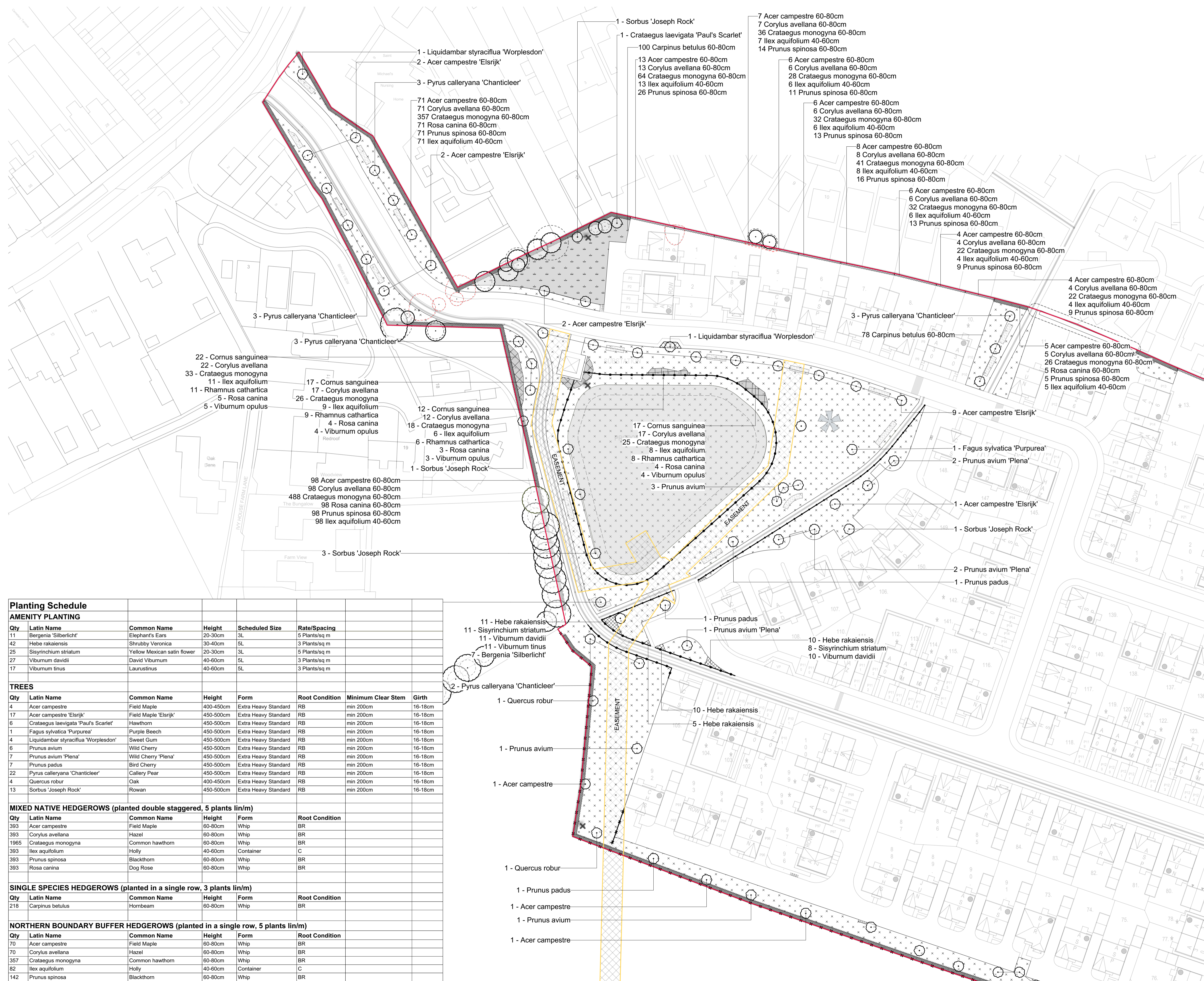
**fpcr**  
 environmental assessment  
 landscape design  
 urban design  
 ecology  
 architecture  
 arboriculture

FPCR Environment and Design Ltd  
 Lockington Hall  
 Lockington  
 Derby DE74 2RH  
 t: 01509 672772  
 f: 01509 674555  
 e: mail@fpcr.co.uk  
 w: www.fpcr.co.uk

client  
**Vistry Group**  
 project  
 Chesterfield Road,  
 Brimington  
 drawing title  
**POS LANDSCAPE PROPOSALS**  
 (Sheet 1 of 2)

scale: 1:500 @ A1  
 drawn / checked: CC / DH  
 revision date: 18 November 2020  
 drawing number: rev

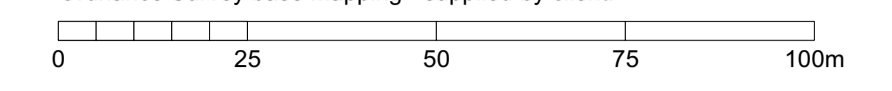
**8881-L-101 B**  
 File: K:\8800\8881\LANDS\Plans\8881-L-04B POS Landscape Proposals.vwx



Qty	Latin Name	Common Name	Height	Scheduled Size	Rate/Spacing		
<b>AMENITY PLANTING</b>							
11	<i>Bergenia 'Silberlicht'</i>	Elephant's Ears	20-30cm	3L	5 Plants/sq m		
42	<i>Hebe rakaiensis</i>	Shrubby Veronica	30-40cm	5L	3 Plants/sq m		
25	<i>Sisyrinchium striatum</i>	Yellow Mexican satin flower	20-30cm	3L	5 Plants/sq m		
27	<i>Viburnum davidii</i>	David Viburnum	40-60cm	5L	3 Plants/sq m		
17	<i>Viburnum tinus</i>	Laurustinus	40-60cm	5L	3 Plants/sq m		
<b>TREES</b>							
Qty	Latin Name	Common Name	Height	Form	Root Condition	Minimum Clear Stem	Girth
4	<i>Acer campestre</i>	Field Maple	400-450cm	Extra Heavy Standard	RB	min 200cm	16-18cm
17	<i>Acer campestre 'Elsrijk'</i>	Field Maple 'Elsrijk'	450-500cm	Extra Heavy Standard	RB	min 200cm	16-18cm
6	<i>Crataegus laevigata 'Paul's Scarlet'</i>	Hawthorn	450-500cm	Extra Heavy Standard	RB	min 200cm	16-18cm
1	<i>Fagus sylvatica 'Purpurea'</i>	Purple Beech	450-500cm	Extra Heavy Standard	RB	min 200cm	16-18cm
4	<i>Liquidambar styraciflua 'Worplesdon'</i>	Sweet Gum	450-500cm	Extra Heavy Standard	RB	min 200cm	16-18cm
6	<i>Prunus avium</i>	Wild Cherry	450-500cm	Extra Heavy Standard	RB	min 200cm	16-18cm
7	<i>Prunus avium 'Plena'</i>	Wild Cherry 'Plena'	450-500cm	Extra Heavy Standard	RB	min 200cm	16-18cm
2	<i>Prunus padus</i>	Bird Cherry	450-500cm	Extra Heavy Standard	RB	min 200cm	16-18cm
27	<i>Pyrus calleryana 'Chanticleer'</i>	Callery Pear	450-500cm	Extra Heavy Standard	RB	min 200cm	16-18cm
4	<i>Quercus robur</i>	Oak	400-450cm	Extra Heavy Standard	RB	min 200cm	16-18cm
13	<i>Sorbus 'Joseph Rock'</i>	Rowan	450-500cm	Extra Heavy Standard	RB	min 200cm	16-18cm
<b>MIXED NATIVE HEDGEROWS (planted double staggered, 5 plants lin/m)</b>							
Qty	Latin Name	Common Name	Height	Form	Root Condition		
393	<i>Acer campestre</i>	Field Maple	60-80cm	Whip	BR		
393	<i>Corylus avellana</i>	Hazel	60-80cm	Whip	BR		
1965	<i>Crataegus monogyna</i>	Common hawthorn	60-80cm	Whip	BR		
393	<i>Ilex aquifolium</i>	Holly	40-60cm	Container	C		
393	<i>Prunus spinosa</i>	Blackthorn	60-80cm	Whip	BR		
393	<i>Rosa canina</i>	Dog Rose	60-80cm	Whip	BR		
<b>SINGLE SPECIES HEDGEROWS (planted in a single row, 3 plants lin/m)</b>							
Qty	Latin Name	Common Name	Height	Form	Root Condition		
218	<i>Carpinus betulus</i>	Hornbeam	60-80cm	Whip	BR		
<b>NORTHERN BOUNDARY BUFFER HEDGEROWS (planted in a single row, 5 plants lin/m)</b>							
Qty	Latin Name	Common Name	Height	Form	Root Condition		
70	<i>Acer campestre</i>	Field Maple	60-80cm	Whip	BR		
70	<i>Corylus avellana</i>	Hazel	60-80cm	Whip	BR		
357	<i>Crataegus monogyna</i>	Common hawthorn	60-80cm	Whip	BR		
82	<i>Ilex aquifolium</i>	Holly	40-60cm	Container	C		
142	<i>Prunus spinosa</i>	Blackthorn	60-80cm	Whip	BR		



**NOTES**  
 This drawing is the property of FPCR Environment and Design Ltd and is issued on the condition it is not reproduced, retained or disclosed to any unauthorised person, either wholly or in part without written consent of FPCR Environment and Design Ltd.



- KEY**
- Site Boundary
  - Retained Vegetation (See Barnes Associates Ltd BS5837 Tree Survey)
  - Trees (All trees to be double staked)
  - Scrub Planting
  - Native Hedgerows (See notes for plants list)
  - Northern Boundary Buffer Hedgerows (To be planted in a single row, 5 plants lin/m)
  - Amenity Planting
  - Amenity Grassland (to be Naturescape NL4 'Hardwearing Lawn Mixture' or similar approved)
  - Flowering Meadow Grassland (to be Naturescape N1 'General Purpose Meadow Mixture' or similar approved)
  - Wetland Grass (to be Naturescape N7 'Wetland Meadow Mixture' or similar approved)
  - Bulb Planting (See notes for planting density)
  - Log Pile (to be created using wood from removed trees on site to provide biodiversity benefits)
- Hardworks**
- Knee Rail (to be 450mm high treated softwood knee rail in diamond section with galvanised strapping. For full detail see Boundary drawing 8881-L-110)
  - Post and Rail Fence (to be treated post and three rail softwood fence constructed to a height of 1200mm. For full detail see Boundary drawing 8881-L-110)
  - Estate Railings (to be steel estate rails with rounded top. For full detail see Boundary drawing 8881-L-110)
  - Public Feature (Informal feature such as seating or natural play)

- NOTES:**
- All trees to be double staked using timber supports and ties.
  - Scrub planting mix to be set out in single species groups of 3.5 or 7 plants and randomised to avoid patterns.
  - Mixed Native Hedgerows to be planted double staggered, 5 plants lin/m. *Carpinus betulus* hedging to be planted in a single row, 3 plants lin/m. All whip planting to be staked and protected with a shrub shelter (Tubex or similar approved)
  - Northern Boundary Buffer Hedgerow to be planted in a single row, 5 plants lin/m. Planting to create a continuous boundary. Any gaps not labelled on the drawing to be infilled using the native mix.
  - Amenity planting mixes to be set out in single species groups of 3.5 or 7 plants and randomised to avoid patterns.
  - Bulb planting to be mixed Narcissus bulbs and planted at 10 bulbs per sq/m. Total area = 193 sqm No of Bulbs = approx 1,930.

B	18.11.2020	Updated Layout & Easements	CC / DH
A	06.11.2020	Updates based on comments	CC / DH
-	06.11.2020	First Issue	CC / DH
rev	date	description	dwn / chkd

**fpcr**

masterplanning  
 environmental assessment  
 landscape design  
 urban design  
 ecology  
 architecture  
 arboriculture

FPCR Environment and Design Ltd  
 Lockington Hall  
 Lockington  
 Derby DE74 2RH

t: 01509 672772  
 f: 01509 674565  
 e: mail@fpcr.co.uk  
 w: www.fpcr.co.uk

client  
**Vistry Group**

project  
**Chesterfield Road, Brimington**

drawing title  
**POS LANDSCAPE PROPOSALS (Sheet 2 of 2)**

scale  
**1:500 @ A1**

drawing number  
**8881-L-102**

drawn / checked  
 CC / DH

revision date  
**18 November 2020**

**B**

File: K:\8800\8881\LANDS\Plans\8881-L-04B POS Landscape Proposals.vwx