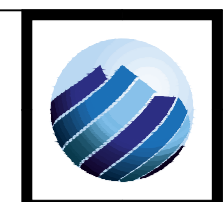


### CDM: Significant Hazards

Health and Safety hazards are identified by the designer as abnormal in pursuance of the current Construction Design and Management regulations. It is assumed that all works will be carried out by competent & adequately resourced contractor(s) working to safe systems of work.



- ### General Notes
- DO NOT SCALE FROM THIS DRAWING. Scaling from this drawing or obtaining dimensions electronically may not provide accurate information and should be avoided. Therefore work only from figured dimensions and contact JRC Consulting Engineers.
  - This drawing is to be read in conjunction with all other relevant Architects, Engineers & Specialist drawings, details, Specification and the relevant Health and Safety Plan (as appropriate to the project). All discrepancies to be reported to the Engineer immediately for verification.

- ### Legend
- Section 185 boundary
  - Existing public combined sewer
  - Existing sewer to be removed
  - Proposed public foul sewer
  - Proposed precast concrete foul manhole
  - Proposed private foul drain
  - Proposed private foul non-access inspection chambers
  - Proposed private storm drain
  - Proposed private precast concrete storm manhole
  - Proposed private storm non-access inspection chambers
  - Proposed private storm rodding eye
  - Proposed private storm linear drainage channel
  - Proposed private storm gully
  - Proposed highway storm gully
  - Proposed public combined sewer
  - Proposed precast concrete combined manhole

REV.	DATE	DETAILS	BY	CHK.
TA1	30.11.20	Issued for TECHNICAL APPROVAL	KKT	TR
P4	30.09.20	Issued FOR CLIENT APPROVAL	HOD	TR
P3	07.08.19	Updated to architects comments	OMG	TR
P2	30.07.19	Issued FOR PLANNING	HOD	TR
P1	24.08.18	Issued for CLIENT APPROVAL	GOB	TR

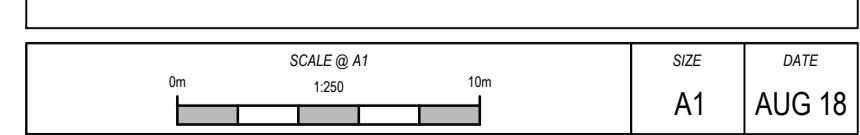


DRAWING STATUS: FOR TECHNICAL APPROVAL

PROJECT: POLYWELL, APPLEDORE



DRAWING TITLE: DRAINAGE LAYOUT



PROJECT NUMBER	DRAWING NUMBER	REVISION
1236	0500	TA1