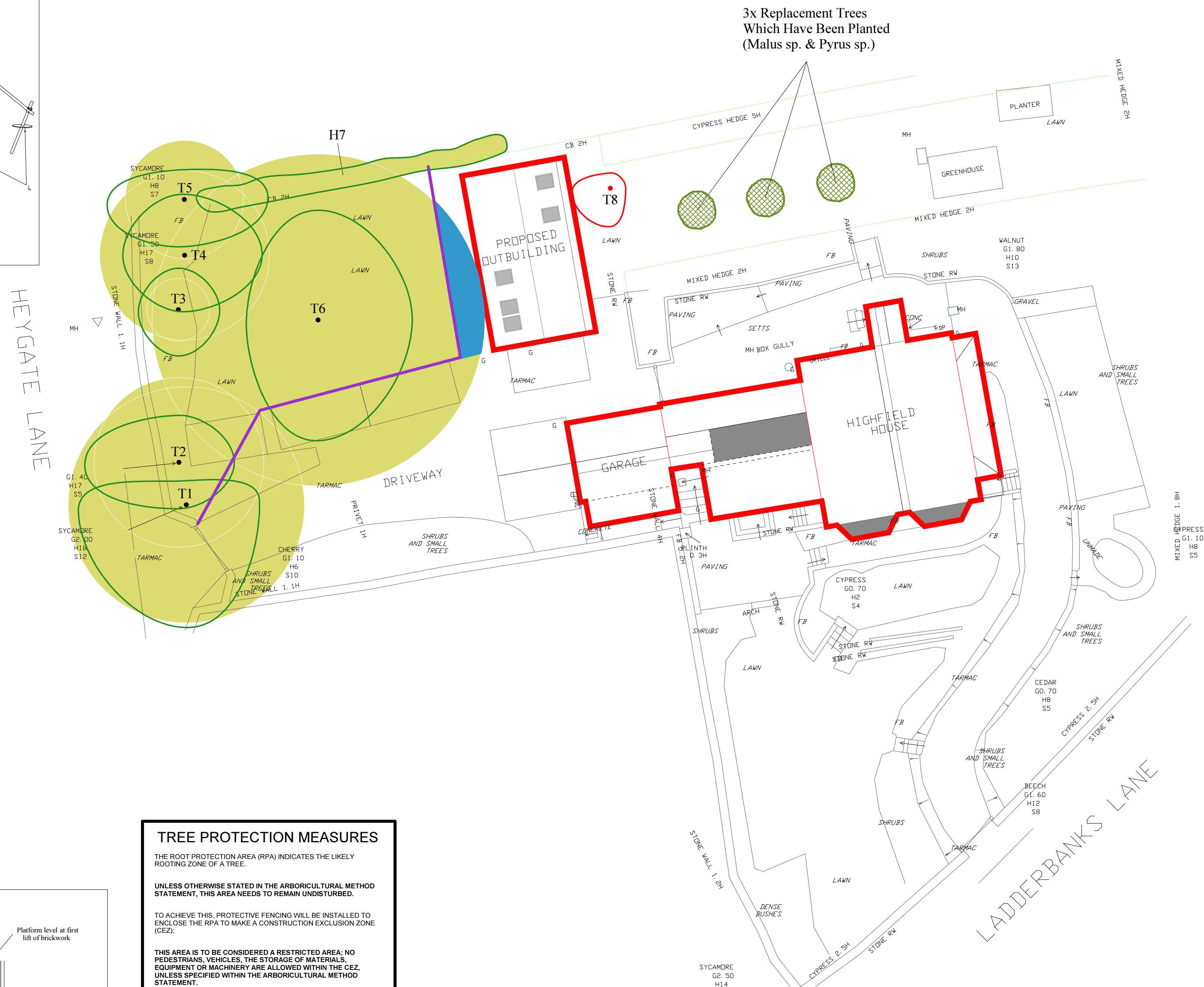
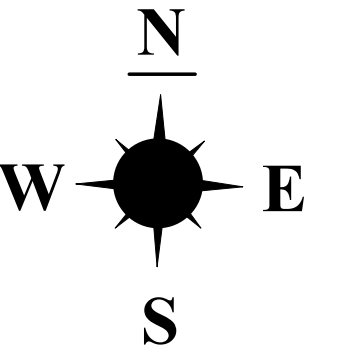


The diagram illustrates a standard scaffold structure. It features a rectangular frame made of standard scaffold poles (1) connected by heavy gauge 2m tall galvanized tube and welded mesh (3). The structure is supported by ground level (4) and includes cross-members (2) and wire ties (5). Dimensions are indicated: a height of 2.7 m, a width of 3 m, and a depth of 0.6 m. A key identifies the components: 1. Standard scaffold poles, 2. Heavy gauge 2m tall galvanized tube and welded mesh infill panels, 3. Panels secured to uprights and cross-members with wire ties, 4. Ground level, 5. Uprights driven into the ground until secure (minimum depth 0.6 m), 6. Standard scaffold clamps.

1. Standard scaffold poles
2. Heavy gauge 2m tall galvanized tube and welded mesh infill panels
3. Panels secured to uprights and cross-members with wire ties
4. Ground level
5. Uprights driven into the ground until secure (minimum depth 0.6 m)
6. Standard scaffold clamps



Appendix 4: Tree Protection Plan

SCALE: 1:200	PAPER SIZE : A2
--------------	-----------------

SURVEYED BY: CC	DRAWN BY: CC	APPROVED BY: DK
-----------------	--------------	-----------------








	TREE TO BE RETAINED
	TREE TO BE REMOVED
	STEM OF TREE TO BE RETAINED
	STEM OF TREE TO BE REMOVED
	ROOT PROTECTION AREA (RPA)
	PROTECTIVE FENCE LINE (CEZ)
	AREA OF RPA WHERE TEMPORARY GROUND PROTECTION WILL BE REQUIRED BENEATH THE SCAFFOLDING (T6 ONLY)



Diagram illustrating the protection of a tree during construction. The diagram shows a tree with its root system. A protective fence is erected around the tree. The ground is protected by a layer of buttressed scaffold boards over a compressible layer (e.g., woodchip) and a geotextile membrane. A platform level is established at the first lift of brickwork. The area of construction activity is indicated.

THE ROOT PROTECTION AREA (RPA) INDICATES THE LIKELY ROOTING ZONE OF A TREE.

UNLESS OTHERWISE STATED IN THE ARBORICULTURAL METHOD STATEMENT, THIS AREA NEEDS TO REMAIN UNDISTURBED.

TO ACHIEVE THIS, PROTECTIVE FENCING WILL BE INSTALLED TO ENCLOSE THE RPA TO MAKE A CONSTRUCTION EXCLUSION ZONE (CEZ);

THIS AREA IS TO BE CONSIDERED A RESTRICTED AREA; NO PEDESTRIANS, VEHICLES, THE STORAGE OF MATERIALS, EQUIPMENT OR MACHINERY ARE ALLOWED WITHIN THE CEZ, UNLESS SPECIFIED WITHIN THE ARBORICULTURAL METHOD STATEMENT.

IT IS IMPORTANT THAT THE PROTECTIVE FENCING IS CHECKED BY THE LPA OR THE ARBORICULTURAL CONSULTANT PRIOR TO ANY CONSTRUCTION WORKS BEING CARRIED OUT. IF THE TREE PROTECTION MEASURES ARE NOT CORRECTLY INSTALLED OR IF THEY DO NOT COMPLY WITH BS 5837: 2012, THIS COULD RESULT IN DAMAGE BEING CAUSED TO TREES AND CONSEQUENTLY A STOP NOTICE MAY BE SERVED BY THE LPA.