

Mark	Comments	Width (SO)	Height (SO)	Finish	Base Build requirement	U Value	Model	Manufacturer	SBD Requirement
CW05	Aluminium full height fixed glazed panels to residential lobby and 1st floor communal residents space	1810.00	5550.0	RAL 7022	NO	1.4	FWS 50+SI	Schueco International KG	PAS 24
CW05	Aluminium full height fixed glazed panels to residential lobby and 1st floor communal residents space	1810.00	5550.0	RAL 7022	NO	1.4	FWS 50+SI	Schueco International KG	PAS 24
CW05	Aluminium full height fixed glazed panels to residential lobby and 1st floor communal residents space	1810.00	5550.0	RAL 7022	NO	1.4	FWS 50+SI	Schueco International KG	PAS 24
CW05	Aluminium full height fixed glazed panels to residential lobby and 1st floor communal residents space	1810.00	5775.00	RAL 7022	YES	1.4	FWS 50+SI	Schueco International KG	PAS 24
Total: 4									

**CW06 DELETED**

Mark	Comments	Width (mm)	Height (mm)	Finish	Base Build requirement	U Value	Model	Manufacturer	SBD Requirement
Total: 0									

Mark	Comments	Width (SO)	Height (SO)	Finish	Base Build requirement	U Value	Model	Manufacturer	SBD Requirement
CW07	Aluminium full height fixed glazed panels to residential lobby and 1st floor communal residents space	1912.50	5775.00	RAL 7022	YES	1.4	FWS 50+SI	Schueco International KG	PAS 24
Total: 1									

Mark	Comments	Width (SO)	Height (SO)	Finish	Base Build requirement	U Value	Model	Manufacturer	SBD Requirement
CW08	Aluminium louvred door and fixed louvred panels to mechanical plant	1472.50	5775.00	RAL 7022	YES	1.4	FWS 50+SI	Schueco International KG	PAS 24 - Steel
Total: 1									

Mark	Comments	Width (SO)	Height (SO)	Finish	Base Build requirement	U Value	Model	Manufacturer	SBD Requirement
CW09	Aluminium full height fixed glazed panels to commercial area	1472.50	5550.0	RAL 7022	NO	1.4	FWS 50+SI	Schueco International KG	PAS 24
Total: 1									

Mark	Comments	Width (SO)	Height (SO)	Finish	Base Build requirement	U Value	Model	Manufacturer	SBD Requirement
CW10	Aluminium fixed louvred panels to cycle store and plant	3947.50	5550.0	RAL 7022	YES	1.4	FWS 50+SI	Schueco International KG	PAS 24 - Steel
Total: 1									

Mark	Comments	Width (SO)	Height (SO)	Finish	Base Build requirement	U Value	Model	Manufacturer	SBD Requirement
CW11	Aluminium louvred door and fixed louvred panels to cycle store	2260.00	5775.00	RAL 7022	YES	1.4	FWS 50+SI	Schueco International KG	PAS 24 - Steel
Total: 1									

Mark	Comments	Width (SO)	Height (SO)	Finish	Base Build requirement	U Value	Model	Manufacturer	SBD Requirement
CW12	Aluminium fixed louvred panels to cycle store	2260.00	5550.0	RAL 7022	YES	1.4	FWS 50+SI	Schueco International KG	PAS 24 - Steel
Total: 1									

Mark	Comments	Width (SO)	Height (SO)	Finish	Base Build requirement	U Value	Model	Manufacturer	SBD Requirement
CW13	Aluminium full height fixed glazed panels to commercial area	2260.00	5550.0	RAL 7022	NO	1.4	FWS 50+SI	Schueco International KG	PAS 24
CW13	Aluminium full height fixed glazed panels to commercial area	2260.00	5550.0	RAL 7022	NO	1.4	FWS 50+SI	Schueco International KG	PAS 24
CW13	Aluminium full height fixed glazed panels to commercial area	2260.00	5550.0	RAL 7022	NO	1.4	FWS 50+SI	Schueco International KG	PAS 24
Total: 3									

Mark	Comments	Width (SO)	Height (SO)	Finish	Base Build requirement	U Value	Model	Manufacturer	SBD Requirement
CW14	Aluminium full height fixed glazed panels to commercial area	2485.00	5550.0	RAL 7022	NO	1.4	FWS 50+SI	Schueco International KG	PAS 24
CW14	Aluminium full height fixed glazed panels to commercial area	2485.00	5550.0	RAL 7022	NO	1.4	FWS 50+SI	Schueco International KG	PAS 24
CW14	Aluminium full height fixed glazed panels to commercial area	2485.00	5550.0	RAL 7022	NO	1.4	FWS 50+SI	Schueco International KG	PAS 24
Total: 3									

Mark	Comments	Width (SO)	Height (SO)	Finish	Base Build requirement	U Value	Model	Manufacturer	SBD Requirement
CW15	Aluminium full height fixed glazed panels to commercial area	2720.00	5550.0	RAL 7022	NO	1.4	FWS 50+SI	Schueco International KG	PAS 24
CW15	Aluminium full height fixed glazed panels to commercial area	2720.00	5550.0	RAL 7022	NO	1.4	FWS 50+SI	Schueco International KG	PAS 24
Total: 2									

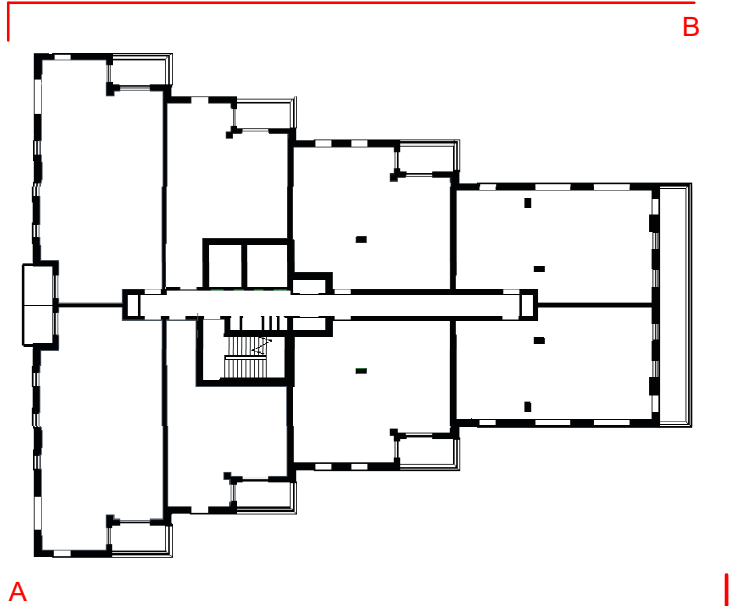
Mark	Comments	Width (SO)	Height (SO)	Finish	Base Build requirement	U Value	Model	Manufacturer	SBD Requirement
CW16	Aluminium glazed entrance door and fixed glazed panel to commercial area	2485.00	5550.0	RAL 7022	NO	1.4	FWS 50+SI	Schueco International KG	PAS 24
Total: 1									

Mark	Comments	Width (SO)	Height (SO)	Finish	Base Build requirement	U Value	Model	Manufacturer	SBD Requirement
CW17	Aluminium full height fixed glazed panels to commercial area	1472.50	5550.0	RAL 7022	NO	1.4	FWS 50+SI	Schueco International KG	PAS 24
Total: 1									

Mark	Comments	Width (SO)	Height (SO)	Finish	Base Build requirement	U Value	Model	Manufacturer	SBD Requirement
CW18	Aluminium glazed entrance door and fixed glazed panel to commercial area	1472.50	5775.00	RAL 7022	NO	1.4	FWS 50+SI	Schueco International KG	PAS 24
Total: 1									

Mark	Comments	Width (SO)	Height (SO)	Finish	Base Build requirement	U Value	Model	Manufacturer	SBD Requirement
CW21	Aluminium full height fixed glazed panels to commercial area	1912.50	5550.0	RAL 7022	NO	1.4	FWS 50+SI	Schueco International KG	PAS 24
Total: 1									

Mark	Comments	Width (SO)	Height (SO)	Finish	Base Build requirement	U Value	Model	Manufacturer	SBD Requirement
CW22	Aluminium glazed entrance door and fixed glazed panel to commercial area	2260.00	5550.0	RAL 7022	NO	1.4	FWS 50+SI	Schueco International KG	PAS 24
Total: 1									



**SECURE BY DESIGN REQUIREMENTS**

- All doors which are considered to be 'vulnerable' doors must be PAS 24 rated. These are defined as doors which are within a 2.5M high zone from the ground floor or any other accessible building levels in the podium levels. Main entry doors and air lock lobbies to be LPS1175 SR2.
- All bin stores and cycle stores will also be PAS 24. If any of these provide a route into the building they must be fob access from both sides. Where Mag locks are used, they should be used in pairs.
- Where Mag Locks are used, it will be in pairs, and should be 1200lbs (500kg) minimum resistance each, situated 1/3 from the top and 1/3 from the bottom of the door.
- All entrances to the building (other than from the car park), will have air lock lobbies thus precluding the need for PAS rated doors throughout the building. These main entrance doors will meet LPS1175 SR2 standards. There will however be PAS 24 door to areas which access amenity spaces, and these shall have fob access in both directions. Air lock lobbies are required to have an audio/visual door entry system to the primary door and an audio system to the secondary.
- Fire exits are to be alarmed, and these should be fitted with the Green Flat Button Escape Panels which will self-reset and have an audible alarm when activated. Green Break glass panels will be fitted with a clear cover
- All 'vulnerable' windows (Those which are within a 2.5M high zone from the ground floor or any other accessible building levels) must be PAS 24:2016 P2A

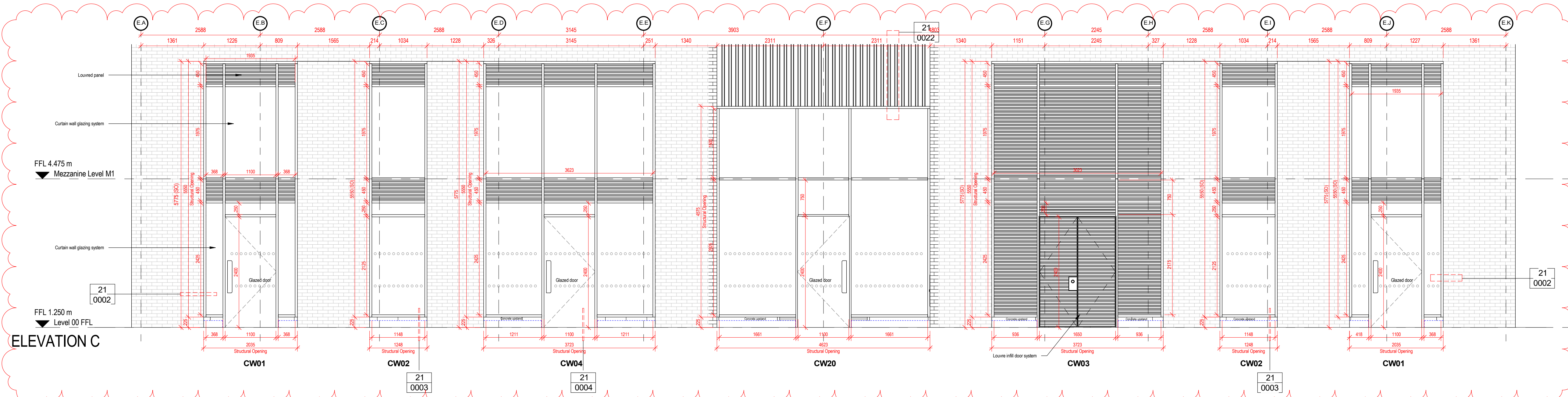
**ACCESS CONTROL**

- Refer to L&P drawings.

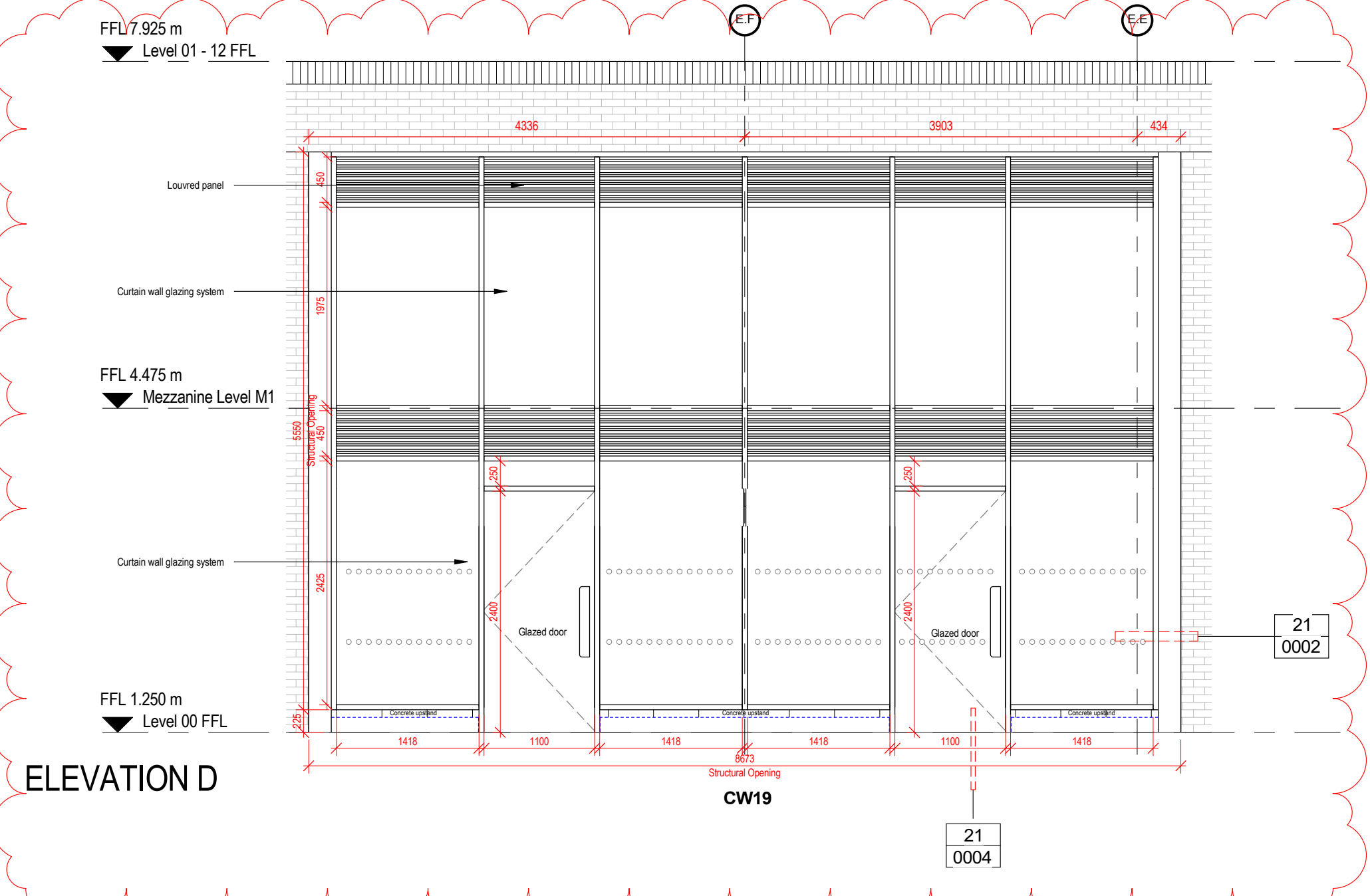
Revisions	
A	26/08/18 ADL Curtain Walls
B	02/11/18 ADL Curtain walls amended. New Mullions added. Door sizes amended
C	05/06/19 ADL Curtain walls - CW spec added / Key plan added / Detail references added / Grids added
C2	15/05/20 CR Curtain Walling Updated. SBD Requirements, manufacturing added, entrance door sizes updated.

Refer to GA's (07-0000 / 07-0017) to see location of curtain walls. Grid lines are referred to curtain wall elevations in this drawing.





ELEVATION C



ELEVATION D

CW01									
Mark	Comments	Width (SO)	Height (SO)	Finish	Base Build requirement	U Value	Model	Manufacturer	SBD Requirement
CW01	Aluminium glazed entrance door and fixed glazed panel to commercial area	2035.00	5775.00	RAL 7022	NO	1.4	FWS 50+ SI	Schueco International KG	PAS 24
CW01	Aluminium glazed entrance door and fixed glazed panel to commercial area	2035.00	5775.00	RAL 7022	NO	1.4	FWS 50+ SI	Schueco International KG	PAS 24
Total: 2									

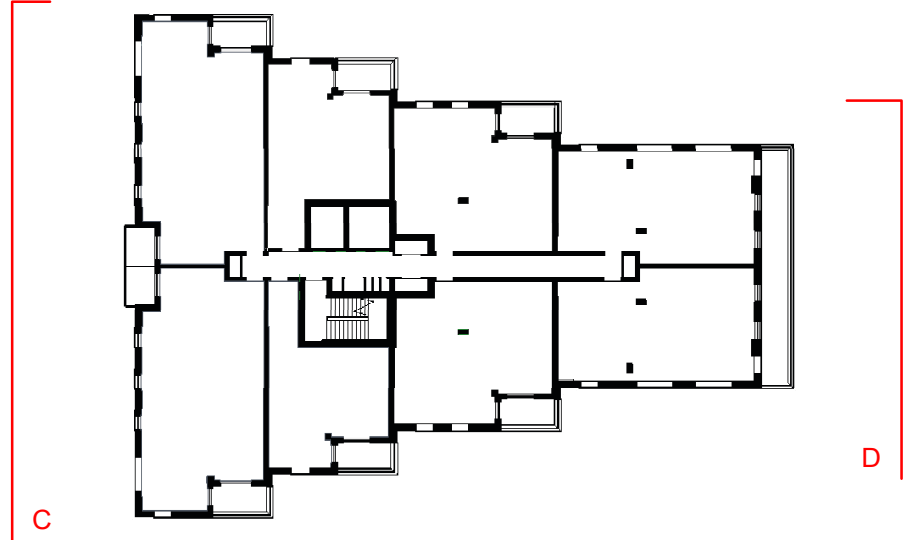
CW02									
Mark	Comments	Width (SO)	Height (SO)	Finish	Base Build requirement	U Value	Model	Manufacturer	SBD Requirement
CW02	Aluminium full height fixed glazed panels to commercial area	5550.00	5775.00	RAL 7022	YES	1.4	FWS 50+ SI	Schueco International KG	PAS 24
CW02	Aluminium full height fixed glazed panels to commercial area	5550.00	5775.00	RAL 7022	NO	1.4	FWS 50+ SI	Schueco International KG	PAS 24
Total: 2									

CW03									
Mark	Comments	Width (SO)	Height (SO)	Finish	Base Build requirement	U Value	Model	Manufacturer	SBD Requirement
CW03	Aluminium louvred door and fixed louvred panels to bin store	3722.50	5775.00	RAL 7022	YES	1.4	FWS 50+ SI	Schueco International KG	PAS 24 - Steel
Total: 1									

CW04									
Mark	Comments	Width (SO)	Height (SO)	Finish	Base Build requirement	U Value	Model	Manufacturer	SBD Requirement
CW04	Aluminium glazed entrance door and fixed glazed panel to commercial area	3722.50	5775.00	RAL 7022	NO	1.4	FWS 50+ SI	Schueco International KG	PAS 24
Total: 1									

CW20									
Mark	Comments	Width (SO)	Height (SO)	Finish	Base Build requirement	U Value	Model	Manufacturer	SBD Requirement
CW20	Aluminium glazed entrance door and fixed glazed panel to lobby	4622.50	4800.00	RAL 7022	YES	1.4	FWS 50+ SI	Schueco International KG	LPS 1175 Issue 7: 2010
Total: 1									

CW19									
Mark	Comments	Width (SO)	Height (SO)	Finish	Base Build requirement	U Value	Model	Manufacturer	SBD Requirement
CW19	Aluminium glazed entrance door and fixed glazed panel to lobby	8222.50	5812.50	RAL 7022	NO	1.4	FWS 50+ SI	Schueco International KG	LPS 1175 Issue 7: 2010
Total: 1									



Revisions	
A	26/09/18 ADL Curtain Walls
B	02/11/18 ADL Curtain walls amended. New mullions added. Door sizes amended
C1	05/06/19 ADL Curtain walls. CW spec added / Key plan added / Detail references added / Grids added
C2	15/05/20 CR Curtain Walling Updated: SBD Requirements, manifestation added, entrance door sizes updated.

Refer to GA's (07-0000 / 07-0017) to see location of curtain walls. Grid lines are referred to curtain wall elevations in this drawing.

**SECURE BY DESIGN REQUIREMENTS**

- All doors which are considered to be 'vulnerable' doors must be PAS 24 rated. These are defined as doors which are within a 2.5M high zone from the ground floor or any other accessible building levels on the podium levels. Main entry doors and air lock lobbies to be LPS1175 SR2.
- All bin stores and cycle stores will also be PAS 24. If any of these provide a route into the building they must be fob access from both sides. Where Mag locks are used, they should be used in pairs.
- Where Mag Locks are used, they will be in pairs, and should be 1200lbs (500kg) minimum resistance each, situated 1/3 from the top and 1/3 from the bottom of the door.
- All entrances to the building (other than from the car park), will have air lock lobbies thus precluding the need for PAS rated doors throughout the building. These main entrance doors will meet LPS1175 SR2 standards. There will however be PAS 24 door to areas which access amenity spaces, and these shall have fob access in both directions. Air lock lobbies are required to have an audio/visual door entry system to the primary door and an audio system to the secondary.
- Fire exits are to be alarmed, and these should be fitted with the Green Flat Button Escape Panels which will self-reset and have an audible alarm when activated. Green Break glass panels will be fitted with a clear cover
- All 'vulnerable' windows (Those which are within a 2.5M high zone from the ground floor or any other accessible building levels) must be PAS 24:2016 P2A

**ACCESS CONTROL**

- Refer to L&P drawings.

project name: **M9011\_Brunel Street**  
drawing reference: Block E - Curtain wall schedule 02  
document reference: 1582-1582-9011-ZE-ZZ-SC-A-31-0101  
status: **CONSTRUCTION**  
cad ref: C:\Revit\Local\M9011\_HUN\_XL\_MSD\_A\_XXXXXX\_00\_CentralFile\_1-xl\_Ax\_PC\_c.rooney.rvt

date: 05/06/19  
sheet: scale: 1:50 @ A1  
rev: C2  
drawn: ADL  
checked: PG