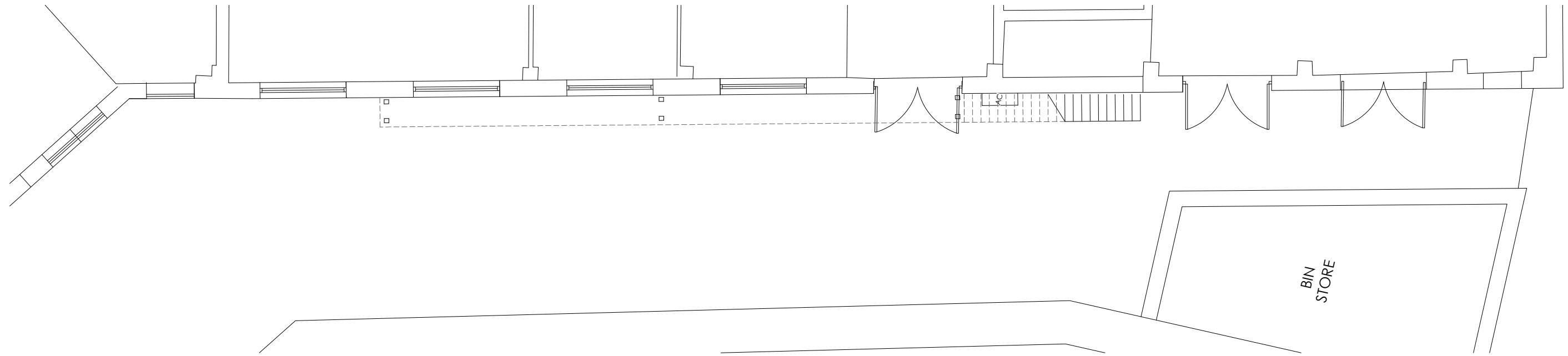


1
00 - 099

Existing Ground Floor Plan

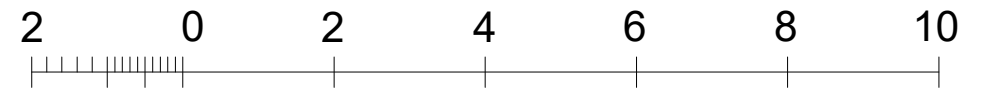
Scale: 1:100



2
00 - 099

Existing Basement Floor Plan

Scale: 1:100



Metres



Aros Architects
Jerwood Space
171 Union Street
London SE1 0LN

Telephone
+44(0)20 7928 2444
Facsimile
+44(0)20 7928 2450

Email
info@arosarchitects.com
Website
www.arosarchitects.com

NOTES

1. All dimensions are to be verified by the Contractor on site, any discrepancies in this drawing are to be reported to Aros Ltd
2. The Contractor shall not vary any work shown on this drawing without prior approval in writing from Aros Ltd.
3. The Contractor shall supply a full set of shop drawings and specifications prior to commencement of work.
4. This drawing supersedes all previous issues of the same drawing number with an earlier revision suffix.
5. The Contractor shall immediately inform Aros Ltd of the effect upon the programme and costs of any alterations to the proposed works shown on this drawing.
6. This drawing is the copyright of Aros Ltd and the contents must not be disclosed to other parties without prior agreement.

REVISIONS

REV	DATE	DRAWN	CHECKED	DESCRIPTION
P1	08.10.2020	JA	ML	PLANNING ISSUE
P2	14.01.2021	SC	ML	PLANNING ISSUE

PROJECT NUMBER

6252

PROJECT NAME

COUNTY HALL APARTMENTS, SE1 7PY

TITLE

EXISTING BASEMENT & GROUND FLOOR PLANS

DRAWING NUMBER

(00) 099

DATE

14.01.21

STATUS

PLANNING

SCALE

1:100@A3

REV

P2