



NOTES

- All errors, omission and discrepancies to be reported to the Engineer and Peter Evans Partnership Ltd immediately.
- Topographic survey provided by Lewis Brown Chartered Land Surveyors, drawing ref. A19218_UGX dated 08/2019
- The topographic survey has been drawn about an Ordnance Survey grid.
- All levels are in metres and relate to an Ordnance Survey datum derived from GPS.
- All setting out details and proposed levels based on topographic survey co-ordinate system.
- Contractor to verify location of existing services prior to commencement of any works.
- Contractor to confirm location of services to isolate / divert / reconnect.
- All electrical equipment removed by the contractor is to be disconnected and made safe by qualified personnel prior to removal and/or commencement of any works
- All highway construction details to be in accordance with South Gloucestershire Council's "Adoptable Highway Specification" and Department for Transport "Manual of Contract Documents for Highway Works" (MCHW)
- All covers within the highway (including private chambers) shall be in accordance with BS EN 124, stamped to indicate accreditation by BSI, LRQA or SGSY and all those within the carriageway shall be grade D400
- All necessary steps shall be taken to provide temporary drainages outlets to prevent ponding or surface water on lower carriageway layers until the completion of the pavement and its permanent drainage.
- All road marking to be thermoplastic paint.
- All road markings and signs to be in accordance with The Traffic Signs Regulations and General Directions 2016.
- Contractor to verify spelling/consistency on all signs and road markings prior to painting/procurement. All errors/discrepancies to be reported to Peter Evans Partnership Ltd. immediately.
- Layout of tactile paving to be in accordance with "Guidance on the Use of Tactile Paving" by the Department for Transport
- Design details subject to approval by South Gloucestershire Council. Details may change.
- All street lighting to be in accordance with South Gloucestershire Council's "Adoptable Highway Specification".
- For Overall Scheme Plan see drawing no. 3315.01
- For Site Clearance Plan See drawing no. 3315.02
- For Proposed General Arrangement see drawing no. 3315.03
- For Proposed Levels and Setting Out Details see drawing no. 3315.04
- For Proposed Surfacing Plan see drawing no. 3315.05
- For Location of Existing Services see drawing no. 3315.06
- For Typical Construction Details see drawing no. 3315.07

B 21.01.21 MEC Do not scale removed.
 A 15.01.21 LS Updated internal site layout. Kerbing revised.



Peter Evans Partnership
 Transport Planning & Highway Consultants

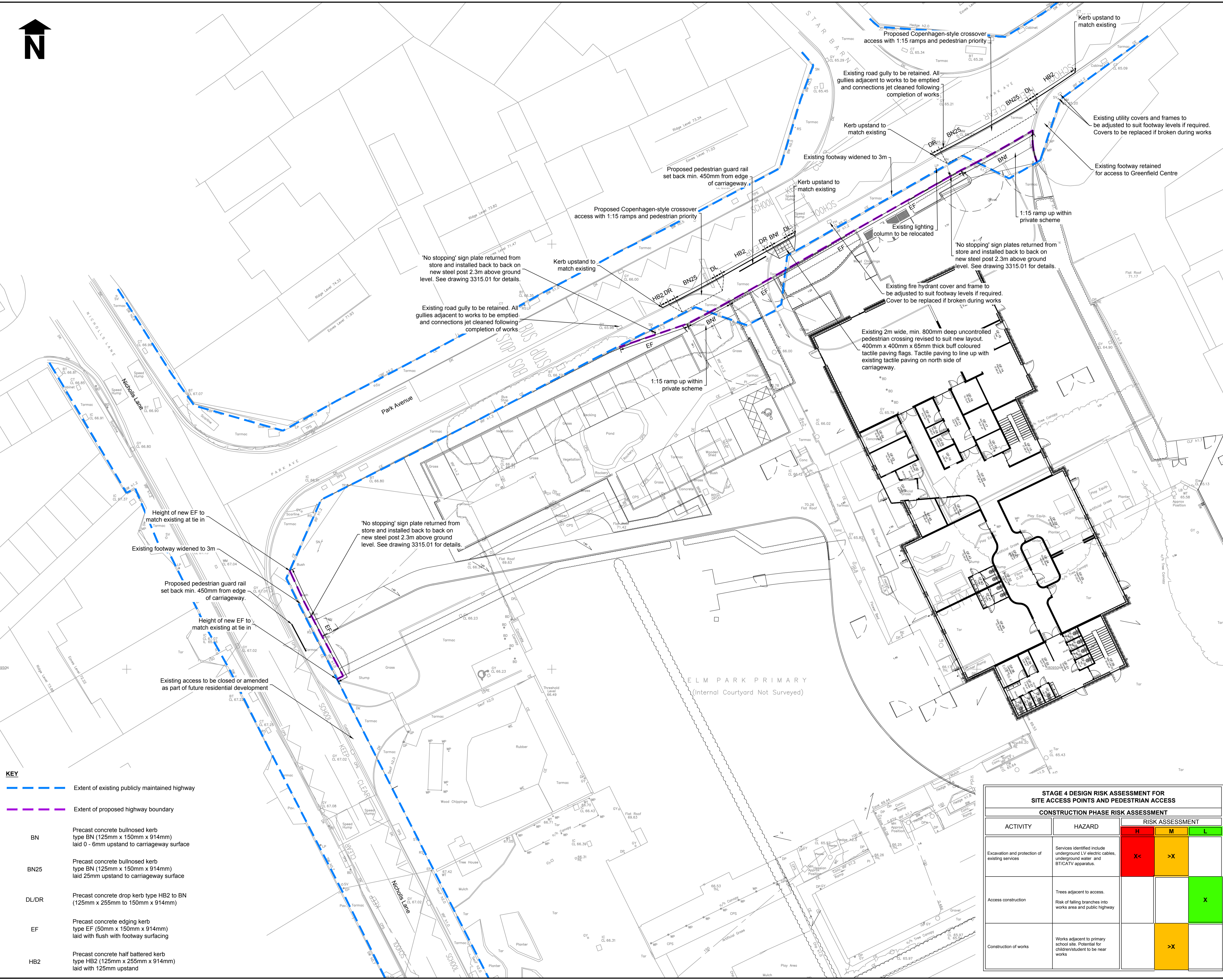
Client
 SOUTH GLOUCESTERSHIRE COUNCIL

Job
 ELM PARK PRIMARY SCHOOL

Drawing Title
 PROPOSED GENERAL ARRANGEMENT

Scale @ A1 1:200 Date 13.11.20 Drawn by AA Checked by MEC

Drawing Number 3315.03B Issue Status FOR TECHNICAL APPROVAL



KEY

- Extent of existing publicly maintained highway
- Extent of proposed highway boundary

BN	Precast concrete bullnosed kerb type BN (125mm x 150mm x 914mm) laid 0 - 6mm upstand to carriageway surface
BN25	Precast concrete bullnosed kerb type BN (125mm x 150mm x 914mm) laid 25mm upstand to carriageway surface
DL/DR	Precast concrete drop kerb type HB2 to BN (125mm x 255mm to 150mm x 914mm)
EF	Precast concrete edging kerb type EF (50mm x 150mm x 914mm) laid with flush with footway surfacing
HB2	Precast concrete half battered kerb type HB2 (125mm x 255mm x 914mm) laid with 125mm upstand

STAGE 4 DESIGN RISK ASSESSMENT FOR SITE ACCESS POINTS AND PEDESTRIAN ACCESS

ACTIVITY	HAZARD	RISK ASSESSMENT		
		H	M	L
Excavation and protection of existing services	Services identified include underground LV electric cables, underground water and ST/CAV apparatus.	X<	>X	
Access construction	Trees adjacent to access. Risk of falling branches into works area and public highway			X
Construction of works	Works adjacent to primary school site. Potential for children/student to be near works		>X	

NOTE: REPRODUCED FROM THE ORDNANCE SURVEY MAP WITH THE PERMISSION OF THE CONTROLLER OF HMSO. © CROWN COPYRIGHT LICENSE NO. 100008987