

PAGE 2 OF 2, REF C88601/TONGUE - 21 BLACKBIRD PLACE, RAINWORTH, MANSFIELD, NOTTINGHAMSHIRE, N921 0WR  
SCALE DRAWINGS 1:100 - PARKING PROVISIONS REMAIN UNAFFECTED

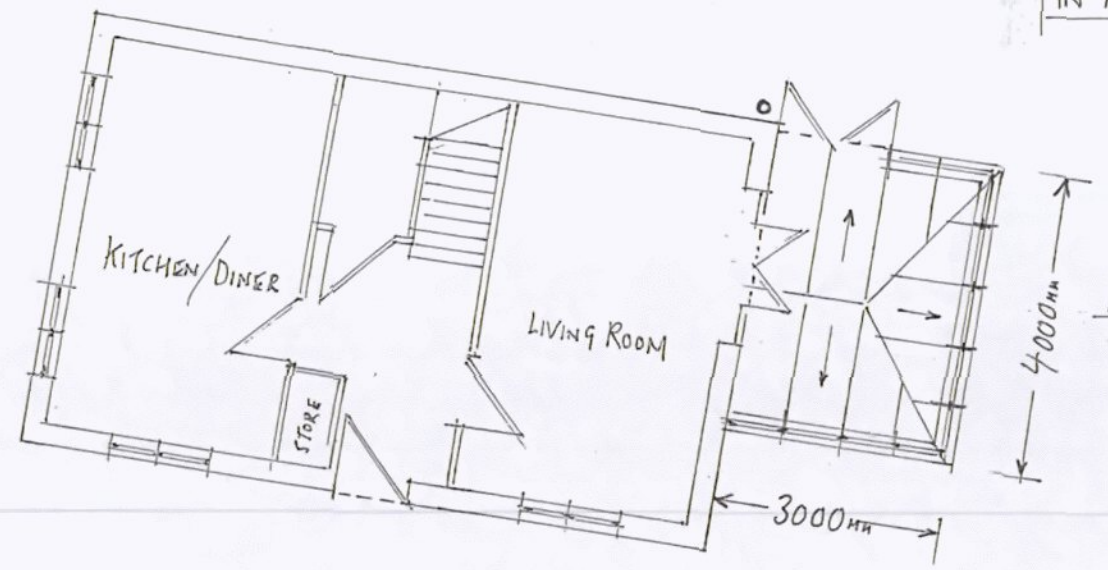
PROPOSED CHANGES...



NORTH FACING REAR ELEVATION

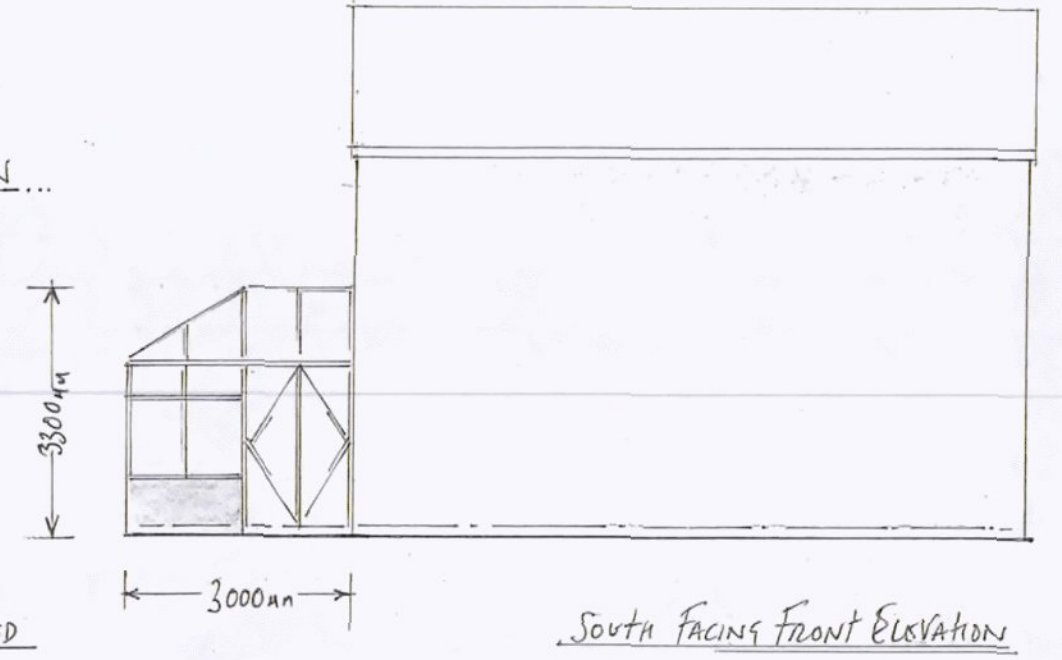
GENERAL NOTES

- BRICKS TO BE USED MATCH HOUSE - 1Bstock WELBECK RED MIXTURE 65MM
- RED ENGINEERING BRICKS TO BE USED BELOW DPC IN ACCORDANCE WITH BEST BUILDING PRACTICE



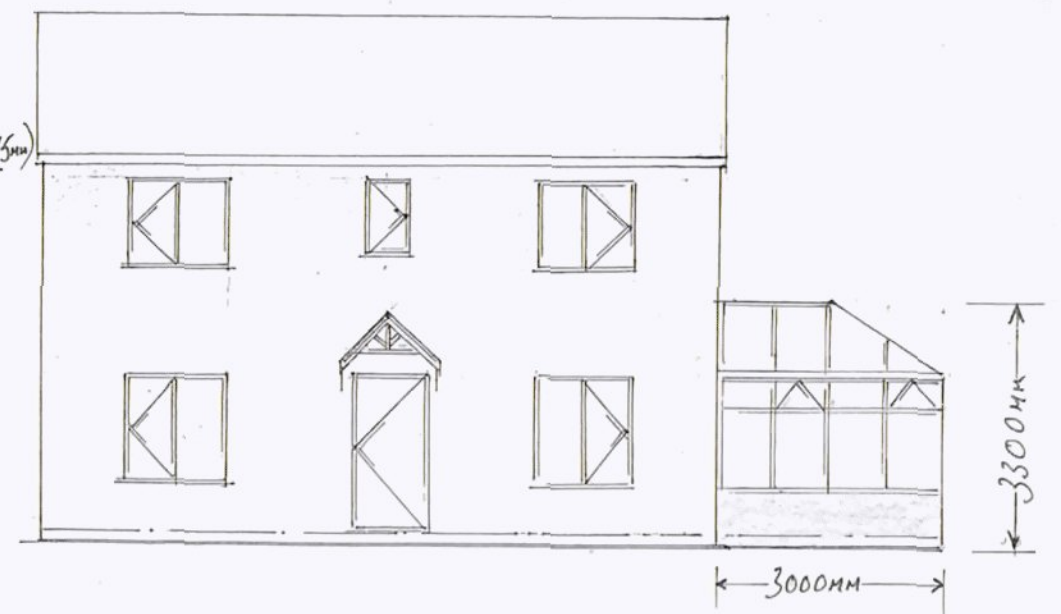
SOUTH FACING FRONT ELEVATION

EAST FACING SIDE ELEVATION...



GENERAL NOTES CONT...

- WALLS TO BE 275MM THICK (75MM CAVITY) FULLY INSULATED
- FLOOR LEVEL TO HOUSE D.P.C
- FLOORING TO TROWELL FINISH, 100MM THICK WITH A 1200g MEMBRANE OVER SAND BLINDED, CONSOLIDATED HARDCORE BASE (MIN 75MM)
- DRAINAGE INTO EXISTING HOUSE RAIN WATER PIPE
- CONSERVATORY TO BE PRODUCED IN WHITE PVC-U WITH A CLEAR A' RATED GLASS ROOF



RECEIVED BY  
21 JAN 2021  
ADMIN SERVICES

DRAWINGS BY S. UPRICARD