



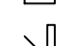


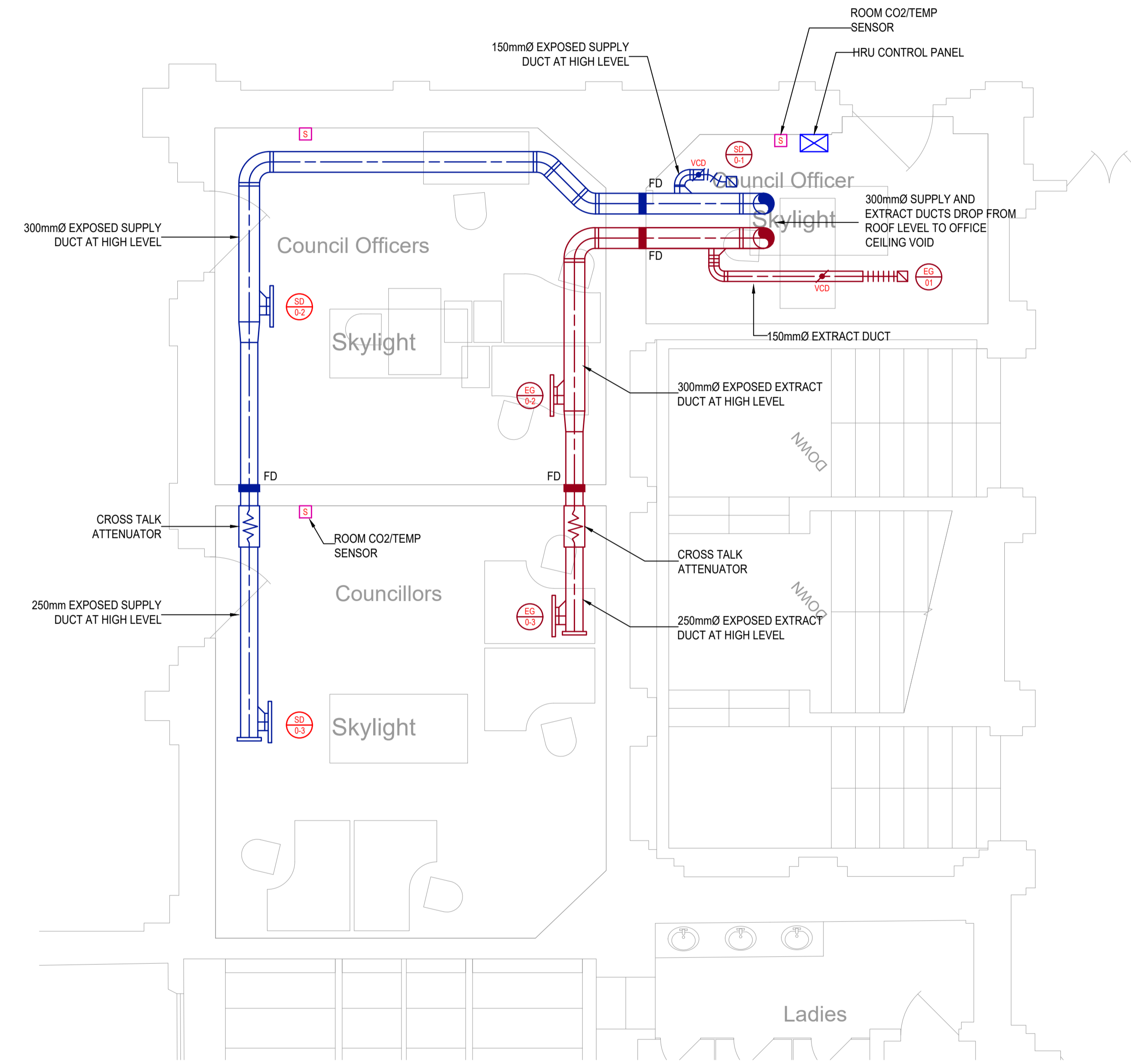


- LEGEND**
-  WALL MOUNTED (150mm AFFL) ROOM CO2 AND TEMPERATURE SENSOR
 -  FUSIBLE LINK FIRE DAMPER (60 MINUTE)
 -  VOLUME CONTROL DAMPER
 -  CEILING MOUNTED 150x150 4 WAY SUPPLY DIFFUSER (LOUVRE FACED)
 -  CEILING MOUNTED 150x150 4 WAY EXTRACT GRILLE (LOUVRE FACED)
 -  600mm LONG, 250mm Ø TROX CROSS TALK ATTENUATOR
 -  DUCT MOUNTED SUPPLY/EXTRACT GRILLE

THIS DRAWING REFLECTS DESIGN INTENT ONLY.
 RYBKA LTD. DO NOT ACCEPT ANY LIABILITY REGARDING THE ACCURACY & VERACITY OF INFORMATION PROVIDED BY OTHERS USED IN THE PREPARATION OF THIS DRAWING.
 THIS DRAWING TO BE READ IN CONJUNCTION WITH ALL OTHER RELEVANT DRAWINGS & SPECIFICATIONS.
 ALL DIMENSIONS AND SIZES ARE IN MILLIMETRES UNLESS OTHERWISE STATED.
 DO NOT SCALE FROM THIS DRAWING.
 FOR KEY TO DRAWINGS GRAPHICAL SYMBOLS SEE SYMBOLS LEGEND.

NOTE
 HRU CONTROLS STRATEGY - HRU TO OPERATE ON TIME CLOCK C/W OVERRIDE FUNCTION AT MAIN CONTROL PANEL IN OFFICE. UNIT TO RUN AT 50% DUCTY (TRICKLE MODE) AND WHEN ANY ROOM CO2/TEMP SENSORS EXCEED 1000PPM OR 24°C (ADJUSTABLE), UNIT TO RUN AT BOOST MODE (100% DUTY) UNTIL ALL ROOM CONDITIONS DROP TO 800PPM AND 22°C.

- NOTES:**
1. THIS DRAWING SHALL BE READ IN CONJUNCTION WITH THE M&E SPECIFICATIONS & SCHEDULES.
 2. REFER TO THE ARCHITECTS DRAWINGS FOR DETAILS OF ALL BUILDING COMPARTMENTATION. ALL SERVICES SHALL BE FIRE SEALED USING THE APPROVED PENETRATION DETAIL, FULLY IN ACCORDANCE WITH THE COMPARTMENT RATING.
 3. ALL PENETRATIONS THROUGH FIRE WALLS TO BE FIRE STOPPED TO MAINTAIN THE FIRE INTEGRITY OF THE FIRE WALL. ALL SLAB PENETRATIONS TO HAVE FIRE DAMPERS TO MAINTAIN THE INTEGRITY OF THE FIRE RATED SLAB.
 4. WHERE FITTED, ALL FIRE DAMPERS WILL BE MAINTAINED TO 2 HRS. ALL FIRE DAMPERS TO HAVE GALVANISED STEEL CURTAIN RETAINED BY A FUSIBLE LINK, OUT OF THE AIRSTREAM, TO BS476.
 5. THE MECHANICAL VENTILATION SYSTEMS TO BE DESIGNED AND CONSTRUCTED IN ACCORDANCE WITH THE PROVISIONS OF BS5588 - PART 9 : SECTION 3.
 6. DUCTWORK INSTALLATION TO COMPLY FULLY WITH DW 144, BS 5588 AND HVCA TR/19
 7. ACCESS HATCHES TO BE PROVIDED IN DUCTWORK TO CONFORM TO DW 144.
 8. EXTERNAL DUCTWORK TO BE FULLY INSULATED AS PER MECHANICAL SPECIFICATION. INTERNAL DUCTWORK TO BE SPIRAL AND WILL NOT BE INSULATED.
 9. VENTILATION DUCTWORK TO BE SUPPORTED VIA DROP RODS FIXED SOLELY TO BUILDING STRUCTURE.



02	17/12/20	AKS	TENDER ISSUE	AKS
01	06/10/20	AKS	INFORMATION ISSUE	AKS
REV	DATE	BY	DESCRIPTION	CHKD

DRAWING STATUS	TENDER
CLIENT	INVERCLYDE COUNCIL
PROJECT NUMBER	520.007.00
PROJECT TITLE	GREENOCK MUNICIPAL BUILDINGS AHU
DRAWING TITLE	FIRST FLOOR PLAN, PROPOSED VENTILATION LAYOUT

RYBKA

Cadell House, 27 Waterloo Street, Glasgow, G2 6BZ
 t +44 (0)141 221 2334
 e info@rybka.co.uk w rybka.co.uk
 Rybka Limited, Building Services Engineering Consultants

SCALE	DRAWN	DATE	CHECKED	PASSED
1:50@A1	AKS	01/10/20	AKS	-
DRAWING NUMBER	GMB-RYB-XX-01-DR-M-5701			REVISION
				02