



Home Office

Emergency Services Mobile Communications Programme

Supporting Technical Information

for **EAS0138d**: -

The Ross on Arran

Planned LTE 800

Prepared by : Erik Smith

Date 06/05/20








Map of Area





EAS0138d

This gap file was requested by the 3ES. This site is located here to help provide extended contiguous coverage to the road running from Lamlash to the south west coast road. This road is known as the ROSS and is a well used short cut for public and 3ES alike. It will also cover the surrounding forestry cycle and walking trails and the surrounding area.

Coverage Key	
	Major Road Service Level
	Major Road Exceptional Level
	Minor Road Service Level
	Minor Road Exceptional Level
	No coverage

Major Road Service Level: - Required continuous signal level along a major road.

Major Road Exception Level – Allowable lower signal level for a short distance on a major road.

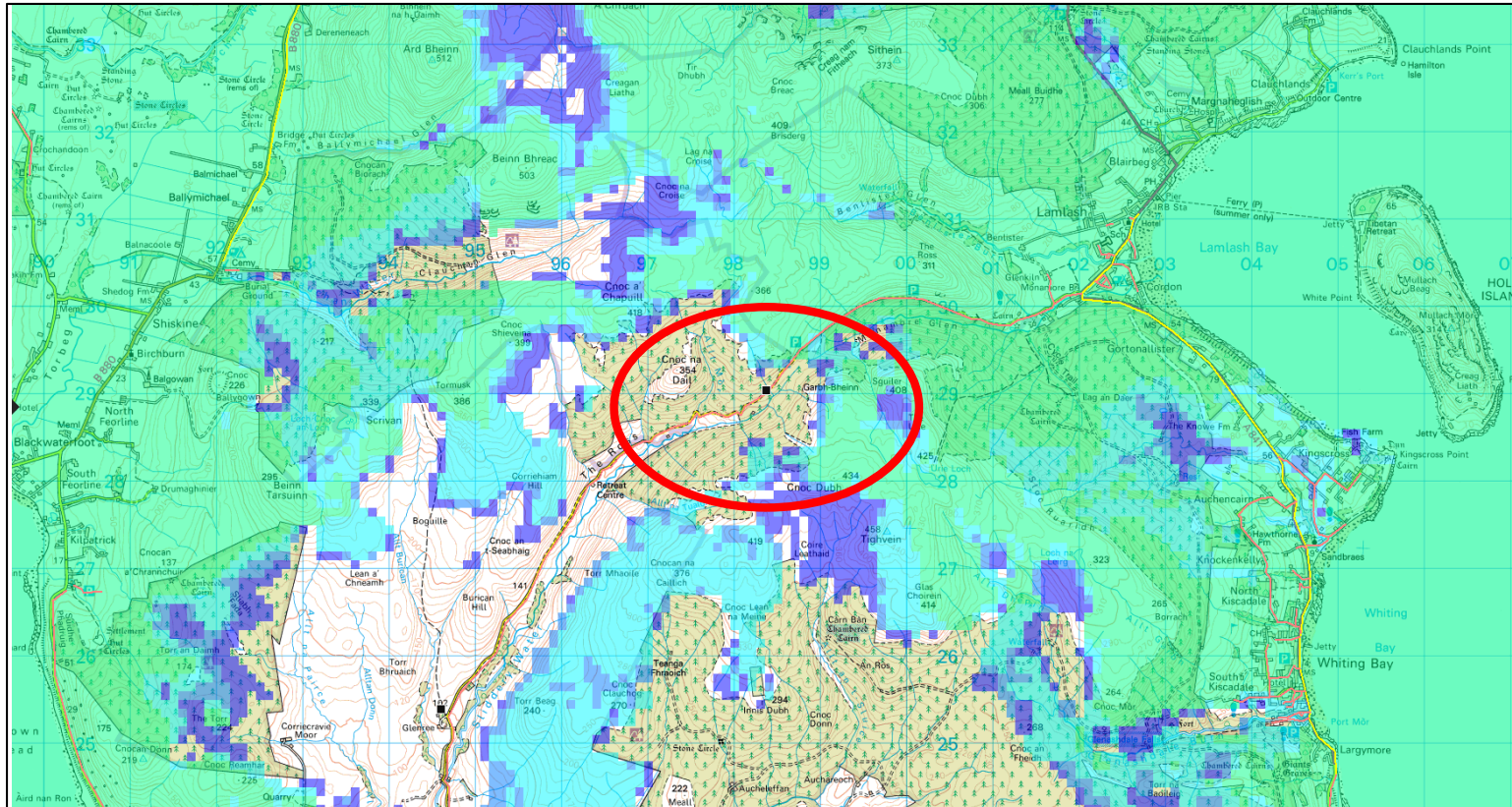
Minor Road Service Level: - Required continuous signal level along a minor road.

Minor Road Exception Level – Allowable lower signal level for a short distance on a minor road.



Home Office

EAS0138d – Existing L800 & L1800 Combined ESMCN coverage including proposed EE ESN coverage

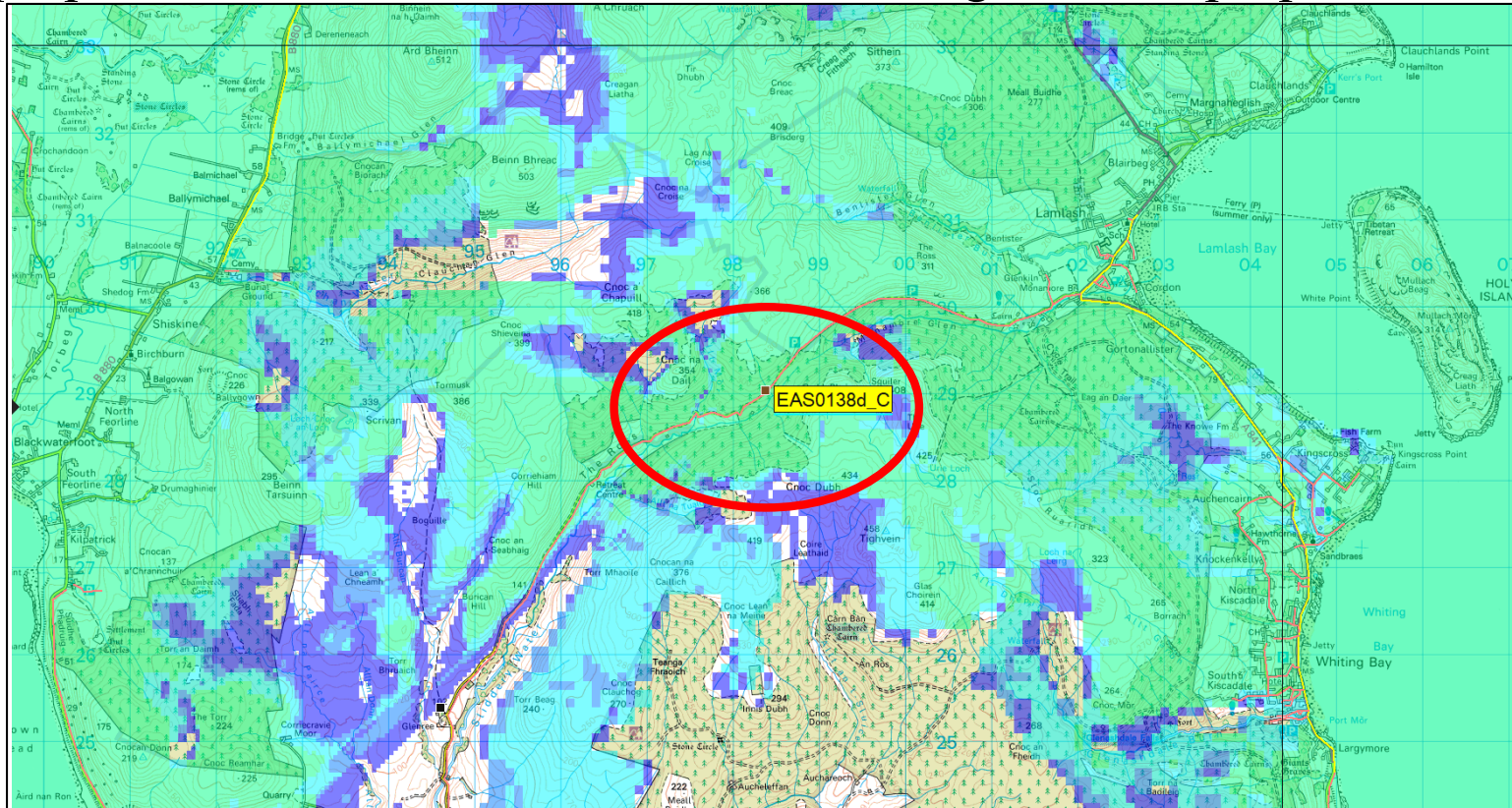


Note: This is predicted coverage using radio coverage planning software



Home Office

EAS0138d – Predicted L800 & L1800 Combined ESMCN coverage with new proposed site with antennas at **35m** including EE ESN proposed coverage

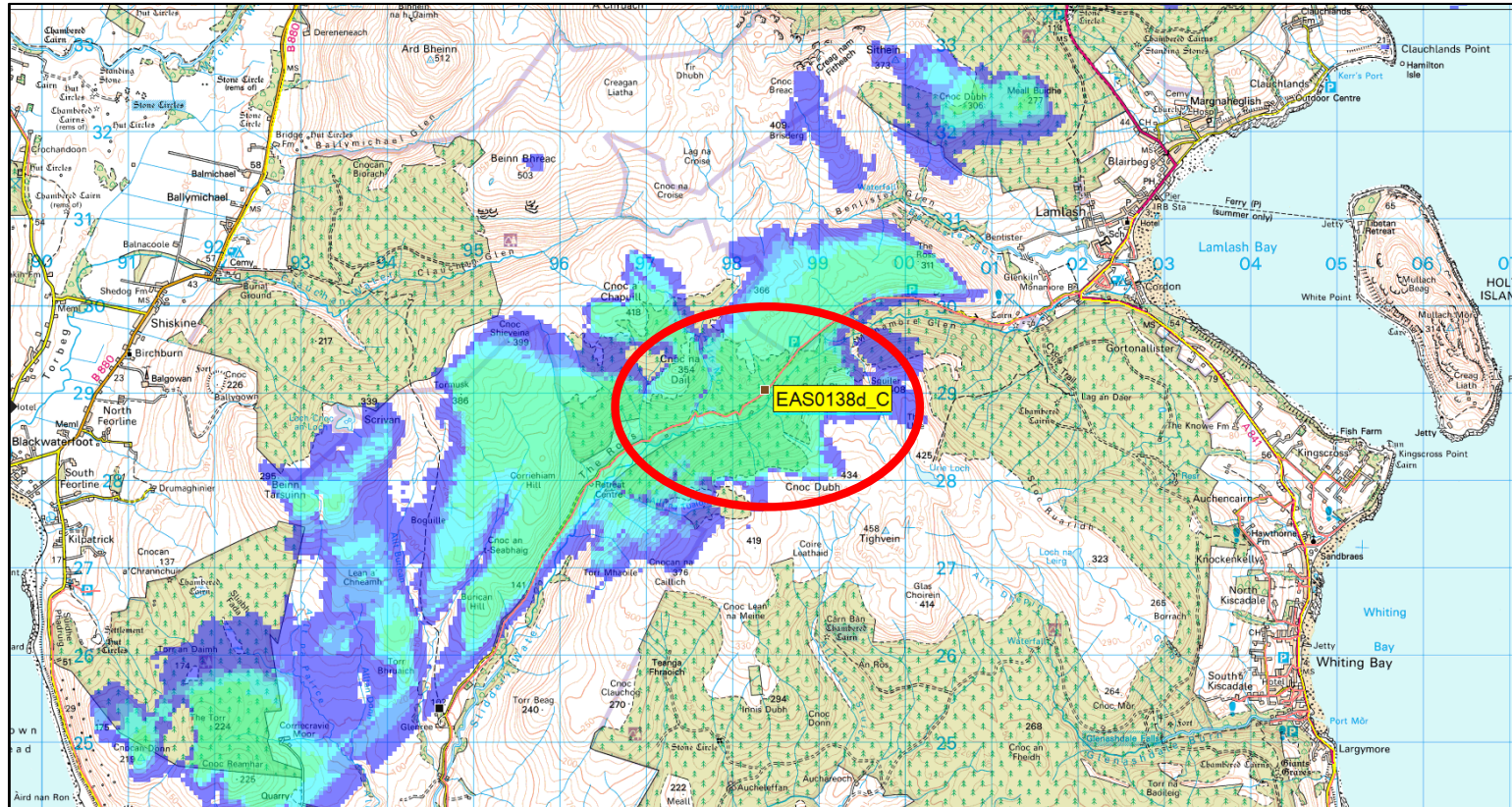


Note: This is predicted coverage using radio coverage planning software



Home Office

EAS0138d – Predicted L800 ESMCN coverage from new proposed site with antennas at 35m



Note: This is predicted coverage using radio coverage planning software